

# PHILLIPS

A close-up photograph of a wooden chair with a curved back and a leather seat, set against a light blue background. The chair's backrest is made of a single piece of wood, curved to follow the spine. The seat is upholstered in a rich, brown leather with visible stitching and two small, round, dark-colored buttons or studs. The wood has a warm, natural finish. The background is a solid, light blue color.

## NORDIC DESIGN

LONDON 26 SEPTEMBER 2013















# PHILLIPS

## NORDIC DESIGN

### SALE INFORMATION

LONDON SALE 26 SEPTEMBER 2013

TO IMMEDIATELY FOLLOW THE DESIGN SALE, AT APPROXIMATELY 6PM

### AUCTION & VIEWING LOCATION

7 Howick Place, London SW1P 1BB

### AUCTION

26 September 2013 at 6pm

### VIEWING

19-26 September

Monday - Saturday 10am - 6pm

Sunday 12pm - 6pm

### SALE DESIGNATION

In sending in written bids or making enquiries  
please refer to this sale as UK050313 or Nordic.

### ABSENTEE AND TELEPHONE BIDS

tel +44 20 7318 4045 fax +44 20 7318 4035

bidslondon@phillips.com

### DESIGN DEPARTMENT

#### HEAD OF SALE

Ben Williams +44 20 7318 4027

bwilliams@phillips.com

#### SALE ADMINISTRATOR

Annabelle Wills +44 20 7318 4019

awills@phillips.com

**Front cover** Finn Juhl 'Chieftain' armchair, circa 1949, lot 301

**Back cover** Poul Henningsen 'Spiral' ceiling light, designed for the University of Århus, 1942, lot 302

**Inside front cover** Finn Juhl Sofa, circa 1951, lot 303

**Opposite** Tapio Wirkkala Important unique leaf dish, from the IX Triennale, Milan, 1951, lot 246

**Inside back cover** Josef Frank Cabinet, circa 1937, lot 261





FINL





AND



201

**PAAVO TYNELL** 1890-1973

*Six-armed chandelier, from the 'Concerto' series, 1940s*

Tubular brass, amber glass.

180 cm (70 $\frac{7}{8}$  in.) drop, 41.5 cm (16 $\frac{3}{8}$  in.) diameter

Manufactured by Taito Oy, Finland.

**Estimate** £5,000-7,000 \$7,800-10,900 €5,800-8,200 ♠

**LITERATURE**

*Finland House Lighting: harmony in lighting for harmony in living, original designs by Paavo Tynell*, sales catalogue, New York, n.p. for examples from the series









202

**ALVAR AALTO** 1898-1976

*Pair of rare extendable 'L-leg' tables, 1930s*

Bent birch laminated plywood, linoleum birch laminated plywood.

Each: 70.8 x 112 x 83.5 cm (27 $\frac{7}{8}$  x 44 $\frac{1}{8}$  x 32 $\frac{7}{8}$  in.)

Manufactured by O.y. Huonekalu-ja Rakennustyötehdas A.b., Turku, for Artek, Finland.

**Estimate** £4,000-6,000 \$6,200-9,300 €4,700-7,000 ♠

**LITERATURE**

Thomas Kellein, ed., *alvar & aino aalto. design collection bischofberger*, exh. cat., Kunsthalle Bielefeld, Zurich, 2005, p. 97 for a similar example



**TAPIO WIRKKALA** 1915-1985

*Pair of standard lamps, model no. K 10-11,  
circa 1954*

Brass, tubular brass, painted metal.

Each: 193.3 cm (76⅞ in.) fully extended

Manufactured by Idman, Finland. Each impressed  
with manufacturer's label *IDMAN*.

**Estimate** £7,000-9,000 \$10,900-14,000

€8,200-10,500 ♠

**LITERATURE**

*Idman: Koristevalaisinluettelo (decorative lamps list),  
sales catalogue, no. 124, Helsinki, n.p.*

Marianne Aav, Rosa Barovier Mentasti and Gordon  
Bowyer, et al., *Tapio Wirkkala - eye, hand and  
thought*, exh. cat., Museum of Art and Design,  
Helsinki, 2000, p. 387

Charlotte and Peter Fiell, eds., *1000 Lights, Vol. 1:  
1879 to 1959*, Cologne, 2005, p. 540







204

**TOINI MUONA** 1904-1987

*Bowl and vase, 1940s*

Bowl: porcelain, glaze; vase: porcelain, white and pale blue glazes.

Bowl: 18 cm (7 $\frac{1}{8}$  in.) diameter; vase: 26.5 cm (10 $\frac{3}{8}$  in.)

Produced at Arabia, Finland. Each incised with artist's mark *TM* and vase incised *ARABIA*.

**Estimate** £4,000-6,000 \$6,200-9,300 €4,700-7,000 ♠





205

**ALVAR AALTO** 1898-1976

*Shelf unit, model no. 111, circa 1934*

Bent birch laminated plywood, birch laminated plywood.

53 x 83 x 29.4 cm (20 $\frac{7}{8}$  x 32 $\frac{5}{8}$  x 11 $\frac{5}{8}$  in.)

Manufactured by O.y. Huonekalu-ja Rakennustyötehdas A.b., Turku, for Artek, Finland.

**Estimate** £7,000-9,000 \$10,900-14,000 €8,200-10,500 ♠

**LITERATURE**

'Finmar: Furniture of the future for the home of To-day', *Finmar*, sales catalogue, London, 1939, p. 27

Pirkko Tuukkanen, ed., *Alvar Aalto Designer*, Helsinki, 2002, pp. 167, 169

Thomas Kellein, ed., *alvar & aino aalto. design collection bischofberger*, exh. cat., Kunsthalle Bielefeld, Zurich, 2005, p. 109





206

**KIM SIMONSSON** b. 1974

*'Spitting girl'*, 2008

Glazed and painted ceramic, glass.

102 cm (40½ in.) high

**Estimate** £8,000-12,000 \$12,500-18,700 €9,300-14,000

**EXHIBITED**

'Dreams And Disappointments II', Herrmann & Wagner Gallery, Berlin, 2008

'Every Body Counts', Vestfossen Kunstlaboratorium, Vestfossen, 2008



207

**TIMO SARPANEVA** 1926-2006

*Large vase, model no. C 1244, from the 'Claritus' series, 1984*

Opaque and clear glass.

22.7 cm (8 $\frac{7}{8}$  in.) high

Produced by Iittala, Finland. Underside incised and dated with *TIMO SARPANEVA IITTALA 1984 C 1244*.

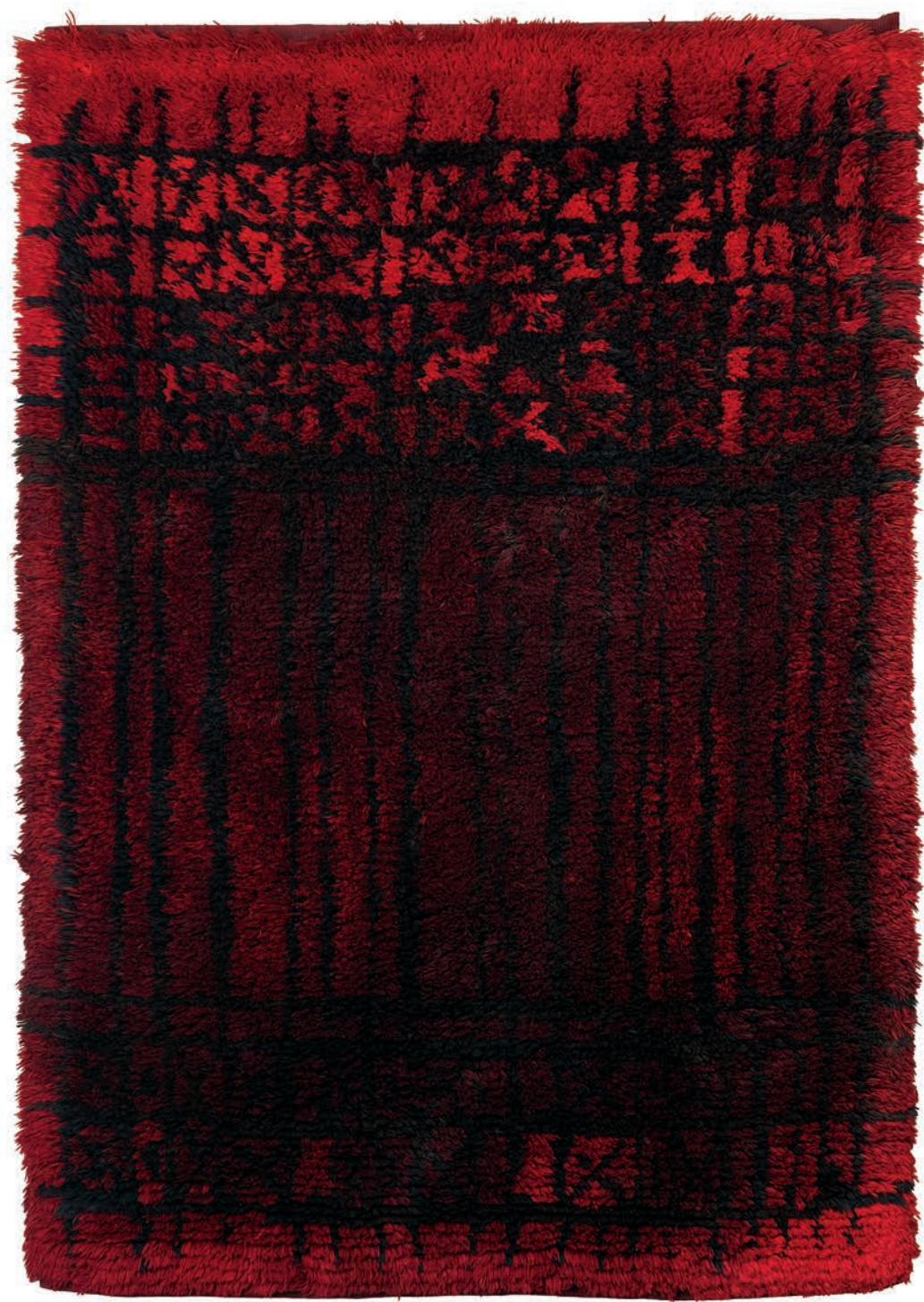
**Estimate** £4,000-6,000 \$6,200-9,300 €4,700-7,000 ♠

**LITERATURE**

Charlotte and Peter Fiell, *Scandinavian Design*, Cologne, 2002, p. 591 for an example from the series

Marianne Aav and Eeva Viljanen, eds., *Iittala: 125 Years of Finnish Glass Complete History with all Designers*, Helsinki, 2006, pp. 55-58, 231 for examples from the series





208

**KIRSTI ILVESSALO** b. 1920

'Täysikuu' (*Full Moon*) rug, 1950

Wool.

187 x 130.5 cm (73 $\frac{5}{8}$  x 51 $\frac{3}{8}$  in.)

Produced by Suomen Käsityön Ystävät Oy, Finland (The Friends of Finnish Handicrafts). Reverse with printed and handwritten fabric labels *SUOMEN KÄSITYÖN YSTÄVÄT OY, HELSINKI - FINLAND DESIGN: KIRSTI ILVESSALO 'TÄYSIKUU', 1950* and *TÄYSIKUU SOMM KIRSTI ILVESSALO*.

**Estimate** £3,000-5,000 \$4,700-7,800 €3,500-5,800 ♠

#### LITERATURE

Marianne Aav and Nina Stritzler-Levine, eds., *Finnish Modern Design: Utopian Ideals and Everyday Realities: 1930-1997*, exh. cat., The Bard Graduate Center for Studies in the Decorative Arts, New Haven, 1998, p. 196, fig. 8-16



209



210



209

PROPERTY FROM AN IMPORTANT PRIVATE COLLECTION

**BIRGER KAIPIAINEN** 1915-1988

*Wall-mounted platter, 1970s*

Glazed earthenware, glaze pearls in relief.

5 x 39.7 x 32.3 cm (1 $\frac{7}{8}$  x 15 $\frac{5}{8}$  x 12 $\frac{3}{4}$  in.)

Produced by Arabia, Finland. Underside incised *KAIPIAINEN ARABIA*.

**Estimate** £4,000-6,000 \$6,200-9,300 €4,700-7,000 ♣‡

**PROVENANCE**

Sotheby's, New York, 'Ariane Dandois: European Furniture, Paintings & Asian Art', 26 October 2007, lot 753

**LITERATURE**

*Domus* (Milan), no. 387, February 1962, pp. 48-49 for similar examples  
Charlotte and Peter Fiell, *Scandinavian Design*, Cologne, 2002, p. 343 for similar examples

210

PROPERTY FROM AN IMPORTANT PRIVATE COLLECTION

**BIRGER KAIPIAINEN** 1915-1988

*Platter, 1976*

Glazed earthenware, glaze pearls in relief.

5.2 x 50.4 x 42.7 cm (2 x 19 $\frac{7}{8}$  x 16 $\frac{3}{4}$  in.)

Produced by Arabia, Finland. Underside incised *KAIPIAINEN ARABIA* and handwritten in ink with *LahjottiSTK Aararammassa Kafulauraih-Lolilaisundso 9.8.1976*.

**Estimate** £7,000-9,000 \$10,900-14,000 €8,200-10,500 ♣‡

**PROVENANCE**

Sotheby's, New York, 'Ariane Dandois: European Furniture, Paintings & Asian Art', 26 October 2007, lot 756

**LITERATURE**

*Domus* (Milan), no. 387, February 1962, pp. 48-49 for similar examples  
Charlotte and Peter Fiell, *Scandinavian Design*, Cologne, 2002, p. 343 for similar examples



211

**ALVAR AALTO** 1898-1976

*Large 'Beehive' ceiling light, model no. A332, circa 1953-1954*

Painted aluminium, perforated brass, painted brass.

Variable drop, 36 x 31 x 31 cm (14½ x 12¼ x 12¼ in.)

Manufactured by Valaistustyö Ky, Finland. Interior light fixture impressed with VALAISTUSTYÖ A332.

**Estimate** £7,000-10,000 \$10,900-15,600 €8,200-11,600 ♠

**LITERATURE**

Aarno Ruusuvuori, ed., *Alvar Aalto 1898-1976*, Helsinki, 1978, p. 162, fig. 234

Juhani Pallasmaa, ed., *Alvar aalto furniture*, exh. cat., Museum of Finnish Architecture Finnish Society of Crafts and Design Artek, Helsinki, 1984, p. 92, fig. 155

*Domus* (Milan), no. 810, December 1998, p. 43, figs. 8-12

Pirkko Tuukkanen, ed., *Alvar Aalto Designer*, Vammala, 2002, p. 104

Thomas Kellein, ed., *alvar & aino aalto. design collection bischofberger*, exh. cat., Kunsthalle Bielefeld, Zurich, 2005, p. 180



**ALVAR AALTO** 1898-1976

*Pair of 'Tank' armchairs, model no. 400, circa 1935-1936*

Bent birch laminated plywood, fabric.

Each: 70.5 x 79 x 85.6 cm (27¾ x 31½ x 33¾ in.)

Manufactured by O.y. Huonekalu- ja Rakennustyötehdas A.b., Turku, for Artek, Finland.

**Estimate** £10,000-15,000 \$15,600-23,400 €11,600-17,500 ♠

**LITERATURE**

J Stewart Johnson, *Alvar Aalto: Furniture and Glass*, exh. cat., The Museum of Modern Art, New York, 1984, p. 9

Eva B. Ottillinger, *Alvar Aalto, Möbel: Die Sammlung Kossdorff*, Vienna, 2002, p. 50, fig. 43

Pirkko Tuukkanen, ed., *Alvar Aalto Designer*, Vammala, 2002, pp. 85, 174

Thomas Kellein, ed., *alvar & aino aalto. design collection bischofberger*, exh. cat., Kunsthalle Bielefeld, Zurich, 2005, p. 128





213

**PAAVO TYNELL** 1890-1973

*'Simpukka' (Clam) table lamp*, circa 1941

Copper, leather-wrapped tubular metal.

27 cm (10<sup>5</sup>/<sub>8</sub> in.) high

Manufactured by Taito Oy, Finland.

**Estimate** £3,000-4,000 \$4,700-6,200 €3,500-4,700 ♠

**LITERATURE**

Marianne Aav and Nina Stritzler-Levine, eds., *Finnish Modern Design: Utopian Ideals and Everyday Realities: 1930-1997*, exh. cat., The Bard Graduate Center for Studies in the Decorative Arts, New Haven, 1998, p. 286 fig. 40

Marianne Aav and Eeva Viljanen, *Paavo Tynell ja Taito Oy*, exh. cat., Design Museum Helsinki, 2005, p. 44

Charlotte and Peter Fiell, eds., *1000 Lights, Vol. 1: 1879 to 1959*, Cologne, 2005, p. 398

*Paavo Tynell*, exh. cat., Galerie Eric Philippe, Paris, 2010, pp. 63-64



214

**ALVAR AALTO** 1898-1976

*Pair of 'Fan leg' stools, model no. X602, circa 1954*

Birch, leather.

Each: 45.9 x 44.3 x 44.7 cm (18½ x 17½ x 17⅝ in.)

Manufactured by O.y. Huonekalu- ja Rakennustyötehdas A.b., Turku, for Artek, Finland.

**Estimate** £3,000-4,000 \$4,700-6,200 €3,500-4,700 ♠

**LITERATURE**

Pirkko Tuukkanen, ed., *Alvar Aalto Designer*, Vammala, 2002, pp. 100,

182-83, 190 for drawings, images and period images

Thomas Kellein, ed., *alvar and aino aalto design: collection bischofberger*, exh. cat., Kunsthalle Bielefeld, 2005, p. 152



“There is scarcely a modern lighting fixture that does not owe a debt to Paavo Tynell.” LIFE MAGAZINE, DECEMBER, 1960

215

**PAAVO TYNELL** 1890-1973

*Important ceiling light, from the ‘Fantasia’ series, circa 1956*

Brass, painted mesh metal.

108 cm (42½ in.) drop, 107 cm (42⅞ in.) diameter

Manufactured by Taito Oy, Finland.

**Estimate** £60,000-80,000 \$93,500-125,000 €69,900-93,200 ♠

**LITERATURE**

*Finland House Lighting: harmony in lighting for harmony in living, original designs by Paavo Tynell*, sales catalogue, New York, n.p. for examples from the series

Christian Borngreber, *Stilnovo, Design in den 50er Jahren: Phantasie u.*

*Phantastik*, Frankfurt, 1979, p. 162, fig. 5.8 for an example from the series

Marianne Aav and Eeva Viljanen, *Paavo Tynell ja Taito Oy*, exh. cat., Design Museum Helsinki, 2005, p. 103 for an example from the series





**ALVAR AALTO and AINO AALTO** 1898-1976, 1894-1949

*Extendable 'H Leg' dining table, circa 1956 and eight dining chairs, model no. 615, circa 1939*

Table: teak laminated wood, teak, painted metal; chairs: teak, cane.

Table: 73.2 x 229.3 x 89.9 cm (28 $\frac{7}{8}$  x 90 $\frac{1}{4}$  x 35 $\frac{3}{8}$  in.) fully extended;  
each chair: 79.9 x 44 x 50 cm (31 $\frac{1}{2}$  x 17 $\frac{3}{8}$  x 19 $\frac{5}{8}$  in.)

Manufactured by O.y. Huonekalu-ja Rakennustyötehdas A.b., Turku,  
for Artek, Finland.

**Estimate** £7,000-10,000 \$10,900-15,600 €8,200-11,600 ♠

**LITERATURE**

Pirkko Tuukkanen, ed., *Alvar Aalto Designer*, Helsinki, 2002, pp. 102-3,  
185 for drawings and images

Thomas Kellein, ed., *alvar & aino aalto. design collection bischofberger*,  
exh. cat., Kunsthalle Bielefeld, Zurich, 2005, p. 137 for the chairs











217

ATTRIBUTED TO

**IMPI SOTAVALTA** 1885-1943

*Rug, 1930s*

Wool.

315 x 200 cm (124 x 78¾ in.)

Produced by Suomen Käsityön Ystävät Oy, Finland  
(The Friends of Finnish Handicrafts).

**Estimate** £8,000-12,000 \$12,500-18,700 €9,300-14,000



218

**PAAVO TYNELL** 1890-1973

*Pair of wall lights, circa 1950*

Gilded metal, opaque glass.

Each: 71.5 x 64.7 x 25.2 cm (28½ x 25½ x 9¾ in.)

Manufactured by Taito Oy, Finland. Each impressed with *TAITO*.

**Estimate** £18,000-22,000 \$28,000-34,300

€21,000-25,600 ♣





219

**PAAVO TYNELL** 1890-1973

*Pair of wall lights, model no. 6204, 1940s*  
Painted metal.

Each: 41 x 17.1 x 21.2 cm (16½ x 6¾ x 8⅜ in.)

Manufactured by Taito Oy, Finland.

**Estimate** £5,000-7,000 \$7,800-10,900

€5,800-8,200 ♣

220

**ALVAR AALTO** 1898-1976

*'Cocktail' cabinet, model no. 810, circa 1936*

Bent birch laminated wood, mahogany.

100 x 95 x 40.2 cm (39 3/8 x 37 3/8 x 15 7/8 in.)

Manufactured by O.y. Huonekalu-ja

Rakennustyötehdas A.b., Turku,

for Artek, Finland.

**Estimate** £4,000-6,000 \$6,200-9,300

€4,700-7,000 ♣

#### LITERATURE

'Finmar: Furniture of the future for the home of To-day', *Finmar*, sales catalogue, London, 1939, p. 37

Pirkko Tuukkanen, ed., *Alvar Aalto Designer*, Vammala, 2002, pp. 173, 177

Eva B Ottillinger, *Alvar Aalto, Möbel: Die Sammlung Kossdorff*, Vienna, 2002, p. 42, fig. 29







221

**ALVAR AALTO** 1898-1976

*Pair of standard lamps, model no. A808, designed for the National Pensions Institute, Helsinki, 1952-1956*

Brass, tubular brass, leather-wrapped metal.

Each: 167.5 cm (65 $\frac{7}{8}$  in.) high

Manufactured by Valaistustyö Ky, Finland. Top of each standard impressed with *Valaistustyö A808*.

**Estimate** £10,000-15,000 \$15,600-23,400  
€11,600-17,500 ♠

**LITERATURE**

*Domus* (Milan), no. 440, July 1966, n.p.

Thomas Kellein, ed., *alvar & aino aalto. design collection bischofberger*, exh. cat., Kunsthalle Bielefeld, Zurich, 2005, p. 185



222

**ALVAR AALTO** 1898-1976

*Two salad plates, model no. 9768, circa 1939*

Glass.

Each: 2.9 x 25.2 x 32.7 cm (1½ x 9¾ x 12¾ in.)

Produced by Karhula-Iittala, Finland.

**Estimate** £4,000-6,000 \$6,200-9,300

€4,700-7,000 ♠

**LITERATURE**

Pirkko Tuukkanen, ed., *Alvar Aalto Designer*, Vammala, 2002, p. 207

223

**LISA JOHANSSON-PAPE** 1907-1989

*Pair of table lamps, 1960s*

Leather-covered wood, opaque glass, brass, fabric shades.

Each: 58 cm (22¾ in.) high

Manufactured by Ornö, Finland.

**Estimate** £4,000-6,000 \$6,200-9,300

€4,700-7,000 ♠

**LITERATURE**

*Ornåmo*, Helsinki, 1962, p. 40, fig. 130 for a similar example







224

**ILMARI TAPIOVAARA** 1914-1999

*Large 'Tale' stool, circa 1953*

Birch, birch laminated plywood.

40.3 x 64.4 x 60.1 cm (15 $\frac{7}{8}$  x 25 $\frac{3}{8}$  x 23 $\frac{5}{8}$  in.)

Manufactured by Asko, Finland.

**Estimate** £3,000-5,000 \$4,700-7,800 €3,500-5,800 ♠

**LITERATURE**

Jarno Peltonen, *Ilmari Tapiovaara: Sisustusarkkitehti. Inredningsarkitekt. Interior architect*, Helsinki, 1984, pp. 4, 34

Pekka Korvenmaa, *Ilmari Tapiovaara*, Salamanca, 1997, pp. 106-7, pls. 143-49, pp. 198-99

Lily Kane, ed., *Ilmari Tapiovaara: Interior Architect*, exh. cat., R Gallery, New York, 2001, p. 13



225

**ALVAR AALTO** 1898-1976

*'Beehive' ceiling light, model no. A331, circa 1953-1954*

Painted aluminium, perforated brass, painted brass.

Variable drop, 30.5 cm (12 in.) high, 33 cm (12 $\frac{7}{8}$  in.) diameter

Manufactured by Valaistustyö Ky, Finland. Interior light fixture impressed with VALAISTUSTYÖ A331.

#### LITERATURE

Aarno Ruusuvuori, ed., *Alvar Aalto 1898-1978*, Helsinki, 1978, p. 162, fig. 234

*Domus* (Milan), no. 810, December 1998, p. 43, figs. 8-12

Thomas Kellein, ed., *alvar & aino aalto. design collection bischofberger*, exh. cat., Kunsthalle Bielefeld, Zurich, 2005, p. 180

**Estimate** £4,000-6,000 \$6,200-9,300 €4,700-7,000 ♣





226

**KIM SIMONSSON** b. 1974

*'Immaculate Conception'*, 2008

Glazed and painted ceramic.

101.5 x 45.5 x 31.7 cm (39 $\frac{7}{8}$  x 17 $\frac{7}{8}$  x 12 $\frac{1}{2}$  in.)

**Estimate** £8,000-12,000 \$12,500-18,700 €9,300-14,000

**EXHIBITED**

*'Incertitude de la vision'*, Tour & Taxis, Brussels, 2008



227

**TIMO SARPANEVA** 1926-2006

*Early 'Orkhidea' (Orchid) vase, model no. 3868-540, designed 1954*

Steam-blown clear glass.

32 cm (12<sup>5</sup>/<sub>8</sub> in.) high

Produced by Iittala, Finland. Underside incised with

*TIMO SARPANEVA - IITTALA.*

**Estimate** £4,000-6,000 \$6,200-9,300 €4,700-7,000 ♠

#### LITERATURE

Marianne Aav and Nina Stritzler-Levine, eds., *Finnish Modern Design: Utopian Ideals and Everyday Realities: 1930-1997*, exh. cat., The Bard Graduate Center for Studies in the Decorative Arts, New Haven, 1998, p. 301, fig. 57

Marianne Aav and Eeva Viljanen, eds., *Iittala: 125 Years of Finnish Glass Complete History with all Designers*, Helsinki, 2006, pp. 137, 223





228

**TAPIO WIRKKALA** 1915-1985

*'Jäävuori' (Iceberg) vase, model no. 3794, 1955*

Still-mould blown crystal glass.

21.8 x 19.7 x 17.1 cm (8<sup>5</sup>/<sub>8</sub> x 7<sup>3</sup>/<sub>4</sub> x 6<sup>3</sup>/<sub>4</sub> in.)

Produced by Iittala, Finland. Underside incised and dated with *TAPIO WIRKKALA - IITTALA - 55*.

**Estimate** £3,000-5,000 \$4,700-7,800 €3,500-5,800 ♠

**LITERATURE**

*Domus* (Milan), no. 256, March 1951, n.p. for similar examples

Marianne Aav, Rosa Barovier Mentasti and Gordon Bowyer, et al., *Tapio Wirkkala - eye, hand and thought*, exh. cat., Museum of Art and Design, Helsinki, 2000, p. 307 for a similar example



229

**ALVAR AALTO** 1898-1976

*'Hand Grenade' ceiling light, model no. A111, circa 1962*

Brass, painted metal.

Variable drop, 51.9 cm (20<sup>3</sup>/<sub>8</sub> in.), 18 cm (7<sup>1</sup>/<sub>8</sub> in.) diameter

Manufactured by Valaistustyö Ky, Finland. Light fixture impressed with *Valaistustyö A111*.

**Estimate** £7,000-10,000 \$10,900-15,600 €8,200-11,600 ♠

**LITERATURE**

Thomas Kellein, ed., *alvar & aino aalto. design collection bischofberger*, exh. cat., Kunsthalle Bielefeld, Zurich, 2005, p. 172

Charlotte and Peter Fiell, eds., *1000 Lights, Vol. 1: 1879 to 1959*, Cologne, 2005, p. 493



230

**ILMARI TAPIOVAARA** 1914-1999

*Pair of 'Wilhelmiina' chairs, circa 1959*

Painted birch plywood, bent birch laminated plywood.

Each: 67.7 x 53.1 x 62.5 cm (26 $\frac{5}{8}$  x 20 $\frac{7}{8}$  x 24 $\frac{5}{8}$  in.)

Manufactured by Wilhelm Schauman Ltd., Finland. Underside of each chair branded and impressed with manufacturer's logo.

**Estimate** £4,000-6,000 \$6,200-9,300 €4,700-7,000 ♠

#### LITERATURE

Jarno Peltonen, *Ilmari Tapiovaara: Sisustusarkkitehti. Inredningsarkitekt. Interior architect*, Helsinki, 1984, p. 5

Pekka Korvenmaa, *Ilmari Tapiovaara*, Salamanca, 1997, pp. 41, 152, pls. 306-10

Marianne Aav and Nina Stritzler-Levine, eds., *Finnish Modern Design: Utopian Ideals and Everyday Realities: 1930-1997*, exh. cat., The Bard Graduate Center for Studies in the Decorative Arts, New Haven, 1998, p. 312, fig. 69

Lily Kane, ed., *Ilmari Tapiovaara: Interior Architect*, exh. cat., R Gallery, New York, 2001, p. 39





231

**ALVAR AALTO** 1898-1976

*Nest of three 'Café' tables, model nos. 84, 85, 86, 1930s*

Bent birch laminated plywood, ash laminated plywood.

Largest: 57.5 x 66 x 35.5 cm (22 $\frac{5}{8}$  x 25 $\frac{7}{8}$  x 13 $\frac{7}{8}$  in.)

Manufactured by O.y. Huonekalu-ja Rakennustyötehdas A.b., Turku, for Artek, Finland.

**Estimate** £2,000-3,000 \$3,100-4,700 €2,300-3,500 ♠

#### LITERATURE

'FINMAR LIMITED: London, S.W.1, 44 Ranelagh Road', *Finmar*, sales catalogue, Helsingfors, 1936, n.p.

'Finmar: Furniture of the future for the home of To-day', *Finmar*, sales catalogue, London, 1939, p. 22

Eva B. Ottillinger, *Alvar Aalto, Möbel: Die Sammlung Kossdorff*, Vienna, 2002, p. 39, fig. 24

232

**TAPIO WIRKKALA** 1915-1985

*'Hopeakuu' (Silvermoon) pendant,*  
model no. 4-4194, 1972

Precious metal.

13 x 11.1 cm (5½ x 4¾ in.)

Serially produced by Nils Westerback, Finland.

Pendant marked with maker's mark, 925H, Finnish  
assay mark, town mark and T7.

**Estimate** £3,000-4,000 \$4,700-6,200 €3,500-4,700 ♠

**LITERATURE**

Marianne Aav, ed., *Tapio Wirkkala Eye, Hand and Thought*, exh. cat.,  
Museum of Art and Design, Helsinki, 2000, p. 192, fig. 338, p. 371





233

**ALVAR AALTO** 1898-1976

*Table lamp, model no. A704, circa 1954*

Perforated metal, leather-wrapped metal.

38.7 x 33.9 x 39.5 cm (15¼ x 13⅜ x 15½ in.)

Manufactured by Valaistustyö Ky, Finland. Interior of shade with manufacturer's metal label impressed *Valaistustyö A704*.

**Estimate** £8,000-12,000 \$12,500-18,700 €9,300-14,000 ♠

**LITERATURE**

Eva B. Ottillinger, *Alvar Aalto, Möbel: Die Sammlung Kossdorff*, Vienna, 2002, p. 53, fig. 50

Thomas Kellein, ed., *alvar & aino aalto. design collection bischofberger*, exh. cat., Kunsthalle Bielefeld, Zurich, 2005, p. 190

Charlotte and Peter Fiell, eds., *1000 Lights, Vol. 1: 1879 to 1959*, Cologne, 2005, p. 492





234

**ALVAR AALTO** 1898-1976

*Pair of cantilevered armchairs, model no. 34/402, circa 1933*

Bent birch laminated plywood, fabric.

Each: 74.9 x 60.4 x 70.4 cm (29½ x 23¾ x 27¾ in.)

Manufactured by O.y. Huonekalu-ja Rakennustyötehdas A.b., Turku, for Artek, Finland. Underside of both chair legs impressed, one with 200 and the other 186.

**Estimate** £4,000-6,000 \$6,200-9,300 €4,700-7,000 ♠

#### LITERATURE

'Finmar: Furniture of the future for the home of To-day', *Finmar*, sales catalogue, London, 1939, pp. 1, 9

Michael Playford and Michael Whiteway, *Alvar Aalto: furniture 1929-1939*, London, 1987, n.p.

Pirkko Tuukkanen, ed., *Alvar Aalto Designer*, Vammala, 2002, pp. 88-89, 166

Thomas Kellein, ed., *alvar & aino aalto. design collection bischofberger*, exh. cat., Kunsthalle Bielefeld, Zurich, 2005, pp. 114-17



235

**TIMO SARPANEVA** 1926-2006

*'Nukkuva lintu' (Sleeping Bird) vase, 1962*

Steam blown flared bottom cut i-colour glass.

11.8 x 19.1 x 18.3 cm (4 $\frac{5}{8}$  x 7 $\frac{1}{2}$  x 7 $\frac{1}{4}$  in.)

Produced by Iittala, Finland. Number 60 from the edition of 77. Underside incised with *TIMO SARPANEVA IITTALA 62 - 60/77*.

**Estimate** £4,000-6,000 \$6,200-9,300 €4,700-7,000 ♠

**LITERATURE**

Marianne Aav and Eeva Viljanen, eds., *Iittala: 125 Years of Finnish Glass Complete History with all Designers*, Helsinki, 2006, pp. 138, 226

236

**PAAVO TYNELL** 1890-1973

*Pair of standard lamps, model no. 9627, 1950s*

Painted perforated aluminium, leather-wrapped tubular metal, tubular brass, brass.

Each: 162.5 cm (63 $\frac{3}{8}$  in.) high

Manufactured by Taito Oy, Finland. One lamp shade impressed with manufacturer's mark *TAITO*.

**Estimate** £8,000-10,000 \$12,500-15,600 €9,300-11,600 ♠

**LITERATURE**

*Finland House Lighting: harmony in lighting for harmony in living, original designs by Paavo Tynell*, sales catalogue, New York, fig. 10501

Tuula Poutasuo, *Paavo Tynell ja Taito Oy*, Helsinki, 2005, fig. 10501

*Paavo Tynell*, exh. cat., Galerie Eric Philippe, Paris, 2010, n.p.



237

**GUNNEL NYMAN** 1909-1948

*'Serpentiini' vase, 1957*

Glass, opaque glass.

45.4 cm (17 $\frac{7}{8}$  in.) high

Produced by Nuutajärvi Notsjö, Finland. Underside incised with *G Nyman Nuutajärvi Notsjö - 57*.

**Estimate** £4,000-6,000 \$6,200-9,300 €4,700-7,000 ♠

**LITERATURE**

Marianne Aav and Nina Stritzler-Levine, eds., *Finnish Modern Design: Utopian Ideals and Everyday Realities: 1930-1997*, exh. cat., The Bard Graduate Center for Studies in the Decorative Arts, New Haven, 1998, p. 277, fig. 29





238

**TAPIO WIRKKALA** 1915-1985

*Handcrafted unique 'Bird' sculpture, 1950s*

Precious metal.

45.3 cm (17⅞ in.) high

Produced by Kultakeskus Oy, Finland. Marked with Hämeenlinna town mark, Finnish assay mark, 830 *KULTAKESKUS OY MADE IN FINLAND TAPIO WIRKKALA HANDMADE FINLAND* and incised with artist's initials *TW*.

**Estimate** £60,000-80,000 \$93,500-125,000 €69,900-93,200 ♠

**EXHIBITED**

'Tapio Wirkkala: Sculptor', Espoo Museum of Modern Art, Finland,  
14 October 2009 - 10 January 2010

**LITERATURE**

*Tapio Wirkkala: Sculptor*, exh. cat., Espoo Museum of Modern Art, 2009,  
p. 144

Three other unique examples of the present lot were produced in  
bronze, ebonised wood and *rhythmic* plywood.





239

**TIMO SARPANEVA** 1926-2006

'*Varjot*' (*Shadows*) sculpture, from the '*Finlandia*' series, 1966

Mould-blown and cast glass.

47 cm (18½ in.) high

Produced by Iittala, Finland. Underside incised with *TIMO SARPANEVA*  
IITTALA - 66.

**Estimate** £7,000-10,000 \$10,900-15,600 €8,200-11,600 ♠

#### LITERATURE

Jennifer Hawkins Opie, *Scandinavia: Ceramics & Glass in the Twentieth Century*, London, 1989, p. 75, fig. 217 for an example from the series  
Marianne Aav and Nina Stritzler-Levine, eds., *Finnish Modern Design: Utopian Ideals and Everyday Realities: 1930-1997*, exh. cat., The Bard Graduate Center for Studies in the Decorative Arts, New Haven, 1998, p. 341, fig. 111 for an example from the series  
Marianne Aav and Eeva Viljanen, eds., *Iittala: 125 Years of Finnish Glass Complete History with all Designers*, Helsinki, 2006, pp. 87, 95, 97, 123, for examples from the series, p. 227



240

**TAPIO WIRKKALA** 1915-1985

*'Rhythmic Plywood' coffee table*, circa 1957

Birch laminated wood, birch.

40.2 x 90.1 x 90.1 cm (15 $\frac{7}{8}$  x 35 $\frac{1}{2}$  x 35 $\frac{1}{2}$  in.)

Manufactured by Asko, Finland. Underside branded with *TAPIO WIRKKALA*  
*ASKO MADE IN FINLAND*.

**Estimate** £4,000-5,000 \$6,200-7,800 €4,700-5,800 ♠

**LITERATURE**

*Domus* (Milan), no. 341, April 1958, n.p. for similar examples

Marianne Aav, Rosa Barovier Mentasti and Gordon Bowyer, et al., *Tapio Wirkkala - eye, hand and thought*, exh. cat., Museum of Art and Design, Helsinki, 2000, p. 229, fig. 406, p. 380 for the *Rhythmic Plywood* and a similar example

Judith Gura, *Scandinavian Furniture: A Sourcebook of Classic Designs for the 21st Century*, London, 2007, p. 39 for a similar example



241

**TAPIO WIRKKALA** 1915-1985

*Thirteen-branch candelabrum, model no. TW 412, 1972*

Hand-formed precious metal.

79.3 x 41.9 x 41.9 cm (31¼ x 16½ x 16½ in.)

Produced on order by Kultakeskus Oy, Finland. Base incised with artist's initials and marked with maker's mark, Finnish assay mark, 925H, Hämeenlinna town mark and T7.

**Estimate** £16,000-18,000 \$24,900-28,000 €18,600-21,000 ♠

**LITERATURE**

Marianne Aav, Rosa Barovier Mentasti and Gordon Bowyer, et al., *Tapio Wirkkala - eye, hand and thought*, exh. cat., Museum of Art and Design, Helsinki, 2000, p. 168, fig. 299, p. 367

Peter Fiell, *Scandinavian Design*, Cologne, 2002, p. 666







242

**TOINI MUONA** 1904-1987

Vase, 1940s

Porcelain, *flambé* glaze.

26.5 cm (10 $\frac{3}{8}$  in.) high

Produced at Arabia, Finland. Underside incised with artist's mark *TM*.

**Estimate** £7,000-9,000 \$10,900-14,000 €8,200-10,500 ♠

**LITERATURE**

Harri Kalha, *Toini Muona 1904-1987*, Helsinki, 1998, p. 99



243

**PAAVO TYNELL** 1890-1973

*Eight-armed chandelier, model no. 9029/8, from the 'Concerto' series, circa 1948*

Tubular brass, brass, amber glass.

106.9 cm (42½ in.) drop, 85 cm (33½ in.) diameter

Manufactured by Taito Oy, Finland. Interior light fixture impressed with OY TAITO AB. MADE IN FINLAND, 9029/8 TT.

**Estimate** £5,000-7,000 \$7,800-10,900 €5,800-8,200 ♠

**PROVENANCE**

Hotel Seurahuone, Lahden, Finland

**LITERATURE**

*Finland House Lighting: harmony in lighting for harmony in living, original designs by Paavo Tynell*, sales catalogue, New York, n.p.

Charlotte and Peter Fiell, eds., *1000 Lights, Vol. 1: 1879 to 1959*, Cologne, 2005, p. 396 for a six-armed example



244

**TAPIO WIRKKALA** 1915-1985

*Dish, model no. 3561, 1967-1974*

Clear and textured glass still-blown into mould.

45.9 cm (18½ in.) diameter

Produced by Iittala, Finland. Manufacturer's label with *MADE IN FINLAND* and incised *TAPIO WIRKKALA - 3561*.

**Estimate** £3,000-4,000 \$4,700-6,200 €3,500-4,700 ♠

**PROVENANCE**

Private collection, Düsseldorf, Germany

**LITERATURE**

Marianne Aav, Rosa Barovier Mentasti and Gordon Bowyer, et al., *Tapio Wirkkala - eye, hand and thought*, exh. cat., Museum of Art and Design, Helsinki, 2000, p. 316

Marianne Aav and Eeva Viljanen, eds., *Iittala: 125 Years of Finnish Glass Complete History with all Designers*, Helsinki, 2006, p. 248



245

**TAPIO WIRKKALA** 1915-1985

*Group of ten candlesticks, 1972-1992*

Precious metal.

Tallest: 23.1 cm (9½ in.) high

Serially produced by Kultakeskus Oy, Finland. Each marked with maker's mark, Finnish assay mark, purity mark, date code, underside of seven candlesticks impressed with *KIPSITAYTE GYPSUM FILLING*, and one impressed *METAL*.

**Estimate** £7,000-9,000 \$10,900-14,000 €8,200-10,500 ♠

**LITERATURE**

Marianne Aav, Rosa Barovier Mentasti and Gordon Bowyer, et al., *Tapio Wirkkala - eye, hand and thought*, exh. cat., Museum of Art and Design, Helsinki, 2000, p. 365



“A true romancer from the far North.” EDGAR KAUFMANN JR

246

**TAPIO WIRKKALA** 1915-1985

*Important unique leaf dish, from the IX Triennale, Milan, 1951*

Birch laminated plywood, padouk, painted wood.

4.9 x 56.3 x 15.8 cm (1 $\frac{7}{8}$  x 22 $\frac{1}{8}$  x 6 $\frac{1}{4}$  in.)

Produced by Soinne & Kni, Finland.

**Estimate** £40,000-60,000 \$62,300-93,500 €46,600-69,900 ♠

**PROVENANCE**

Purchased from the IX Triennale, Milan  
by Franz and Irene Hart, Germany, 1951

**EXHIBITED**

IX Triennale, Milan, 1951

**LITERATURE**

‘9 nona triennale di milano 1951’, *Domus* (Milan), no. 300,  
June 1951, illustrated p. 20

“Throughout his work Wirkkala is as unmechanistic as possible – a true romancer from the far North...There is a revelation in Wirkkala’s wooden forms, with their parallel laminations meeting in angular accord. These are no ordinary joints, no piecing of bits and parts. The welded superglues of our era are notoriously stronger than what they hold together; they open up a whole new dialect in design where, since the year One, the corner, joint and hinge have been visual conjunctions of expression. In these ringed and ringing forms there is the premonition of a grammar as new as Joyce’s, playfully alluding to traditional joints, rich with associations now dislocated and re-evaluated.” Edgar Kaufmann Jr, ‘The Wonderworks of Tapio Wirkkala’, *Interiors*, November 1951







247

**PAAVO TYNELL** 1890-1973

*Pair of adjustable desk lamps, model no. 9227, 1950s*

Brass, painted metal, painted perforated metal.

Each: 46.7 cm (18<sup>3</sup>/<sub>8</sub> in.) high fully extended

Manufactured by Idman, Finland. Underside of each impressed with *TAITO* 9227 IDMAN VM 42 and one fixture impressed *Idman*.

**Estimate** £3,000-5,000 \$4,700-7,800 €3,500-5,800 ♠

#### LITERATURE

*Idman: Koristevalaisinluettelo (decorative lamps list)*, sales catalogue, no. 124, Helsinki, n.p.

Charlotte and Peter Fiell, eds., *1000 Lights, Vol. 1: 1879 to 1959*, Cologne, 2005, p. 399

**TAPIO WIRKKALA** 1915-1985

Group of three vases, model nos. 3215, 3522, 3561, including  
 'Varsanjalka' (Fool's foot) and 'Tuonelan Virta' (Stream of Hades),  
 1947-1960

Turned-mould blown, line-cut crystal glass.

Tallest: 40 cm (15¾ in.) high

Produced by Iittala, Finland. Underside of each incised with *TAPIO  
 WIRKKALA - IITTALA*.

**Estimate** £6,000-8,000 \$9,300-12,500 €7,000-9,300 ♠

**LITERATURE**

*Domus* (Milan), no. 259, 1951, p. 18

'Forms in Glass and Plywood', *Arts & Architecture*, July 1953, pp. 20-21

Marianne Aav, Rosa Barovier Mentasti and Gordon Bowyer, et al., *Tapio  
 Wirkkala - eye, hand and thought*, exh. cat., Museum of Art and Design,  
 Helsinki, 2000, p. 79, fig. 148, pp. 294, 300

Marianne Aav and Eeva Viljanen, eds., *Iittala: 125 Years of Finnish Glass  
 Complete History with all Designers*, Helsinki, 2006, pp. 130, 243-44





249

**BJÖRN WECKSTRÖM** b. 1935

*'Pisaranmuoto' (Big Drop) necklace, 1970*

Mould-cast precious metal and acrylic.

Pendant: 8 x 4.9 x 2.4 cm (3 $\frac{1}{8}$  x 1 $\frac{7}{8}$  x 0 $\frac{7}{8}$  in.), necklace: 34 cm (13 $\frac{3}{8}$  in.) long  
Produced by Lapponia, Finland. Reverse of pendant marked with maker's mark, 926H, Finnish assay mark, R7, *STERLING FINLAND* and chain marked *STERLING*.

**Estimate** £2,000-3,000 \$3,100-4,700 €2,300-3,500 ♠

#### LITERATURE

Marianne Aav and Nina Stritzler-Levine, eds., *Finnish Modern Design: Utopian Ideals and Everyday Realities: 1930-1997*, exh. cat., The Bard Graduate Center for Studies in the Decorative Arts, New Haven, 1998, p. 352, fig. 126





250

**TAPIO WIRKKALA** 1915-1985

*Large 'Ice' dish, model no. 3442, 1970-1973*

Centrifugal-cast glass.

39.3 cm (15½ in.) diameter

Produced by Iittala, Finland. Manufacturer's label *MADE IN FINLAND* and underside incised with *TAPIO WIRKKALA - 3442*.

**Estimate** £4,000-6,000 \$6,200-9,300 €4,700-7,000 ♠

**LITERATURE**

Marianne Aav, Rosa Barovier Mentasti and Gordon Bowyer, et al., *Tapio Wirkkala - eye, hand and thought*, exh. cat., Museum of Art and Design, Helsinki, 2000, p. 318



251

**BJÖRN WECKSTRÖM** b. 1935

*'Flowering Wall' necklace, 1970*

Precious metal, tourmalines.

Pendant: 10.3 x 4.3 cm (4 x 1¾ in.), necklace: 19 cm (7½ in.) long

Produced by Lapponia, Finland. Reverse of pendant marked with maker's mark, 750, Finnish assay mark, town mark, R7, FINLAND, BW and chain marked with Finnish assay mark.

**Estimate** £6,000-8,000 \$9,300-12,500 €7,000-9,300 ♠

#### LITERATURE

*Björn Weckström*, Helsinki, 1980, p. 19





252

**TAPIO WIRKKALA** 1915-1985

'Leaf' dish, circa 1951

Birch laminated plywood.

4.3 x 25.3 x 21.8 cm (1¾ x 9⅞ x 8⅝ in.)

Produced by Martti Lindqvist, Finland. Underside incised with W.

**Estimate** £4,000-6,000 \$6,200-9,300 €4,700-7,000 ♠

**LITERATURE**

Edgar Kaufmann Jr, 'The Wonderworks of Tapio Wirkkala', *Interiors*, November 1951, p. 95

*Domus* (Milan), no. 259, 1951, p. 18; no. 266, January 1952, pp. 18, 44

'Forms in Glass and Plywood', *Arts & Architecture*, July 1953, pp. 20-21

Marianne Aav and Nina Stritzler Levine, eds., *Finnish Modern*

*Design: Utopian Ideals and Everyday Realities, 1930-1997*,

New York, 1998, p. 247

Marianne Aav, Rosa Barovier Mentasti and Gordon Bowyer, et al.,

*Tapio Wirkkala - eye, hand and thought*, exh. cat., Museum of Art and Design, Helsinki, 2000, p. 224, p. 252, fig. 435, p. 262, fig. 45





253

**ELIS KAUPPI** 1921-2004

*Necklace and ring, 1970*

Precious metal.

Pendant: 5.7 cm (2¼ in.) drop, necklace: 12.9 cm (5½ in.) diameter; ring: 3.3 x 1.9 x 2.5 cm (1¼ x ¾ x 7⁄8 in.)

Produced by Kupittaa Kulta, Finland. Reverse of pendant marked with maker's mark, 925S, *FINLAND* and chain impressed with maker's mark, 925S and *FINLAND*. Ring with maker's mark, Finnish assay mark, 925H, town mark, R7.

**Estimate** £3,000-4,000 \$4,700-6,200 €3,500-4,700 ♠

254

**TIMO SARPANEVA** 1926-2006

*Group of five 'Archipelago' vases, model no. 3144, circa 1978*

Glass.

Tallest: 23.5 cm (9¼ in.) high

Produced by Iittala, Finland. Underside of three incised with *TIMO SARPANEVA* and two incised *TIMO SARPANEVA - 3144*.

**Estimate** £4,000-6,000 \$6,200-9,300 €4,700-7,000 ♠





255

**OIVA TOIKKA** b. 1931

*'Kiikkuri' (Bird)*, circa 1972

Coloured glass.

25.4 x 40.3 x 14.1 cm (10 x 15 $\frac{7}{8}$  x 5 $\frac{1}{2}$  in.)

Produced by Nuutajärvi Notsjö, Finland. Underside incised with artist's signature *Oiva Toikka* and *Nuutajärvi Notsjö*.

**Estimate** £3,000-5,000 \$4,700-7,800 €3,500-5,800 ♠

**PROVENANCE**

Gifted by the artist

**LITERATURE**

Oiva Toikka, *Birds by Toikka*, Helsinki, 2008, p. 20



256

**KAJ FRANCK** 1911-1989

*Group of seven carafes, 1954-1960*

Coloured glass.

Tallest: 23.1 cm (9½ in.) high

Produced by Nuutajärvi Notsjö, Finland.

**Estimate** £2,000-3,000 \$3,100-4,700 €2,300-3,500 ♠

**LITERATURE**

Marianne Aav and Nina Stritzler-Levine, eds., *Finnish Modern Design: Utopian Ideals and Everyday Realities: 1930-1997*, exh. cat., The Bard Graduate Center for Studies in the Decorative Arts, New Haven, 1998, pp. 298, 299, figs. 54-55







SWE





DEN





257

**WILHELM KÅGE** 1889-1960

*Vase, from the 'Surrea' series, circa 1940*

White earthenware covered in matt white glaze.

32 cm (12 $\frac{5}{8}$  in.) high

Produced by Gustavsberg, Sweden. Manufacturer's logo and stamp with *GUSTAVSBERG SURREA KÅGE* and impressed under the glaze *S*.

**Estimate** £10,000-15,000 \$15,600-23,400 €11,600-17,500 ♠

**LITERATURE**

Jennifer Hawkins Opie, *Scandinavia: Ceramics & Glass in the Twentieth Century*, London, 1989, p. 110, fig. 354



258

**AXEL EINAR HJORTH** 1888-1959

*'Grand' chest of drawers, circa 1930*

Birch-veneered wood, ebonised wood.

78.2 x 93.4 x 47.8 cm (30¾ x 36¾ x 18⅞ in.)

Manufactured by Nordiska Kompaniet, Sweden. Reverse with manufacturer's metal label impressed with *NK R 34533 - C181030*.

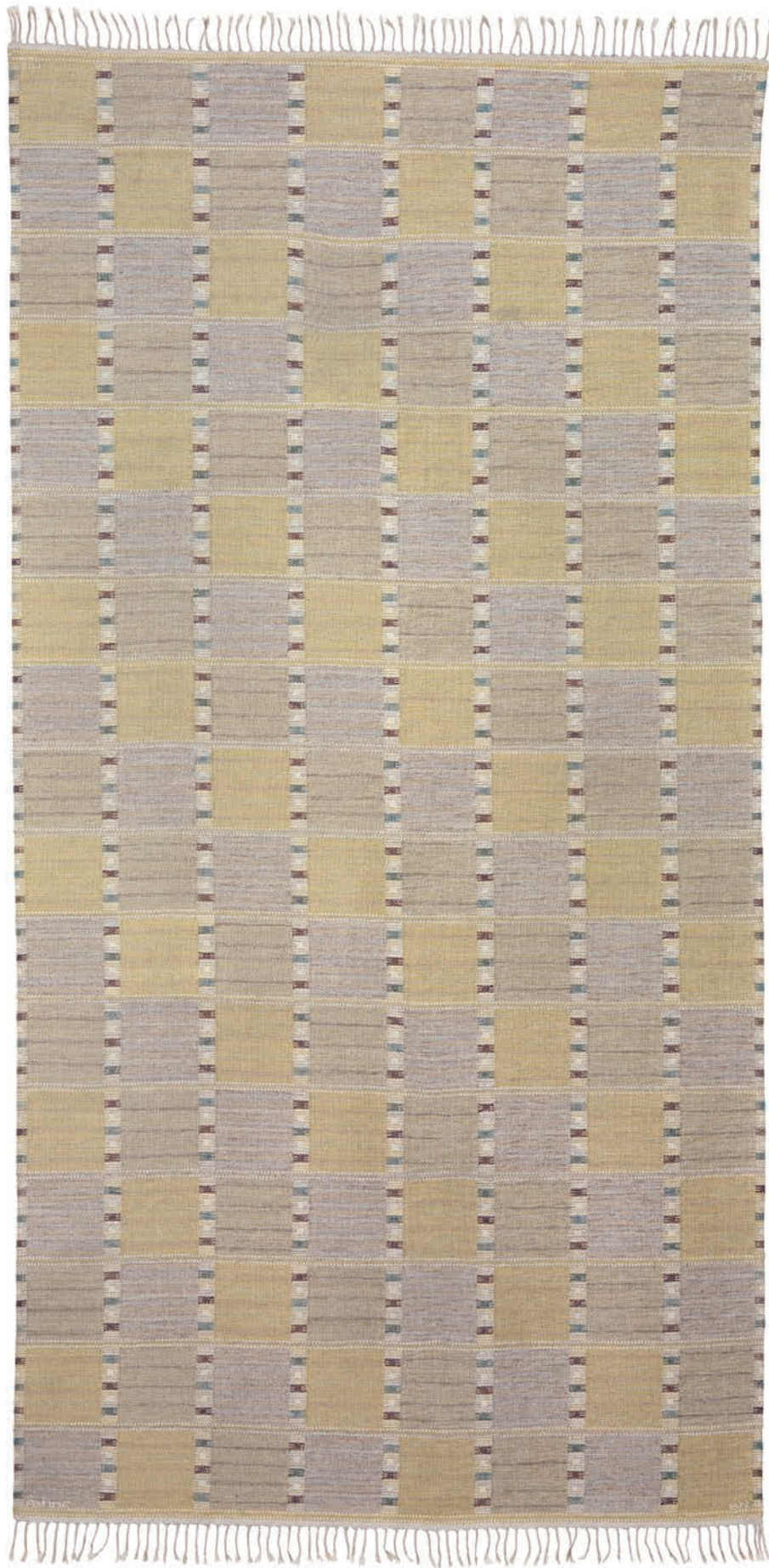
**Estimate** £15,000-20,000 \$23,400-31,200 €17,500-23,300 ♠

**LITERATURE**

Christian Björk, *Axel Einar Hjorth: möbelarkitekt*, Stockholm, 2009, p. 114

The present model chest of drawers was designed in 1929 and exhibited at the International Stockholm Fair, 1930





259

**BARBRO NILSSON** 1899-1983

'*Falurutan gul II*' rug, designed 1952

Handwoven wool on a linen warp.

448 x 219 cm (176<sup>3</sup>/<sub>8</sub> x 86<sup>1</sup>/<sub>4</sub> in.)

Produced by Märta Måås-Fjetterström AB, Båstad, Sweden. Woven manufacturer's mark with AB MMF and artist's initials BN.

**Estimate** £10,000-12,000 \$15,600-18,700 €11,600-14,000 ♣

#### LITERATURE

Viggo Sten Möller, *En bok om Barbro Nilsson*, Stockholm, 1977, p. 68 for the design

Märta Måås-Fjetterström: *Märta flyger igen! 90 år med Märta Måås-Fjetterström*, exh. cat., Liljevalchs konsthall, Stockholm, 2009, p. 153 for the design



260

ATTRIBUTED TO

**OSCAR NILSSON**

*Table, circa 1934*

Ebony, pear wood.

74.4 x 189.3 x 70 cm (29¼ x 74½ x 27½ in.)

Produced by Hjalmar J. Jackson, Sweden.

**Estimate** £70,000-100,000 \$109,000-156,000 €81,500-116,000

**LITERATURE**

*Tidskrift för Snickeri och Möbelkonst* (Stockholm), December 1934, p. 13



“...The new architecture...will be a product of all that is alive and experienced first hand; an art of the people, for the people.” JOSEF FRANK

261

**JOSEF FRANK** 1885-1967

*Cabinet*, circa 1937

Mahogany-veneered wood, mahogany, chintz, birch, brass.

130 x 121.8 x 42.4 cm (51½ x 47⅞ x 16¾ in.)

Manufactured by Svenskt Tenn, Sweden.

**Estimate** £40,000-60,000 \$62,300-93,500 €46,600-69,900 ♠

**LITERATURE**

*Nyt Tidsskrift For Kunstindustri* (Stockholm), no. 4, April 1940, p. 64

*Form* (Stockholm), no. 1, 1938, n.p. for a similar example

Mattis Hörlén and Åke H Hultdt, *Konsthantverk Och Hemslöjd I Sverige*

1930-1940, Gothenburg, 1941, p. 376

*Josef Frank: 1885-1967 - Minnesutställning*, exh., cat, National Museum of Stockholm, 1968, p. 33 for a similar example

1885-1985: *Josef Frank, 100 år - Jubileumsutställning hösten 1985*, exh. cat.,

Svenskt Tenn, Stockholm, 1985, p. 23 for a similar example

Nina Stritzler-Levine, ed., *Josef Frank, Architect and Designer: An Alternate Vision of the Modern Home*, New Haven, 1996, p. 71, fig. 4-9 for a

similar example

Christopher Long, *Josef Frank: Life and Work*, Chicago, 2002, p. 235, fig.

218 for a similar example







262

**BARBRO NILSSON** 1899-1983

*'Salerno grå Kristianstad' rug, designed 1948*

Handwoven wool on a linen warp.

323 x 240 cm (127 1/8 x 94 1/2 in.)

Manufactured by Märta Måås-Fjetterström AB, Båstad, Sweden. Woven manufacturer's mark with AB MMF and artist's initials BN.

**Estimate** £8,000-10,000 \$12,500-15,600 €9,300-11,600 ♠

#### LITERATURE

*Form* (Stockholm), no. 1, 1948, p. 138 for the design

Nazanin Yachar, *Tappeti svedesi e mobili scandinavi, anni 1920-1960*, exh. cat., Milan, 1998, p. 39 for the design

*Märta Måås-Fjetterström: Märta flyger igen! 90 år med Märta Måås-Fjetterström*, exh. cat., Liljevalchs konsthall, Stockholm, 2009, p. 151 for the design



263

**NILS FUGSTEDT and BJÖRN TRÄGÅRDH** 1881-1954, 1908-1998

*'Noah's Ark' set of three nesting tables, model no. 423, 1929*

Pewter, stained birch.

Largest: 55.8 x 65.9 x 33.8 cm (21 $\frac{7}{8}$  x 25 $\frac{7}{8}$  x 13 $\frac{1}{4}$  in.)

Manufactured by AB Nordiska Kompaniet for Svenskt Tenn, Sweden.

Tabletop impressed with manufacturer's angel mark and  
SVENSKT TENN STOCKHOLM D8.

**Estimate** £25,000-35,000 \$38,900-54,500 €29,100-40,800 ♠

**LITERATURE**

*Form* (Stockholm), 1932, p. 275

Hedvig Hedqvist, Rikard Jacobson and Jan von Gerber,  
*Modernt Svenskt Tenn*, Stockholm, 2004, p. 59



264

**AXEL EINAR HJORTH and NILS FOUGSTEDT**

1888-1959, 1881-1954

*Table, 1920s*

Engraved pewter, stained birch, rosewood, boxwood inlays.

62 x 88.7 x 55.5 cm (24<sup>3</sup>/<sub>8</sub> x 34<sup>7</sup>/<sub>8</sub> x 21<sup>1</sup>/<sub>8</sub> in.)

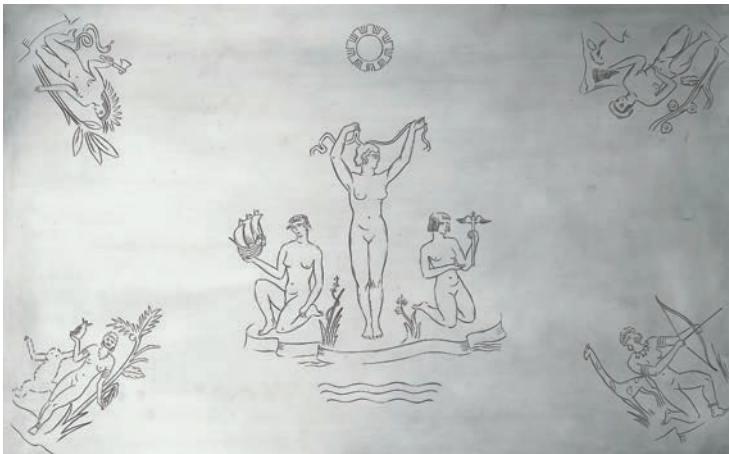
Manufactured by AB Nordiska Kompaniet for Svenskt Tenn, Sweden.

Tabletop impressed with manufacturer's angel mark and *SVENSKT TENN STOCKHOLM F8*.

**Estimate** £15,000-25,000 \$23,400-38,900 €17,500-29,100 ♠

**LITERATURE**

Hedvig Hedqvist, Rikard Jacobson and Jan von Gerber, *Modernt Svenskt Tenn*, Stockholm, 2004, p. 59









265

**CARL-HARRY STÅLHANE** 1920-1990

*Group of eight vessels, 1950s-1960s*

Glazed stoneware.

Largest: 31 cm (12¼ in.) high

Produced by Rörstrand, Sweden. Underside of each incised with manufacturer's mark *R SWEDEN CHS* and glaze code.

**Estimate** £5,000-7,000 \$7,800-10,900 €5,800-8,200 ♣

266

**ANN-MARI LINDBOM** 1916-1992

*'Rödbroka' rug, 1953*

Handwoven wool on a linen warp.

312.7 x 228.6 cm (123⅞ x 90 in.)

Produced by Märta Måås-Fjetterström AB, Båstad, Sweden. Woven with manufacturer's mark *AB MMF* and artist's initials *AML*.

**Estimate** £20,000-30,000 \$31,200-46,700 €23,300-34,900 ♣

#### LITERATURE

*Form* (Stockholm), 1945, p. 18; 1948, p. 139 for the design

*Märta Måås-Fjetterström: Märta flyger igen! 90 år med Märta Måås-Fjetterström*, exh. cat., Liljevalchs konsthall, Stockholm, 2009, pp. 162-63 for the design







267

**AXEL EINAR HJORTH** 1888-1959

*'Caesar' table*, circa 1928

Gilded birch, burr walnut-veneered wood.

72 x 174 x 75.2 cm (28<sup>3</sup>/<sub>8</sub> x 68<sup>1</sup>/<sub>2</sub> x 29<sup>5</sup>/<sub>8</sub> in.)

Manufactured by AB Nordiska Kompaniet, Sweden.

Underside with manufacturer's metal label impressed

*A·B·NORDISKA KOMPANIET C21722 – R33235.*

**Estimate** £25,000-30,000 \$38,900-46,700 €29,100-34,900 ♠

**LITERATURE**

Christian Björk, *Axel Einar Hjorth: Möbelarkitekt*, Stockholm, 2009,  
pp. 59, 76

The present model table was exhibited in the Nordiska  
Kompaniet room at the International Exposition, Barcelona, 1929





268

**JOSEF FRANK** 1885-1967

*Table*, 1930s

Burr elm-veneered wood, walnut, ebony, fruit wood.

66.2 x 90 x 90 cm (26 $\frac{1}{8}$  x 35 $\frac{3}{8}$  x 35 $\frac{3}{8}$  in.)

Manufactured by Haus und Garten, Austria.

**Estimate** £4,000-6,000 \$6,200-9,300 €4,700-7,000 ♠

**PROVENANCE**

Eugen Schüssler, Vienna, Austria



269

**JOSEF FRANK** 1885-1967

*Armchair*, circa 1925

Teak, leather, brass.

91.6 x 68.4 x 72.3 cm (36 $\frac{1}{8}$  x 26 $\frac{7}{8}$  x 28 $\frac{1}{2}$  in.)

Manufactured by Svenskt Tenn, Sweden.

**Estimate** £4,000-7,000 \$6,200-10,900 €4,700-8,200 ♠

**LITERATURE**

Nina Stritzler-Levine, *Josef Frank: Architect and Designer: An Alternative Vision of the Modern Home*, New York, 1996, p. 181 for a similar example





270

**FOLKE BENSOW** 1886-1971

*Pair of benches, 1920s*

Cast iron, painted oak.

Each: 50.5 x 64 x 47.2 cm (19 $\frac{7}{8}$  x 25 $\frac{1}{4}$  x 18 $\frac{5}{8}$  in.)

Manufactured by Näfveqvarns Bruk AB, Sweden.

**Estimate** £8,000-12,000 \$12,500-18,700 €9,300-14,000 ♣

271

**BARBRO NILSSON** 1899-1983

*Large 'Salerno' rug, designed 1948, executed 1951*

Handwoven wool on a linen warp.

424 x 309 cm (166 $\frac{7}{8}$  x 121 $\frac{1}{8}$  in.)

Produced by Märta Måås-Fjetterström AB and woven by Maja Jansson, Båstad, Sweden. Woven with manufacturer's mark AB MMF and artist's initials BN.

**Estimate** £25,000-35,000 \$38,900-54,500 €29,100-40,800 ♣

#### LITERATURE

*Form* (Stockholm), no. 1, 1948, p. 138 for the design

Nazanin Yachar, *Tappeti svedesi e mobili scandinavi, anni 1920-1960*, exh. cat., Milan, 1998, p. 39 for the design

*Märta Måås-Fjetterström: Märta flyger igen! 90 år med Märta Måås-Fjetterström*, exh. cat., Liljevalchs konsthall, Stockholm, 2009, p. 151 for the design





BM 117

BM





272

**NILS FOUGSTEDT** 1881-1954

*Mirror, 1928*

Pewter, brass, mirrored glass.

61.3 x 40.6 cm (24 $\frac{1}{8}$  x 15 $\frac{7}{8}$  in.)

Manufactured by Svenskt Tenn, Sweden. Side impressed with manufacturer's angel mark *SVENSKT TENN STOCKHOLM B8*.

**Estimate** £4,000-6,000 \$6,200-9,300 €4,700-7,000 ♣

**LITERATURE**

'Suède', *Exposition Internationale Des Arts Décoratifs Et Industriels Modernes a Paris, 1925*, p. 100

The present model mirror was exhibited at the Exposition  
Internationale Des Arts Décoratifs Et Industriels Modernes, Paris, 1925

273

**AXEL EINAR HJORTH** 1888-1959

*High-backed 'Caesar' chair, circa 1928*

Leather, walnut.

117.3 x 66.5 x 73.5 cm (46 $\frac{1}{8}$  x 26 $\frac{1}{8}$  x 28 $\frac{7}{8}$  in.)

Manufactured by AB Nordiska Kompaniet, Sweden.

**Estimate** £10,000-15,000 \$15,600-23,400 €11,600-17,500 ♠

**LITERATURE**

Christian Björk, *Axel Einar Hjorth: möbelarkitekt*, Stockholm, 2009, pp. 59, 76

The present model chair was exhibited in the Nordiska Kompaniet room at the International Exposition, Barcelona, 1929







274

**JOSEF FRANK** 1885-1967

*Pair of candlesticks, circa 1956*

Pewter, coloured glass.

Each: 44.3 cm (17½ in.) high

Manufactured by Svenskt Tenn, Sweden. Underside of each impressed with manufacturer's angel mark, *SVENSKT TENN STOCKHOLM* and F9.

**Estimate** £2,000-3,000 \$3,100-4,700 €2,300-3,500 ♠

**LITERATURE**

'Svenskt Tenn: Strandvagen 5A - Stockholm', *Svenskt Tenn*, Stockholm, n.p. for similar examples

Monica Boman, Monica Eriksson, Hedvig Hedqvist, et al., *Estrid Ericson: Founder of Svenskt Tenn*, Stockholm, 1989, p. 133

275

**ERIK GUNNAR ASPLUND** 1885-1940

*'Asplund' ceiling light, designed for The Stockholm Library, circa 1927*

Opaque glass, patinated brass.

172 cm (67¾ in.) drop, 70 cm (27½ in.) diameter

Manufactured by Böhlmarks, Sweden. Frame with paper label

ASPLUND 1933 MAX 1 X 100 W GARSANS.

**Estimate** £9,000-12,000 \$14,000-18,700 €10,500-14,000 ▲

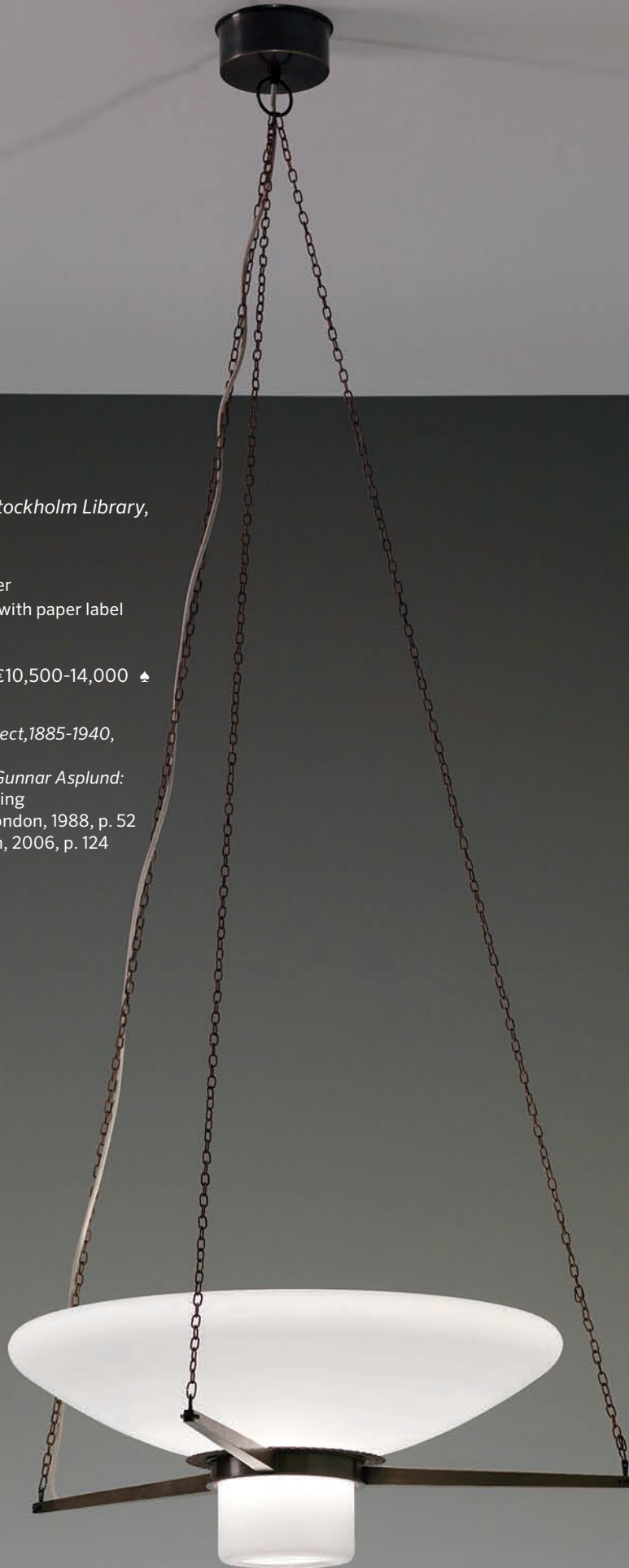
**LITERATURE**

Gustav Holmdahl, ed., *Gunnar Asplund, Architect, 1885-1940*, Stockholm, 1950, p. 131

Filippo Alison and Carl-Axel Acking, eds, *Erik Gunnar Asplund: Mobili e Oggetti*, Milan, 1985, p. 124 for a drawing

Dan Cruickshank, ed., *Erik Gunnar Asplund*, London, 1988, p. 52

Peter Blundell Jones, *Gunnar Asplund*, London, 2006, p. 124



276

**AXEL EINAR HJORTH** 1888-1959

*Desk and chair, circa 1933*

Desk: macassar-veneered wood; chair: macassar-veneered wood, leather, nickel-plated metal.

Desk: 74.8 x 204.7 x 68.4 cm (29½ x 80⅝ x 26⅞ in.); chair: 87.5 x 52.5 x 53 cm (34½ x 20⅝ x 20⅞ in.)

Manufactured by AB Nordiska Kompaniet, Sweden. Underside of desk with manufacturer's metal label impressed with *NK R 35460A C27831*.

**Estimate** £30,000-40,000 \$46,700-62,300 €34,900-46,600 ♠

**LITERATURE**

Bengt Theodor Lundberg, *Arts and crafts at the Swedish Chicago Exposition 1933*, Stockholm, 1933, pp. 32-33

Christian Björk, *Axel Einar Hjorth: möbelarkitekt*, Stockholm, 2009, p. 64

The present model desk was exhibited at Swedish Chicago Exposition, 1933









277

**JOSEF FRANK** 1885-1967

*'Diplomat' table, 1949*

Mahogany, mahogany-veneered wood.

48.1 x 105.3 x 105.3 cm (18 $\frac{7}{8}$  x 41 $\frac{1}{2}$  x 41 $\frac{1}{2}$  in.)

Manufactured by Svenskt Tenn, Sweden.

**Estimate** £3,000-5,000 \$4,700-7,800 €3,500-5,800 ♠

**LITERATURE**

Nina Stritzler-Levine, *Josef Frank: Architect and Designer: An Alternative Vision of the Modern Home*, New York, 1996, p. 67 for a drawing, p. 74

278

**JOSEF FRANK** 1885-1967

*Three-armed standard lamp, 1950s*

Brass, leather-wrapped tubular metal, fabric shades.

158.5 cm (62 $\frac{3}{8}$  in.) high

Manufactured by Svenskt Tenn, Sweden.

**Estimate** £4,000-6,000 \$6,200-9,300 €4,700-7,000 ♠

**LITERATURE**

Mattis Hörlén and Åke H Hultdt, *Konsthantverk Och Hemslöjd I Sverige 1930-1940*, Gothenburg, 1941, p. 68 for a similar example

Monica Boman, Monica Eriksson, Hedvig Hedqvist, et al., *Estrid Ericson: Founder of Svenskt Tenn*, Stockholm, 1989, p. 115 for a drawing of a similar example





279

**JOSEF FRANK** 1885-1967

*Pair of mirrors, 1950s*

Mirrored glass, bamboo.

Each: 57.8 x 47.2 x 6.9 cm (22¾ x 18⅝ x 2¾ in.)

Manufactured by Svenskt Tenn, Sweden.

**Estimate** £2,000-3,000 \$3,100-4,700 €2,300-3,500 ♣







280

**BRUNO MATHSSON** 1907-1988

*'Pernilla' lounge chair, 1940s*

Bent beech laminated plywood, beech, leather.

90.5 x 64 x 100 cm (35 $\frac{5}{8}$  x 25 $\frac{1}{4}$  x 39 $\frac{3}{8}$  in.)

Manufactured by Karl Mathsson, Sweden. Underside of frame with two partial manufacturer's paper labels.

**Estimate** £6,000-8,000 \$9,300-12,500 €7,000-9,300 ♠

**LITERATURE**

*Form* (Stockholm), no. 1, 1943, p. 54

Charlotte and Peter Fiell, *Scandinavian Design*, Cologne, 2002, p. 451

281

**BRUNO MATHSSON** 1907-1988

*Group of seven tables, 1960s-1970s*

Birch laminated plywood, burr birch laminated plywood.

Largest: 59.5 x 104.7 x 69.5 cm (23 $\frac{3}{8}$  x 41 $\frac{1}{4}$  x 27 $\frac{3}{8}$  in.)

Manufactured by Firma Karl Mathsson, Sweden. Underside of each work impressed with manufacturer's label.

**Estimate** £10,000-12,000 \$15,600-18,700 €11,600-14,000 ♠

**LITERATURE**

*Form* (Stockholm), no. 1, 1943, p. 105 for similar examples









282

**WILHELM KÅGE** 1889-1960

*‘Farsta’ vase, 1958*

Glazed stoneware.

14 cm (5½ in.) high

Produced by Gustavsberg, Sweden. Impressed *FARSTA* four times, *GUSTAVSBERG* with the studio mark and incised *KÅGE K.9*.

**Estimate** £3,000-5,000 \$4,700-7,800 €3,500-5,800 ♣

283

**WILHELM KÅGE** 1889-1960

*Large lidded ‘Farsta’ urn, 1939*

Glazed stoneware.

27 cm (10⅝ in.) high

Produced by Gustavsberg, Sweden. Impressed *FARSTA* six times, *GUSTAVSBERG* with the studio mark and incised *KÅGE I.9*.

**Estimate** £8,000-12,000 \$12,500-18,700 €9,300-14,000 ♣

284

**WILHELM KÅGE** 1889-1960

*‘Farsta’ bowl, 1953*

Glazed stoneware.

7.8 cm (3⅛ in.) high

Produced by Gustavsberg, Sweden. Incised *FARSTA KÅGE*, impressed with *GUSTAVSBERG* and the studio mark.

**Estimate** £1,000-2,000 \$1,600-3,100 €1,200-2,300 ♣



283



282



284







285

**WILHELM KÅGE** 1889-1960

'Farsta' vase, 1950s

Glazed stoneware.

19.8 cm (7¾ in.) high

Produced by Gustavsberg, Sweden. Impressed with *FARSTA* five times, *GUSTAVSBERG* and the studio mark, incised *KÅGE*.

**Estimate** £3,000-5,000 \$4,700-7,800 €3,500-5,800 ♣

286

**WILHELM KÅGE** 1889-1960

'Farsta' vase, 1955

Glazed and unglazed stoneware.

18.5 cm (7¼ in.) high

Produced by Gustavsberg, Sweden. Impressed with *FARSTA* five times, *GUSTAVSBERG* and the studio mark, incised *KÅGE Z*.

**Estimate** £3,000-5,000 \$4,700-7,800 €3,500-5,800 ♣

287

**WILHELM KÅGE** 1889-1960

*'Farsta' vase, 1967*

Glazed stoneware.

33.7 cm (13¼ in.) high

Produced by Gustavsberg, Sweden. Incised *FARSTA* six times, *KÅGE* and I9, impressed *GUSTAVSBERG* with the studio mark.

**Estimate** £5,000-7,000 \$7,800-10,900 €5,800-8,200 ♣‡







288

**WILHELM KÅGE** 1889-1960

*Unique 'Farsta Terra Spirea' footed vase, 1957*

Glazed stoneware.

15.4 cm (6 1/8 in.) high

Produced by Gustavsberg, Sweden. Impressed with *FARSTA* and the studio mark, incised *KÅGE A*.

**Estimate** £2,000-3,000 \$3,100-4,700 €2,300-3,500 ♠

289

**WILHELM KÅGE** 1889-1960

*'Farsta' vase, 1940s*

Unglazed stoneware.

23 cm (9 in.) high

Produced by Gustavsberg, Sweden. Impressed with *FARSTA* four times, *GUSTAVSBERG* and the studio mark, incised *KÅGE*.

**Estimate** £4,000-6,000 \$6,200-9,300 €4,700-7,000 ♠

290

**WILHELM KÅGE** 1889-1960

*Cylindrical ribbed 'Farsta' vase, 1960*

Glazed stoneware.

24 cm (9½ in.) high

Produced by Gustavsberg, Sweden. Impressed with *FARSTA* three times, *GUSTAVSBERG* and the studio mark, incised *KÅGE K.9*.

**Estimate** £10,000-15,000 \$15,600-23,400 €11,600-17,500



290



291



292

291

**WILHELM KÅGE** 1889-1960

*Cylindrical ribbed 'Farsta' vase, 1960*

Glazed stoneware.

27 cm (10⅝ in.)

Produced by Gustavsberg, Sweden. Impressed with *FARSTA* six times, *GUSTAVSBERG* Sweden and the studio mark, incised *KÅGE K.9*.

**Estimate** £5,000-8,000 \$7,800-12,500 €5,800-9,300 ♠

292

**WILHELM KÅGE** 1889-1960

*Cylindrical ribbed 'Farsta' vase, 1944*

Glazed stoneware.

20 cm (7⅞ in.) high

Produced by Gustavsberg, Sweden. Impressed with *FARSTA* three times, *GUSTAVSBERG* and the studio mark, incised *KÅGE* and painted 6746. Remnants of an old exhibition label with *Gustavsberg 11 Sweden*.

**Estimate** £6,000-8,000 \$9,300-12,500 €7,000-9,300



293

**GRETA MAGNUSSON-GROSSMAN** 1906-1999

*Standard lamp*, circa 1948

Brass, painted aluminium.

131.5 cm (51¾ in.) high

Manufactured by Ralph O. Smith, U.S.A.

**Estimate** £35,000-45,000 \$54,500-70,100 €40,800-52,400 ♠

**LITERATURE**

Lily Kane, *Greta Magnusson Grossman: Designer*, New York, 2000, pp. 18, 35

Evan Snyderman and Karin Åberg Wærn, eds., *Greta Magnusson Grossman,—A Car and Some Shorts: One Architect's Journey from Sweden to Southern California*, Sweden, 2010, pp. 43, 76, 149



294

**BRUNO MATHSSON** 1907-1988

*'Pernilla' chaise longue*, 1942

Beech laminated plywood, birch, leather.

97 x 174 x 63.5 cm (38¼ x 68½ x 25 in.)

Manufactured by Karl Mathsson, Sweden. Underside of frame with two manufacturer's paper labels *Bruno MATHSSON Möbler* and *Bruno MATHSSON FIRMA KARL MATHSSON MADE IN - VÄRNAMO - SWEDEN*, signed in pen 42.

**Estimate** £8,000-12,000 \$12,500-18,700 €9,300-14,000 ♠

**LITERATURE**

*Form* (Stockholm), no. 1, 1936, p. 138 for a similar example

Charlotte and Peter Fiell, *1000 chairs*, Cologne, 1997, p. 230 for a similar example





295

**GERTRUD LÖNEGREN** 1905-1970

*'Miranda' vase*, designed 1938

Glazed stoneware.

40 cm (15¾ in.) high

Produced by Rörstrand, Sweden. Underside impressed with *Rörstrand*  
*"Sverige" "Miranda" "LÖNEGREN"*.

**Estimate** £3,000-5,000 \$4,700-7,800 €3,500-5,800 ♠

**LITERATURE**

Åke H. Hult, *Konsthantverk och hemslöjd i Sverige 1930-1940*,  
Gothenburg, 1941, p. 164 for a similar example

296

**MATS THESELIUS** b. 1956

*Unique sofa, designed for the play Blithe Spirit by Noël Coward at the Östgötateatern, 1997*

Leather, tubular steel, castors.

79.5 x 164.1 x 83.5 cm (31¼ x 64⅝ x 32⅞ in.)

Produced by Källemo AB, Sweden.

**Estimate** £8,000-12,000 \$12,500-18,700 €9,300-14,000 ♣

**PROVENANCE**

Östgötateatern, Norrköping, Sweden, 1997





297

**CARL MALMSTEN** 1888-1972

*Early 'Berlin' two-seater sofa and pair of chairs, circa 1946*

Fabric, fruitwood.

Sofa: 80 x 146 x 82 cm (31½ x 57½ x 32¼ in.); armchairs 78 x 60 x 66 cm (30¾ x 23⅝ x 25⅞ in.)

Produced by Carl Malmsten, Sweden.

**Estimate** £15,000-25,000 \$23,400-38,900 €17,500-29,100 ♠

**LITERATURE**

'Råd vid bosättning för unga', *Modern Heminredning*, Stockholm, 1946, p. 8 for the chairs

Paul Artaria, *Carl Malmsten: Schwedische Möbel*, Basel, 1954, p. 60 for a similar example of the sofa







The background is a detailed marbled paper pattern. It features a repeating, symmetrical design of rounded, cell-like shapes. Each shape is primarily a deep red or burgundy color, with intricate, swirling patterns of lighter red, brown, and cream. Small, irregular patches of a vibrant green are scattered throughout the design, particularly within the rounded shapes. The overall effect is a rich, textured, and visually complex background.

# DENIM





MARK



“It always starts with a task. I never say to myself that now I’m going to make a piece of art. I tell myself I want to make a good chair.” HANS WEGNER

298

**HANS J. WEGNER** 1914-2007

*Prototype ‘Roman’ armchair, circa 1960*

Oak, leather.

72.2 x 74.4 x 47 cm (28¾ x 29¼ x 18½ in.)

Produced by cabinetmaker Johannes Hansen, Denmark.

**Estimate** £50,000-70,000 \$77,900-109,000 €58,200-81,500 ♠

**PROVENANCE**

Gifted as a retirement present from Hans Wegner to a Johannes Hansen cabinetmaker

**LITERATURE**

Grete Jalk, ed., *Dansk Møbelkunst gennem 40 aar, Volume 4: 1957-1966*, Copenhagen, 1987, p. 123

Johan Møller Nielsen, *Wegner - en Dansk Møbelkunstner*, Copenhagen, 1965, p. 77

The present model chair was exhibited in ‘Snedkerlaugets Møbeludstilling’, Kunstindustrimuseet, stand 25, Copenhagen, 16 September - 2 October, 1960







299

**POUL HENNINGSEN** 1894-1967

*Ceiling light, 5/5 type shades, circa 1926*

Opaque glass, nickel-plated metal.

Variable drop, 50 cm (19 $\frac{5}{8}$  in.) diameter

Manufactured by Louis Poulsen, Denmark. Light fixture impressed with *PAT. APPL.*

**Estimate** £14,000-18,000 \$21,800-28,000 €16,300-21,000 ♣

**LITERATURE**

Tina Jørstian and Poul Erik Munk Nielsen, eds., *Light Years Ahead: The Story of the PH Lamp*, Copenhagen, 1994, pp. 134-44 for images and drawings



**ARNE JACOBSEN** 1902-1971

*Tall-backed 'Oxford' chair, designed for the dining hall,*

*St. Catherine's College, Oxford, 1965*

Rosewood laminated moulded plywood.

127.5 x 46.5 x 45.3 cm (50¼ x 18¼ x 17⅞ in.)

Manufactured by Fritz Hansen, Denmark.

**Estimate** £16,000-20,000 \$24,900-31,200 €18,600-23,300 ♠

**LITERATURE**

Frederik Sieck, *Contemporary Danish Furniture Design*, Copenhagen, 1990, p. 125

Carsten Thau and Kjeld Vindum, *Arne Jacobsen*, Copenhagen, 2001, pp. 146, 182, 523



“The craftsman’s ability to form is probably the same as that of a sculptor. A chair is not a product of decorative art in space; it is a form and a space in itself.” FINN JUHL

301

**FINN JUHL** 1912-1989

‘Chieftain’ armchair, circa 1949

Teak, leather.

93.5 x 103.5 x 92 cm (36¾ x 40¾ x 36¼ in.)

Produced by cabinetmaker Niels Vodder, Denmark. Underside branded and impressed with *CABINETMAKER NIELS VODDER COPENHAGEN DENMARK DESIGN FINN JUHL*.

**Estimate** £50,000-75,000 \$77,900-117,000 €58,200-87,400 ♠

**LITERATURE**

Esbjörn Hiort, *Modern Danish Furniture*, New York, 1956, pp. 54-55

Grete Jalk, ed., *Dansk Møbelkunst gennem 40 aar, Volume 3: 1947-1956*, Copenhagen, 1987, pp. 124-25, 233, fig. 2, p. 311

Esbjörn Hiort, *Finn Juhl: Furniture, Architecture, Applied Art*, Copenhagen, 1990, pp. 23, 40-41

Martin Eidelberg, ed., *Design 1935-1965: What Modern Was*, New York, 1991, p. 187

Noritsugu Oda, *Danish Chairs*, San Francisco, 1996, pp. 92-93

Arne Karlsen, *Danish Furniture Design: in the 20th Century, Volume 2*, Copenhagen, 2007, pp. 106, 187-89





302

**POUL HENNINGSEN** 1894-1967

*'Spiral' ceiling light, designed for the University of Aarhus, 1942*

Aluminum, painted aluminium, chromium-plated metal.

Variable drop, 117 x 60 x 60 cm (46½ x 23½ x 23½ in.)

Manufactured by Louis Poulsen, Denmark.

**Estimate** £60,000-80,000 \$93,500-125,000 €69,900-93,200 ♠

**PROVENANCE**

Elementary School, Esbjerg, Denmark, 1950s

**LITERATURE**

Grete Jalk, ed., *Dansk Møbelkunst gennem 40 aar, Volume 4: 1957-1966*, Copenhagen, 1987, p. 91

Tina Jørstian and Poul Eric Munk Nielsen, eds., *Light Years Ahead, The Story of the PH Lamp*, Copenhagen, 1994, pp. 266-67

Peter Fiell, *Scandinavian Design*, Cologne, 2002, p. 424 for the front cover of a Louis Poulsen sales catalogue

Originally designed for the University of Aarhus, the present lot is a smaller version of the six examples that were produced for an Elementary School in Esbjerg, Denmark.





303

**FINN JUHL** 1912-1989

*Sofa*, circa 1951

Fabric, teak.

97.5 x 193 x 74 cm (38<sup>3</sup>/<sub>8</sub> x 75<sup>7</sup>/<sub>8</sub> x 29<sup>1</sup>/<sub>8</sub> in.)

Produced by Baker Furniture, Inc., USA.

**Estimate** £35,000-40,000 \$54,500-62,300 €40,800-46,600 ♠

LITERATURE

Grete Jalk, ed., *Dansk Møbelkunst gennem 40 aar, Volume 3: 1947-1956*, Copenhagen, 1987, p. 199

Esbjørn Hort, *Finn Juhl: Furniture, Architecture, Applied Art*, Copenhagen, 1990, p. 46





304

**GUTTE ERIKSEN** 1918-2008

*Large vase, circa 1985*

Glazed stoneware.

48.8 cm (19¼ in.) high

Impressed with artist's seal.

**Estimate** £6,000-9,000 \$9,300-14,000 €7,000-10,500 ♠

**PROVENANCE**

Collection of the artist

**LITERATURE**

Mona Clemmensed, *Dansk Kunsthåndværk* (Copenhagen), no. 3, 1992, pp. 8-14 for the present lot in the artist's studio



305

**JØRGEN ROED** 1808-1888

*Pair of stools, circa 1840*

Birch, painted birch, cane.

Each: 43.4 x 48 x 48 cm (17½ x 18¾ x 18¾ in.)

**Estimate** £15,000-20,000 \$23,400-31,200 €17,500-23,300

**LITERATURE**

Mirjam Gelfer-Jørgensen and Kirsten Lading Bidsted et al., *Herculanum paa Sjælland: klassicisme og nyantik i dansk møbeltradition*, Copenhagen 1988, p. 209, fig. 206





306

**CARL HALIER and KNUD ANDERSEN** 1873-1948, 1892-1966

*Lidded vase*, circa 1940

Glazed stoneware, bronze.

34.9 cm (13¾ in.) high

Produced by Royal Copenhagen, Denmark. Underside with artist's cipher, under the glaze painted with blue wave mark and incised with 20365. The lid and base each impressed with Royal Copenhagen mark and incised with KA.

**Estimate** £4,000-6,000 \$6,200-9,300 €4,700-7,000 ▲‡

**PROVENANCE**

François Joseph Graf



307

**POUL HENNINGSEN** 1894-1967

*Early 'Artichoke' ceiling light, designed 1957*

Copper, painted metal.

Variable drop, 66 cm (25 $\frac{7}{8}$  in.) diameter

Manufactured by Louis Poulson, Denmark.

**Estimate** £5,000-8,000 \$7,800-12,500 €5,800-9,300 ♠

**LITERATURE**

Tina Jørstian and Poul Erik Munk Nielsen, eds., *Light Years Ahead: The Story of the PH Lamp*, Copenhagen, 1994, pp. 276-77, 280



308

**FLEMMING LASSEN** 1902-1984

*Armchair*, circa 1938

Sheepskin, Cuban mahogany.

85.7 x 86.5 x 84.5 cm (33¾ x 34 x 33¼ in.)

Produced by cabinetmaker Thorald Madsen, Denmark.

**Estimate** £25,000-35,000 \$38,900-54,500 €29,100-40,800 ♠

LITERATURE

*Nyt Tidsskrift For Kunstindustri* (Stockholm), no. 1, January 1930, pp. 131, 169; no. 11, November 1935, p. 171 for drawings and a period images  
‘A.J. Iversen, Snedkervirksomhed 1916-1941’, *Møbelhaandværk Gennem 25 Arr*, Copenhagen, 1941, p. 29  
Grete Jalk, ed., *Dansk Møbelkunst gennem 40 aar, Volume 2: 1937-1946*, Copenhagen, 1987, p. 59, fig. 3

The present model armchair was exhibited at Stand 20 of the 1938  
Copenhagen Cabinetmakers’ Guild Exhibitions at the Charlottenborg,  
15 September-2 October.





309

**HANS J. WEGNER** 1914-2007

*Early extendable dining table*, designed 1952

Oak.

71.9 x 308 x 130.5 cm (28¼ x 121¼ x 51⅜ in.) fully extended

Produced by Johannes Hansen, Denmark. Underside with manufacturer's branded impressed logo and *JOHANNES HANSEN COPENHAGEN DENMARK*.

**Estimate** £15,000-20,000 \$23,400-31,200 €17,500-23,300 ♠

**LITERATURE**

Johan Møller Nielson, *Wegner en Dansk Møbelkunstner*, Copenhagen, 1965, p. 105

Grete Jalk, ed., *Dansk Møbelkunst gennem 40 aar, Volume 3: 1947-1956*, Copenhagen, 1987, p. 213



310

**HANS J. WEGNER** 1914-2007

*Set of six 'Cowhorn' dining chairs, model no. JH 505, circa 1952*

Oak, cane.

Each: 73.4 x 58.9 x 43.9 cm (28 7/8 x 23 1/4 x 17 1/4 in.)

Produced by Johannes Hansen, Denmark. Underside of each chair with manufacturer's metal label impressed JOHANNES HANSEN CABINET MAKER COPENHAGEN - DENMARK DESIGN: H.J. WEGNER.

**Estimate** £30,000 - 40,000 ♠

**LITERATURE**

Johan Møller Nielson, *Wegner en Dansk Møbelkunstner*, Copenhagen, 1965, p. 76

Johannes Hansens, *Wegner Møbelsnedkeri*, Copenhagen, 1970, n.p.

Henrik Sten Mølller, *Tema Med Variationer: Hans J. Wegner's Møbler*, Tønder, 1979, p. 49

Grete Jalk, ed., *Dansk Møbelkunst gennem 40 aar, Volume 3: 1947-1956*, Copenhagen, 1987, p. 213, figs. 1-2

Dansk Møbel Kunst, *Hans J. Wegner*, Copenhagen, 2007, pp. 36-37

Arne Karlsen, *Danish Furniture Design: in the 20th Century, Volume 2*, Copenhagen, 2007, p. 94











311

**AXEL JOHANN SALTO** 1889-1961

'Sommervase', 1975-1979

Stoneware, Sung glaze.

31.3 cm (12<sup>3</sup>/<sub>8</sub> in.) high

Produced by Royal Copenhagen, Denmark. Crown and **ROYAL COPENHAGEN DENMARK** stamp in green under the glaze with painted blue wave mark, 20250 and B, incised in the body with **SALTO**.

**Estimate** £12,000-16,000 \$18,700-24,900 €14,000-18,600 ♠

#### LITERATURE

Axel Salto, 'Salto's Keramik' Copenhagen, 1930, n.p. for a woodblock print of a similar example

Axel Salto, *Kusai's Handelser*, Copenhagen, 1934, n.p. for a woodblock print of branches, fruit and nesting birds



312

**FINN JUHL** 1912-1989

*Pair of armchairs, model no. NV 45, circa 1945*

Walnut, fabric.

Each: 83 x 69.3 x 77.9 cm (32 $\frac{5}{8}$  x 27 $\frac{1}{4}$  x 30 $\frac{5}{8}$  in.)

Produced by cabinetmaker Niels Vodder, Denmark. Underside of each impressed with *DENMARK*.

**Estimate** £20,000-30,000 \$31,200-46,700 €23,300-34,900 ♣

#### LITERATURE

Grete Jalk, ed., *Dansk Møbelkunst gennem 40 aar, Volume 2: 1937-1946*, Copenhagen, 1987, pp. 276-77

Esbjørn Hiort, *Finn Juhl*, Copenhagen, 1990, pp. 25, 34-35, 101

Patricia Yamada, ed., *Finn Juhl Memorial Exhibition*, exh. cat., Osaka, 1990, pp. 42-45

Noritsugu Oda, *Danish Chairs*, San Francisco, 1999, p. 86

Bodil Busk Laursen, Søren Matz and Christian Holmsted Olesen, eds., *Mesterværker: 100 års dansk møbelsnedkeri (English summary)*, Copenhagen, 2003, p. 4

313

**PEDER MOOS** 1906-1991

*Unique work table, 1947*

Walnut, beech.

70 x 206 x 143 cm (27½ x 81⅛ x 56¼ in.)

Produced by cabinetmaker Peder Moos, Denmark.

**Estimate** £70,000-90,000 \$109,000-140,000 €81,500-105,000 ♠

**PROVENANCE**

Collection of the artist







314

**GUNNAR AAGAARD ANDERSEN** 1919-1982

*Stool*, circa 1980

Ash.

36.5 x 73.5 x 43 cm (14 $\frac{3}{8}$  x 28 $\frac{7}{8}$  x 16 $\frac{7}{8}$  in.)

Manufactured by PP Møbler, Denmark.

**Estimate** £10,000-15,000 \$15,600-23,400 €11,600-17,500 ♠

**LITERATURE**

Frederik Sieck, *Contemporary Danish Furniture Design – a short illustrated review*, Copenhagen, 1990, p. 42

Bodil Busk Laursen, Søren Matz and Christian Holmsted Olesen, eds.,

*Mesterværker: 100 års dansk møbelsnedkeri (English summary)*,

Copenhagen, 2000, p. 138

Arne Karlsen, *Danish Furniture Design: in the 20th Century, Volume 2*,

Copenhagen, 2007, p. 221







“He is so close to the very newest that we sometimes think he is ahead of it.” POUL HENNINGSEN ON ARNE JACOBSEN

315

**ARNE JACOBSEN** 1902-1971

*Pair of 'Aarhus' ceiling lights, 1940*

Brass, opaque glass.

Each: variable drop, 47.1 cm (18½ in.) diameter

Manufactured by Louis Poulson, Denmark.

**Estimate** £10,000-15,000 \$15,600-23,400 €11,600-17,500 ♠

**PROVENANCE**

City Hall, Aarhus, Denmark





316

**VILHELM LAURITZEN** 1894-1984

*'Embassy' chandelier, designed for the Living Room of the Danish Ambassador's Residence, Washington, D.C., 1960*

Glass, tubular brass, brass.

Variable drop, 171 cm (67¾ in.) diameter

Manufactured by Louis Poulsen, Denmark.

**Estimate** £30,000-40,000 \$46,700-62,300 €34,900-46,600 ♠

**PROVENANCE**

The Danish Ambassador's residence, Washington, D.C.

**LITERATURE**

*LP nyt* (Copenhagen), 28 November, 1960, pp. 139-40

Esbjørn Hort, *Finn Juhl: Furniture, Architecture, Applied Art*, Copenhagen, 1990, p. 25

Lisbet Balslev Jørgensen, *Vilhelm Lauritzen: En Moderne Arkitekt*, Copenhagen, 1994, p. 105







317

**HENNING KOPPEL** 1918-1981

*Necklace, model no. 130B, circa 1950*

Precious metal, hematite cabochon.

18 cm (7½ in.) diameter

Produced by Georg Jensen, Denmark. Marked with *GEORG JENSEN, 925S, DENMARK, 130* and *B.*

**Estimate** £2,000-3,000 \$3,100-4,700 €2,300-3,500 ♠



318

**AXEL JOHANN SALTO** 1889-1961

*Vase in the 'Sprouting' style, circa 1965*

Stoneware Sung glazes.

24.4 cm (9½ in.) high

Produced by Royal Copenhagen, Denmark. Crown and *ROYAL COPENHAGEN DENMARK* stamp in green under the glaze with painted blue wave mark and 20810, incised in the body *SALTO*.

**Estimate** £18,000-22,000 \$28,000-34,300 €21,000-25,600 ♠

**LITERATURE**

*Nyt Tidsskrift For Kunstindustri* (Stockholm), no. 7, July 1945, front cover, p. 72 for a similar example

Axel Salto, *Den Spirende Stil*, Copenhagen, 1949, pp. 92, 94 for similar examples

Pierre Lübecker, *Salto*, Copenhagen, 1952, n.p. for a similar example

Lars Dybdahl, ed., *Det Brændende Nu? Axel Salto*, exh. cat., Kunstindustrimuseet, Copenhagen, 1989, p. 44 for a similar example  
*Forces of Nature: Axel Salto: Ceramics & Drawings*, exh. cat., Antik, New York, 1999, p. 9 for a similar example



319

**AXEL JOHANN SALTO** 1889-1961

*Vase, 1941*

Stoneware, Sung glazes.

24.4 cm (9½ in.) high

Produced by Royal Copenhagen, Denmark. Crown and *ROYAL COPENHAGEN DENMARK* stamp in green under the glaze with painted blue wave mark, incised in the body with *SALTO* and 1941.

**Estimate** £12,000-15,000 \$18,700-23,400 €14,000-17,500 ♠





320

**FRITZ HANSEN**

*Sofa and pair of armchairs, model nos. 1669a, 1669, circa 1938*

Fabric, mahogany.

Sofa: 76.7 x 185 x 81 cm (30¼ x 72⅞ x 31⅞ in.); armchairs: 77.3 x 82 x 79.5 cm (30⅜ x 32¼ x 31¼ in.)

Produced by Fritz Hansen, Denmark. Interior of apron with manufacturer's printed and handwritten paper label 8 / 2 1669a sofa Antal / Or. 5082.

**Estimate** £20,000-30,000 \$31,200-46,700 €23,300-34,900

**LITERATURE**

*Fritz Hansen*, sales catalogue, Copenhagen, 1942, pp. 17, 19

Present models are recorded in the Fritz Hansen Republic,  
Archive, Copenhagen







Σ 321

**FINN JUHL** 1912-1989

*'Judas' extendable dining table, circa 1949*

Rosewood-veneered wood, rosewood, precious metal.

71.2 x 288.9 x 119.5 cm (28 x 113¾ x 47 in.) fully extended

Produced by cabinetmaker Niels Vodder, Denmark.

Underside with metal label impressed with *ILLUMS BOLIGHUS KØBENHAVN*.

**Estimate** £30,000-40,000 \$46,700-62,300 €34,900-46,600 ♠

**LITERATURE**

Esbjørn Hiort, *Modern Danish Furniture*, New York, 1956, p. 58

Patricia Yamada, ed., *Finn Juhl Memorial Exhibition*, exh. cat., Osaka, 1990, p.

25

Henrik Wivel, *Finn Juhl*, Humlebæk, 2004, p. 65

Per H. Hansen, *Finn Juhl og hans hus*, Copenhagen, 2009, pp. 101, 126, 186-87

Σ 322

**FINN JUHL** 1912-1989

*Set of six 'Egyptian' dining chairs, circa 1949*

Rosewood, leather.

Each: 89.3 x 54 x 54 cm (35½ x 21¼ x 21¼ in.)

Produced by cabinetmaker Niels Vodder, Denmark. Underside of each chair with manufacturer's label branded and impressed *CABINETMAKER NIELS VODDER COPENHAGEN DENMARK DESIGN FINN JUHL*.

**Estimate** £30,000-40,000 \$46,700-62,300 €34,900-46,600 ♠

**LITERATURE**

Esbjørn Hiort, *Modern Danish Furniture*, New York, 1956, p. 59

Arne Karlsen, ed., *Contemporary Danish Design*, Copenhagen, 1960, p. 53

Grete Jalk, ed., *Dansk Møbelkunst gennem 40 aar, Volume 3: 1947-1956*, Copenhagen, 1987, pp. 125, 270-71

Frederik Sieck, *Contemporary Danish Furniture Design - a short illustrated review*, Copenhagen, 1990, p. 17

Patricia Yamada, ed., *Finn Juhl Memorial Exhibition*, exh. cat., Osaka, 1990, pp. 25, 72-75 for images and drawings

Esbjørn Hiort, *Finn Juhl: Furniture, Architecture, Applied Art*, Copenhagen, 1990, pp. 40, 44-45 for images and drawings

Bodil Busk Laursen, Søren Matz and Christian Holmsted Olesen, eds., *Mesterværker: 100 års dansk møbelsnedkeri (English summary)*, Copenhagen, 2000, p. 155















323

**VILHELM LAURITZEN** 1894–1984

*Pair of wall lights, 1930s*

Aluminium, painted aluminium, brass.

Each: 16 x 14.5 x 14.2 cm (6¼ x 5¾ x 5½ in.)

Manufactured by Louis Poulsen, Denmark.

**Estimate** £4,000-6,000 \$6,200-9,300 €4,700-7,000 ♠

**LITERATURE**

Grete Jalk, ed., *Dansk Møbelkunst gennem 40 aar, Volume 3: 1947-1956*, Copenhagen, 1987, p. 67

Lisbet Balslev Jørgensen, *Vilhelm Lauritzen: En Moderne Arkitekt*, Copenhagen, 1994, front cover, p. 238 for similar examples

324

**LUDVIG PONTOPPIDAN**

*Pair of armchairs, 1950s*

Fabric, beech.

Each: 71.5 x 68.5 x 74.1 cm (28⅞ x 26⅞ x 29⅞ in.)

Produced by cabinetmaker Ludvig Pontoppidan, Denmark.

**Estimate** £6,000-9,000 \$9,300-14,000 €7,000-10,500 ♠

**PROVENANCE**

Collection of the designer





325

**HANS J. WEGNER** 1914-2007

*Pair of benches, model no. 574, circa 1958*

Teak.

Each: 30.2 x 159.4 x 42.7 cm (11 $\frac{7}{8}$  x 62 $\frac{3}{4}$  x 16 $\frac{3}{4}$  in.)

Produced by Johannes Hansen, Denmark. Underside with manufacturer's logo branded and impressed *JOHANNES HANSEN COPENHAGEN DENMARK*.

**Estimate** £16,000-18,000 \$24,900-28,000 €18,600-21,000 ♠

**LITERATURE**

Johan Møller Nielson, *Wegner en Dansk Møbelkunstner*, Copenhagen, 1965, pp. 49, 99

Johannes Hansens, *Wegner Møbelsnedkeri*, Copenhagen, 1970, n.p.



326

**AXEL JOHANN SALTO** 1889-1961

*Table lamp, 1968*

Stoneware, Sung glazes, paper shade.

69.3 cm (27¼ in.) high

Produced by Royal Copenhagen, Denmark. Manufacturer's partial paper label and crown and *ROYAL · COPENHAGEN · DENMARK* stamp in green under the glaze with painted blue 20659 and wave mark, incised in the body *SALTO* and 192-6.

**Estimate** £6,000-9,000 \$9,300-14,000 €7,000-10,500 ♠





327

**HANS J. WEGNER** 1914-2007

*Pair of 'Bear' chairs, 1960s*

Teak, fabric.

Each: 92.6 x 92 x 94 cm (36½ x 36¼ x 37 in.)

Produced by AP Stolen, Denmark. Underside with metal roundel

FURNITURE MAKERS DANISH CONTROL.

**Estimate** £25,000-30,000 \$38,900-46,700 €29,100-34,900 ♠

**LITERATURE**

Johan Møller Nielson, *Wegner en Dansk Møbelkunstner*, Copenhagen, 1965,  
p. 70 for a similar example

328

**HANS J. WEGNER** 1914-2007

‘Ox’ suite, model nos. AP-46, AP-47, AP-49, circa 1960

Fabric, matt chromium-plated tubular steel, leather.

Largest chair: 88.5 x 98 x 94 cm (34 $\frac{7}{8}$  x 38 $\frac{5}{8}$  x 37 in.); ottoman: 37 x 74 x 47 cm (14 $\frac{5}{8}$  x 29 $\frac{1}{8}$  x 18 $\frac{1}{2}$  in.)

Produced by AP Stolen, Denmark.

**Estimate** £20,000-25,000 \$31,200-38,900 €23,300-29,100 ♠

**LITERATURE**

Johan Møller Nielson, *Sitting Pretty: Wegner en Dansk Møbelkunstner*, Copenhagen, 1965, pp. 71-72

Frederik Sieck, *Contemporary Danish Furniture Design: A Short Illustrated Review*, Copenhagen, 1990, p. 219

Jens Bernsen, *Hans J. Wegner: Om Design*, exh. cat., Dansk Design Center, Copenhagen, 1995, pp. 19, 23, 43, 81

Noritsugu Oda, *Danish Chairs*, San Francisco, 1996, p. 121

Charlotte and Peter Fiell, *1000 Chairs*, Cologne, 1997, p. 416







329

**AXEL JOHANN SALTO** 1889-1961

*Vase with appliqués in the form of branches and fruit, 1935*

Stoneware, Sung glaze.

15 cm (5⅞ in.) high

Produced by Royal Copenhagen, Denmark. Painted blue under the glaze with SALTO 1935 3597.

**Estimate** £8,000-12,000 \$12,500-18,700 €9,300-14,000 ♠

#### LITERATURE

Axel Salto, *Salto's Keramik*, Copenhagen, 1930, n.p. for a woodblock print of a similar example

Axel Salto, *Kusai's Handelser*, Copenhagen, 1934, n.p. for a woodblock print of branches, fruit and nesting birds

330

**AXEL JOHANN SALTO** 1889-1961

*Vase with 'knobbed' style appliqués, circa 1940*

Stoneware, oxblood glaze.

21 cm (8¼ in.) high

Produced by Royal Copenhagen, Denmark. Painted blue wave mark under the glaze and incised in the body with 20559 SALTO.

**Estimate** £8,000-12,000 \$12,500-18,700 €9,300-14,000 ♠

#### LITERATURE

Axel Salto, *Salto's Keramik*, Copenhagen, 1930, n.p. for a woodblock print of a similar example

Axel Salto, *Kusai's Handelser*, Copenhagen, 1934, n.p. for a woodblock print of branches, fruit and nesting birds



331

**AXEL JOHANN SALTO** 1889-1961

*'The Source of Power'*, 1969-1974

Stoneware, oxblood glaze.

53.3 cm (21 in.) high

Produced by Royal Copenhagen, Denmark. Crown and ROYAL COPENHAGEN DENMARK stamp in green under the glaze with painted blue wave mark, numbered 21375, incised in the body SALTO.

**Estimate** £40,000-60,000 \$62,300-93,500 €46,600-69,900 ♣

**LITERATURE**

Leif Lautrup-Larsen, *Stentøj: Den Kongelige Porcelainsfabrik*, Copenhagen, 2007, p. 175 for a similar example



332

**AXEL JOHANN SALTO** 1889-1961

*Conical topped vase, 1957*

Stoneware, Sung glazes.

26.3 cm (10 $\frac{3}{8}$  in.) high

Produced by Royal Copenhagen, Denmark. Stamped in green under the glaze with *DENMARK* and painted under the glaze with blue wave mark and numbered 21455, incised in the body with *SALTO*.

**Estimate** £8,000-12,000 \$12,500-18,700 €9,300-14,000 ♣

**LITERATURE**

*Salto*, exh. cat., Maison du Danemark, Paris, 1956, n.p. for a drawing

333

**AXEL JOHANN SALTO** 1889-1961

*Pale yellow corn textured bulbous vase, 1937*

Glazed stoneware.

26.9 cm (10 $\frac{5}{8}$  in.) high

Produced by Royal Copenhagen, Denmark. Painted under the glaze with blue wave mark, incised in the body *SALTO* and 1937.

**Estimate** £8,000-12,000 \$12,500-18,700 €9,300-14,000 ♣

**LITERATURE**

Axel Salto, *Den Spirende Stil*, Copenhagen, 1949, p. 70 for a similar example



334

**PREBEN FABRICIUS and JØRGEN KASTHOLM**

1931-1984, 1931-2007

*Early pair of stools, model no. 4391, designed 1962*

Leather, stainless steel.

Each: 39.1 x 64.2 x 49.2 cm (15<sup>3</sup>/<sub>8</sub> x 25<sup>1</sup>/<sub>4</sub> x 19<sup>3</sup>/<sub>8</sub> in.)

Manufactured by Ivan Schlechter, Denmark. Impressed with manufacturer's logo and *STAINLESS STEEL DANMARK*.

**Estimate** £15,000-20,000 \$23,400-31,200 €17,500-23,300 ♠

**LITERATURE**

*Mobilia* (Copenhagen), no. 106, May 1964, pp. 27, 34





335

**FINN JUHL** 1912-1989

*Bowl*, 1951-1954

Teak.

16.5 x 34.4 x 37.5 cm (6½ x 13½ x 14¾ in.)

Produced by Kay Bojesen, Denmark. Underside impressed with *Kay Bojesen*.

**Estimate** £4,000-6,000 \$6,200-9,300 €4,700-7,000 ♠

#### LITERATURE

'9 nona triennale di milano 1951', *Domus* (Milan), no. 300, June 1951, p. 28  
 'Idea 53', *International Design Annual* (New York), 1953, p. 44, fig. 119  
 Arne Karlsen, ed., *Contemporary Danish Design*, Copenhagen, 1960, p. 57  
 Patricia Yamada, ed., *Finn Juhl Memorial Exhibition*, exh. cat., Osaka, 1990, pp. 96-97  
 Esbjørn Hiort, *Finn Juhl: Furniture, Architecture, Applied Art*, Copenhagen, 1990, pp. 22, 57, 65, 79, 100-01, 117, 125, 128 for drawing and images  
 Arne Karlsen, *Danish Furniture Design: in the 20th Century, Volume 2*, Copenhagen, 2007, p. 103



336

**EDVARD and TOVE KINDT-LARSEN** 1901-1982, 1906-1994

*Pair of 'Fireplace' chairs, circa 1939*

Beech, leather, fabric.

Each: 72.5 x 69.3 x 83 cm (28½ x 27¼ x 32⅝ in.)

Produced by Gustav Bertelsen, Denmark.

**Estimate** £15,000-20,000 \$23,400-31,200 €17,500-23,300 ♠

#### LITERATURE

*Nyt Tidsskrift For Kunstindustri* (Stockholm), no. 4, April 1941, p. 59; no. 8, August 1941, p. 112; no. 5, May 1942, n.p. for an advertisement; no. 6, June 1944, p. 93; no. 12, December 1945, p. 163

Grete Jalk, ed., *Dansk Møbelkunst gennem 40 aar, Volume 2: 1937-1946*, Copenhagen, 1987, pp. 109-10 for images and drawings





337

**POUL HENNINGSEN** 1894–1967

*Large ceiling light, 6/5 type shades, circa 1926–29*

Copper, nickel-plated metal.

Variable drop, 61 cm (24 in.) diameter

Manufactured by Louis Poulsen, Denmark. Shade fixture impressed with  
AT. APPL. PH-6.

**Estimate** £8,000–12,000 \$12,500–18,700 €9,300–14,000 ♠

**LITERATURE**

Tina Jørstian and Poul Erik Munk Nielsen, eds., *Light Years Ahead: The Story of the PH Lamp*, Copenhagen, 1994, p. 159

338

**KAARE KLINT** 1888-1954

*Early two-seater box-shaped sofa, model no. 4118, designed 1930*

Horsehair, Cuban mahogany.

86.1 x 133.9 x 78.6 cm (33 $\frac{7}{8}$  x 52 $\frac{3}{4}$  x 30 $\frac{7}{8}$  in.)

Produced by Rud. Rasmussen Snedkerier A/S, Denmark.

**Estimate** £10,000-15,000 \$15,600-23,400 €11,600-17,500 ♠

**LITERATURE**

Gorm Harkær, *Kaare Klint: Volume 2*, Copenhagen, 1988, p. 41

for a similar example

Arne Karlsen, *Danish Furniture Design: in the 20th Century, Volume 1*, Copenhagen, 2007, p. 42 for a similar example



**OLE WANSCHER** 1903-1985

*Two-seater sofa and pair of armchairs, model no. 149, circa 1949*

Rosewood, cane.

Sofa: 84 x 123.8 x 68.5 cm (33 $\frac{1}{8}$  x 48 $\frac{3}{4}$  x 26 $\frac{7}{8}$  in.);

each armchair: 83.5 x 64.5 x 68.5 cm (32 $\frac{7}{8}$  x 25 $\frac{3}{8}$  x 26 $\frac{7}{8}$  in.)

Produced by P. Jeppesen Mobelfabrik, Denmark.

**Estimate** £15,000-20,000 \$23,400-31,200 €17,500-23,300 ♠

**LITERATURE**

*Two Centuries of Danish Design*, exh. cat., The Victoria and Albert Museum, Copenhagen, 1968, p. 84

Frederik Sieck, *Contemporary Danish Furniture Design – a short illustrated review*, Copenhagen, 1990, p. 36 for the armchairs

Arne Karlsen, *Danish Furniture Design: in the 20th Century, Volume 2*, Copenhagen, 2007, pp. 57-59 for images and drawing for the armchairs









340

**AXEL JOHANN SALTO** 1889-1961

*Bowl in the 'knurled' style, 1949*

Stoneware, Sung glazes.

23 cm (9 in.) diameter

Produced by Royal Copenhagen, Denmark. Crown and ROYAL COPENHAGEN DENMARK stamp in green under the glaze with painted blue wave mark, incised in the body SALTO and numbered 20730 8097.

**Estimate** £3,000-5,000 \$4,700-7,800 €3,500-5,800 ♠

**LITERATURE**

*Nyt Tidsskrift For Kunstindustri* (Stockholm), Vol. V, 1932, p. 161 for a similar example

Axel Salto, *Den Spirende Stil*, Copenhagen, 1949, p. 14 for a similar example

Arne Karlsen, ed., *Contemporary Danish Design*, Copenhagen, 1960, p. 51

341

**AXEL JOHANN SALTO** 1889-1961

*Vase in the 'budding' style, circa 1955*

Stoneware, Sung glazes.

25.9 cm (10¼ in.) high

Produced by Royal Copenhagen, Denmark. Crown and ROYAL COPENHAGEN DENMARK stamp in green under the glaze with painted blue wave mark, incised in the body 20665 and SALTO.

**Estimate** £10,000-15,000 \$15,600-23,400 €11,600-17,500 ♠

342

**BØRGE MOGENSEN** 1914-1972

*Armchair*, circa 1950

Oak, leather.

81 x 65.2 x 63 cm (31 $\frac{7}{8}$  x 25 $\frac{5}{8}$  x 24 $\frac{3}{4}$  in.)

Produced by cabinetmaker Erhard Rasmussen, Denmark.

**Estimate** £8,000-10,000 \$12,500-15,600 €9,300-11,600 ♠

**LITERATURE**

Esbjørn Hiort, *Modern Danish Furniture*, New York, 1956, pp. 80-81

Arne Karlsen, ed., *Contemporary Danish Design*, Copenhagen, 1960, p. 73

Grete Jalk, ed., *Dansk Møbelkunst gennem 40 aar, Volume 3: 1947-1956*, Copenhagen, 1987, p. 155

Grete Jalk, ed., *Dansk Møbelkunst gennem 40 aar, Volume 4: 1957-1966*, Copenhagen, 1987, p. 351





**KAARE KLINT and EDVARD KINDT-LARSEN**

1888-1954, 1901-1982

*Pair of easy chairs, 1930s*

Nigerien leather, Cuban mahogany, brass.

Each: 78.7 x 65.5 x 64.3 cm (30<sup>7</sup>/<sub>8</sub> x 25<sup>3</sup>/<sub>4</sub> x 25<sup>3</sup>/<sub>8</sub> in.)

Produced by Rud. Rasmussen Snedkerier A/S, Denmark. Underside of each with manufacturer's paper label *RUD. RASMUSSENS SNEDKERIER NØRREBROGADE KØBENHAVN 11438* and architect's monogrammed paper label.

**Estimate** £60,000-80,000 \$93,500-125,000 €69,900-93,200 ♠

**LITERATURE**

*Nyt Tidsskrift For Kunstindustri* (Stockholm), no. 5, May 1943, p. 74, fig. 6

Gorm Harkær, *Kaare Klint: Volume 2*, Copenhagen, 1988, p. 32

Arne Karlsen, *Danish Furniture Design: in the 20th Century, Volume 1*, Copenhagen, 2007, pp. 62-63 for drawing and image





344

**KAARE KLINT** 1888-1954

*Sideboard, model no. 4122*, circa 1930

Cuban mahogany, brass.

95.8 x 156.2 x 62.1 cm (37¾ x 61½ x 24½ in.)

Produced by Rud. Rasmussen Snedkerier A/S, Denmark. Back of cabinet with manufacturer's paper label *RUD. RASMUSSENS SNEDKERIER 45 NØRREBROGADE KØBENHAVN 13149* and architect's monogrammed paper label; key impressed with *RUD. RASMUSSENS SNEDKERIER*.

**Estimate** £12,000-15,000 \$18,700-23,400 €14,000-17,500 ♠

**LITERATURE**

*Nyt Tidsskrift For Kunstindustri* (Stockholm), Vol. III, 1930, p. 175 for a similar example

Erik Lassen, ed. *The Arts of Denmark: Viking to Modern*, exh. cat., The Danish Society of Arts and Crafts and Industrial Design, 1960, p. 120

Grete Jalk, ed., *Dansk Møbelkunst gennem 40 aar, Volume 1: 1927-1936*, Copenhagen, 1987, p. 91

Gorm Harkær, *Kaare Klint: Volume 2*, Copenhagen, 1988, p. 48

Arne Karlsen, *Danish Furniture Design: in the 20th Century, Volume 1*, Copenhagen, 2007, pp. 109-09 for images and drawings

The present model sideboard was exhibited in Stand 25 at the Copenhagen Cabinetmakers' Guild Exhibition at the Teknologisk Instituts Udstillingslokaler, 11 October – 26 October, 1930.







345

**FRITS HENNINGSEN** 1889-1965

*Armchair and ottoman, 1930s*

Mahogany, leather, brass.

Armchair: 96.5 x 75.4 x 92 cm (37 $\frac{7}{8}$  x 29 $\frac{5}{8}$  x 36 $\frac{1}{4}$  in.),

ottoman: 42 x 64.5 x 46.5 cm (16 $\frac{1}{2}$  x 25 $\frac{3}{8}$  x 18 $\frac{1}{4}$  in.)

Produced by cabinetmaker Frits Henningsen, Denmark.

**Estimate** £5,000-7,000 \$7,800-10,900 €5,800-8,200 ♠

**OLE WANSCHER** 1903-1985*Pair of 'T' chairs, circa 1957*

Rosewood, leather.

Each: 78.5 x 49 x 50 cm (30 $\frac{7}{8}$  x 19 $\frac{1}{4}$  x 19 $\frac{5}{8}$  in.)Produced by cabinetmaker A.J. Iversen, Denmark. Underside of each chair with manufacturer's paper label *Snedkermester A.J. Iversen København*.**Estimate** £12,000-15,000 \$18,700-23,400 €14,000-17,500 ♠**LITERATURE**Grete Jalk, ed., *Dansk Møbelkunst gennem 40 aar, Volume 4: 1957-1966*, Copenhagen, 1987, pp. 21, 57, 167, fig. 1Frederik Sieck, *Contemporary Danish Furniture Design - a short illustrated review*, Copenhagen, 1990, p. 217Noritsugu Oda, *Danish Chairs*, San Francisco, 1996, p. 66Bodil Busk Laursen, Søren Matz and Christian Holmsted Olesen, eds., *Mesterværker: 100 års dansk møbelsnedkeri (English summary)*, Copenhagen, 2000, p. 12



Σ 347

### JACOB HERMANN

*Unique sewing cabinet*, 1948

Mahogany, ivory.

59 x 49.8 x 35.1 cm (23¼ x 19½ x 13⅞ in.)

Produced by cabinetmaker Henrik Wörts, Denmark.

Underside with handwritten paper label for the Cabinetmakers' Guild exhibition signed *Jacob Herman* and dated 1948.

**Estimate** £10,000-15,000 \$15,600-23,400 €11,600-17,500 ♠

#### EXHIBITED

'Cabinetmakers' Guild', Kunstindustrimuseet, Copenhagen, Stand 23, 24 September-10 October 1948

'Masterworks', Det danske Kunstindustrimuseum, Kronborg, 2000

#### LITERATURE

Grete Jalk, ed., *Dansk Møbelkunst gennem 40 aar, Volume 3: 1947-1956*, Copenhagen, 1987, illustrated p. 84





348

**VIGGO STEN MØLLER** 1897-1990

*Bench, from the Kunsthallens Kunstauktioner, Copenhagen, 1936*

Rosewood, leather, nickel-plated metal.

43.5 x 150.8 x 60.5 cm (17½ x 59¾ x 23¾ in.)

Produced by cabinetmaker Jacob Kjær, Denmark.

**Estimate** £10,000-15,000 \$15,600-23,400 €11,600-17,500 ♠

**PROVENANCE**

Kunsthallens Kunstauktioner, Copenhagen





349

**POUL HENNINGSEN** 1894-1967

*'Anchor' five-armed chandelier, 3/2 type shades, 1929-1936*

Amber glass, patinated tubular brass, patinated brass.

150 cm (59 in.) drop, 85 cm (33½ in.) diameter

Manufactured by Louis Poulsen, Denmark. Each light fixture impressed with PAT. APPL.

**Estimate** £20,000-25,000 \$31,200-38,900 €23,300-29,100 ♠

**LITERATURE**

*Nyt Tidsskrift For Kunstindustri* (Stockholm), Vol. III, 1930, p. 159 for a three-armed example

Tina Jørstian and Poul Erik Munk Nielsen, eds, *Light Years Ahead, The Story of the PH Lamp*, Copenhagen, 1994, p. 191





350

**KAJ GOTTLOB** 1887-1976

*Set of six wall lights*, circa 1953

Opaque glass, brass.

Each: 23 x 21 x 21 cm (9 x 8¼ x 8¼ in.)

Manufactured by Fog & Mørup, Denmark.

**Estimate** £8,000-12,000 \$12,500-18,700 €9,300-14,000 ♣

**LITERATURE**

*Fog & Mørup*, sales catalogue, Copenhagen, 1952, n.p.

351

**KAJ GOTTLÖB** 1887-1976

*Sofa with two drawers, circa 1920*

Cuban mahogany, fabric.

85.8 x 200 x 67.6 cm (33<sup>3</sup>/<sub>4</sub> x 78<sup>3</sup>/<sub>4</sub> x 26<sup>5</sup>/<sub>8</sub> in.)

Produced by cabinetmakers H. Andersen & Søn, Denmark.

**Estimate** £10,000-15,000 \$15,600-23,400 €11,600-17,500 ♠

**PROVENANCE**

Kaj Gottlob, Copenhagen







352

**POUL HENNINGSEN** 1894-1967

*Pair of standard lamps, 3/2 type shades, circa 1933*

Patinated tubular brass, patinated brass, opaque glass, Bakelite.

Each: 149.5 cm (58 $\frac{7}{8}$  in.) high

Manufactured by Louis Poulsen, Denmark. Bakelite fixtures moulded *PH lamp Patented*, light fixtures impressed *P.H.-2 PATENTED* and underside of base embossed with 4332.

**Estimate** £12,000-15,000 \$18,700-23,400 €14,000-17,500 ♠

#### LITERATURE

*Nyt Tidsskrift For Kunstindustri* (Stockholm), Vol. III, 1930, p. 158

Grete Jalk, *Dansk Møbelkunst gennem 40 aar, Vol. 1 1927-1936*, Copenhagen, 1987, pp. 117, fig. 1, 157, fig. 2, p. 259 for a similar example

Grete Jalk, *Dansk Møbelkunst gennem 40 aar, Vol. 2 1937-1946*, Copenhagen, 1987, p. 11, fig. 2, p. 85, fig. 1 for a similar example

Tina Jørstian and Poul Eric Munk Nielsen, eds., *Light Years Ahead, The Story of the PH Lamp*, Copenhagen, 1994, p. 189 for a similar example



353

**FRITS HENNINGSEN** 1889-1965

*Wingback armchair and footstool, circa 1935*

Oak, leather.

Armchair: 111.2 x 68 x 109 cm (43<sup>3</sup>/<sub>4</sub> x 26<sup>3</sup>/<sub>4</sub> x 42<sup>7</sup>/<sub>8</sub> in.);

footstool: 43 x 61 x 45.5 cm (16<sup>7</sup>/<sub>8</sub> x 24 x 17<sup>7</sup>/<sub>8</sub> in.)

Produced by cabinetmaker Frits Henningsen, Denmark.

**Estimate** £40,000-60,000 \$62,300-93,500 €46,600-69,900 ♣

**LITERATURE**

Bodil Busk Laursen, Søren Matz and Christian Holmsted Olesen, eds.,  
*Mesterværker: 100 års dansk møbelsnedkeri (English summary)*,  
Copenhagen, 2000, p. 39 for the chair



354

**GUTTE ERIKSEN** 1918-2008

*Group of three bottles, 1980s*

Glazed stoneware.

Tallest: 24.9 cm (9¾ in.) high

Two impressed with artist's seal.

**Estimate** £5,000-7,000 \$7,800-10,900 €5,800-8,200 ♠



**OLE WANSCHER** 1903-1985*Pair of cabinets, circa 1954*

Rosewood, rosewood-veneered wood, brass.

Each: 138.5 x 80 x 38 cm (54½ x 31½ x 14⅞ in.)

Produced by cabinetmaker A.J. Iversen, Denmark. Underside of each with manufacturer's paper label *Snedkermester A.J. Iversen København*.**Estimate** £18,000-22,000 \$28,000-34,300 €21,000-25,600 ♠**LITERATURE**Arne Karlsen, ed., *Contemporary Danish Design*, Copenhagen, 1960, p. 14 for a similar exampleGrete Jalk, ed., *Dansk Møbelkunst gennem 40 aar, Volume 4: 1957-1966*, Copenhagen, 1987, p. 167, fig. 1, p. 286, fig. 1, for similar examples



356

**POUL HENNINGSEN** 1894-1967

*Adjustable standard lamp, 3/2 type shades, circa 1931*

Amber glass, patinated tubular brass, patinated brass, Bakelite.

151.8 cm (59¾ in.) high

Manufactured by Louis Poulsen, Denmark. Bakelite fixture moulded *PH lamp Patented*, light fixture impressed *P.H.-2 PATENTED* and underside of base embossed with 4332.

**Estimate** £8,000-10,000 \$12,500-15,600 €9,300-11,600 ♠

#### LITERATURE

Tina Jørstian and Poul Erik Munk Nielsen, eds., *Light Years Ahead: The Story of the PH Lamp*, Copenhagen, 1994, pp. 164, 230

357

**KAARE KLINT** 1888-1954

*'The English chair', 1930s*

Cuban mahogany, ebony, Nigerien leather, cane, brass.

Each: 90.2 x 61.1 x 64 cm (35½ x 24 x 25¼ in.)

Produced by Rud. Rasmussen Snedkerier A/S, Denmark.

**Estimate** £6,000-8,000 \$9,300-12,500 €7,000-9,300 ♠

**LITERATURE**

Grete Jalk, ed., *Dansk Møbelkunst gennem 40 aar, Volume 4: 1957-1966*, Copenhagen, 1987, p. 214, fig. 1

Gorm Harkær, *Kaare Klint: Volume 2*, Copenhagen, 1988, p. 32

Arne Karlsen, *Danish Furniture Design: in the 20th Century, Volume 1*, Copenhagen, 2007, p. 66





358

**OLE WANSCHER** 1903-1985

*Writing desk, circa 1945*

Rosewood-veneered wood, rosewood, leather, brass.

93.8 x 105 x 80.5 cm (36 $\frac{7}{8}$  x 41 $\frac{3}{8}$  x 31 $\frac{1}{8}$  in.)

Produced by cabinetmaker A.J. Iversen, Denmark.

**Estimate** £30,000-40,000 \$46,700-62,300 €34,900-46,600 ♠

**PROVENANCE**

Private collection, UK

Phillips de Pury & Company, London, 'Design', 28 September 2010, lot 38

**LITERATURE**

A.J. *Iversen*, sales catalogue, Copenhagen, 1960s, n.p.

'Special edition', *Mobilia* (Copenhagen), no. 130, May 1966, pp. 18-19

Grete Jalk, ed., *Dansk Møbelkunst gennem 40 aar, Volume 2: 1937-1946*,

Copenhagen, 1987, pp. 296-97 for similar examples

Bodil Busk Laursen, Søren Matz and Christian Holmsted Olesen, eds.,

*Mesterværker: 100 års dansk møbelsnedkeri (English summary)*,

Copenhagen, 2000, p. 144 for a similar example







359

**KAARE KLINT** 1888-1954

*Set of twelve 'Red' dining chairs, model no. 4751, designed for the Danish Museum of Art and Design's lecture room, Copenhagen, circa 1930*

Cuban mahogany, Nigerien leather.

Each: 88 x 57.6 x 52 cm (34 $\frac{5}{8}$  x 22 $\frac{5}{8}$  x 20 $\frac{1}{2}$  in.)

Produced by Rud. Rasmussen Snedkerier A/S, Denmark.

**Estimate** £70,000-100,000 \$109,000-156,000 €81,500-116,000 ♠





#### LITERATURE

*Nyt Tidsskrift For Kunstindustri* (Stockholm), no. 5, May 1943, p. 74, fig. 7  
Grete Jalk, *Dansk Møbelkunst gennem 40 aar, Vol. 1 1927-1936*,  
Copenhagen, 1987, pp. 120-21, 169 for similar examples  
Gorm Harkr, *Kaare Klint: Volume 1*, Copenhagen, 1988, pp. 229, 234, 348,  
400, 469 and Volume 2, p. 30 for similar examples  
Arne Karlsen, *Danish Furniture Design: in the 20th Century, Volume 1*,  
Copenhagen, 2007, front cover pp. 30-31, 42, 69, 93-95 for similar examples



360

**POUL HENNINGSEN** 1894-1967

*Desk lamp, circa 1928*

Painted copper, patinated tubular brass, patinated brass.

53 cm (20<sup>7</sup>/<sub>8</sub> in.) high

Manufactured by Louis Poulsen, Denmark. Light fixture impressed with *PH-4. PATENTED*.

**Estimate** £6,000-9,000 \$9,300-14,000 €7,000-10,500 ♠

**LITERATURE**

Tina Jørstian and Poul Eric Munk Nielsen, eds., *Light Years Ahead, The Story of the PH Lamp*, Copenhagen, 1994, pp. 147-49, 200 for similar examples  
Charlotte and Peter Fiell, eds., *1000 Lights, Vol. 1: 1879 to 1959*, Cologne, 2005, p. 240 for a similar example

Σ 361

**EDVARD and TOVE KINDT-LARSEN** 1901-1982, 1906-1994

*Desk, circa 1958*

Rosewood-veneered wood, rosewood, brass.

74.9 x 159.9 x 79.8 cm (29½ x 62⅞ x 31⅜ in.)

Produced by Thorald Madsen, Denmark.

**Estimate** £6,000-8,000 \$9,300-12,500 €7,000-9,300 ♠







362

**VILHELM LAURITZEN** 1894-1984

*'Radiohuset' ceiling light, designed for the National Broadcasting House, Copenhagen, 1936-1941*

Opaque glass, brass.

Variable drop, 48 x 36 x 36 cm (18 $\frac{7}{8}$  x 14 $\frac{1}{8}$  x 14 $\frac{1}{8}$  in.)

Manufactured by Louis Poulsen, Denmark.

**Estimate** £3,000-5,000 \$4,700-7,800 €3,500-5,800 ♠

#### LITERATURE

*Nyt Tidsskrift For Kunstindustri* (Stockholm), no. 3, March 1943, n.p. for an advertisement

Grete Jalk, ed., *Dansk Møbelkunst gennem 40 aar, Volume 2: 1937-1946*, Copenhagen, 1987, p. 247

Esbjørn Hiort, *Finn Juhl: Furniture, Architecture, Applied Art*, Copenhagen, 1990, pp. 30, 69, 96

Lisbet Balslev Jørgensen, *Vilhelm Lauritzen: En Moderne Arkitekt*, Copenhagen, 1994, pp. 88, 107, 225, 245

363

**POUL KJÆRHOLM** 1929–1980

*Early adjustable chaise longue, model no. PK 24,*  
designed 1965

Cane, polished stainless steel, leather.

85 x 66.5 x 155 cm (33½ x 26⅞ x 61 in.)

Manufactured by E. Kold Christensen, Denmark.

**Estimate** £18,000–20,000 \$28,000–31,200 €21,000–23,300 ♠

**LITERATURE**

Frederik Sieck, *Contemporary Danish Furniture Design: A Short Illustrated Review*, Copenhagen, 1990, p. 148

Noritsugu Oda, *Danish Chairs*, San Francisco, 1996, p. 187

Christoffer Harlang, Keld Helmer-Petersen and Krestine Kjærholm, eds., *Poul Kjærholm*, Copenhagen, 1999, pp. 29, 118–19, 179 for a drawing and images

Michael Sheridan, *The Furniture of Poul Kjærholm: Catalogue Raisonné*, New York, 2007, pp. 142–45





Σ 364

**KAY BOJESEN** 1886-1958

*Punch bowl and ladle, circa 1954*

Precious metal, rosewood.

Punch bowl: 17.7 cm (6⅞ in.) high; ladle: 33.7 cm (13¼ in.) long

Produced by Kay Bojesen, Denmark. Underside of plate with paper label

*KAY BOJESENS SØLVSMEDIE KONGELIG HOFLEVERANDØR*, underside of bowl marked 925S, maker's mark, *DENMARK* and ladle marked 925S, maker's mark, and *KBS*.

**Estimate** £8,000-10,000 \$12,500-15,600 €9,300-11,600 ♠



**FINN JUHL** 1912-1989

*Unique drop-leaf table, designed for the Kokfeldt villa, Hellerup, circa 1955*

Formica, rosewood-veneered wood, tubular metal, metal.

73.4 x 291.6 x 89.9 cm (28<sup>7</sup>/<sub>8</sub> x 114<sup>3</sup>/<sub>4</sub> x 35<sup>3</sup>/<sub>8</sub> in.) fully extended

Produced by cabinetmaker Niels Vodder, Denmark.

**Estimate** £25,000-35,000 \$38,900-54,500 €29,100-40,800 ♠

**PROVENANCE**

Kokfeldt villa, Hellerup, Denmark

Thence by descent

**LITERATURE**

Esbjørn Hiort, *Finn Juhl: Furniture, Architecture, Applied Art*, Copenhagen, 1990, pp. 60-61 for similar examples



366

**PREBEN FABRICIUS and JØRGEN KASTHOLM**

1931-1984, 1931-2007

*Early 'Grasshopper' chaise longue*, designed 1968

Leather, canvas, stainless steel.

82 x 73 x 140 cm (32¼ x 28¾ x 55⅞ in.)

Manufactured by Alfred Kill, Denmark.

**Estimate** £15,000-20,000 \$23,400-31,200 €17,500-23,300 ♠

**LITERATURE**

*Dansk Møbelkunst: The Anniversary Selection*, Copenhagen 2012, p. 79 for a similar example









## INDEX

- Aalto, A. 202, 205, 211, 212, 214, 216, 220, 221, 222, 225, 229, 231, 233, 234  
Andersen, K. 306  
Andersen, G. A. 314  
Asplund, E. G. 275
- Bensow, F. 270  
Bojesen, K. 364
- Eriksen, G. 304, 354
- Fabricius, P. 334, 366  
Fougstedt, N. 263, 264, 272  
Franck, K. 256  
Frank, J. 261, 268, 269, 274, 277, 278, 279
- Gottlob, K. 350, 351
- Halier, C. 306  
Hansen, F. 320  
Henningsen, F. 345, 353  
Henningsen, P. 299, 302, 307, 337, 349, 352, 356, 360  
Hermann, J. 347  
Hjorth, A. E. 258, 264, 267, 273, 276
- Ilvessalo, K. 208
- Jacobsen, A. 300, 315  
Johansson-Pape, L. 223  
Juhl, F. 301, 303, 312, 321, 322, 335, 365
- Kåge, W. 257, 282, 283, 284, 285, 286, 287, 288, 289, 290, 291, 292  
Kaipainen, B. 209, 210  
Kastholm, J. 334, 366  
Kauppi, E. 253  
Kindt-Larsen, E. 336, 343, 361  
Kindt-Larsen, T. 336, 361  
Kjærholm, P. 363  
Klint, K. 338, 343, 344, 357, 359  
Koppel, H. 317
- Lassen, F. 308  
Lauritzen, V. 316, 323, 362  
Lindbom, A-M. 266  
Lönegren, G. 295
- Magnusson-Grossman, G. 293  
Malmsten, C. 297  
Mathsson, B. 280, 281, 294  
Mogensen, B. 342  
Møller, V. S. 348  
Moos, P. 313  
Muona, T. 204, 242
- Nilsson, O. 260  
Nilsson, B. 259, 262, 271  
Nyman, G. 237
- Pontoppidan, L. 324
- Roed, J. 305
- Salto, A. J. 311, 318, 319, 326, 329, 330, 331, 332, 333, 340, 341  
Sarpaneva, T. 207, 227, 235, 239, 254  
Simonsson, K. 206, 226  
Sotavalta, I. 217  
Stålhane, C-H. 265
- Tapiovaara, I. 224, 230  
Theselius, M. 296  
Toikka, O. 255  
Trägårdh, B. 263  
Tynell, P. 201, 213, 215, 218, 219, 236, 243, 247
- Wanscher, O. 339, 346, 355, 358  
Weckström, B. 249, 251  
Wegner, H. J. 298, 309, 310, 325, 327, 328  
Wirkkala, T. 203, 228, 232, 238, 240, 241, 244, 245, 246, 248, 250, 252

# GUIDE FOR PROSPECTIVE BUYERS

## BUYING AT AUCTION

The following pages are designed to offer you information on how to buy at auction at Phillips. Our staff will be happy to assist you.

## CONDITIONS OF SALE

The Conditions of Sale and Authorship Warranty which appear later in this catalogue govern the auction. Bidders are strongly encouraged to read them as they outline the legal relationship among Phillips, the seller and the buyer and describe the terms upon which property is bought at auction. Please be advised that Phillips generally acts as agent for the seller.

## BUYER'S PREMIUM

Phillips charges the successful bidder a commission, or buyer's premium, on the hammer price of each lot sold. The buyer's premium is payable by the buyer as part of the total purchase price at the following rates: 25% of the hammer price up to and including £50,000, 20% of the portion of the hammer price above £50,000 up to and including £1,000,000 and 12% of the portion of the hammer price above £1,000,000.

## VAT

Value added tax (VAT) may be payable on the hammer price and/or the buyer's premium. The buyer's premium may attract a charge in lieu of VAT. Please read carefully the VAT AND OTHER TAX INFORMATION FOR BUYERS section in this catalogue.

## 1 PRIOR TO AUCTION

### Catalogue Subscriptions

If you would like to purchase a catalogue for this auction or any other Phillips sale, please contact us at +44 20 7318 4010 or +1 212 940 1240.

### Pre-Sale Estimates

Pre-sale estimates are intended as a guide for prospective buyers. Any bid within the high and low estimate range should, in our opinion, offer a chance of success. However, many lots achieve prices below or above the pre-sale estimates. Where 'Estimate on Request' appears, please contact the specialist department for further information. It is advisable to contact us closer to the time of the auction as estimates can be subject to revision. Pre-sale estimates do not include the buyer's premium or VAT.

### Pre-Sale Estimates in US Dollars and Euros

Although the sale is conducted in pounds sterling, the pre-sale estimates in the auction catalogues may also be printed in US dollars and/or euros. Since the exchange rate is that at the time of catalogue production and not at the date of auction, you should treat estimates in US dollars or euros as a guide only.

### Catalogue Entries

Phillips may print in the catalogue entry the history of ownership of a work of art, as well as the exhibition history of the property and references to the work in art publications. While we are careful in the cataloguing process, provenance, exhibition and literature references may not be exhaustive and in some cases we may intentionally refrain from disclosing the identity of previous owners. Please note that all dimensions of the property set forth in the catalogue entry are approximate.

### Condition of Lots

Our catalogues include references to condition only in the descriptions of multiple works (e.g., prints). Such references, though, do not amount to a full description of condition. The absence of reference to the condition of a lot in the catalogue entry does not imply that the lot is free from faults or imperfections. Solely as a convenience to clients, Phillips may provide condition reports. In preparing such reports, our specialists assess the condition in a manner appropriate to the estimated value of the property and the nature of the auction in which it is included. While condition reports are prepared honestly and carefully, our staff are not professional restorers or trained conservators. We therefore encourage all prospective buyers to inspect the property at the pre-sale exhibitions and recommend, particularly in the case of any lot of significant value, that you retain your own restorer or professional advisor to report to you on the property's condition prior to bidding. Any prospective buyer of photographs or prints should always request a condition report because all such property is sold unframed, unless otherwise indicated in the condition report. If a lot is sold framed, Phillips accepts no liability for the condition of the frame. If we sell any lot unframed, we will be pleased to refer the purchaser to a professional framer.

### Pre-Auction Viewing

Pre-auction viewings are open to the public and free of charge. Our specialists are available to give advice and condition reports at viewings or by appointment.

### Electrical and Mechanical Lots

All lots with electrical and/or mechanical features are sold on the basis of their decorative value only and should not be assumed to be operative. It is essential that, prior to any intended use, the electrical system is verified and approved by a qualified electrician.

## Symbol Key

The following key explains the symbols you may see inside this catalogue.

### ○ Guaranteed Property

The seller of lots with this symbol has been guaranteed a minimum price. The guarantee may be provided by Phillips, by a third party or jointly by us and a third party. Phillips and third parties providing or participating in a guarantee may benefit financially if a guaranteed lot is sold successfully and may incur a loss if the sale is not successful. A third party guarantor may also bid for the guaranteed lot and may be allowed to net the financial remuneration received in connection with the guarantee against the final purchase price if such party is the successful bidder.

### △ Property in which Phillips has an Ownership Interest

Lots with this symbol indicate that Phillips owns the lot in whole or in part or has an economic interest in the lot equivalent to an ownership interest.

### ● No Reserve

Unless indicated by a ●, all lots in this catalogue are offered subject to a reserve. A reserve is the confidential value established between Phillips and the seller and below which a lot may not be sold. The reserve for each lot is generally set at a percentage of the low estimate and will not exceed the low pre-sale estimate.

### ♠ Property Subject to the Artist's Resale Right

Lots marked with ♠ are subject to the Artist's Resale Right calculated as a percentage of the hammer price and payable as part of the purchase price as follows:

Portion of the Hammer Price (in EUR)	Royalty Rate
From 0 to 50,000	4%
From 50,000.01 to 200,000	3%
From 200,000.01 to 350,000	1%
From 350,000.01 to 500,000	0.5%
Exceeding 500,000	0.25%

The Artist's Resale Right applies where the hammer price is EUR 1,000 or more, subject to a maximum royalty per lot of EUR 12,500. Calculation of the Artist's Resale Right will be based on the pounds sterling/euro reference exchange rate quoted on the date of the sale by the European Central Bank.

### Σ Endangered Species

Lots with this symbol have been identified at the time of cataloguing as containing endangered or other protected species of wildlife which may be subject to restrictions regarding export or import and which may require permits for export as well as import. Please refer to Paragraph 4 of the Guide for Prospective Buyers and Paragraph 11 of the Conditions of Sale.

### †, \$, ₣, or Ω Property Subject to VAT

Please refer to the section entitled 'VAT AND OTHER TAX INFORMATION FOR BUYERS' in this catalogue for additional information.

## 2 BIDDING IN THE SALE

### Bidding at Auction

Bids may be executed during the auction in person by paddle or by telephone or prior to the sale in writing by absentee bid. **Proof of identity in the form of government-issued identification will be required, as will an original signature.** We may also require that you furnish us with a bank reference.

### Bidding in Person

To bid in person, you will need to register for and collect a paddle before the auction begins. New clients are encouraged to register at least 48 hours in advance of a sale to allow sufficient time for us to process your information. All lots sold will be invoiced to the name and address to which the paddle has been registered and invoices cannot be transferred to other names and addresses. Please do not misplace your paddle. In the event you lose it, inform a Phillips staff member immediately. At the end of the auction, please return your paddle to the registration desk.

### Bidding by Telephone

If you cannot attend the auction, you may bid live on the telephone with one of our multilingual staff members. This service must be arranged at least 24 hours in advance of the sale and is available for lots whose low pre-sale estimate is at least £500. Telephone bids may be recorded. By bidding on the telephone, you consent to the recording of your conversation. We suggest that you leave a maximum bid, excluding the buyer's premium and VAT, which we can execute on your behalf in the event we are unable to reach you by telephone.



# PHILLIPS



## DESIGN MASTERS

AUCTION 17 DECEMBER 2013 NEW YORK

ENQUIRIES +1 212 940 1268 [designnewyork@phillips.com](mailto:designnewyork@phillips.com)

HARRY BERTOIA *"Golden Rods"* melt-coated wire sculpture, circa 1959

[PHILLIPS.COM](http://PHILLIPS.COM)



### Absentee Bids

If you are unable to attend the auction and cannot participate by telephone, Phillips will be happy to execute written bids on your behalf. A bidding form can be found at the back of this catalogue. This service is free and confidential. Bids must be placed in the currency of the sale. Our staff will attempt to execute an absentee bid at the lowest possible price taking into account the reserve and other bidders. Always indicate a maximum bid, excluding the buyer's premium and VAT. Unlimited bids will not be accepted. Any absentee bid must be received at least 24 hours in advance of the sale. In the event of identical bids, the earliest bid received will take precedence..

### Employee Bidding

Employees of Phillips and our affiliated companies, including the auctioneer, may bid at the auction by placing absentee bids so long as they do not know the reserve when submitting their absentee bids and otherwise comply with our employee bidding procedures.

### Bidding Increments

Bidding generally opens below the low estimate and advances in increments of up to 10%, subject to the auctioneer's discretion. Absentee bids that do not conform to the increments set below may be lowered to the next bidding increment.

UK£50 to UK£1,000	by UK£50s
UK£1,000 to UK£2,000	by UK£100s
UK£2,000 to UK£3,000	by UK£200s
UK£3,000 to UK£5,000	by UK£200s, 500, 800 (e.g. UK£4,200, 4,500, 4,800)
UK£5,000 to UK£10,000	by UK£500s
UK£10,000 to UK£20,000	by UK£1,000s
UK£20,000 to UK£30,000	by UK£2,000s
UK£30,000 to UK£50,000	by UK£2,000s, 5,000, 8,000
UK£50,000 to UK£100,000	by UK£5,000s
UK£100,000 to UK£200,000	by UK£10,000s
above UK£200,000	at the auctioneer's discretion

The auctioneer may vary the increments during the course of the auction at his or her own discretion.

## 3 THE AUCTION

### Conditions of Sale

As noted above, the auction is governed by the Conditions of Sale and Authorship Warranty. All prospective bidders should read them carefully. They may be amended by saleroom addendum or auctioneer's announcement.

### Interested Parties Announcement

In situations where a person allowed to bid on a lot has a direct or indirect interest in such lot, such as the beneficiary or executor of an estate selling the lot, a joint owner of the lot or a party providing or participating in a guarantee on the lot, Phillips will make an announcement in the saleroom that interested parties may bid on the lot.

### Consecutive and Responsive Bidding; No Reserve Lots

The auctioneer may open the bidding on any lot by placing a bid on behalf of the seller. The auctioneer may further bid on behalf of the seller up to the amount of the reserve by placing consecutive bids or bids in response to other bidders. If a lot is offered without reserve, unless there are already competing absentee bids, the auctioneer will generally open the bidding at 50% of the lot's low pre-sale estimate. In the absence of a bid at that level, the auctioneer will proceed backwards at his or her discretion until a bid is recognized and will then advance the bidding from that amount. Absentee bids on no reserve lots will, in the absence of a higher bid, be executed at approximately 50% of the low pre-sale estimate or at the amount of the bid if it is less than 50% of the low pre-sale estimate. If there is no bid whatsoever on a no reserve lot, the auctioneer may deem such lot unsold.

## 4 AFTER THE AUCTION

### Payment

Buyers are required to pay for purchases immediately following the auction unless other arrangements have been agreed with Phillips in writing in advance of the sale. Payment must be made in pounds sterling either by cash, cheque drawn on a UK bank or wire transfer, as noted in Paragraph 6 of the Conditions of Sale. It is our corporate policy not to make or accept single or multiple payments in cash or cash equivalents in excess of the local currency equivalent of US\$10,000.

### Credit Cards

As a courtesy to clients, Phillips will accept American Express, Visa, MasterCard and UK-issued debit cards to pay for invoices of £50,000 or less. A processing fee will apply.

### Collection

It is our policy to request proof of identity on collection of a lot. A lot will be released to the buyer or the buyer's authorized representative when Phillips has received full and cleared payment and we are not owed any other amount by the buyer. After the auction, we will transfer all lots to our fine art storage facility located near Wimbledon and will so advise all buyers. If you are in doubt about the location of your purchase, please contact the Shipping Department prior to arranging collection. We will levy removal, interest, storage and handling charges on uncollected lots.

### Loss or Damage

Buyers are reminded that Phillips accepts liability for loss or damage to lots for a maximum of seven days following the auction.

### Transport and Shipping

As a free service for buyers, Phillips will wrap purchased lots for hand carry only. We do not provide packing, handling or shipping services directly. However, we will coordinate with shipping agents instructed by you in order to facilitate the packing, handling and shipping of property purchased at Phillips. Please refer to Paragraph 7 of the Conditions of Sale for more information.

### Export and Import Licences

Before bidding for any property, prospective bidders are advised to make independent enquiries as to whether a licence is required to export the property from the United Kingdom or to import it into another country. It is the buyer's sole responsibility to comply with all import and export laws and to obtain any necessary licences or permits. The denial of any required licence or permit or any delay in obtaining such documentation will not justify the cancellation of the sale or any delay in making full payment for the lot.

### Endangered Species

Items made of or incorporating plant or animal material, such as coral, crocodile, ivory, whalebone, rhinoceros horn or tortoiseshell, irrespective of age, percentage or value, may require a licence or certificate prior to exportation and additional licences or certificates upon importation to any country outside the European Union (EU). Please note that the ability to obtain an export licence or certificate does not ensure the ability to obtain an import licence or certificate in another country, and vice versa. We suggest that prospective bidders check with their own government regarding wildlife import requirements prior to placing a bid. It is the buyer's sole responsibility to obtain any necessary export or import licences or certificates as well as any other required documentation. The denial of any required licence or certificate or any delay in obtaining such documentation will not justify the cancellation of the sale or any delay in making full payment for the lot. Please note that lots containing potentially regulated plant or animal material are marked as a convenience to our clients, but Phillips does not accept liability for errors or for failing to mark lots containing protected or regulated species.

## IMPORTANT NOTICES

### Items Sold under Temporary Admission

We wish to draw your attention to changes recently made to items sold under temporary admission (originally called temporary importation). The cancelling or refunding of applicable VAT is now subject to items being exported from the EU within 30 days of payment, rather than 90 days from the date of sale as previously required. For up-to-date information on this matter, please refer to the section entitled **VAT and Other Tax Information for Buyers** below.

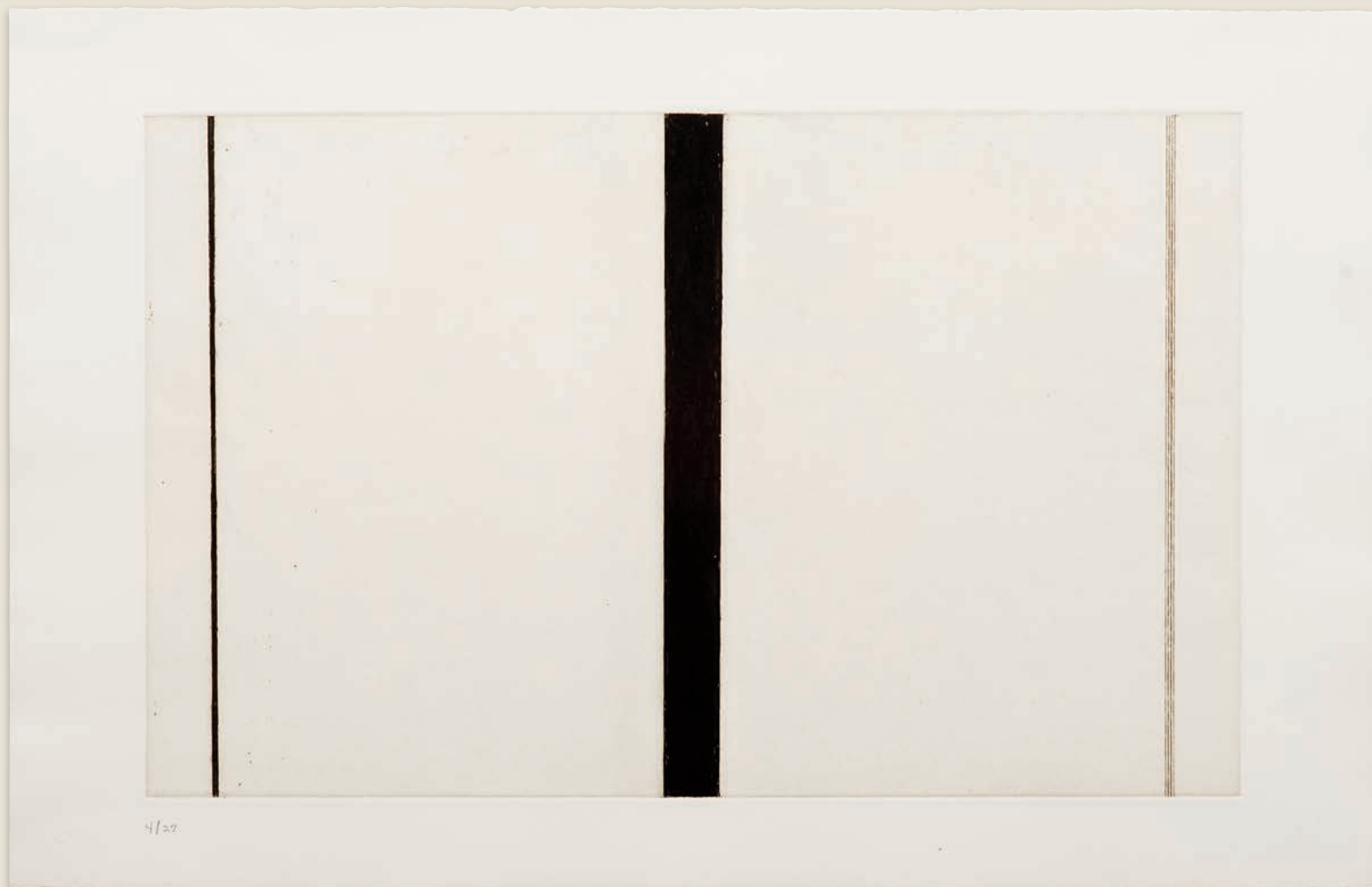
### Identification of Business or Trade Buyers

As of January 2010, Her Majesty's Revenue & Customs ("HMRC") has made it an official requirement for auction houses to hold evidence of a buyer's business status, due to the revised VAT rules regarding buyer's premium for lots with symbols for businesses outside the UK.

- Where the buyer is a non-EU business, Phillips requires evidence of the business status by means of the company identification, Certificate of Incorporation, Articles of Association or government-issued documents showing that the company exists.
- Where the buyer is an EU VAT registered business, Phillips requires the above as well as the business's VAT registration number in the form of a government-issued document or paperwork from the local EU tax/VAT office showing the VAT number.

These details can be scanned and emailed to us, or alternatively they can be faxed or mailed. **If these requirements are not met, we will be unable to cancel/refund any applicable VAT.**

# PHILLIPS



## EDITIONS

EVENING AND DAY AUCTIONS 28 OCTOBER 2013 NEW YORK

ENQUIRIES

**KELLY TROESTER** MODERN EDITIONS

+1 212 940 1221 [ktroester@phillips.com](mailto:ktroester@phillips.com)

**CARY LEIBOWITZ** CONTEMPORARY EDITIONS

+1 212 940 1222 [cleibowitz@phillips.com](mailto:cleibowitz@phillips.com)

**BARNETT NEWMAN** *Untitled Etching I*, 1968

Estimate \$50,000 - 70,000

PHILLIPS.COM



## VAT AND OTHER TAX INFORMATION FOR BUYERS

The following paragraphs provide general information to buyers on the VAT and certain other potential tax implications of purchasing property at Phillips. This information is not intended to be complete. In all cases, the relevant tax legislation takes precedence, and the VAT rates in effect on the day of the auction will be the rates charged. It should be noted that, for VAT purposes only, Phillips is not usually treated as agent and most property is sold as if it is the property of Phillips. In the following paragraphs, reference to VAT symbols shall mean those symbols located beside the lot number or the pre-sale estimates in the catalogue (or amending saleroom addendum).

### 1 PROPERTY WITH NO VAT SYMBOL

Where there is no VAT symbol, Phillips is able to use the Auctioneer's Margin Scheme, and VAT will not normally be charged on the hammer price. Phillips must bear VAT on the buyer's premium. Therefore, we will charge an amount in lieu of VAT at 20% on the buyer's premium. This amount will form part of the buyer's premium on our invoice and will not be separately identified.

### 2 PROPERTY WITH A † SYMBOL

These lots will be sold under the normal UK VAT rules, and VAT will be charged at 20% on both the hammer price and buyer's premium. Where the buyer is a relevant business person in the EU (non-UK) or is a relevant business person in a non-EU country then no VAT will be charged on the buyer's premium. This is subject to Phillips being provided with evidence of the buyer's VAT registration number in the relevant Member State (non-UK) or the buyer's business status in a non-EU country such as the buyer's Tax Registration Certificate. Should this evidence not be provided then VAT will be charged on the buyer's premium.

### 3 PROPERTY WITH A \$ SYMBOL

Lots sold to buyers whose registered address is in the EU will be assumed to be remaining in the EU. The property will be invoiced as if it had no VAT symbol. However, if an EU buyer advises us that the property is to be exported from the EU, Phillips will re-invoice the property under the normal VAT rules. Lots sold to buyers whose address is outside the EU will be assumed to be exported from the EU. The property will be invoiced under the normal VAT rules. Although the hammer price will be subject to VAT, the VAT will be cancelled or refunded upon export. The buyer's premium will always bear VAT unless the buyer is a relevant business person in the EU (non-UK) or is a relevant business person in a non-EU country, subject to Phillips receiving evidence of the buyer's VAT registration number in the relevant Member State (non-UK) or the buyer's business status in a non-EU country such as the buyer's Tax Registration Certificate. Should this evidence not be provided VAT will be charged on the buyer's premium.

### 4 PROPERTY SOLD WITH A ‡ OR Ω SYMBOL

These lots have been imported from outside the EU to be sold at auction under temporary admission. Property subject to temporary admission will be offered under the Auctioneer's Margin Scheme and will be subject to import VAT of either 5% or 20%, marked by ‡ and Ω respectively, on the hammer price and an amount in lieu of VAT at 20% on the buyer's premium. Anyone who wishes to buy outside the Auctioneer's Margin Scheme should notify the Client Accounting Department before the sale.

Where lots are sold outside the Auctioneer's Margin Scheme and the buyer is a relevant business person in the EU (non-UK) or is a relevant business person in a non-EU country then no VAT will be charged on the buyer's premium. This is subject to Phillips receiving evidence of the buyer's VAT registration number in the relevant Member State (non-UK) or the buyer's business status in a non-EU country such as the buyer's Tax Registration Certificate. Should this evidence not be provided VAT will be charged on the buyer's premium.

### 5 EXPORTS FROM THE EUROPEAN UNION

The following types of VAT may be cancelled or refunded by Phillips on exports made within three months of the sale date if strict conditions are met:

- The amount in lieu of VAT charged on the buyer's premium for property sold under the Auctioneer's Margin Scheme (i.e., without a VAT symbol).
- The VAT on the hammer price for property sold under the normal VAT rules (i.e., with a † or a \$ symbol).

**The following type of VAT may be cancelled or refunded by Phillips on exports made within 30 days of payment date if strict conditions are met:**

- The import VAT charged on the hammer price and an amount in lieu of VAT on the buyer's premium for property sold under temporary admission (i.e., with a ‡ or a Ω symbol) under the Auctioneer's Margin Scheme.

In each of the above examples, where the appropriate conditions are satisfied, no VAT will be charged if, at or before the time of invoicing, the buyer instructs Phillips to export the property from the EU. If such instruction is received after payment, a refund of the VAT amount will be made.

Where the buyer carries purchases from the EU personally or uses the services of a third party, Phillips will charge the VAT amount due as a deposit and refund it **if the lot has been exported within the timelines specified below** and either of the following conditions are met:

- For lots sold under the Auctioneer's Margin Scheme or the normal VAT rules, Phillips is provided with appropriate documentary proof of export from the EU within three months of the date of sale. Buyers carrying their own property should obtain hand-carry papers from the Shipping Department to facilitate this process.
- For lots sold under temporary admission, Phillips is provided with a copy of the correct paperwork duly completed and stamped by HMRC which shows the property has been exported from the EU via the UK within 30 days of payment date. It is essential for shippers acting on behalf of buyers to collect copies of original import papers from our Shipping Department. HMRC insist that the correct customs procedures are followed and Phillips will not be able to issue any refunds where the export documents do not exactly comply with governmental regulations. Property subject to temporary admission must be transferred to another customs procedure immediately if any restoration or repair work is to be carried out.

Buyers carrying their own property must obtain hand-carry papers from the Shipping Department, for which a charge of £20 will be made. The VAT refund will be processed once the appropriate paperwork has been returned to Phillips. Phillips is not able to cancel or refund any VAT charged on sales made to UK or EU private residents unless the lot is subject to temporary admission and the property is exported from the EU **within 30 days of payment date**. Any refund of VAT is subject to a minimum of £50 per shipment and a processing charge of £20.

Buyers intending to export, repair, restore or alter lots under temporary admission should notify the Shipping Department before collection. Failure to do so may result in the import VAT becoming payable immediately and Phillips being unable to refund the VAT charged on deposit.

### 6 VAT REFUNDS FROM HM REVENUE & CUSTOMS

Where VAT charged cannot be cancelled or refunded by Phillips, it may be possible to seek repayment from HMRC. Repayments in this manner are limited to businesses located outside the UK and may be considered for example for Import VAT charged on the hammer price for lots sold under temporary admission.

All claims made by customers located in another member state to the UK will need to be made under a new mechanism from 1 January 2010. The process prior to 1 January 2010 is no longer in operation.

If you are located in an EU member state other than the UK you will now need to apply for a refund of UK VAT directly to your local tax authority. This is done via submission of an electronically based claim form which should be accessed through the website of your local tax authority. As a result, your form may include VAT incurred in a number of member states. Furthermore, from 1 January 2010 you should only submit one form per year, rather than submitting forms throughout the year.

Please note that the time limits by which you must make a claim have been extended. When making a claim for VAT incurred in another EU member state any claim will still be made on a **calendar year basis** but must now be made no later than **30 September** following that calendar year. This effectively extends the time by which claims should be made by three months (e.g., for VAT incurred in the year 1 January to 31 December 2010 you should make a claim to your local tax authority no later than 30 September 2011). Once you have submitted the electronic form to your local tax authority it is their responsibility to ensure that payment is obtained from the relevant member states. This should be completed within four months. If this time limit is not adhered to you may receive interest on the unpaid amounts.

If you are located outside the EU you should apply for a refund of UK VAT directly to HMRC (the rules for those located outside of the EU have not changed). Claim forms are only available from the HMRC website. Go to [hmrc.gov.uk](http://hmrc.gov.uk), select Forms under Quick Links and then Find a Form. The relevant form is VAT65A. Completed forms should be returned to: HM Revenue & Customs, VAT Overseas Repayments, 8th/13th Directive, PO Box 34, Foyle House, Duncreggan Road, Londonderry BT48 7AE, Northern Ireland, (tel) +44 (0)2871 305100 (fax) +44 (0)2871 305101, [email enq.oru.ni@hmrc.gsi.gov.uk](mailto:enq.oru.ni@hmrc.gsi.gov.uk).

You should submit claims for VAT to HMRC no later than **six months** from the end of the 12 month period ending **30 June** (e.g., claims for the period 1 July 2011 to 30 June 2012 should be made no later than 31 December 2012).

Please note that refunds of VAT will only be made where VAT has been incurred for a business purpose. Any VAT incurred on articles bought for personal use will not be refunded.

### 7 SALES AND USE TAXES

Buyers from outside the UK should note that local sales taxes or use taxes may become payable upon import of lots following purchase. Buyers should consult their own tax advisors.

## CONDITIONS OF SALE

The Conditions of Sale and Authorship Warranty set forth below govern the relationship between bidders and buyers, on the one hand, and Phillips and sellers, on the other hand. All prospective buyers should read these Conditions of Sale and Authorship Warranty carefully before bidding.

### 1 INTRODUCTION

Each lot in this catalogue is offered for sale and sold subject to: (a) the Conditions of Sale and Authorship Warranty; (b) additional notices and terms printed in other places in this catalogue, including the Guide for Prospective Buyers, and (c) supplements to this catalogue or other written material posted by Phillips in the saleroom, in each case as amended by any addendum or announcement by the auctioneer prior to the auction. By bidding at the auction, whether in person, through an agent, by written bid, by telephone bid or other means, bidders and buyers agree to be bound by these Conditions of Sale, as so changed or supplemented, and Authorship Warranty. These Conditions of Sale, as so changed or supplemented, and Authorship Warranty contain all the terms on which Phillips and the seller contract with the buyer.

### 2 PHILLIPS AS AGENT

Phillips acts as an agent for the seller, unless otherwise indicated in this catalogue or at the time of auction. On occasion, Phillips may own a lot directly, in which case we will act in a principal capacity as a consignor, or a company affiliated with Phillips may own a lot, in which case we will act as agent for that company, or Phillips or an affiliated company may have a legal, beneficial or financial interest in a lot as a secured creditor or otherwise.

### 3 CATALOGUE DESCRIPTIONS AND CONDITION OF PROPERTY

Lots are sold subject to the Authorship Warranty, as described in the catalogue (unless such description is changed or supplemented, as provided in Paragraph 1 above) and in the condition that they are in at the time of the sale on the following basis.

(a) The knowledge of Phillips in relation to each lot is partially dependent on information provided to us by the seller, and Phillips is not able to and does not carry out exhaustive due diligence on each lot. Prospective buyers acknowledge this fact and accept responsibility for carrying out inspections and investigations to satisfy themselves as to the lots in which they may be interested. Notwithstanding the foregoing, we shall exercise such reasonable care when making express statements in catalogue descriptions or condition reports as is consistent with our role as auctioneer of lots in this sale and in light of (i) the information provided to us by the seller, (ii) scholarship and technical knowledge and (iii) the generally accepted opinions of relevant experts, in each case at the time any such express statement is made.

(b) Each lot offered for sale at Phillips is available for inspection by prospective buyers prior to the auction. Phillips accepts bids on lots on the basis that bidders (and independent experts on their behalf, to the extent appropriate given the nature and value of the lot and the bidder's own expertise) have fully inspected the lot prior to bidding and have satisfied themselves as to both the condition of the lot and the accuracy of its description.

(c) Prospective buyers acknowledge that many lots are of an age and type which means that they are not in perfect condition. As a courtesy to clients, Phillips may prepare and provide condition reports to assist prospective buyers when they are inspecting lots. Catalogue descriptions and condition reports may make reference to particular imperfections of a lot, but bidders should note that lots may have other faults not expressly referred to in the catalogue or condition report. All dimensions are approximate. Illustrations are for identification purposes only and cannot be used as precise indications of size or to convey full information as to the actual condition of lots.

(d) Information provided to prospective buyers in respect of any lot, including any pre-sale estimate, whether written or oral, and information in any catalogue, condition or other report, commentary or valuation, is not a representation of fact but rather a statement of opinion held by Phillips. Any pre-sale estimate may not be relied on as a prediction of the selling price or value of the lot and may be revised from time to time by Phillips at our absolute discretion. Neither Phillips nor any of our affiliated companies shall be liable for any difference between the pre-sale estimates for any lot and the actual price achieved at auction or upon resale.

### 4 BIDDING AT AUCTION

(a) Phillips has absolute discretion to refuse admission to the auction or participation in the sale. All bidders must register for a paddle prior to bidding, supplying such information and references as required by Phillips.

(b) As a convenience to bidders who cannot attend the auction in person, Phillips may, if so instructed by the bidder, execute written absentee bids on a bidder's behalf. Absentee bidders are required to submit bids on the 'Absentee Bid Form', a copy of which is printed in this catalogue or otherwise available from Phillips. Bids must be placed in the currency of the sale. The bidder must clearly indicate the maximum amount he or she intends to bid, excluding the buyer's premium and value added tax (VAT). The auctioneer will not accept an instruction to execute an absentee bid which does not indicate such maximum bid. Our staff will attempt to execute an absentee bid at the lowest possible price taking into account the reserve and other bidders. Any absentee bid must be received at least 24 hours in advance of the sale. In the event of identical bids, the earliest bid received will take precedence.

(c) Telephone bidders are required to submit bids on the 'Telephone Bid Form', a copy of which is printed in this catalogue or otherwise available from Phillips. Telephone bidding is available for lots whose low pre-sale estimate is at least £500. Phillips reserves the right to require written confirmation of a successful bid from a telephone bidder by fax or otherwise immediately after such bid is accepted by the auctioneer. Telephone bids may be recorded and, by bidding on the telephone, a bidder consents to the recording of the conversation.

(d) When making a bid, whether in person, by absentee bid or on the telephone, a bidder accepts personal liability to pay the purchase price, as described more fully in Paragraph 6 (a) below, plus all other applicable charges unless it has been explicitly agreed in writing with Phillips before the commencement of the auction that the bidder is acting as agent on behalf of an identified third party acceptable to Phillips and that we will only look to the principal for such payment.

(e) By participating in the auction, whether in person, by absentee bid or on the telephone, each prospective buyer represents and warrants that any bids placed by such person, or on such person's behalf, are not the product of any collusive or other anti-competitive agreement and are otherwise consistent with federal and state antitrust law.

(f) Arranging absentee and telephone bids is a free service provided by Phillips to prospective buyers. While we undertake to exercise reasonable care in undertaking such activity, we cannot accept liability for failure to execute such bids except where such failure is caused by our willful misconduct.

(g) Employees of Phillips and our affiliated companies, including the auctioneer, may bid at the auction by placing absentee bids so long as they do not know the reserve when submitting their absentee bids and otherwise comply with our employee bidding procedures.

### 5 CONDUCT OF THE AUCTION

(a) Unless otherwise indicated by the symbol •, each lot is offered subject to a reserve, which is the confidential minimum selling price agreed by Phillips with the seller. The reserve will not exceed the low pre-sale estimate at the time of the auction.

(b) The auctioneer has discretion at any time to refuse any bid, withdraw any lot, re-offer a lot for sale (including after the fall of the hammer) if he or she believes there may be error or dispute and take such other action as he or she deems reasonably appropriate. Phillips shall have no liability whatsoever for any such action taken by the auctioneer. If any dispute arises after the sale, our sale record is conclusive. The auctioneer may accept bids made by a company affiliated with Phillips provided that the bidder does not know the reserve placed on the lot.

(c) The auctioneer will commence and advance the bidding at levels and in increments he or she considers appropriate. In order to protect the reserve on any lot, the auctioneer may place one or more bids on behalf of the seller up to the reserve without indicating he or she is doing so, either by placing consecutive bids or bids in response to other bidders. If a lot is offered without reserve, unless there are already competing absentee bids, the auctioneer will generally open the bidding at 50% of the lot's low pre-sale estimate. In the absence of a bid at that level, the auctioneer will proceed backwards at his or her discretion until a bid is recognized and will then advance the bidding from that amount. Absentee bids on no reserve lots will, in the absence of a higher bid, be executed at approximately 50% of the low pre-sale estimate or at the amount of the bid if it is less than 50% of the low pre-sale estimate. If there is no bid whatsoever on a no reserve lot, the auctioneer may deem such lot unsold.

(d) The sale will be conducted in pounds sterling and payment is due in pounds sterling. For the benefit of international clients, pre-sale estimates in the auction catalogue may be shown in US dollars and/or euros and, if so, will reflect approximate exchange rates. Accordingly, estimates in US dollars or euros should be treated only as a guide.

(e) Subject to the auctioneer's reasonable discretion, the highest bidder accepted by the auctioneer will be the buyer and the striking of the hammer marks the acceptance of the highest bid and the conclusion of a contract for sale between the seller and the buyer. Risk and responsibility for the lot passes to the buyer as set forth in Paragraph 7 below.

(f) If a lot is not sold, the auctioneer will announce that it has been 'passed', 'withdrawn', 'returned to owner' or 'bought-in'.

(g) Any post-auction sale of lots offered at auction shall incorporate these Conditions of Sale and Authorship Warranty as if sold in the auction.

### 6 PURCHASE PRICE AND PAYMENT

(a) The buyer agrees to pay us, in addition to the hammer price of the lot, the buyer's premium, plus any applicable value added tax (VAT) and any applicable resale royalty (the 'Purchase Price'). The buyer's premium is 25% of the hammer price up to and including £50,000, 20% of the portion of the hammer price above £50,000 up to and including £1,000,000 and 12% of the portion of the hammer price above £1,000,000. Phillips reserves the right to pay from our compensation an introductory commission to one or more third parties for assisting in the sale of property offered and sold at auction.

(b) VAT is payable in accordance with applicable law. All prices, fees, charges and expenses set out in these Conditions of Sale are quoted exclusive of VAT.

(c) If the Artist's Resale Right Regulations 2006 apply to the lot, the buyer agrees to pay to us an amount equal to the resale royalty provided for in those regulations and we undertake to the buyer to pay such amount to the artist's collection agent. In circumstances where (i) we are on notice that the resale royalty is payable or (ii) we have not been able to ascertain the nationality of the artist, we will identify the lot with the symbol next to the lot number and will invoice the resale royalty to the buyer. If we subsequently determine that the nationality of the artist does not entitle him/her to the resale royalty on the lot, we will arrange a refund to the buyer of the amount of the royalty paid to us. If, after a sale in which we did not collect the resale royalty on a particular lot, we become aware that information provided to us prior to the auction concerning an artist's nationality was incorrect and the artist is entitled to the resale royalty on the lot, the buyer shall pay the resale royalty to us upon receipt of an invoice.

(d) Unless otherwise agreed, a buyer is required to pay for a purchased lot immediately following the auction regardless of any intention to obtain an export or import license or other permit for such lot. Payments must be made by the invoiced party in pounds sterling either by cash, cheque drawn on a UK bank or wire transfer, as follows:

(i) Phillips will accept payment in cash provided that the total amount paid in cash or cash equivalents does not exceed the local currency equivalent of US\$10,000.

(ii) Personal cheques and banker's drafts are accepted if drawn on a UK bank and the buyer provides to us acceptable government-issued identification. Cheques and banker's drafts should be made payable to "Phillips". If payment is sent by post, please send the cheque or banker's draft to the attention of the Client Accounting Department at Howick Place, London SW1P 1BB and ensure that the sale number is written on the cheque. Cheques or banker's drafts drawn by third parties will not be accepted.

(iii) Payment by wire transfer may be sent directly to Phillips. Bank transfer details will be provided on the Invoice for purchased lots.

(e) As a courtesy to clients, Phillips will accept American Express, Visa, MasterCard and UK-issued debit cards to pay for invoices of £50,000 or less. A processing fee will apply.

(f) Title in a purchased lot will not pass until Phillips has received the Purchase Price for that lot in cleared funds. Phillips is not obliged to release a lot to the buyer until title in the lot has passed and appropriate identification has been provided, and any earlier release does not affect the passing of title or the buyer's unconditional obligation to pay the Purchase Price.

## 7 COLLECTION OF PROPERTY

(a) Phillips will not release a lot to the buyer until we have received payment of its Purchase Price in full in cleared funds, the buyer has paid all outstanding amounts due to Phillips or any of our affiliated companies, including any charges payable pursuant to Paragraph 8 (a) below, and the buyer has satisfied such other terms as we in our sole discretion shall require, including completing any anti-money laundering or anti-terrorism financing checks. As soon as a buyer has satisfied all of the foregoing conditions, he or she should contact us at +44 (0) 207 318 4081 or +44 (0) 207 318 4082 to arrange for collection of purchased property.

(b) The buyer must arrange for collection of a purchased lot within seven days of the date of the auction. After the auction, we will transfer all lots to our fine art storage facility located near Wimbledon and will so advise all buyers. Purchased lots are at the buyer's risk, including the responsibility for insurance, from (i) the date of collection or (ii) seven days after the auction, whichever is the earlier. Until risk passes, Phillips will compensate the buyer for any loss or damage to a purchased lot up to a maximum of the Purchase Price paid, subject to our usual exclusions for loss or damage to property.

(c) As a courtesy to clients, Phillips will, without charge, wrap purchased lots for hand carry only. We do not provide packing, handling, insurance or shipping services. We will coordinate with shipping agents instructed by the buyer, whether or not recommended by Phillips, in order to facilitate the packing, handling, insurance and shipping of property bought at Phillips. Any such instruction is entirely at the buyer's risk and responsibility, and we will not be liable for acts or omissions of third party packers or shippers.

(d) Phillips will require presentation of government-issued identification prior to release of a lot to the buyer or the buyer's authorized representative.

## 8 FAILURE TO COLLECT PURCHASES

(a) If the buyer pays the Purchase Price but fails to collect a purchased lot within 30 days of the auction, the buyer will incur a late collection fee of £10 per day for each uncollected lot. Additional charges may apply to oversized lots. We will not release purchased lots to the buyer until all such charges have been paid in full.

(b) If a purchased lot is paid for but not collected within six months of the auction, the buyer authorizes Phillips, upon notice, to arrange a resale of the item by auction or private sale, with estimates and a reserve set at Phillips's reasonable discretion.

The proceeds of such sale will be applied to pay for storage charges and any other outstanding costs and expenses owed by the buyer to Phillips or our affiliated companies and the remainder will be forfeited unless collected by the buyer within two years of the original auction.

## 9 REMEDIES FOR NON-PAYMENT

(a) Without prejudice to any rights the seller may have, if the buyer without prior agreement fails to make payment of the Purchase Price for a lot in cleared funds within seven days of the auction, Phillips may in our sole discretion exercise one or more of the following remedies: (i) store the lot at Phillips's premises or elsewhere at the buyer's sole risk and expense; (ii) cancel the sale of the lot, retaining any partial payment of the Purchase Price as liquidated damages; (iii) reject future bids from the buyer or render such bids subject to payment of a deposit; (iv) charge interest at 12% per annum from the date payment became due until the date the Purchase Price is received in cleared funds; (v) subject to notification of the buyer, exercise a lien over any of the buyer's property which is in the possession of Phillips and instruct our affiliated companies to exercise a lien over any of the buyer's property which is in their possession and, in each case, no earlier than 30 days from the date of such notice arrange the sale of such property and apply the proceeds to the amount owed to Phillips or any of our affiliated companies after the deduction from sale proceeds of our standard vendor's commission, all sale-related expenses and any applicable taxes thereon; (vi) resell the lot by auction or private sale, with estimates and a reserve set at Phillips's reasonable discretion, it being understood that in the event such resale is for less than the original hammer price and buyer's premium for that lot, the buyer will remain liable for the shortfall together with all costs incurred in such resale; (vii) commence legal proceedings to recover the hammer price and buyer's premium for that lot, together with interest and the costs of such proceedings; (viii) set off the outstanding amount remaining unpaid by the buyer against any amounts which we or any of our affiliated companies may owe the buyer in any other transactions; (ix) release the name and address of the buyer to the seller to enable the seller to commence legal proceedings to recover the amounts due and legal costs; or (x) take such other action as we deem necessary or appropriate.

(b) The buyer irrevocably authorizes Phillips to exercise a lien over the buyer's property which is in our possession upon notification by any of our affiliated companies that the buyer is in default of payment. Phillips will notify the buyer of any such lien. The buyer also irrevocably authorizes Phillips, upon notification by any of our affiliated companies that the buyer is in default of payment, to pledge the buyer's property in our possession by actual or constructive delivery to our affiliated company as security for the payment of any outstanding amount due. Phillips will notify the buyer if the buyer's property has been delivered to an affiliated company by way of pledge.

(c) If the buyer is in default of payment, the buyer irrevocably authorizes Phillips to instruct any of our affiliated companies in possession of the buyer's property to deliver the property by way of pledge as the buyer's agent to a third party instructed by Phillips to hold the property on our behalf as security for the payment of the Purchase Price and any other amount due and, no earlier than 30 days from the date of written notice to the buyer, to sell the property in such manner and for such consideration as can reasonably be obtained on a forced sale basis and to apply the proceeds to any amount owed to Phillips or any of our affiliated companies after the deduction from sale proceeds of our standard vendor's commission, all sale-related expenses and any applicable taxes thereon.

## 10 RESCISSION BY PHILLIPS

Phillips shall have the right, but not the obligation, to rescind a sale without notice to the buyer if we reasonably believe that there is a material breach of the seller's representations and warranties or the Authorship Warranty or an adverse claim is made by a third party. Upon notice of Phillips election to rescind the sale, the buyer will promptly return the lot to Phillips, and we will then refund the Purchase Price paid to us. As described more fully in Paragraph 13 below, the refund shall constitute the sole remedy and recourse of the buyer against Phillips and the seller with respect to such rescinded sale.

## 11 EXPORT, IMPORT AND ENDANGERED SPECIES LICENCES AND PERMITS

Before bidding for any property, prospective buyers are advised to make their own enquiries as to whether a licence is required to export a lot from the United Kingdom or to import it into another country. Prospective buyers are advised that some countries prohibit the import of property made of or incorporating plant or animal material, such as coral, crocodile, ivory, whalebone, rhinoceros horn or tortoiseshell, irrespective of age, percentage or value. Accordingly, prior to bidding, prospective buyers considering export of purchased lots should familiarize themselves with relevant export and import regulations of the countries concerned. It is solely the buyer's responsibility to comply with these laws and to obtain any necessary export, import and endangered species licences or permits. Failure to obtain a licence or permit or delay in so doing will not justify the cancellation of the sale or any delay in making full payment for the lot. As a courtesy to clients, Phillips has marked in the catalogue lots containing potentially regulated plant or animal material, but we do not accept liability for errors or for failing to mark lots containing protected or regulated species.

## 12 DATA PROTECTION

(a) In connection with the supply of auction related services and other products and services, or as required by law, Phillips may ask clients to provide personal information about themselves or in certain other cases (such as to conduct credit checks, verify identity or prevent fraud) obtain information about clients from third parties. Phillips



may also occasionally use personal details provided by clients to send them marketing communications about our products, services or events. By agreeing to these Conditions of Sale and providing Phillips with personal details, clients agree that Phillips and our affiliated companies may use those details for the above purposes. If clients would like further information about our privacy policy or how to correct their data or opt-out from receiving further marketing communications, please contact us at +44 20 7318 4010.

(b) In order to fulfill the services clients have requested, Phillips may disclose clients' personal information to third parties such as transport providers. Such third parties may not be located within the European Economic Area (EEA). By agreeing to these Conditions of Sale, clients agree to such disclosure outside the EEA. Some of these countries may not offer legal protection of personal information equivalent to that offered within the EEA. It is Phillips's policy to require that any such third parties respect the privacy and confidentiality of our clients' information and adequately safeguard client information to standards that are comparable to the EEA. However, Phillips cannot guarantee that these third parties will do so.

### 13 LIMITATION OF LIABILITY

(a) Subject to sub-paragraph (e) below, the total liability of Phillips, our affiliated companies and the seller to the buyer in connection with the sale of a lot shall be limited to the Purchase Price actually paid by the buyer for the lot.

(b) Except as otherwise provided in this Paragraph 13, none of Phillips, any of our affiliated companies or the seller (i) is liable for any errors or omissions, whether orally or in writing, in information provided to prospective buyers by Phillips or any of our affiliated companies or (ii) accepts responsibility to any bidder in respect of acts or omissions, whether negligent or otherwise, by Phillips or any of our affiliated companies in connection with the conduct of the auction or for any other matter relating to the sale of any lot.

(c) All warranties other than the Authorship Warranty, express or implied, including any warranty of satisfactory quality and fitness for purpose, are specifically excluded by Phillips, our affiliated companies and the seller to the fullest extent permitted by law.

(d) Subject to sub-paragraph (e) below, none of Phillips, any of our affiliated companies or the seller shall be liable to the buyer for any loss or damage beyond the refund of the Purchase Price referred to in sub-paragraph (a) above, whether such loss or damage is characterised as direct, indirect, special, incidental or consequential, or for the payment of interest on the Purchase Price to the fullest extent permitted by law.

(e) No provision in these Conditions of Sale shall be deemed to exclude or limit the liability of Phillips or any of our affiliated companies to the buyer in respect of any fraud or fraudulent misrepresentation made by any of us or in respect of death or personal injury caused by our negligent acts or omissions.

### 14 COPYRIGHT

The copyright in all images, illustrations and written materials produced by or for Phillips relating to a lot, including the contents of this catalogue, is and shall remain at all times the property of Phillips and, subject to the provisions of the Copyright, Designs and Patents Act 1988, such images and materials may not be used by the buyer or any other party without our prior written consent. Phillips and the seller make no representations or warranties that the buyer of a lot will acquire any copyright or other reproduction rights in it.

### 15 GENERAL

(a) These Conditions of Sale, as changed or supplemented as provided in Paragraph 1 above, and Authorship Warranty set out the entire agreement between the parties with respect to the transactions contemplated herein and supersede all prior and contemporaneous written, oral or implied understandings, representations and agreements.

(b) Notices to Phillips shall be in writing and addressed to the department in charge of the sale, quoting the reference number specified at the beginning of the sale catalogue. Notices to clients shall be addressed to the last address notified by them in writing to Phillips.

(c) These Conditions of Sale are not assignable by any buyer without our prior written consent but are binding on the buyer's successors, assigns and representatives.

(d) Should any provision of these Conditions of Sale be held void, invalid or unenforceable for any reason, the remaining provisions shall remain in full force and effect. No failure by any party to exercise, nor any delay in exercising, any right or remedy under these Conditions of Sale shall act as a waiver or release thereof in whole or in part.

(e) No term of these Conditions of Sale shall be enforceable under the Contracts (Rights of Third Parties) Act 1999 by anyone other than the buyer.

### 16 LAW AND JURISDICTION

(a) The rights and obligations of the parties with respect to these Conditions of Sale and Authorship Warranty, the conduct of the auction and any matters related to any of the foregoing shall be governed by and interpreted in accordance with English law.

(b) For the benefit of Phillips, all bidders and sellers agree that the Courts of England are to have exclusive jurisdiction to settle all disputes arising in connection with all aspects of all matters or transactions to which these Conditions of Sale and Authorship Warranty relate or apply. All parties agree that Phillips shall retain the right to bring proceedings in any court other than the Courts of England.

(c) All bidders and sellers irrevocably consent to service of process or any other documents in connection with proceedings in any court by facsimile transmission, personal service, delivery by mail or in any other manner permitted by English law, the law of the place of service or the law of the jurisdiction where proceedings are instituted at the last address of the bidder or seller known to Phillips.

## AUTHORSHIP WARRANTY

Phillips warrants the authorship of property in this auction catalogue described in headings in **BOLD** or **CAPITALIZED** type for a period of five years from date of sale by Phillips, subject to the exclusions and limitations set forth below.

(a) Phillips gives this Authorship Warranty only to the original buyer of record (i.e., the registered successful bidder) of any lot. This Authorship Warranty does not extend to (i) subsequent owners of the property, including purchasers or recipients by way of gift from the original buyer, heirs, successors, beneficiaries and assigns; (ii) property where the description in the catalogue states that there is a conflict of opinion on the authorship of the property; (iii) property where our attribution of authorship was on the date of sale consistent with the generally accepted opinions of specialists, scholars or other experts; (iv) property whose description or dating is proved inaccurate by means of scientific methods or tests not generally accepted for use at the time of the publication of the catalogue or which were at such time deemed unreasonably expensive or impractical to use or likely in our reasonable opinion to have caused damage or loss in value to the lot; or (v) there has been no material loss in value of the lot from its value had it been as described in the heading of the catalogue entry.

(b) In any claim for breach of the Authorship Warranty, Phillips reserves the right, as a condition to rescinding any sale under this warranty, to require the buyer to provide to us at the buyer's expense the written opinions of two recognized experts approved in advance by Phillips. We shall not be bound by any expert report produced by the buyer and reserve the right to consult our own experts at our expense. If Phillips agrees to rescind a sale under the Authorship Warranty, we shall refund to the buyer the reasonable costs charged by the experts commissioned by the buyer and approved in advance by us.

(c) Subject to the exclusions set forth in subparagraph (a) above, the buyer may bring a claim for breach of the Authorship Warranty provided that (i) he or she has notified Phillips in writing within three months of receiving any information which causes the buyer to question the authorship of the lot, specifying the auction in which the property was included, the lot number in the auction catalogue and the reasons why the authorship of the lot is being questioned and (ii) the buyer returns the lot to Phillips in the same condition as at the time of its auction and is able to transfer good and marketable title in the lot free from any third party claim arising after the date of the auction. Phillips has discretion to waive any of the foregoing requirements.

(d) The buyer understands and agrees that the exclusive remedy for any breach of the Authorship Warranty shall be rescission of the sale and refund of the original Purchase Price paid. This remedy shall constitute the sole remedy and recourse of the buyer against Phillips, any of our affiliated companies and the seller and is in lieu of any other remedy available as a matter of law or equity. This means that none of Phillips, any of our affiliated companies or the seller shall be liable for loss or damage beyond the remedy expressly provided in this Authorship Warranty, whether such loss or damage is characterized as direct, indirect, special, incidental or consequential, or for the payment of interest on the original Purchase Price.

# PHILLIPS

## CHIEF EXECUTIVE OFFICER

Michael McGinnis

## CHIEF OPERATING OFFICER

Sean Cleary

## CHIEF BUSINESS DEVELOPMENT OFFICER

Patricia G. Hambrecht

## CHIEF FINANCIAL OFFICER

Annette Schwaer

## CHIEF INFORMATION OFFICER

Ben Carey

## SENIOR DIRECTORS

Olivier Vrankenne  
Finn Schouenborg Dombernowsky  
Vanessa Kramer Hallett  
Alexander Payne  
Rodman Primack

## DIRECTORS

Henry Allsopp  
Joseph D. Carlucci  
Alex Heminway  
Nazgol Jahan  
Cary Leibowitz  
Svetlana Marich  
Jean-Michel Placent  
Peter Sumner  
Kelly Troester  
Ben Williams

## INTERNATIONAL SPECIALISTS

**Brussels** Olivier Vrankenne, Head of Contemporary Art, Europe +32 486 43 43 44  
Bérénice Chef, Specialist, Contemporary Art +32 473 12 27 06

**Buenos Aires & London** Brooke Metcalfe, International Specialist, Contemporary Art +44 777 551 7060

**Istanbul** Deniz Atac, Consultant +90 533 374 1198

**Los Angeles** Maya McLaughlin, Specialist, Contemporary Art +1 323 791 1771

**Milan** Laura Garbarino, Senior International Specialist, Contemporary Art +39 339 478 9671

**Moscow** Svetlana Marich, Director and Senior International Specialist, Contemporary Art +7 495 225 88 22

**New York** Rodman Primack, Senior Director and International Specialist, Contemporary Art +1 212 940 1260

**Paris** Edouard de Moussac, Specialist, Contemporary Art +33 1 42 78 67 77

**Zurich** Niklaus Kuenzler, Specialist, Contemporary Art +41 79 533 90 00

## WORLDWIDE OFFICES

### NEW YORK

450 Park Avenue, New York, NY 10022, USA  
tel +1 212 940 1200 fax +1 212 940 1378

### BRUSSELS

rue Jean Baptiste Colyns 72, 1050 Brussels, Belgium  
tel +32 486 43 43 44

### GENEVA

23 quai des Bergues, 1201 Geneva, Switzerland  
tel +41 22 906 80 00 fax +41 22 906 80 01

### ISTANBUL

Meclisi Mebusan Caddesi, Deniz Apartmani No. 79/8  
Beyoglu 34427, Istanbul, Turkey  
tel +90 533 374 1198

### LOS ANGELES

7285 Woodrow Wilson, Los Angeles, CA 90068, USA  
tel +1 323 791 1771

### LONDON

Howick Place, London SW1P 1BB, United Kingdom  
tel +44 20 7318 4010 fax +44 20 7318 4011

### MILAN

via Vincenzo Monti 26, 20123 Milan, Italy  
tel +39 339 478 9671

### MOSCOW

Nikolskaya Str 19-21, 5th floor, 109012 Moscow, Russia  
tel +7 495 225 88 22 fax +7 495 225 88 87

### PARIS

46 Rue du Bac, 75007 Paris, France  
tel +33 1 42 78 67 77 fax +33 1 42 78 23 07

### ZURICH

Restelbergstrasse 89, 8044 Zurich, Switzerland  
tel +41 79 533 90 00

## SPECIALISTS AND DEPARTMENTS

### CONTEMPORARY ART

Michael McGinnis, Chief Executive Officer +1 212 940 1254  
Joseph D. Carlucci, International Business Director +1 212 940 1366

#### LONDON

Peter Sumner, Head of Contemporary Art, London +44 20 7318 4063  
George O'Dell, Head of Day Sale +44 20 7318 4093  
Henry Highley, Head of Under the Influence Sale +44 20 7318 4061

Henry Allsopp +44 20 7318 4060  
Tamila Kerimova +44 20 7318 4065  
Matt Langton +44 20 7318 4074  
Daniela Sánchez +44 20 7318 4090

Charlotte Salisbury +44 20 7318 4058  
Simon Tovey +44 20 7318 4084

#### NEW YORK

Zach Miner, Head of Evening Sale +1 212 940 1256  
Amanda Stoffel, Head of Day Sale +1 212 940 1261  
Laura González, Head of Latin America Sale +1 212 940 1216  
Benjamin Godsill, Head of Under the Influence Sale +1 212 940 1333

Jean-Michel Placent +1 212 940 1263  
Sarah Mudge Sapirstein +1 212 940 1259  
Rodman Primack +1 212 940 1260

Chloë Waddington +1 212 940 1288  
Viola McGowan +1 212 940 1226  
Joshua Friedman +1 212 940 1392  
Jed Moch +1 212 940 1301

### MODERN AND CONTEMPORARY EDITIONS

Cary Leibowitz, Worldwide Co-Director +1 212 940 1222  
Kelly Troester, Worldwide Co-Director +1 212 940 1221

#### LONDON

Robert Kennan, Head of Sale +44 20 7318 4010  
Rebecca Tooby-Desmond +44 20 7318 4079

#### NEW YORK

Jannah Greenblatt +1 212 940 1332  
Mark Ferkul +1 212 940 1238

### EXHIBITIONS

Arianna Jacobs +44 20 7318 4054

### PRIVATE SALES

Susanna Brockman +44 20 7318 4041

### DESIGN

Alexander Payne, Senior Director +44 20 7318 4052  
and Worldwide Head, Design

#### LONDON

Ben Williams, Head of Sale +44 20 7318 4027

Domenico Raimondo +44 20 7318 4016  
Marine Hartogs +44 20 7318 4021  
Marcus McDonald +44 20 7318 4095

Annabelle Wills +44 20 7318 4019  
Sofia Sayn-Wittgenstein +44 20 7318 4023

#### NEW YORK

Alex Heminway, New York Director +1 212 940 1268  
Meaghan Roddy, Head of Sale +1 212 940 1266

Marcus Tremonto +1 212 940 1268  
Cordelia Lembo +1 212 940 1265

Lauren Sohn +1 212 940 1268

### PHOTOGRAPHS

Vanessa Kramer Hallett, Senior Director +1 212 940 1243  
and Worldwide Head, Photographs

#### LONDON

Lou Proud, Head of Photographs, London +44 20 7318 4018  
Alexandra Bibby +44 20 7318 4087  
Laetitia Morenz +44 20 7318 4092

#### NEW YORK

Shlomi Rabi +1 212 940 1246  
Caroline Deck +1 212 940 1247  
Sarah Krueger +1 212 940 1225  
Carol Ehlers +1 212 940 1245

#### PARIS

Jonas Tebib +33 1 42 78 67 77

### JEWELS

Nazgol Jahan, Worldwide Director +1 212 940 1283

#### NEW YORK

Joanna Bengoa +1 212 940 1302

### PRIVATE CLIENT SERVICES

Finn Schouenborg Dombernowsky, +44 20 7318 4010  
International Head, Private Clients

#### LONDON

Anna Skigin +44 20 7318 4042  
Dawn Zhu +44 20 7318 4017  
Adam Clay +44 20 7318 4048  
Lily Atherton Hanbury +44 20 7318 4040

#### NEW YORK

Philae Knight +1 212 940 1313  
Caroline Conegliano +1 212 940 1297  
Anna Lin Poulson +1 212 940 1361  
Sara Tayeb-Khalifa +1 212 940 1383

### CLIENT DEVELOPMENT

#### LONDON

Isadora Tharin  
Linda Pyke  
Brooke Metcalfe

#### NEW YORK

Carolyn Bachman  
Amy Sheldon

### BUSINESS DIRECTOR

#### LONDON

Paul de Bono +44 20 7318 4070

### MUSEUM SERVICES DEPARTMENT

#### NEW YORK

Lauren Shadford +1 212 940 1257  
Cecilia Wolfson +1 212 940 1258

### OFFICE OF THE CHIEF EXECUTIVE OFFICER

#### LONDON

Fiona McGovern +44 20 7318 4099

#### NEW YORK

Elizabeth Anne Wallace +1 212 940 1303

### ART AND PRODUCTION

Andrea Koronkiewicz, Director of Creative Services  
Orlann Capazorio, Production Manager  
Fernando Dias de Souza, Graphic Designer  
Jen Cogan, Graphic Designer  
Jeff Velazquez, Production Artist

### COMMUNICATIONS AND MARKETING

#### LONDON

Alex Godwin-Brown,  
Communications and Marketing Manager

#### NEW YORK

Trish Walsh, Marketing Manager  
Tiana Webb-Evans, Director of Communications



## SALE INFORMATION

### AUCTION

26 September 2013 at 6pm

### VIEWING

19-26 September

Monday - Saturday 10am - 6pm

Sunday 12pm - 6pm

### VIEWING & AUCTION LOCATION

Howick Place, London SW1P 1BB

### WAREHOUSE & COLLECTION LOCATION

110-112 Morden Road, Mitcham, Surrey CR4 4XB

### SALE DESIGNATION

When sending in written bids or making enquiries, please refer to this sale as UK050313 or Nordic Design

### DESIGN DEPARTMENT

### WORLDWIDE HEAD

Alexander Payne +44 20 7318 4052

### INTERNATIONAL CONSULTANT

Marcus Tremonto +1 212 940 1268

### NEW YORK DIRECTOR

Alex Heminway +1 212 940 1268

### HEADS OF SALE

Ben Williams +44 20 7318 4027

Meaghan Roddy +1 212 940 1266

### SPECIALISTS

Domenico Raimondo +44 20 7318 4026

Marine Hartogs +44 20 7318 4021

Marcus McDonald +44 20 7318 4095

Cordelia Lembo +1 212 940 1265

### ADMINISTRATORS

Annabelle Wills +44 20 7318 4019

Sofia Sayn-Wittgenstein +44 20 7318 4023

Lauren Sohn +1 212 940 1268

### REGISTRARS

Oliver Gottschalk +44 20 7318 4033

Walter Egan +1 212 940 1321

### CATALOGUES

Emma Miller +44 20 7318 4039 +1 212 940 1291

catalogues@phillips.com

Catalogues \$35/€25/£22 at the Gallery

### ABSENTEE & TELEPHONE BIDS

tel +44 20 7318 4045 fax +44 20 7318 4035

Anna Ho +44 20 7318 4044

Susanna Brockman +44 20 7318 4041

bidslondon@phillips.com

### CLIENT ACCOUNTS

Jason King, Director +44 20 7318 4086

Buyer Accounts:

Carolyn Whitehead +44 20 7318 4020

Seller Accounts:

Surbjit Dass +44 20 7318 4072

### CLIENT SERVICES

Madalena Horta e Costa, Lucinda Newman, Natasha Pryce

+44 20 7318 4010

### WAREHOUSE & SHIPPING

Lydia Stewart +44 20 7318 4050

Ameeta Lodhia +44 20 7318 4026

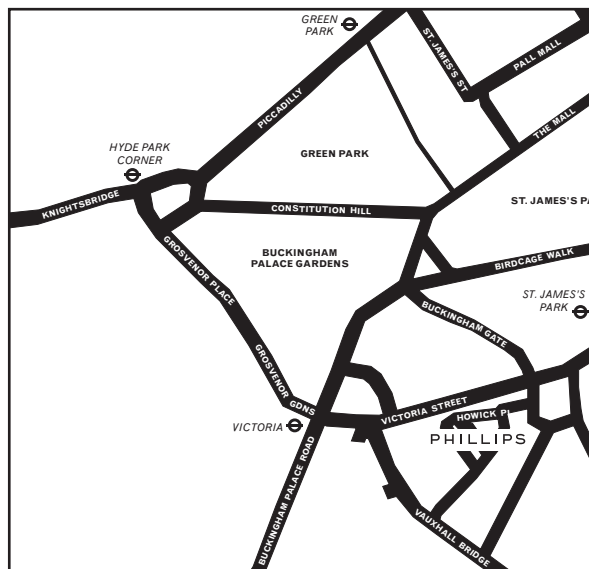
Jan Navratil +44 20 7318 4081

### PHOTOGRAPHY

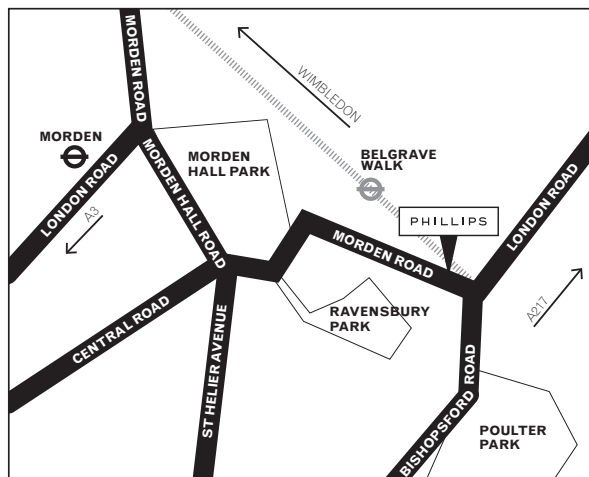
Byron Slater

Kent Pell

Peter Hepplewhite



Viewing and Auction location



Warehouse and collection location

# PHILLIPS

7 Howick Place London SW1P 1BB  
PHILLIPS.COM +44 20 7318 4010  
bidslondon@phillips.com

## TELEPHONE AND ABSENTEE BID FORM

PLEASE RETURN THIS FORM BY FAX TO +44 20 7318 4035 OR EMAIL IT TO [BIDSLONDON@PHILLIPS.COM](mailto:bidslondon@phillips.com) AT LEAST 24 HOURS BEFORE THE SALE. PLEASE READ CAREFULLY THE INFORMATION IN THE RIGHT COLUMN AND NOTE THAT IT IS IMPORTANT THAT YOU INDICATE WHETHER YOU ARE APPLYING AS AN INDIVIDUAL OR ON BEHALF OF A COMPANY.

Please select the type of bid you wish to make with this form (please select one):

- ☐ **ABSENTEE BID FORM**  
☐ **TELEPHONE BID FORM**

Please indicate in what capacity you will be bidding (please select one):

- ☐ **AS A PRIVATE INDIVIDUAL**  
☐ **ON BEHALF OF A COMPANY**

Sale Title		Sale Number	Sale Date
Title	First Name	Surname	
Company (if applicable)		Client Number	
VAT number (if applicable)			
Address			
City		State/Country	
Post Code			
Phone		Mobile	
Email		Fax	
Phone (for Phone Bidding only)			
Lot number In Consecutive Order	Brief description	Maximum pound sterling price* Absentee Bids Only	

\* Excluding Buyer's Premium and VAT

## FINANCIAL INFORMATION

For your bid to be accepted, we require the following information for our reference only. Please note that you may be contacted to provide a bank reference:

Credit card type	Expiration date
Credit card number	

For anyone wishing to bid on lots with a low pre-sale estimate of above £5,000, please provide the following information for our reference only:

Bank name	Contact
Telephone / fax	Account number

I hereby authorise the above references to release information to PHILLIPS. Please bid on my behalf up to the limits shown for the indicated lots without legal obligations to PHILLIPS, its staff or agents; and subject to the Conditions of Sale and Authorship Warranty printed in the catalogue, additional notices or terms printed in the catalogue and supplements to the catalogue posted in the salesroom, and in accordance with the above statements and conditions.

Signature	Date
-----------	------

- ☐ **I ACCEPT THE CONDITIONS OF SALE OF PHILLIPS AS STATED IN OUR CATALOGUES AND ON OUR WEBSITE**

• **PRIVATE PURCHASES** Proof of identity in the form of government-issued identification will be required.

• **COMPANY PURCHASES** We require a copy of government-issued identification (such as the certificate of incorporation) to verify the status of the company. This should be accompanied by an official document confirming the company's EU VAT registration number, if applicable, which we are now required by HMRC to hold.

• **CONDITIONS OF SALE** All bids are placed and executed, and all lots are sold and purchased, subject to the Conditions of Sale printed in the catalogue. Please read them carefully before placing a bid. Your attention is drawn to Paragraph 4 of the Conditions of Sale.

• If you cannot attend the sale, we can execute bids confidentially on your behalf.

• Phillips charges the successful bidder a commission, or buyer's premium, on the hammer price of each lot sold. The buyer's premium is payable by the buyer as part of the total purchase price at the following rates: 25% of the hammer price up to and including £50,000, 20% of the portion of the hammer price above £50,000 up to and including £1,000,000 and 12% of the portion of the hammer price above £1,000,000.

• "Buy" or unlimited bids will not be accepted. Alternative bids can be placed by using the word "OR" between lot numbers.

• For absentee bids, indicate your maximum limit for each lot, excluding the buyer's premium and any applicable VAT. Your bid will be executed at the lowest price taking into account the reserve and other bidders. On no reserve lots, in the absence of other bids, your bid will be executed at approximately 50% of the low pre-sale estimate or at the amount specified, if less than 50% of the low estimate.

• Your bid must be submitted in the currency of the sale and will be rounded down to the nearest amount consistent with the auctioneer's bidding increments.

• If we receive identical bids, the first bid received will take precedence.

• Arranging absentee and telephone bids is a free service provided by us to prospective buyers. While we will exercise reasonable care in undertaking such activity, we cannot accept liability for errors relating to execution of your bids except in cases of wilful misconduct. Agreement to bid by telephone must be confirmed by you promptly in writing or by fax. Telephone bid lines may be recorded.

• Please submit your bids to the Bid Department by fax at +44 20 7318 4035 or scan and email to [bidslondon@phillips.com](mailto:bidslondon@phillips.com) at least 24 hours before the sale. You will receive confirmation by email within one business day. To reach the Bid Department by phone please call +44 20 7318 4045.

• Absent prior payment arrangements, please provide a bank reference. Payment for lots can be made by cash (up to £5,000), credit card (up to £50,000) using Visa, American Express or Mastercard only, UK debit cards, wire transfer, banker's draft or personal cheque with identification, drawn on UK banks. Please note that credit cards are subject to a surcharge.

• Lots cannot be collected until payment has cleared and all charges have been paid.

• By signing this Bid Form, you consent to our use of your personal data, including sensitive personal data, in accordance with Phillips's Privacy Policy published on our website at [www.phillips.com](http://www.phillips.com), available at our main reception desk or available upon request by emailing [scleary@phillips.com](mailto:scleary@phillips.com).

## PHILLIPS CONTACT

Name

## IN-PERSON REGISTRATION FORM

TO PRE-REGISTER, PLEASE SUBMIT THIS FORM BY FAX TO +44 20 7318 4035 OR BY EMAIL TO BIDS@PHILLIPS.COM, OR BRING IT WITH YOU TO 7 HOWICK PLACE, LONDON SW1P 1BB TO REGISTER ON THE DAY OF THE AUCTION.

Please indicate in what capacity you will be bidding (please select one):

- ☐ **AS A PRIVATE INDIVIDUAL**  
☐ **ON BEHALF OF A COMPANY**

Sale Title	Sale number	Sale date
Client number (if known)		
Title	First name	Surname
Company name (complete this only if you are bidding on behalf of a company)		
VAT number (if applicable)		
Address		
City		
State / County		
Postcode / zip code		
Country		
Phone	Mobile	Fax
Email		

## FINANCIAL INFORMATION

For your bid to be accepted, we require the following information for our reference only. Please note that you may be contacted to provide a bank reference:

Credit card type	Expiration date
Credit card number	

For anyone wishing to bid on lots with a low pre-sale estimate of above £5,000, please provide the following information for our reference only:

Bank name	Contact
Telephone / fax	Account number

Please note that you may be contacted to provide additional bank references.

I hereby authorize the above references to release information to PHILLIPS. I agree that all bids and purchases are subject to the Conditions of Sale and Authorship Warranty printed in the catalogue, additional notices or terms printed in the catalogue and supplements to the catalogue posted in the salesroom, and in accordance with the above statements and conditions. I assume all responsibility for payment for the goods purchased under the assigned paddle. If I am acting as an agent, I agree to be personally responsible for all purchases made on behalf of my client(s), unless other arrangements are confirmed in writing prior to each auction.

Signature	Date
-----------	------

☐ **I ACCEPT THE CONDITIONS OF SALE OF PHILLIPS AS STATED IN OUR CATALOGUES AND ON OUR WEBSITE.**

Paddle Number

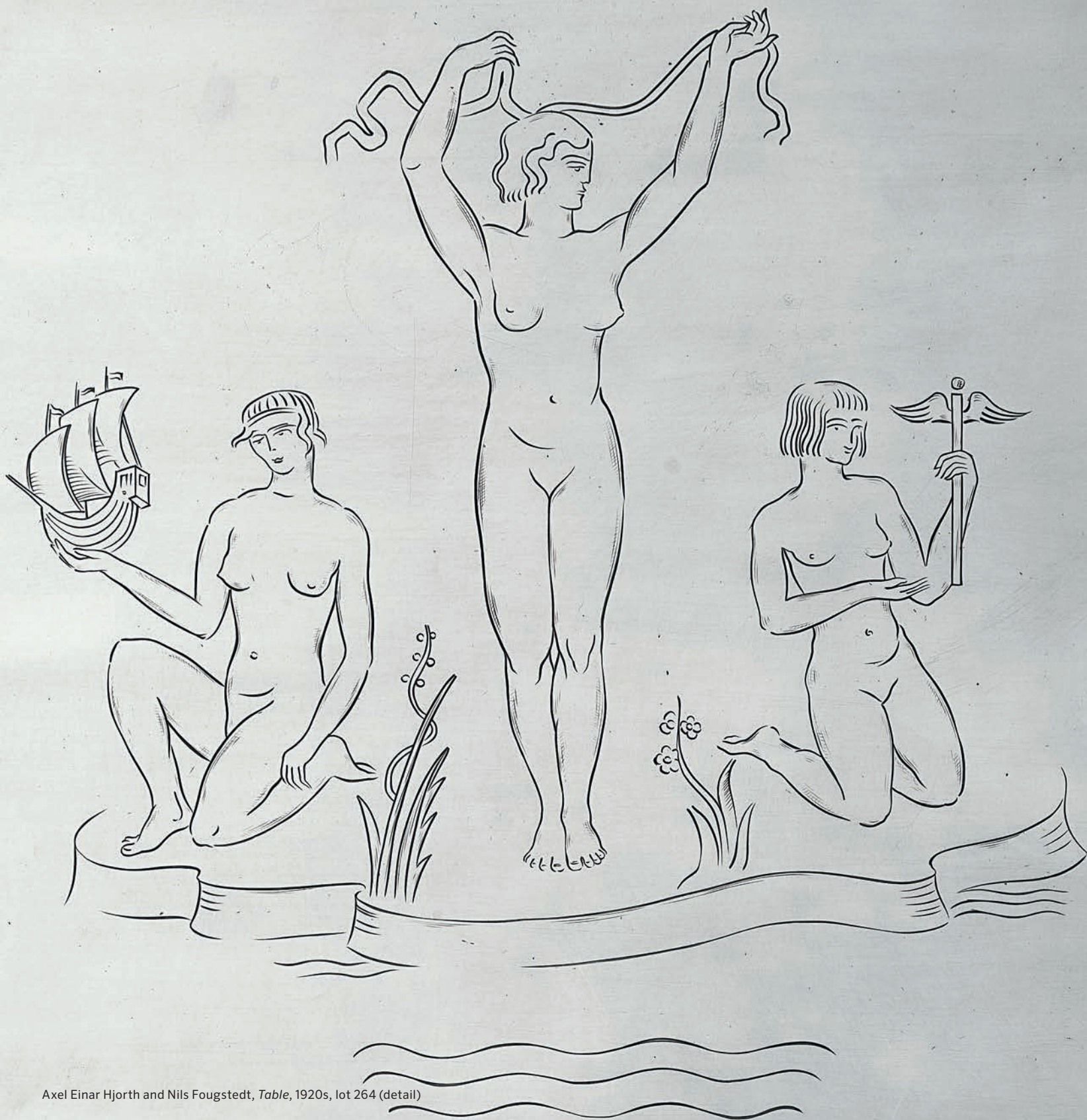
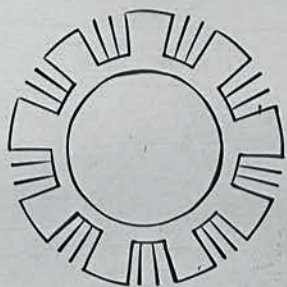
--

- **PRIVATE PURCHASES** Proof of identity in the form of government-issued identification will be required.
- **COMPANY PURCHASES** We require a copy of government-issued identification (such as the certificate of incorporation) to verify the status of the company. This should be accompanied by an official document confirming the company's EU VAT registration number, if applicable, which we are now required by HMRC to hold.
- **CONDITIONS OF SALE** All bids are placed and executed, and all lots are sold and purchased, subject to the Conditions of Sale printed in the catalogue. Please read them carefully before placing a bid. Your attention is drawn to Paragraph 4 of the Conditions of Sale.
- Phillips charges the successful bidder a commission, or buyer's premium, on the hammer price of each lot sold. The buyer's premium is payable by the buyer as part of the total purchase price at the following rates: 25% of the hammer price up to and including £50,000, 20% of the portion of the hammer price above £50,000 up to and including £1,000,000 and 12% of the portion of the hammer price above £1,000,000.
- Absent prior payment arrangements, please provide a bank reference. Payment for lots can be made by cash (up to £5,000), credit card (up to £50,000) using Visa, American Express or Mastercard only, UK debit cards, wire transfer, banker's draft or personal cheque with identification, drawn on UK banks. Please note that credit cards are subject to a surcharge.
- Lots cannot be collected until payment has cleared and all charges have been paid.
- By signing this Bid Form, you consent to our use of your personal data, including sensitive personal data, in accordance with Phillips's Privacy Policy published on our website at [www.phillips.com](http://www.phillips.com), available at our main reception desk or available upon request by emailing [scleary@phillips.com](mailto:scleary@phillips.com).

## PHILLIPS CONTACT

Name





Axel Einar Hjorth and Nils Fougstedt, *Table*, 1920s, lot 264 (detail)













PHILLIPS.COM