



PHILLIPS

JEWELS

NEW YORK 8 DECEMBER 2014







PHILLIPS

JEWELS

SALE INFORMATION

NEW YORK 8 DECEMBER 2014 2PM

AUCTION & VIEWING LOCATION

450 Park Avenue New York 10022

AUCTION

8 DECEMBER 2014 at 2pm

VIEWING

1 – 8 December

Monday – Saturday 10am – 6pm

Sunday 12pm – 6pm

SALE DESIGNATION

When sending in written bids or making enquiries
please refer to this sale as NY060214 or Jewels.

ABSENTEE AND TELEPHONE BIDS

tel +1 212 940 1228 fax +1 212 924 1749

bidsnewyork@phillips.com

WORLDWIDE HEAD OF JEWELRY

Nazgol Jahan

njahan@phillips.com

SPECIALISTS

Kristen Dowling

kdowling@phillips.com

Lane McLean

lmclean@phillips.com

ADMINISTRATOR

Christina Alford

calford@phillips.com

Front cover A Magnificent Diamond Necklace, Lot 201

Inside front cover An Important Tanzanite, Diamond, Sapphire, Emerald, and Cultured Pearl Necklace, Lot 163

First page A Superb Colombian Emerald and Diamond Ring, Lot 193

An Impressive Pair of Diamond and Emerald or Tahitian Cultured Pearl Ear Pendants, *David Webb*, Lot 174

Opposite An Important Unheated Ceylon Sapphire and Diamond Ring, Lot 162

A Diamond Ring, Lot 153; An Important Diamond Ring, Lot 177



1
PROPERTY OF A LADY
A Gold and White Sapphire Necklace
TEMPLE ST. CLAIR
Designed as a gold link chain, interspersed by a series of floral plaques enhanced by circular-cut white sapphires, mounted in 18K yellow gold, length 16 inches.
Signed with Temple St. Clair maker's mark

Estimate \$800-1,200

2
PROPERTY OF A LADY
A Pair of Gold and Coin Earclips
Each set with a coin, within a hammered gold frame, mounted in 18K yellow gold, length 1 inch.

Estimate \$500-800



3
PROPERTY OF A LADY
A Gold, Aquamarine, and Diamond Suite
Comprising a ring, the front centering upon a circular-cut aquamarine, enhanced by circular-cut diamonds; a pair of ear clips en suite, mounted in 18K yellow gold, ring size 8, ear clip length 1¼ inches.

Estimate \$2,500-3,500



4

PROPERTY OF A LADY

A Gold, White Sapphire and Rock Crystal Pendant Necklace TEMPLE ST. CLAIR

Suspending a rock crystal sphere, cage-set within a polished gold frame, from a spectacle-set circular-cut white sapphire link chain, mounted in 18K yellow gold, chain length 16 inches, pendant length 1¼ inches.

Signed with Temple St. Clair maker's mark, with an original pouch

Estimate \$1,000-1,500

5

PROPERTY OF A LADY

A Multi-Color Sapphire, Aquamarine, and Spinel Necklace

Designed as a line of vari-cut multi-color sapphires and an aquamarine, suspending cushion-cut sapphires and a spinel from polished gold foliate spacer links, mounted in 9K yellow gold, length 16½ inches.

Estimate \$6,000-8,000



6

PROPERTY OF A GENTLEMAN

A Set of Silver and Gold Gilt Ducks BUCCELLATI

A set of five, each designed as a duck or duckling with blackened gold and silver wirework feathers, to the polished gold gilt beak and textured webbed feet, mounted in silver and gold, height 1½ to 5 inches.

Signed 'Gianmaria Buccellati'

Estimate \$2,000-3,000



7

A Pair of Gold, Silver, and Diamond Earclips

MARILYN F. COOPERMAN

Each designed as a bombé teardrop plaque, enhanced by circular-cut diamonds, mounted in 14K yellow gold and silver, length 1¼ inches.

Signed 'MFC'

Estimate \$4,000-6,000

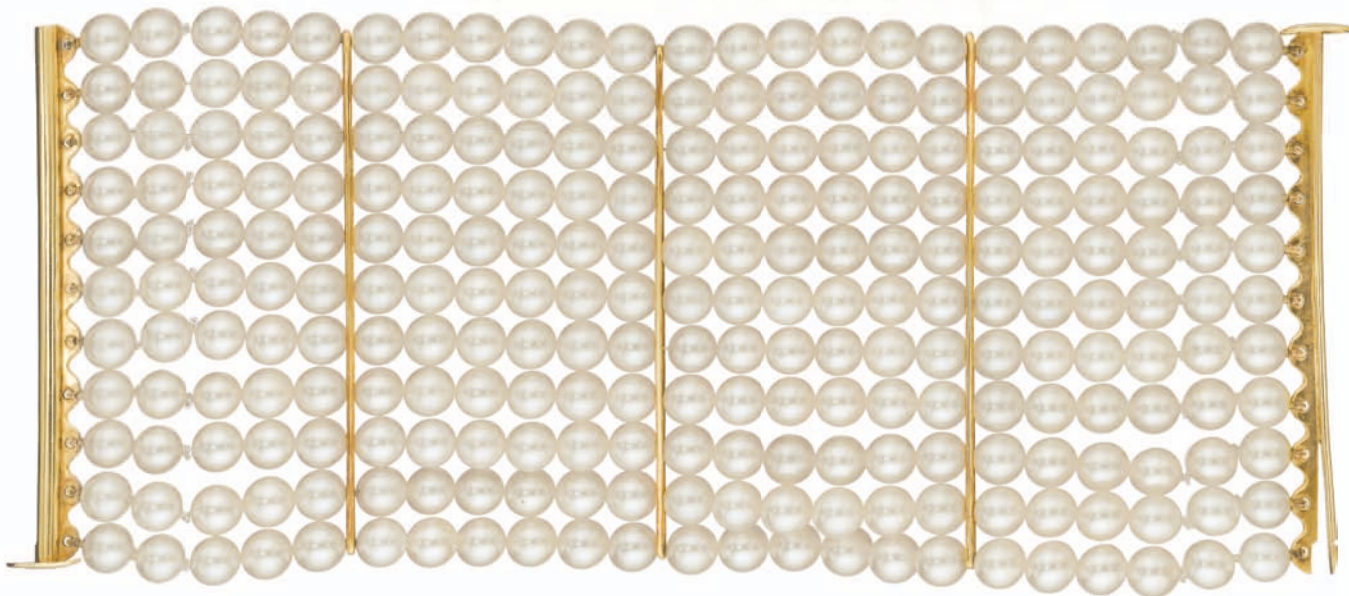
8

A Gold 'Hawaii' Longchain Necklace BUCCELLATI

Designed as a cascade of brushed circular gold links, mounted in 18K yellow gold, length 40 inches.

With an original pouch and box

Estimate \$9,000-11,000



9

PROPERTY OF A PRIVATE COLLECTOR

A Cultured Pearl Choker Necklace and Bracelet

Comprising a choker necklace designed as eleven strands of cultured pearls, measuring approximately 6.50 mm, interspersed by polished gold spacers; a bracelet en suite, mounted in 18K yellow gold, necklace length 13 inches, bracelet length 6¾ inches.

Estimate \$5,000-8,000

10



11



12



13



10

A Pair of Wood and Cultured Pearl Cufflinks

TRIANON

Each designed as a square carved wood bombé plaque, centrally enhanced by a collet-set cultured pearl, to the similarly designed link, mounted in 18K yellow gold, length ½ inch.

Signed 'Trianon'

Estimate \$600-900

11

PROPERTY OF A LADY

A Lady's Diamond and Stainless Steel Wristwatch

GEORG JENSEN

Of quartz movement, the circular mirror dial with silver hands to the circular-cut diamond-set bezel and polished open cuff bracelet, mounted in stainless steel, diameter 2½ inches.

Signed 'Georg Jensen', no.001637

Estimate \$1,500-2,500

12

A Multi-Gem Brooch

ASPREY

Centrally set with an oval-cut pink tourmaline within a surround set with vari-cut blue topaz, pink tourmaline, peridot, citrine, green tourmaline, lemon quartz, and amethyst, mounted in 18K white gold, length 1¼ inches.

Signed 'Asprey'

Estimate \$3,000-5,000

13

A Multi-Gem Pendant Necklace

ASPREY

Designed as a linear cluster of vari-cut blue topaz, pink tourmaline, peridot, citrine, green tourmaline, lemon quartz, and amethyst, suspended from a fine link chain enhanced by spectacle-set diamonds, mounted in 18K white gold, chain length 16 to 18 inches, pendant length 17½ inches.

Signed 'Asprey'

Estimate \$4,000-6,000

14



16



15



14

A Pair of Carnelian and Gold Ear Clips

ALDO CIPULLO FOR CARTIER 1974

Each designed as a stylized button, centering upon a polished gold accent, to the carved carnelian plaque, mounted in 18K yellow gold, length 1½ inches.

Signed 'Cartier', 'A. Cipullo', '1974'

Estimate \$5,500-7,500

16

A Pair of Gold and Enamel Earclips

SCHLUMBERGER FOR TIFFANY & CO.

Each designed as a bombé half-hoop, enhanced by white enamel and a linear motif of polished gold accents, mounted in 18K yellow gold, length 1 inch.

Signed 'Tiffany Schlumberger', 'Made in France', with an original box

Estimate \$3,500-5,000

15

A Gold 'Parentesi' Watch BULGARI

Of quartz movement, the circular gold tone dial, with gold hands, to the gold spring band bracelet, designed as a series of interlocking geometric links, mounted in 18K yellow gold, diameter 2 inches.

With an original box

Estimate \$4,500-6,000

17



19



20



18



21



17

A Pair of Gold Cufflinks TOM FORD

Each designed as a polished gold circular plaque enhanced by a motif of concentric circles, to the gold swivel link, mounted in 18K yellow gold, length $\frac{5}{8}$ inch.
Signed 'Tom Ford'

Estimate \$1,000-2,000

19

PROPERTY OF A GENTLEMAN A Pair of Gold and Enamel 'Mallard Duck' Cufflinks

Each designed as a polished gold mallard duck, decorated with green, black, red, and white enamel, mounted in 18K yellow gold, length $1\frac{1}{4}$ inches.

Estimate \$1,500-2,000

18

A Mother of Pearl and Gold Dress Set TIFFANY & CO.

Comprising a pair of cufflinks, each designed as a carved mother-of-pearl baton, to the polished gold swivel link, and three shirt studs en suite, mounted in 18K yellow gold, cufflink length 1 inch, shirt stud length $\frac{1}{2}$ inch.
Signed 'Tiffany & Co.', with an original box

Estimate \$1,000-2,000

20

A Pair of Wood and Citrine Cufflinks TRIANON

Each designed as a circular carved wood plaque, centrally enhanced by a collet-set citrine, to the similarly designed link, mounted in 18K yellow gold, length $\frac{1}{2}$ inch.
Signed 'Trianon'

Estimate \$450-650

21

A Pair of Gold and Wood Cufflinks CARTIER

Each set with carved wood baton terminals, joined by a polished gold bar, mounted in 18K white and yellow gold, length 1 inch.
Signed 'Cartier', no.683510

Estimate \$1,500-2,500

22



23



24



22

PROPERTY OF A GENTLEMAN

A Lady's Gold Wristwatch PATEK PHILIPPE

Of mechanical movement, the rectangular blue dial with gold hands and baton markers, to the brushed gold case and textured gold tapered band, mounted in 18K yellow gold, length 7 inches.

Dial and clasp signed 'Patek Philippe Geneve', no.16011, no.C21921, with French assay marks

Estimate \$2,000-3,000

23

PROPERTY OF A LADY

A Gold, Diamond, Sapphire, Ruby, and Emerald Bracelet

Of flexible design, the textured gold links enhanced by circular-cut diamonds, emeralds, rubies, and sapphires, to the concealed clasp and gold safety chain, mounted in 18K yellow gold, diameter 2½ inches.

Estimate \$2,500-3,500

24

A Pair of Citrine and Gold Earclips CARTIER

Each designed as a stylized flower with scalloped petals, centering upon a rectangular-cut citrine, mounted in 14K yellow gold, length 1 inch.

Signed 'Cartier', with French assay marks

Estimate \$4,500-6,000

25

26

27



25

PROPERTY OF A LADY

An Emerald Longchain Necklace

Designed as a four-strand graduated emerald bead necklace, joined by an adjustable woven thread back chain, length 32 to 35 inches.

Estimate \$1,000-2,000

26

A Pair of Gold 'Spirali' Earclips BUCCELLATI

Each designed as a brushed gold spiral knot, mounted in 18K yellow gold, length $\frac{3}{4}$ inches.

Signed 'Buccellati', 'Italy,' with an original box

Estimate \$1,500-2,500

27

PROPERTY OF A LADY

A Pair of Gold "Hawaii" Earrings BUCCELLATI

Each designed as a cascade of brushed circular gold links, mounted in 18K yellow gold, length $2\frac{1}{2}$ inches.

Signed 'Buccellati Italy', with an original box

Estimate \$2,000-3,000

28



29



30



28

A Pair of Gold and Enamel Earclips DAVID WEBB

Each designed as a bombé crescent plaque decorated with white enamel, to the polished gold inner hoop border, mounted in 18K yellow gold, length 1½ inches.

Signed 'David Webb'

Estimate \$5,000-7,000

30

A Gold, Diamond, Emerald, and Enamel Brooch

FRED

Designed as a leopard, the textured gold body enhanced by black enamel spots, to the pavé-set diamond and emerald eyes, mounted in 18K yellow gold, length 2¼ inches.

Signed 'Fred-Paris'

Estimate \$2,000-3,000

29

A Gold, Diamond, Emerald, and Enamel Brooch

FRED

Designed as a spotted panther, the body enhanced by black enamel and polished gold spots, to the textured gold tail and pavé-set diamond and emerald eyes, mounted in 18K yellow gold, length 2¼ inches.

Signed 'Fred-Paris'

Estimate \$2,000-3,000



31

A Gold and Steel 'Panther' Necklace CARTIER
Designed as a collar necklace of rigid steel accented by bands of polished gold, to the panther head terminals enhanced by tri-color gold collars, mounted in stainless steel and 18K yellow, white, and rose gold, diameter 5 inches. Signed 'Cartier', no. 757272, with an original fitted box

Estimate \$5,000-7,000

32

A Pair of Onyx and Gold Ear Clips
ALDO CIPULLO FOR CARTIER 1974
Each designed as a stylized button, centering upon a polished gold accent, to the carved onyx plaque, mounted in 18K yellow gold, length 1½ inches. Signed 'Cartier', 'A. Cipullo', '1974'

Estimate \$5,000-7,000

33

A Gold and Diamond 'Spirit' Ring MARINA B
Designed as an undulating line, the top set with pavé-set diamonds, mounted in 18K white gold, size 5½. Signed 'MB', no. C6647

Estimate \$2,000-3,000

34

A Pair of Diamond and Cultured Pearl Ear Pendants
Each designed as a tapered flexible line of circular-cut and collet-set diamonds, suspending a cultured Tahitian pearl drop, mounted in 18K white gold, length 2¾ inches.

Estimate \$2,200-3,200



35

PROPERTY OF A PRIVATE COLLECTOR

A Set of Cultured Pearl Necklaces

Comprising three pearl necklaces, pearls measuring from approximately 13.00 to 9.10 mm, each joined by a concealed clasp, mounted in 18K yellow and white gold, length 43½ inches, 45 inches, and 55 inches.

Estimate \$3,000-5,000

36



39



37



38



36

A Pair of Shell, Emerald, Sapphire, and Gold Earclips SEAMAN SCHEPPS

Each designed as a sculpted shell, accented by polished gold ridges, to the cabochon emerald and sapphire terminals, mounted in 18K yellow gold, length 1¾ inches. Signed 'P.S.V. for Seaman Schepps', with an original box

Estimate \$1,800-2,500

38

A Gold and Diamond Ring ASPREY

The front designed as a spiral motif, terminating with a collet-set diamond, enhanced by pavé-set diamonds, mounted in 18K yellow gold, size 4½.

Estimate \$1,500-2,500

37

A Multi-Gem and Diamond Ring BULGARI

The top of articulated design, enhanced by vari-cut blue topaz, green tourmaline, peridot, citrine, aquamarine, rhodolite garnet and pavé-set diamonds, mounted in 18K yellow gold, size 7. Signed 'Bulgari'

Estimate \$1,500-2,500

39

A Gold and Diamond 'Happy Diamonds' Necklace CHOPARD

Designed as a polished gold heart, enhanced by pavé-set diamonds, centering upon five free-floating collet diamonds, suspended from a gold chain, mounted in 18K yellow gold, necklace length 16 inches, pendant length 7⁄8 inch. Signed 'Chopard', no.2252020, 79/4516

Estimate \$2,800-3,800

40



41



42



40

A Pair of Gold and Diamond Earclips MARINA B

Each designed as a polished gold spiral motif plaque enhanced by pavé-set diamonds, mounted in 18K yellow gold, length 1¼ inches.

Signed 'Marina B', no.3550

Estimate \$5,000-7,000

42

'A Pair of Gold 'Op-La' Ear Pendants MARINA B

Each designed as a line of polished gold bombé links, mounted in 18K yellow gold, length 1½ inches.

Signed 'Marina B', no.B1346

Estimate \$2,000-3,000

41

A Gold and Wood Bracelet SEAMAN SCHEPPS

Designed as a series of five wood curb links interlocking with six polished gold links, mounted in 18K yellow gold, length 7¼ inches.

Signed 'Seaman Schepps'

Estimate \$5,000-7,000



43

PROPERTY OF A PRIVATE COLLECTOR

A Cultured Pearl Necklace

Of thirty South Sea cultured pearls, measuring from approximately 14.50 to 11.75 mm, joined by a concealed clasp, mounted in 18K white gold, length 17 inches.

Estimate \$3,000-5,000

44

PROPERTY OF A LADY

A Pair of Diamond and Cultured Pearl Earclips

Each designed as a flower, centering upon a cultured pearl, to the circular-cut diamond petals, mounted in 18K white gold, length 1½ inches.

Estimate \$5,000-8,000

45

A Lady's Gold 'Tubogas' Wristwatch BULGARI

Of quartz movement, the circular black dial, with gold hands, to the yellow gold spring band bracelet, mounted in 18K yellow gold, 2¼ inches diameter.

Signed 'Bulgari', no.BB192T P.16717

Estimate \$4,000-6,000

45



46



47



48



46

A Pair of 'Shell' and Aquamarine Cufflinks

TRIANON

Each designed as a shell, centrally enhanced by a collet-set aquamarine, to the similarly designed link, mounted in 18K yellow gold, length ½ inch.

Signed 'Trianon'

Estimate \$1,000-1,500

49



47

PROPERTY OF A LADY

An Emerald, Diamond, and Sapphire Brooch

Designed as a foliate spray of vari-cut sapphires and diamonds, to the textured gold leaves and cabochon emerald, mounted in 18K yellow and white gold, length 2½ inches.

Estimate \$5,000-8,000

49

PROPERTY OF A LADY

A Peridot and Diamond Ring

Centering upon an oval-cut peridot within a circular-cut diamond surround, to the circular-cut diamond florets and twisted wirework hoop, mounted in 18K yellow and white gold, size 5.

Estimate \$4,500-6,000

48

PROPERTY OF A LADY

A Gold and Diamond Bracelet

Designed as two rows of textured gold links enhanced by circular-cut diamonds, mounted in 18K yellow gold, length 7¼ inches.

Estimate \$5,000-8,000

50

PROPERTY OF A GENTLEMAN

A Pair of Gold, Diamond, and Enamel 'Jockey Cap' Cufflinks

Each designed as a polished gold jockey cap, decorated with blue enamel and centering upon a collet-set diamond, mounted in 18K yellow gold, length 1¼ inches.

Estimate \$1,200-1,800

51



52



53



54



50



51

A Gold and Enamel Suite BUCCELLATI

Comprising a ring designed as a textured gold band, accented by blue, green, and red plique-à-jour enamel of circular and kite-shaped motifs; a pair of hoop earrings en suite, mounted in 18K yellow gold, ring size 5¼, ear clip length ¾ inch.

Signed 'Buccellati Italy', no.U809, with an original box

Estimate \$3,000-5,000

53

PROPERTY OF A GENTLEMAN

A Gold and Diamond 'Snowdrop' Band REINSTEIN | ROSS

Designed as a series of seven clusters of circular-cut diamonds, mounted in 20K yellow gold, size 4½.

Signed 'R/R' for Reinstein Ross

Estimate \$1,500-2,500

52

A Gold, Sapphire, and Emerald 'Pineapple' Brooch SCHLUMBERGER FOR TIFFANY & CO.

Designed as a pineapple with textured gold leaves, set with circular-cut sapphires and emeralds, to the polished gold foliate accent enhanced by a cabochon emerald, mounted in 18K yellow gold, length 2½ inches.

Signed 'Tiffany' 'Schlumberger'

Estimate \$6,000-9,000

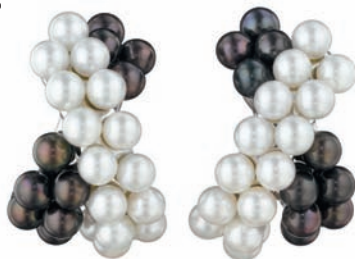
54

A Gold and Diamond Band

Designed as a bi-colored polished gold band enhanced by circular-cut diamonds, mounted in 18K yellow and white gold, size 6.

Estimate \$1,200-1,800

55



56



57



59



58



55

A Pair of Cultured Pearl Earclips VERDURA

Each of cross-over design, the front set with two rows each of white and black cultured pearls, mounted in 18K white gold, length 1¼ inches.

Signed 'Verdura'

Estimate \$4,000-6,000

56

A Diamond and Black Diamond Dress Set

Comprising a pair of cufflinks, each link designed as a circular bombé plaque, to the polished gold swivel link, set with circular-cut diamonds and black diamonds, and four shirt studs en suite, mounted in 18K white gold, cufflink length ⅞ inch, shirt stud length ½ inch.

Estimate \$5,000-7,000

57

PROPERTY OF A PRIVATE COLLECTOR

A Diamond and Onyx Ring

Centrally set with a marquise-cut diamond, flanked by carved onyx shoulders to the polished hoop, mounted in 18K white gold, size 4.

Estimate \$2,000-3,000

58

A Pair of Onyx and Diamond Cufflinks TRIANON

Each designed as an octagonal onyx plaque, centrally enhanced by a collet-set diamond, to the similarly designed link, mounted in 18K white gold, length ½ inch.

Signed 'Trianon'

Estimate \$800-1,200

59

A Gold, Onyx, Emerald, and Diamond 'Winking Cat' Brooch VAN CLEEF & ARPELS

Designed as a cat, the textured gold body decorated with cabochon onyx torso, the head enhanced by a cabochon emerald eye with diamond accents and a ruby-set nose, mounted in 18K yellow gold, length 2 inches.

Signed 'Van Cleef & Arpels', no.83049, with French assay marks

Estimate \$3,500-5,000

60

A Pair of Diamond Earclips VAN CLEEF & ARPELS

Each designed as a flower, set entirely with circular-cut diamonds, mounted in 18K yellow gold, length ⅝ inch.

Signed 'VCA', no.B1784A2

Estimate \$7,000-9,000

61

60



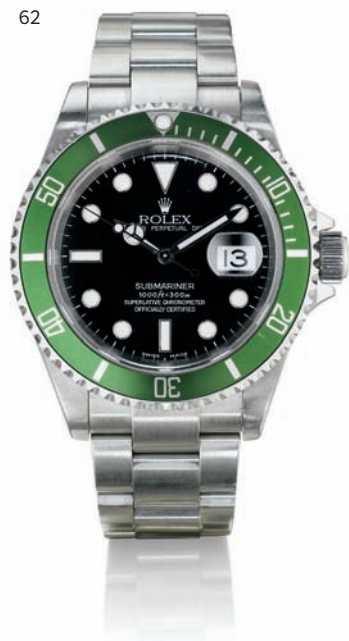
61

A Multi-Strand Cultured Pearl and Diamond Necklace

Designed as five strands of cultured pearls, interspersed by vari-colored baroque cultured pearls, joined by a circular-cut diamond bar clasp, mounted in 18K white gold, length 22¼ inches to 33½ inches.

Estimate \$2,500-3,500

62



62

PROPERTY OF A GENTLEMAN

A Stainless Steel 'Submariner' Men's Wristwatch ROLEX

Of automatic movement, the circular black dial with luminescent markers and hands, with date aperture at 3 o'clock, to the tapered link band, mounted in stainless steel, diameter 2¼ inches.

Dial and clasp signed 'Rolex', clasp no.93250, with an original box

Estimate \$5,000-8,000

64



63

A Chrysoprase and Diamond Dress Set

MARGHERITA BURGNER

Comprising a pair of cufflinks, each set with a square chrysoprase bombé plaque, within a circular-cut diamond surround, to the swivel link; and four dress shirts en suite, mounted in 18K white gold, cufflinks length ¾ inch, shirt studs ½ inch.

Signed 'Margherita Burgener', 'Italy', with a Margherita Burgener box

Estimate \$6,000-8,000

64

A Jet, Emerald, and Diamond Dress Set

MARGHERITA BURGNER

Comprising a pair of cufflinks, each designed as a square jet plaque, centering upon four calibré-cut emeralds and a circular-cut diamond, to the pavé-set emerald baton terminal, and four shirt studs en suite, mounted in 18K white gold, cufflink length ¾ inch, shirt stud length ½ inch.

Signed 'Margherita Burgener', 'Italy', with a Margherita Burgener box

Estimate \$5,000-7,000

63



65



65

PROPERTY OF A PRIVATE COLLECTOR

A Baroque Cultured Pearl Choker Necklace and Bracelet Set

Comprising a choker necklace designed as four strands of silver baroque cultured pearls, measuring from approximately 15.75 to 9.00 mm, joined by a polished gold clasp; a bracelet en suite, mounted in 18K white gold, necklace length 11¾ to 12½ inches, bracelet length 7¼ inches.

Estimate \$5,000-7,000

66



67



68



66

An Amethyst, Colored Diamond, and Diamond Ring

MARGHERITA BURGENER

Of bombé design, centering upon an oval-cut amethyst weighing approximately 14.30 carats, enhanced by a pavé-set diamond surround, to the circular-cut colored diamond gallery, mounted in 18K white gold, size 7½.

Signed 'Margherita Burgener', 'Italy', with a Margherita Burgener box

Estimate \$6,000-8,000

67

A Pair of Aquamarine and Diamond Ear Pendants

MARGHERITA BURGENER

Each suspending a detachable pear-shape aquamarine, weighing approximately 36.36 carats in total, within a pavé-set diamond surround, from an undulating line of circular-cut diamond stars, mounted in 18K white gold, length 2½ inches.

Signed 'Margherita Burgener', 'Italy', with a Margherita Burgener box

Estimate \$8,000-10,000

68

A Sapphire and Diamond Dress Set

Comprising a pair of cufflinks, each double link designed as a square bombé plaque, to the similarly designed swivel link, set with circular-cut sapphires and diamonds, and four shirt studs en suite, mounted in 18K white gold, cufflink length ¾ inch, shirt stud length ½ inch.

Estimate \$5,000-7,000

69

A Silver and Lacquer 'Hotlips' Ring

SOLANGE AZAGURY-PARTRIDGE

Designed as a set of bombé lips enhanced by purple lacquer, mounted in silver, size 6.

Signed 'SAP', with British assay marks

Estimate \$550-700

70

An Amethyst and Blue Topaz Longchain Necklace

Designed as an oval-cut spectacle-set amethyst and blue topaz longchain, mounted in 18K white gold, length 72 inches. Signed 'Piranesi'

Estimate \$6,000-8,000

71

A Pair of Gold and Mother-of-Pearl Earclips

TIFFANY & CO. 1985

Each designed as a foliate plaque, inlaid with mother-of-pearl, mounted in 18K yellow gold, length 1 inch.

Signed 'T&Co.', '1985'

Estimate \$1,700-2,500

72

A Chalcedony, Diamond, and Gold Ring

MARGHERITA BURGENER

Set with a circular-cut chalcedony, weighing approximately 16.80 carats, with circular-cut diamond bombé prongs, to the polished gold hoop, mounted in 18K white gold, size 7.

Signed 'Margherita Burgener', 'Italy', with a Margherita Burgener box

Estimate \$2,200-3,000

70



69



71



72



75



73

A Pair of Chrysoprase, Chrome Diopside, Jade, and Diamond Ear Pendants

MARGHERITA BURGNER

Each suspending a chrysoprase drop, suspended from a circular-cut chrome diopside spacer link, to the carved jade foliate surmount enhanced by pavé and collet-set diamonds, mounted in 18K white gold, length 2¾ inches. Signed 'Margherita Burgener', 'Italy', with a Margherita Burgener box

Estimate \$3,000-5,000

74

A Pair of Gold and Diamond Hoop Earrings

Each designed as a pavé-set diamond hoop, mounted in 18K rose gold, length 1½ inches.

Estimate \$4,000-6,000

74



73



75

A Diamond Bangle Bracelet

Designed as a hinged bombé bangle, entirely set with circular-cut diamonds, mounted in 18K rose gold, diameter 2¼ inches.

Estimate \$17,000-25,000

76

A Rutilated Quartz, Diamond, and Gold Necklace

MARGHERITA BURGNER

Designed as a gold, oval link chain enhanced by two collet-set rutilated quartz rectangular plaques, mounted in 18K yellow gold, length 36 inches.

Signed 'Margherita Burgener', 'Italy', with a Margherita Burgener box

Estimate \$8,000-10,000

77

A Gold and Diamond Cuff Bracelet TIFFANY & CO.

Designed as a polished gold cuff, centering upon three openwork flower motifs, to the circular-cut diamond accent, mounted in 18K yellow gold, diameter 2¾ inches. Signed 'T&Co.' 'Italy'

Estimate \$4,000-6,000

76



77





78



79

78

A Gold, Diamond, and Ebony Watch Pendant Necklace VAN CLEEF & ARPELS

Of quartz movement, the rectangular mother-of-pearl dial with applied central IX and III numerals within a rectangular ebony case, the front decorated with three circular-cut diamond lines, from a white gold snake chain, mounted in 18K white gold, length 26 inches.

Signed 'Van Cleef & Arpels', with French assay marks and maker's marks, no.141893, with an original box, pouch, and certificate of authenticity

Estimate \$4,000-6,000

79

A Gold and Diamond Pendant Necklace ENIGMA

Designed as an open-work articulated disc, enhanced by circular-cut diamonds suspended from a fine link chain, mounted in 18K white gold, length 18 inches.

Signed 'Enigma'

Estimate \$1,800-2,500

80



80

A Gold, Diamond, and Black Diamond Bracelet ENIGMA

The flexible double-sided bracelet composed of eight gold cylindrical links enhanced by circular-cut diamonds and black diamonds, opening to reveal polished gold spherical spacers, mounted in 18K yellow gold, length 7 inches. Signed 'Enigma'

Estimate \$7,000-9,000

83



81

PROPERTY OF A GENTLEMAN

A Platinum 'Tank' Wristwatch CARTIER

Of mechanical movement, the rectangular white dial with blue hands and black Roman numeral markers, to the sapphire crown and navy blue leather band, mounted in platinum, length 9 inches.

Case and dial signed 'Cartier', no.16011, no.C21921, with French assay marks

Estimate \$4,000-6,000

82

A Pair of Diamond and Black Diamond Hoop Earrings

Each designed as a pav -set diamond and black diamond hoop, mounted in 18K white gold, length 1 3/4 inches.

Estimate \$4,000-6,000

83

A Blue Sapphire, White Sapphire, Ruby, and Diamond Brooch

Designed as an American flag set entirely with calibr  cut blue sapphires, white sapphires, and rubies, to the polished gold flag pole enhanced by a collet-set diamond, mounted in 18K white gold, length 1 5/8 inches.

Estimate \$2,000-3,000

84



85



86



84

A Pair of Retro Ruby and Diamond Earclips

BOUCHERON 1945

Each designed as a flower, centering upon a cabochon ruby, accented by circular-cut diamonds, mounted in 18K yellow gold, length 1 inch.

Signed 'Boucheron' 'Paris', with French assay marks

Estimate \$3,000-5,000

85

A Ruby, Diamond, and Gold Bracelet

TIFFANY & CO.

Designed as a line of oval cabochon rubies enhanced by circular-cut diamonds, framed by polished gold drop-shaped bombé links, to the baguette and circular-cut diamond clasp, mounted in 18K yellow gold and platinum, length 6¾.

Signed 'Tiffany & Co.'

Estimate \$10,000-15,000

86

A Pair of Gold and Diamond 'Leaf' Earclips

Of foliate design, each centering upon a row of five circular-cut diamonds, mounted in 18K yellow gold, length 1¼ inches.

With French assay marks

Estimate \$2,000-3,000



87

88

89



90



87

A Gold 'Mailon' Necklace CARTIER

Designed as three lines of polished gold links, mounted in 18K yellow gold, length 15½ inches.

Signed 'Cartier', no.612510, with French assay marks

Estimate \$10,000-12,000

89

A Pair of Gold, Diamond, and Enamel Earclips

SCHLUMBERGER FOR TIFFANY & CO.

Each designed as a bombé half-hoop, enhanced by red paillonné enamel and a polished gold linear motif accented by collet-set diamonds, mounted in 18K yellow gold, length 1 inch.

Signed 'Tiffany & Co.' 'Schlumberger Std.' 'France'

Estimate \$6,500-9,000

88

PROPERTY OF A LADY

A Diamond Ring TIFFANY & CO.

Centering upon a circular-cut diamond, weighing approximately 2.13 carats, enhanced by channel-set circular-cut diamond shoulders, mounted in platinum, size 6.

Signed 'Tiffany & Co.', with an original box

Estimate \$30,000-50,000

90

A Gold, Ruby, and Diamond Brooch TIFFANY & CO.

Designed as a flower, set with circular-cut rubies and diamond, to the textured gold petals and large bloom enhanced by articulated petals, mounted in 18K yellow gold, length 2¼ inches.

Signed 'Tiffany & Co.'

Estimate \$2,000-3,000

92



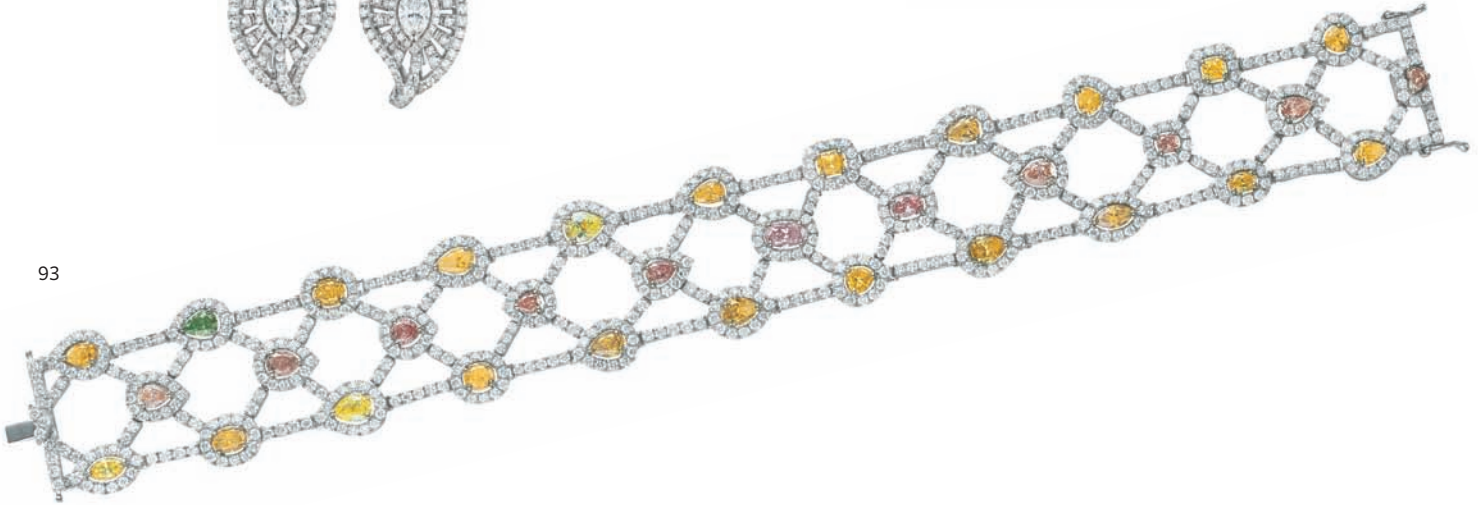
94



91



93



91

A Pair of Diamond Earclips

Each of foliate design, set entirely with pavé-set diamonds, centering upon a marquise-cut diamond, mounted in 18K white gold, length 1 inch.

Estimate \$5,000-7,000

92

PROPERTY OF A LADY

A Diamond Ring Set

Set with a marquise-cut diamond, framed on either side by step-cut diamond shoulders, accompanied by a contoured diamond band of similar design, mounted in platinum, size 6.

Estimate \$6,000-8,000

93

A Multi-Color Diamond and Diamond Bracelet

Designed as three lines of vari-cut multi-color diamonds within pavé-set diamond surrounds, joined by pavé-set diamond links, mounted in platinum, length 7¾.

With report no.2161279606 dated 08 July 2014 from the Gemological Institute of America stating that the pink oval-cut diamond weighing approximately 0.35 carats is Fancy Light to Fancy Pink, Natural Color;

With report no.1166546218 dated 08 September 2014 from the Gemological Institute of America stating that the brown-pink pear-shape diamond weighing approximately 0.18 carats is Fancy to Fancy Deep Brown-Pink, Natural Color

Estimate \$22,000-32,000

94

PROPERTY OF A GENTLEMAN

A Diamond Ring

Set with a square-cut diamond, weighing approximately 1.71 carats, mounted in platinum, size 5¼.

With report no.15687093 dated 08 January 2007 from the Gemological Institute of America, stating that the diamond weighing 1.71 carats is H color and VVS2 clarity

Estimate \$8,000-12,000



95

A Pair of Gold and Diamond Ear Pendants KWIAT

Each suspending a three-tiered pavé-set diamond drop, enhanced by collet-set diamond fringes, spacer links, and surmount, mounted in 18K white gold, chain length 16 inches, pendant length 1½ inches.

no.44899

Estimate \$2,600-3,600



96

96

A Gold and Diamond Pendant Necklace KWIAT

Suspending a two-tiered pavé-set diamond pendant, enhanced by collet-set diamond fringes and spacer links, from a fine link chain, mounted in 18K white gold, chain length 16 inches, pendant length 1½ inches.

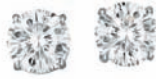
Signed 'Kwiat', no.36792

Estimate \$1,800-2,800

97



98



99



100



101



97

PROPERTY OF A LADY

A Sapphire and Diamond Ring

Centering upon an oval-cut sapphire weighing approximately 6.83 carats, within a circular-cut diamond surround, flanked by pear-shape diamond shoulders, mounted in platinum, size 6.

With report no.17488897 dated 28 August 2008 from the Gemological Institute of America, stating that the sapphire is natural, with indications of heating

Estimate \$9,000-12,000

98

PROPERTY OF A PRIVATE COLLECTOR

A Pair of Diamond Studs

Each set with a circular-cut diamond, weighing approximately 1.52 carats and 1.52 carats, mounted in 18K white gold, length ¼ inch.

With report no.2165675114 dated 21 October 2014 from the Gemological Institute of America stating that the diamond weighing 1.52 carats is G color, VVS1 clarity

With report no.1162673915 dated 21 October 2014 from the Gemological Institute of America stating that the diamond weighing 1.52 carats is I color, VVS2 clarity

Estimate \$15,000-20,000

99

A Diamond Bracelet

Designed as three rows of circular-cut diamonds, mounted in 18K white gold, length 6½ inches.

Estimate \$3,000-5,000

100

A Cultured Pearl and Diamond Ring

Of asymmetric design, set with a South Sea cultured pearl measuring approximately 14.10 by 12.30 mm, to the vari-cut diamond cluster surround and baguette-cut diamond terminal, mounted in 18K white gold and platinum, size 6.

Estimate \$3,500-5,000

101

PROPERTY OF A LADY

A Diamond Brooch/Pendant

Designed as a stylized leaf enhanced by circular-cut diamonds, to the polished gold stem, mounted in 18K yellow and white gold, length 2 inches.

Estimate \$1,000-2,000

102

A Diamond and Pearl Pendant/Brooch Necklace

The detachable pendant designed as a round openwork plaque, set entirely with old-cut diamonds and cultured pearls, suspended from a sautoir designed as a series of navette-shaped links enhanced by circular-cut diamonds, interspersed by collet-set diamonds, mounted in 18K white gold and platinum, sautoir length 27 inches, pendant length 2 inches.

Estimate \$25,000-35,000

103

A Pair of Sapphire and Diamond Ear Pendants

Each suspending a pear-shape unheated Ceylon sapphire, weighing approximately 5.79 and 5.73 carats, within a circular-cut diamond surround, to the marquise-cut diamond spacer links and vari-cut diamond cluster surmount, mounted in 14K white gold, length 1 7/8 inches.

With report no.022970 dated 13 June 2014 from the German Foundation for Gemstone Research, stating that the sapphires weighing 5.73 carats and 5.79 carats are of Sri Lankan origin with no indications of heating

Estimate \$13,000-18,000

103



104



105



106



107



104

A Pair of Cultured Pearl and Diamond Earclips

Designed as a circular-cut diamond drop-shaped bombé surmount, suspending a detachable South Sea cultured pearl drop, accented by a collet-set diamond, mounted in 18K white gold, length 1¾ inch.

Estimate \$2,000-3,000

106

An Amethyst and Pink Sapphire Bracelet

L. JULIAN ET FILS

Designed as a line of oval-cut amethysts interspersed by oval bombé plaques enhanced by pavé-set pink sapphires and amethysts, mounted in 18K rose gold, length 7½ inches. With French assay marks

Estimate \$2,500-3,500

105

A Diamond Ring

Of foliate design, the top set with marquise-cut diamonds within pavé-set diamond surrounds, to the open polished gold hoop, mounted in 18K white gold, size 6.5.

Estimate \$6,500-8,500

107

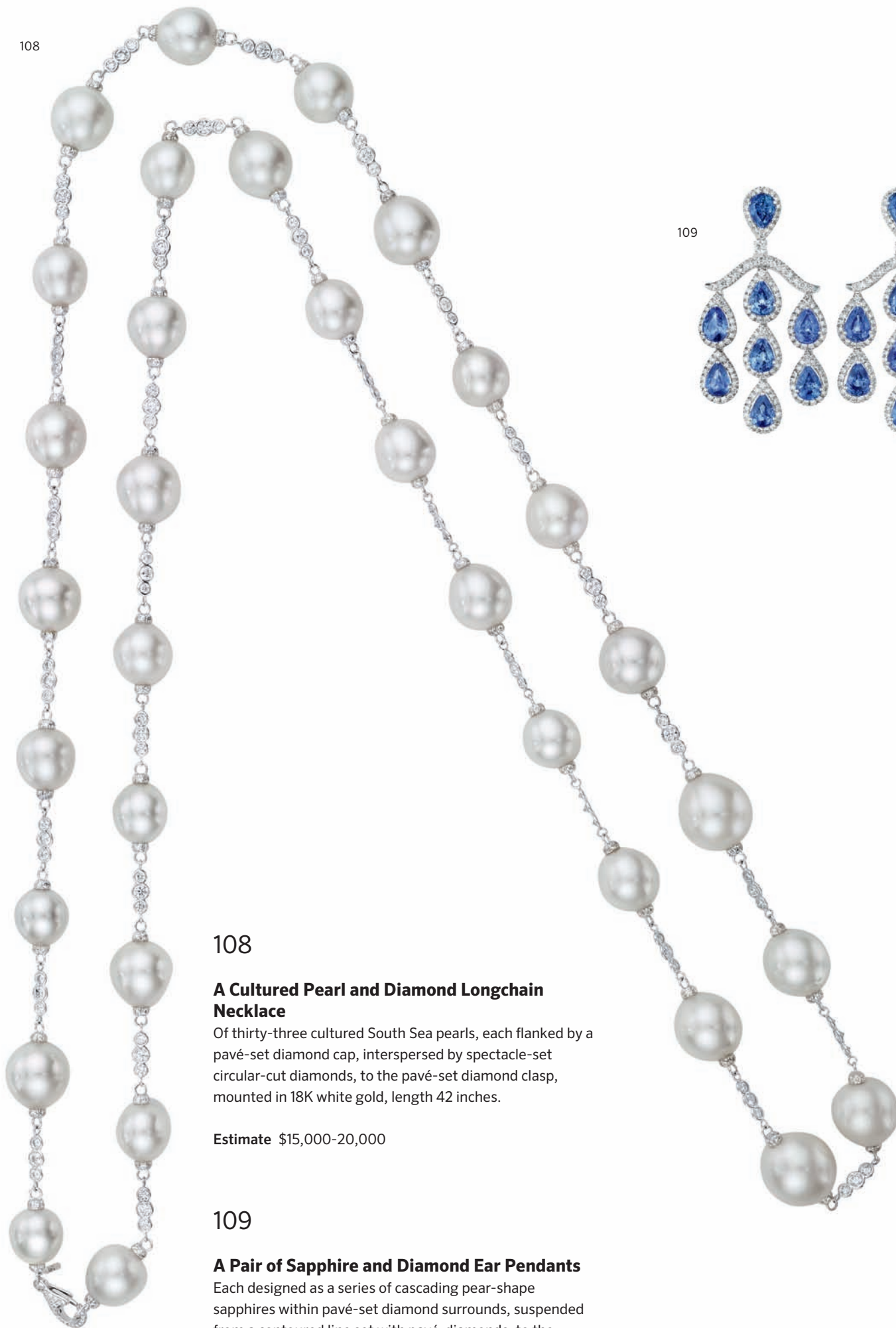
A Pair of Chalcedony, Diamond, Pink Tourmaline, and Amethyst Earclips

L. JULIAN ET FILS

Each centering upon a cabochon pink chalcedony, within a bombé surround enhanced by pavé-set diamonds, pink tourmaline, and amethyst, mounted in 18K white gold, length 1 inch. With French assay marks

Estimate \$2,500-3,500

108



108

A Cultured Pearl and Diamond Longchain Necklace

Of thirty-three cultured South Sea pearls, each flanked by a pavé-set diamond cap, interspersed by spectacle-set circular-cut diamonds, to the pavé-set diamond clasp, mounted in 18K white gold, length 42 inches.

Estimate \$15,000-20,000

109



109

A Pair of Sapphire and Diamond Ear Pendants

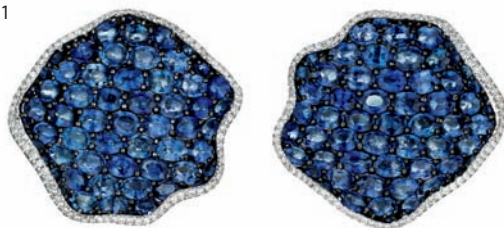
Each designed as a series of cascading pear-shape sapphires within pavé-set diamond surrounds, suspended from a contoured line set with pavé-diamonds, to the similarly designed surmount, mounted in 18K white gold, length 2 inches.

Estimate \$5,000-7,000

110



111



112



110

A Pair of Amethyst and Sapphire Ear Pendants

Each suspending a detachable cushion-cut amethyst weighing approximately 45.78 carats in total, accented by circular-cut sapphires, from a bombé surmount set entirely with pavé-set sapphires, mounted in 18K white gold, length 1½ inches.

Estimate \$3,500-5,000

112

A Sapphire, Diamond, and Gold Cuff Bracelet

Of bombé design, each hinged terminal enhanced by oval-cut sapphires and circular-cut diamonds, mounted in 18K white gold, diameter 2¼ inches.

Estimate \$9,000-12,000

111

A Pair of Sapphire and Diamond Earclips

Each designed as a flower petal, set entirely with oval and circular-cut sapphires, to the pavé-set diamond border, mounted in 18K white gold, length 1¼ inches.

Estimate \$7,500-9,000

113

A Cultured Pearl and Diamond Suite

Comprising a necklace, designed as two graduated strands of Tahitian cultured pearls, measuring from approximately 11.20 to 13.20 mm, joined by a circular-cut diamond clasp; a pair of circular-cut diamond earclips en suite suspending a detachable Tahitian cultured pearl drop, mounted in 18K white gold, necklace length 17 inches to 19 inches, earclips length 1 inch.

Estimate \$15,000-20,000



113

114



114

A Diamond Eternity Band

Designed as a wide eternity band, centrally set with sixteen rectangular-cut diamonds framed by a circular-cut diamond border, mounted in platinum, size 6.

Estimate \$18,000-26,000

115



115

A Pair of Sapphire and Gold Cufflinks TRIANON

Each designed as a square bombé plaque set entirely with pavé-set sapphires, to the similarly designed link, mounted in 18K white gold, length ½ inch. Stamped with Trianon maker's mark

Estimate \$2,500-3,500

116



117



118



116

A Pair of Turquoise and Diamond Ear Pendants

Each suspending cabochon natural Persian turquoise and circular-cut diamond florets, from a line of turquoise cabochon and circular-cut diamond clusters, mounted in 18K white gold, length 2½ inches.

Estimate \$8,000-10,000

118

A Sapphire and Diamond Ring

Centering upon a cushion-cut sapphire weighing approximately 5.62 carats total, to the split pavé-set diamond shoulders and hoop, mounted in 18K white gold, size 6.

With report no.5151332286 dated 09 April 2013 from the Gemological Institute of America, stating that the sapphire is of Sri Lankan origin with indications of heating

Estimate \$16,000-25,000

117

A Diamond and Gold 'Maillon Panthère' Bracelet

Designed as three rows of polished gold links, alternately enhanced by circular-cut diamonds, mounted in 18K white gold, length 7¼ inches.
Signed 'Cartier'

Estimate \$7,000-9,000

119

A Baroque Cultured Pearl and Diamond Necklace

Of forty-seven South Sea baroque cultured pearls, measuring from approximately 15.80 to 13.00 mm, accented by circular-cut diamond links, mounted in 18K white gold, length 36½ inches.

Estimate \$16,000-20,000



119

120



121



120

A Pair of Amethyst, Tzavorite Garnet, and Diamond Ear Pendants MARGHERITA BURGNER

Each suspending a detachable pear-shape amethyst weighing approximately 25.36 carats in total, to the tear-drop shape surmount enhanced by pavé-set tzavorite garnets, diamonds, and amethysts, mounted in 18K white gold, length 2 inches.

Signed 'Margherita Burgener', 'Italy', with a Margherita Burgener box

Estimate \$6,000-8,000

121

PROPERTY OF A LADY

A Pair of Titanium 'Violet' Earclips JAR

Each designed as a sculpted violet blossom, mounted in purple titanium, length 1½ inches.

Signed 'Jar', maker's mark, with an original pouch

Estimate \$2,000-3,000





122

A Baroque Cultured Pearl, Pink Sapphire, and Diamond Suite

Comprising a necklace of twenty baroque cultured pearls, measuring from approximately 21.75 to 26.00 mm, joined by a brushed gold clasp designed as a baroque pearl; a pair of earclips en suite enhanced by vari-cut pink sapphires and diamonds, mounted in 14K white and rose gold, necklace length 18 inches, earclips length 1½ inches.

Estimate \$5,000-7,000

124

A Pink Sapphire and Diamond Ring

Designed as an oval and circular-cut pink sapphire bombé ring, accented with circular-cut diamonds, mounted in 18K rose gold, size 7¾.

Estimate \$4,000-6,000

123

A Pair of Pink Sapphire and Diamond Ear Pendants

Each suspending a bombé plaque set entirely with oval-cut pink sapphires and circular-cut diamonds, from pavé-set diamond links, to the similarly designed surmount, mounted in 18K rose gold, length 2 inches.

Estimate \$7,000-9,000

125

A Pair of Baroque Cultured Pearl, Sapphire, and Pink Sapphire Necklaces

Composed of two necklaces of fifty-four and fifty-seven Tahitian baroque cultured pearls, measuring from approximately 14.80 to 11.00 mm, accented by circular-cut sapphire or pink sapphire links, mounted in 18K blackened gold, length 39½ and 42 inches.

Estimate \$15,000-20,000

123



125



124



126



126

**A Pair of Morganite, Amethyst, and Diamond
Ear Pendants** MARGHERITA BURGNER

Each suspending a detachable pear-shape morganite, weighing approximately 48.55 carats in total, from a cabochon amethyst surmount enhanced by a pavé-set diamond surround, mounted in 18K white gold, length 2¼ inches.

Signed 'Margherita Burgener', 'Italy', with a Margherita Burgener box

Estimate \$5,500-7,500

127



127

A Pair of Gold and Onyx Earclips HENRY DUNAY

Each designed as a series of overlapping crescent-shaped onyx plaques, enhanced by polished gold borders, mounted in 18K yellow gold, length 1½ inch.

Estimate \$1,500-2,500

128



128

A Gold and Enamel Suite DAVID WEBB

Comprising a brooch, designed as a polished gold spiral shell enhanced by black and white enamel stripes; a pair of earclips and ring en suite, mounted in 18K yellow gold, brooch length 1¾ inches, earclips length ¾ inch, ring size 6. Signed 'Webb'

Estimate \$12,000-15,000

131



129

PROPERTY OF A PRIVATE COLLECTOR

A Cultured Pearl and Jet Ring

Of crossover design, set with two South Sea cultured pearls to the carved jet half hoop, mounted in 18K white gold, size 6¾.

Estimate \$1,500-2,500

130

PROPERTY OF A PRIVATE COLLECTOR

A Pair of Cultured Pearl Ear Clips

Each designed as a single South Sea cultured pearl measuring approximately 14.70 mm, mounted in 18K yellow gold, length ½ inch.

Estimate \$1,800-2,500

130



132



131

A Pair of Citrine and Diamond Ear Pendants

MARGHERITA BURGNER

Each designed as a cabochon citrine within a pavé-set diamond surround, suspending a pear-shape citrine drop enhanced by a circular-cut diamond, mounted in 18K yellow gold, length 1¾ inches.

Signed 'Margherita Burgener', 'Italy', with a Margherita Burgener box

Estimate \$2,500-3,500

133



132

PROPERTY OF A PRIVATE COLLECTOR

A Gold, Sapphire, Diamond, and Enamel Lion Bangle Bracelet

KUTCHINSKY 1973

Designed as a textured gold double lion bangle bracelet, enhanced by cabochon-cut sapphire eyes and black enamel nose, to the circular-cut diamond accent along the head, joined by a polished gold clasp, mounted in 18K yellow and white gold, diameter 2¼ inches.

Signed 'Kutchinsky', with British assay marks

Estimate \$9,000-13,000

133

A Pair of Gold Ear Pendants

HENRY DUNAY

Each suspending a fluted, hammered gold drop, from a polished gold spacer link, to the similarly designed surmount, mounted in 18K yellow gold, length 1½ inch.

Estimate \$2,200-3,200

134



134

An Impressive Pair of Tanzanite and Diamond Ear Pendants

Each suspending a tanzanite drop weighing approximately 31.78 carats in total, from a pear-shape diamond surmount weighing approximately 4.04 carats in total, mounted in platinum, length 1¼ inches.

Estimate \$28,000-38,000

135



135

A Multi-Colored Sapphire and Diamond Bracelet

Designed as three rows of multi-color sapphires, weighing approximately 26.31 carats in total, enhanced by pavé-set diamond surrounds and spacer links, mounted in 18K white gold, length 7 inches.

Estimate \$12,000-16,000

136



136

PROPERTY OF A LADY

A Sapphire and Diamond Ring

Centering upon a cushion-cut sapphire weighing approximately 39.20 carats, flanked by baguette and circular-cut diamond shoulders, mounted in platinum, size 7.

Estimate \$12,000-18,000



138



137

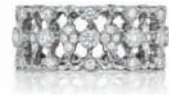


139



140

141



137

A Pair of Aquamarine, Pink Tourmaline, and Diamond Ear Pendants MARGHERITA BURGNER

Each designed as a graduating line of pear-shape aquamarine and pink tourmaline tiers, enhanced by circular-cut diamonds suspended from a pavé-set diamond surmount, mounted in 18K white gold, length 2¾ inches. Signed 'Margherita Burgener', 'Italy', with a Margherita Burgener box

Estimate \$7,000-9,000

138

A Gold and Diamond Cuff BUCCELLATI

Designed as a textured yellow gold hinged cuff, set with circular-cut diamonds within pierced openwork appliques, enhanced by engraved polished gold motifs, mounted in 18K yellow gold, diameter 2¾ inches. Signed 'M.Buccellati'

Estimate \$25,000-35,000

139

A Diamond Bracelet

Designed as a line of alternating circular-cut diamond quatrefoil links, mounted in 18K white gold, length 7 inches.

Estimate \$6,000-8,000

140

A Yellow Diamond and Diamond Bracelet

Designed as a line of cushion-cut yellow diamonds, enhanced by circular-cut diamond surrounds, interspersed by circular-cut diamond links, mounted in 18K white and yellow gold, length 7 inches.

Estimate \$12,000-15,000

141

A Gold and Diamond Band BUCCELLATI

Designed as a pierced open-work band enhanced by pave-set diamonds, mounted in 18K white gold, size 5¾. Signed 'Buccellati'

Estimate \$6,500-9,000



142



142

An Art Nouveau Diamond and Enamel Brooch

CARTIER

Designed as a pink, white, and yellow enamel flowerhead, centering upon a circular-cut diamond; can be worn as a pendant, mounted in 14K yellow gold, length 1½ inches. Signed 'Cartier', no.13669, no.20412

Estimate \$2,200-3,200

143



143

A Diamond and Gold Ring BUCCELLATI

Designed as a pierced openwork band, accented by circular-cut diamonds, centering upon a larger old-cut diamond, with engraved gold borders and bezel, mounted in 18K yellow and white gold, size 6¼. Signed 'M.Buccellati'

Estimate \$12,000-15,000

144



144

A Gold and Silver Thistle Brooch BUCCELLATI

Designed as a spray of two thistles enhanced by textured sepals, stems, and extending three similarly textured leaves, mounted in 18K yellow gold and silver, length 3½ inches. Signed 'M.Buccellati'

Estimate \$2,500-3,500

145

A Diamond, Emerald, and Pearl Necklace

Suspending a kite-shaped emerald weighing approximately 6.61 carats within an old-cut diamond surround, from a stylized ribbon motif plaque centering upon a cultured pearl, and the fancy link back chain set entirely with old-cut diamonds, mounted in silver-topped gold, chain length 16½ inches, pendant length 1¾ inches.

Estimate \$16,000-24,000

146

PROPERTY OF A LADY

A Diamond and Emerald Ring

Of cross-over design, the rectangular-cut diamond and emerald terminals, weighing approximately 2.04 carats and 1.36 carats respectively, each extending to a line of baguette-cut diamonds, mounted in platinum, size 7¾.

Estimate \$11,000-15,000

147

A Diamond Ring Set

Set with a circular-cut diamond, weighing approximately 2.03 carats, framed on either side by tapered baguette-cut diamond shoulders, accompanied by a diamond band of similar design, mounted in platinum, size 6.

With report no.1152894565 dated 29 January 2014 from the Gemological Institute of America, stating that the diamond weighing 2.03 carats is I color and SI1 clarity

Estimate \$14,000-18,000

148

A Natural Pearl and Diamond Ring

Designed as a navette-shape plaque, set entirely with old-cut diamonds, centering upon a natural pearl measuring approximately 7.02mm, mounted in 14K yellow and silver topped gold, size 6¼.

With report no.2155791577 dated 18 December 2013 from the Gemological Institute of America, stating that the pearl is a natural saltwater pearl with no indications of treatment

Estimate \$4,000-6,000



149



149

A Pair of Yellow Diamond and Diamond Ear Pendants

Each designed as a line of cushion-cut yellow diamonds, enhanced by circular-cut diamond surrounds, interspersed by circular-cut diamond links, mounted in 18K white and yellow gold, length 1 $\frac{7}{8}$ inches.

Estimate \$13,000-15,000

150



150

A Fancy Light Yellow Diamond and Diamond Ring

Centering upon a rectangular-cut fancy light yellow diamond weighing approximately 1.52 carats, framed by trapezoid-cut diamond shoulders, enhanced by a circular-cut diamond surround, gallery, and half hoop, mounted in 18K white and yellow gold, size 6 $\frac{3}{4}$.

With report no.2101992009 dated 29 July 2009 from the Gemological Institute of America, stating that the diamond weighing approximately 1.52 carats is Fancy Light Yellow color with VS2 clarity

Estimate \$9,000-11,000

151



151

An Elegant Diamond and Gold Bracelet

VAN CLEEF & ARPELS 1960's

Designed as three lines of foliate links set with circular-cut diamonds, enhanced by textured gold surrounds, mounted in platinum and 18K yellow gold, 7 $\frac{1}{4}$ inches.

Signed 'V.C.&A.', no.34170-8

Estimate \$40,000-60,000

152



153



154



152

A Diamond Necklace

Designed as three lines of graduated circular-cut diamonds, mounted in 18K white gold, length 16¾ inches to 17½ inches.

Estimate \$28,000-35,000

153

A Diamond Ring

Centering upon a circular-cut diamond weighing approximately 4.04 carats, to the circular-cut diamond gallery and half-hoop, mounted in platinum, size 6½.

With report no.17468730 dated 23 July 2008 from the Gemological Institute of America, stating that the diamond weighing 4.04 carats is E color and VVS2 clarity

Estimate \$180,000-200,000

154

PROPERTY OF A LADY

A Pair of Diamond Ear Pendants

Each designed as an articulated line of pear and circular-cut diamonds suspended from a circular-cut diamond quatrefoil surmount, mounted in 18K white gold, length 1¾ inches.

Estimate \$8,000-10,000

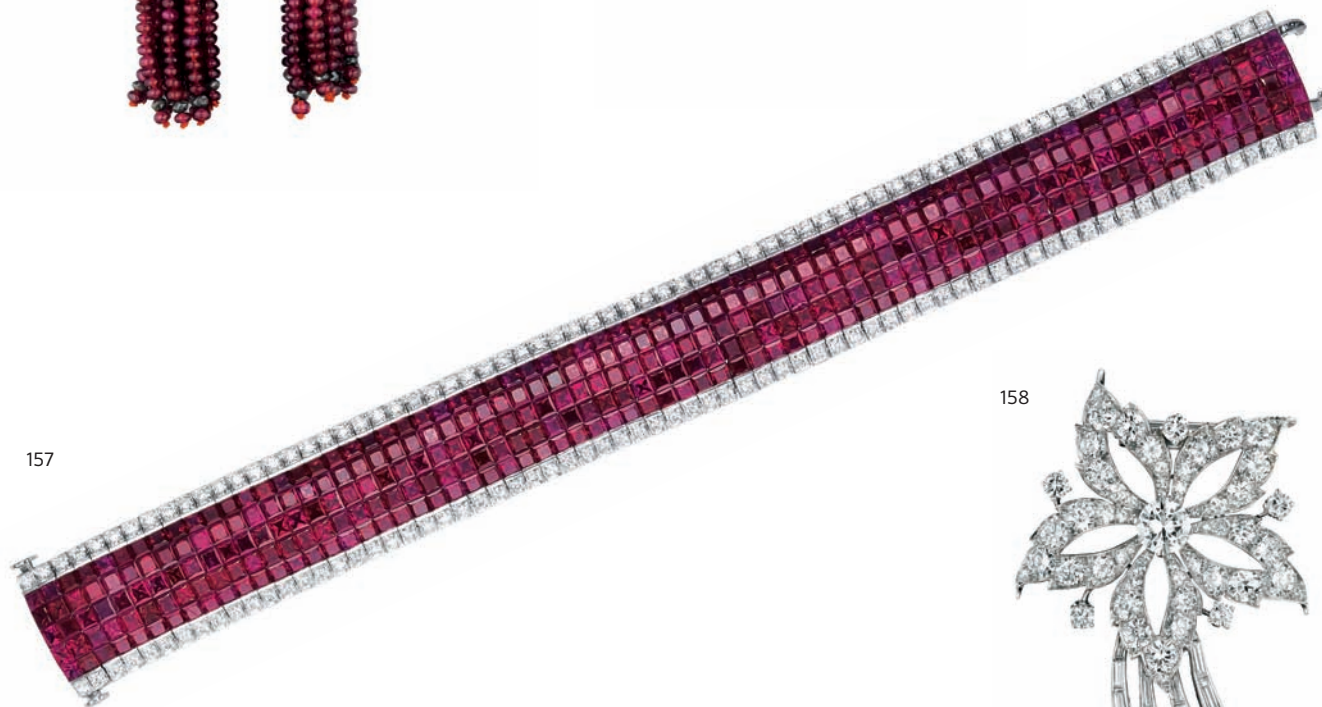
155



156



157



158



155

A Pair of Diamond and Ruby Ear Pendants

Each suspending a detachable tassel of ruby beads, enhanced by a pavé-set diamond cap, from a circular-cut diamond and marquise-cut ruby cluster surmount, mounted in platinum, length 3¼ inches.

Estimate \$8,000-10,000

157

A Ruby and Diamond Bracelet

The flexible band set with a wide line of calibré-cut rubies, bordered by pavé-set diamonds, mounted in 18K white gold, length 7 inches.

Estimate \$15,000-20,000

156

A Pair of Diamond and Ruby Earclips

Each suspending a bombé drop enhanced by pavé-set diamonds and calibré-cut rubies, from a similarly designed pavé-set diamond surmount, mounted in 14K yellow gold, length 1¼ inches.

Estimate \$6,000-8,000

158

A Diamond Brooch VAN CLEEF & ARPELS

Designed as a flower, centering upon a circular-cut diamond, to the petals entirely set with circular-cut diamonds, and the baguette-cut diamond spray, mounted in platinum, length 2¼ inches.

Signed 'V.C.A.' 'NY', no.14722

Estimate \$15,000-20,000



159



159

PROPERTY OF A GENTLEMAN

An Emerald, Diamond, Cultured Pearl, and Ruby Suite

Comprising a necklace designed as a line of cultured pearl and ruby beads, suspending a series of graduated emerald drops enhanced by pavé-set diamond caps, the center drop set within a circular-cut diamond and cultured pearl surround, enhanced by circular-cut diamond and emerald drop fringes; a pair of ear pendants en suite.

Estimate \$38,000-55,000



160



161



162



160

A Pair of Ceylon Sapphire and Diamond Earclips

Each designed as a flowerhead, centering upon an oval-cut sapphire weighing approximately 5.93 carats in total, extending circular-cut diamond petals, mounted in 18K white gold, length 1¼ inches.

With report no.CDC1401066/1&2 dated 05 February 2014 from the C. Dunaigre Laboratory, stating that the sapphires are of Sri Lankan (Ceylon) origin with indications of heating.

Estimate \$15,000-20,000

161

A Pair of Diamond Ear Pendants

Each suspending a circular-cut diamond weighing approximately 2.75 and 2.53 carats, from a pave-set diamond line surmount, mounted in platinum and 18K yellow gold, length 1 inch.

Estimate \$25,000-35,000

162

An Important Unheated Ceylon Sapphire and Diamond Ring

Set to the center with an oval-cut Ceylon sapphire, weighing approximately 13.27 carats, framed on either side by trapeze-cut diamond shoulders, mounted in platinum, size 6. With report no.CS60513 dated 08 May 2014 from the American Gemological Laboratories, stating that the sapphire weighing 13.27 carats is natural with no indications of heat or clarity enhancement

With report no.GRS2013-054210 dated 25 May 2013 from the Gemological Research Lab, stating that the sapphire weighing 13.27 carats is of Sri Lankan origin with no indications of heating

Estimate \$70,000-100,000

163



163

An Important Tanzanite, Diamond, Sapphire, Emerald, and Cultured Pearl Necklace

TIFFANY & CO.

Designed as a cultured pearl torsade, centering upon a pear-shape tanzanite, to the circular-cut diamond surround, enhanced by pear-shaped emeralds and sapphires, mounted in 18K yellow gold and platinum, length 18 inches.

Signed 'Tiffany & Co.', with an original pouch

Estimate \$40,000-60,000

164

A Diamond and Cultured Pearl Ring

Centering upon a South Sea cultured pearl measuring approximately 14.50mm, enhanced by a circular-cut diamond surround, mounted in platinum, size 5¾.

Estimate \$8,000-10,000

164



165



165

An Emerald, Sapphire, and Ruby Brooch

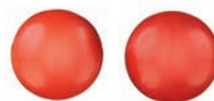
BUCCELLATI

Designed as a floral spray enhanced by cabochon rubies, emeralds and sapphires, and circular-cut rubies, to the textured gold leaves and stem, mounted in 18K yellow gold, length 2¾ inches.

Signed 'Buccellati Italy', with an original pouch

Estimate \$8,000-10,000

166



166

A Pair of Coral Earrings

Each set with a cabochon coral, mounted in 18K yellow gold, length ½ inch.

Estimate \$1,200-2,000

167



167

PROPERTY OF A LADY

A Pair of Gold and Diamond 'Dogwood' Earclips

TIFFANY & CO.

Each designed as a textured gold dogwood blossom centering upon a cluster of circular-cut diamonds, mounted in 18K yellow gold, length 1 inch.

Signed 'Tiffany & Co.'

Estimate \$1,500-2,500

168



168

PROPERTY OF A LADY

A Gold and Cultured Pearl Ring

BUCCELLATI

Designed as a textured gold foliate band centering upon a cultured pearl measuring approximately 16.00 mm, mounted in 18K yellow and white gold, size 6¼.

Signed 'Buccellati Italy', no.C5493

Estimate \$5,000-8,000



169

170

169

A Gold and Diamond Necklace BUCCELLATI

Designed as a highly flexible collar necklace, the tapering line of pierced-openwork textured gold, set with circular-cut diamonds, extending to the concealed clasp, mounted in 18K yellow gold, length 18 inches.
Signed 'M. Buccellati' 'Italy'

Estimate \$80,000-100,000

170

A Pair of Diamond Earclips BUCCELLATI

Each designed as a pierced open-work plaque, enhanced by circular-cut diamonds, mounted in 18K white and yellow gold, length $\frac{7}{8}$ inch.
Signed 'M. Buccellati' 'Italy'

Estimate \$6,000-8,000

171



172



171

A Diamond Necklace/Bracelet

Designed as a flexible contoured necklace set entirely with circular-cut diamonds extending to the two concealed clasps; can be worn as a bracelet, mounted in 18K yellow gold, necklace length 15 inches, bracelet length 8 inches.

Estimate \$60,000-80,000

172

A Fancy Light Yellow Diamond and Diamond Ring

DAVID WEBB

Centrally set with a square-cut fancy light yellow diamond, weighing approximately 5.02 carats, set within a bombé surround set entirely with baguette and circular-cut diamonds, to the polished wirework hoop, mounted in platinum and 18K yellow gold, size 6¼.

With report no.2155138318 dated 17 December 2012 from the Gemological Institute of America, stating that the diamond weighing 5.02 carats is Fancy Light Yellow color and VS1 clarity.

Estimate \$80,000-100,000

173



173

A Diamond Brooch

Centrally set with a cluster of vari-cut diamonds, to the baguette-cut diamond surround and spray, and circular-cut diamond border, mounted in platinum, length 2¼.

Estimate \$17,000-25,000



(illustrated with alternate pearl pendants)

174

An Impressive Pair of Diamond and Emerald or Cultured Pearl Ear Pendants

DAVID WEBB

Each suspending a detachable emerald or Tahitian cultured pearl drop (illustrated with both pendant options), accented by a pear-shape or circular-cut diamond cap, from a line of undulating links enhanced by baguette and circular-cut diamonds, to the similarly designed surmount, mounted in 18K yellow gold, length 3¼ inches.

Signed 'David Webb', no.DS843, with an original pouch and box

Estimate \$100,000-150,000

175



175

PROPERTY OF A LADY

An Elegant Ruby and Diamond Pendant Necklace

Comprising a pendant designed as a graduating series of three oval-cut rubies weighing approximately 8.18 carats in total, within marquise-cut diamond surrounds, accented by a circular-cut diamonds, suspended from a fine link chain enhanced by circular-cut diamonds; mounted in 18K white gold, chain length 15 inches, pendant length 2¾ inches. 1⅞ inches.

Estimate \$40,000-60,000

176



176

An Impressive Pair of 'Les Danses Fantasques Giselle' Diamond Ear Pendants

FABERGÉ

Each of chandelier design set entirely with pear-shape and circular-cut diamonds, suspending five diamond fringes from a scrolling plaque, to the diamond cluster surmount, mounted in platinum, length 2¼ inches.

Signed 'Faberge', no.969-1

With report no.2141481351 dated 23 February 2012 from the Gemological Institute of America, stating that the pear-shape diamond weighing 0.90 carats is F color and VS2 clarity;

With report no.1139140605 dated 22 March 2012 from the Gemological Institute of America, stating that the pear-shape diamond weighing 0.90 carats is E color and VS1 clarity;

With report no.2116443443 dated 06 September 2010 from the Gemological Institute of America, stating that the pear-shape diamond weighing 0.51 carats is F color and VS2 clarity

Estimate \$55,000-70,000

177



177

An Important Diamond Ring

Centering upon an oval-cut diamond weighing 5.17 carats, to the heart motif shoulders enhanced by pavé-set diamonds accented by a circular-cut diamond, to the scrolling pavé-set diamond hoop, mounted in 18K white gold, size 6¼.

With report no.15052905 dated 05 June 2006 from the Gemological Institute of America, stating that the diamond weighing 5.17 carats is G color and INTERNALLY FLAWLESS clarity

Estimate \$150,000-200,000

178



178

**An Impressive 'Les Danses Fantasques Giselle'
Diamond Necklace** FABERGÉ

Designed as a scrolling plaque set with pear and circular-cut diamonds suspending five fringes of pear and circular-cut diamonds, to the diamond link back chain, mounted in platinum, chain length 18¾ inches, pendant length 2¼ inches. Signed 'Faberge', no.969-1

With report no.1139158645 dated 30 March 2012 from the Gemological Institute of America, stating that the pear-shape diamond weighing 0.91 carats is D color and VS2 clarity

Estimate \$80,000-100,000

179



180



181



182



179

A Pair of Gold and Diamond Earclips

BUCCELLATI

Each designed as a bombé textured gold plaque enhanced by circular-cut diamonds within engraved motifs, mounted in 18K yellow and white gold, length $\frac{7}{8}$ inch.

Signed 'M.Buccellati'

Estimate \$5,000-8,000

181

A Gold and Sapphire Cuff Bracelet BUCCELLATI

Designed as a textured gold cuff, enhanced by a textured gold border, centering upon a line of calibré-cut sapphires set within textured gold appliqués, mounted in 18K white and yellow gold, diameter $2\frac{1}{4}$ inches.

Signed 'Buccellati', with an original fitted box

Estimate \$8,000-10,000

180

A Unique Diamond Ring BUCCELLATI

Centering upon a circular-cut diamond weighing approximately 8.00 carats, within a bombé pierced open-work surround, enhanced by circular-cut diamonds, mounted in 18K white and yellow gold, size 6.

Signed 'Buccellati Italy'

Estimate \$90,000-140,000

182

An Important Pair of Diamond Ear Pendants

Each designed as a rose-cut diamond surmount within a pavé-set diamond surround, suspending a detachable drop of oval, circular, and pear-shape rose-cut diamonds, enhanced by circular-cut surrounds and spacer links, mounted in 18K white gold, length $1\frac{1}{4}$ inches.

Estimate \$5,000-7,000



183



184



185



183

An Impressive Pair of Emerald and Diamond Ear Pendants

Each suspending an emerald drop weighing approximately 28.06 carats in total, from marquise-cut and heart-shape diamond spacer links, to the circular-cut diamond cluster surmount, mounted in platinum, length 2½ inches.

With report no.1156701738 dated 22 October 2013 from the Gemological Institute of America, stating that the marquise-cut diamond weighing 1.00 carat is I color, VS2 clarity;

With report no.2141798276 dated 29 June 2012 from the Gemological Institute of America, stating that the marquise-cut diamond weighing 1.03 carats is I color, VS2 clarity;

With report no.2156146153 dated 13 June 2013 from the Gemological Institute of America, stating that the heart-shape diamond weighing 1.00 carat is H color, VS2 clarity;

With report no.2151343363 dated 02 April 2013 from the Gemological Institute of America, stating that the heart-shape diamond weighing 1.00 carat is I color, VS2 clarity;

With report no.CDC1308345/1&2 dated 26 August 2013 from the C. Dunaigre Laboratory, stating that the emeralds weighing 28.06 carats in total is of Zambian origin with indications of minor clarity enhancement

Estimate \$75,000-100,000

184

An Important Diamond Eternity Band

Of thirteen square-cut diamonds, mounted in 18K white gold, size 6.

With thirteen reports from the Gemological Institute of America, stating that the diamonds range from F-G-H-I color, IF-VVS1-VVS2-VS2-SI clarity

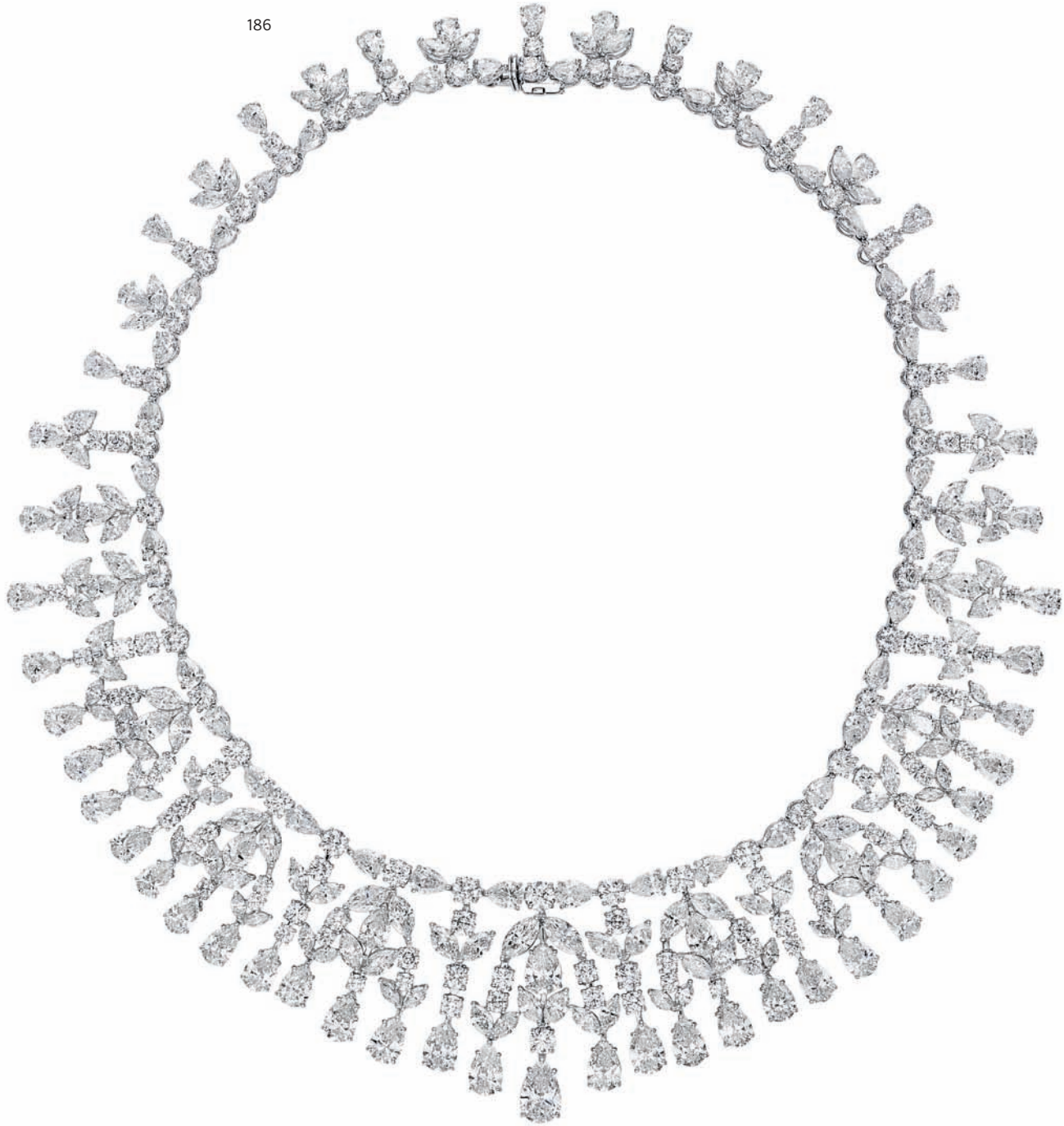
Estimate \$32,000-42,000

185

An Emerald and Diamond Ring

Centrally set with a cushion-cut emerald, weighing approximately 6.90 carats, within a vari-cut diamond frame, to the bombé shoulders enhanced by circular-cut diamonds, mounted in platinum, size 6.

Estimate \$20,000-30,000



186

A Magnificent Diamond Necklace

Designed as a graduated series of pear-shaped, marquise and circular-cut diamond fringes, suspended from a circular and marquise-cut diamond line extending to the clasp, mounted in 18K white gold, length 16 inches.

With report no.5146734990 dated 11 March 2013 from the Gemological Institute of America, stating that the pear-shape diamond weighing 1.51 carats is G color and INTERNALLY FLAWLESS clarity.

Estimate \$170,000-250,000

187



189



187

An Important Pair of Diamond Ear Pendants

Each designed as a series of cascading circular-cut and pear-shaped diamonds weighing approximately 12.23 carats in total, to the pear-shaped diamond surmount, mounted in platinum, length 1½ inches.

With sixteen reports from the Gemological Institute of America, stating that the diamonds range from D-F-G-H-I color, IF-VVS1-VS1-VS2-SI1

Estimate \$25,000-35,000

188



189

A Set of Diamond Bangle Bracelets

Each designed as a hinged bombé bangle, entirely set with pavé-set diamonds, mounted in 18K white gold, diameter 2 ¾ inches.

Estimate \$40,000-60,000

188

A Diamond and Gold Ring MARGHERITA BURGNER

Designed as a wide band, the front set with circular-cut diamonds, to the polished gold half hoop, mounted in 18K white gold, size 7.

Signed 'Margherita Burgener', 'Italy', with a Margherita Burgener box

Estimate \$5,000-7,000



190

191

190

An Important Emerald and Diamond Necklace

Centering upon a series of rectangular-cut emeralds weighing approximately 19.25 carats in total, within vari-cut diamond surrounds, interspersed by marquise-cut diamond florets, to the circular-cut diamond back chain and clasp enhanced by a rectangular-cut emerald, mounted in 18K white gold, length 16½ inches.

Please inquire with the Jewelry department for certificate information

Estimate \$75,000-100,000

191

An Impressive Diamond Ring

Centering upon a circular-cut diamond weighing approximately 6.22 carats, to the pavé-set diamond gallery and half hoop, mounted in platinum, size 8.

With report no.2135411045 dated 14 May 2013 from the Gemological Institute of America, stating that the diamond weighing 6.22 carats is G color and VS1 clarity

Estimate \$170,000-250,000

192



193



194



192

PROPERTY OF A LADY

An Elegant Pair of Diamond Earclips

Each designed as a flower, centering upon a cluster of circular-cut diamonds, to the marquise-cut diamond petals, mounted in 18K white gold, length 1¼ inches.

Estimate \$35,000-50,000

193

PROPERTY OF A PRIVATE COLLECTOR

A Superb Colombian Emerald and Diamond Ring

Centering upon a square-cut Colombian emerald weighing approximately 35.70 carats, framed by triangular-cut diamond shoulders, mounted in 18K white gold, size 7¾.

With report no.14055113 dated 12 May 2014 from the Gübelin Gem Lab, stating that the emerald weighing approximately 35.70 carats is of Colombian origin with indications of minor clarity enhancement

Estimate \$250,000-350,000

194

An Impressive Set of Diamond and Yellow Sapphire Bangle Bracelets

Each designed as a hinged bombé bangle, entirely set with circular-cut yellow sapphires or rose-cut diamonds weighing approximately 41.45 carats and 22.46 carats in total respectively, mounted in 18K yellow and white gold, diameter 2¼ inches.

Estimate \$22,000-32,000



195



196



197



195

An Elegant Pair of Diamond Ear Pendants

Of articulated design, each suspending a pavé-set diamond kite-shape plaque centering upon a square-cut diamond weighing approximately 6.03 carats in total, from a pavé-set diamond line and similarly designed surmount, mounted in platinum, length 1¾ inches.

With report no.5146351474 dated 27 November 2012 from the Gemological Institute of America, stating that the diamond weighing 0.71 carats is D color and SI1 clarity;

With report no.2146083943 dated 13 October 2012 from the Gemological Institute of America, stating that the diamond weighing 0.70 carats is E color and SI1 clarity;

With report no.2146339616 dated 30 November 2012 from the Gemological Institute of America, stating that the diamond weighing 3.01 carats is G color and VVS1 clarity;

With report no.2135364488 dated 08 July 2011 from the Gemological Institute of America, stating that the diamond weighing 3.02 carats is G color and INTERNALLY FLAWLESS clarity

Estimate \$90,000-140,000

196

A Diamond Ring

Set with a rectangular-cut diamond, weighing approximately 5.01 carats, framed on either side by baguette-cut diamond shoulders, mounted in 14K white gold, size 7½.

With report no.5151267941 dated 15 February 2013 from the Gemological Institute of America, stating that the diamond weighing 5.01 carats is E color and VVS2 clarity.

Estimate \$170,000-220,000

197

A Set of Diamond Bangle Bracelets

Each designed as a bangle, set throughout with baguette-cut diamonds, to the pavé-set diamond border, mounted in 18K yellow, white, or rose gold, diameter 2½ inches.

Estimate \$25,000-35,000



198



199



198

A Superb Pair of Fancy Yellow Diamond, Pink Diamond, and Diamond Earclips

ALEXANDER REZA

Each centering upon a square-cut fancy yellow diamond, weighing approximately 11.09 and 10.50 carats in total, within a swirling loop surround set entirely with circular-cut diamonds and pink diamonds, mounted in 18K yellow gold, length 1½ inches.

Signed 'A. Reza,' and stamped with maker's mark

With report no.10649275 dated 14 June 1999 from the Gemological Institute of America, stating that the diamond weighing 11.09 carats is Natural Fancy Yellow color, SI1 clarity

With report no.10542618 dated 11 December 1998 from the Gemological Institute of America, stating that the diamond weighing 10.50 carats is Natural Fancy Yellow color, SI1 clarity

Estimate \$320,000-400,000

199

A Magnificent Fancy Yellow Diamond and Diamond Ring

CARTIER

Set with a rectangular-cut fancy yellow diamond, weighing approximately 9.55 carats, framed on either side by trapezoid-cut diamond shoulders, mounted in platinum and 18K yellow gold, size 6.

Signed 'Cartier', no.889094

With report no.11332026 dated 23 October 2000 from the Gemological Institute of America, stating that the diamond weighing 9.55 carats is Fancy Yellow color and VS2 clarity

Estimate \$180,000-250,000



200



200

A Magnificent Diamond Ring FABERGÉ

Centering upon a pear-shape Type IIA diamond weighing approximately 13.21 carats, to the split pavé-set diamond shoulders and hoop, mounted in 18K white gold, size 5¾.

With report no.17426101 dated 12 June 2008 from the Gemological Institute of America, stating that the diamond weighing 13.21 carats is D color with VS1 clarity, with an appendix stating that the optical properties of this diamond are those of the finest Type IIA diamonds

Diamonds of this type and size exhibiting superior quality are very rare. Such diamonds have been unearthed from only a limited number of sources from around the world (e.g., South Africa, Brazil, Russia, and India).

This beautiful stone is a member of the rare Type IIA Group of Diamonds which are known for their extreme purity and limpidity, qualities compared so often throughout history to pure crystallized water, scientifically this purity is due to the absence of nitrogen.

Estimate \$1,500,000-2,000,000



201



201

An Exquisite Diamond Necklace

Designed as a graduated series of forty-one circular-cut diamonds weighing approximately 68.47 carats in total, suspending a circular-cut diamond weighing 8.59 carats, mounted in platinum, length 17¼ inches.

With forty-one total reports from the Gemological Institute of America, stating that the diamonds range from D-E-F color, IF-VVS2-VS1-VS2

With report no.2155991972 dated 02 April 2014 from the Gemological Institute of America, stating that the diamond weighing 8.59 carats is E color and VVS2 clarity

Estimate \$1,500,000-2,000,000



GUIDE FOR PROSPECTIVE BUYERS

BUYING AT AUCTION

The following pages are designed to offer you information on how to buy at auction at Phillips. Our staff will be happy to assist you.

CONDITIONS OF SALE

The Conditions of Sale and Authorship Warranty which appear later in this catalogue govern the auction. Bidders are strongly encouraged to read them as they outline the legal relationship among Phillips, the seller and the buyer and describe the terms upon which property is bought at auction. Please be advised that Phillips generally acts as agent for the seller.

BUYER'S PREMIUM

Phillips charges the successful bidder a commission, or buyer's premium, on the hammer price of each lot sold. The buyer's premium is payable by the buyer as part of the total purchase price at the following rates: 25% of the hammer price up to and including \$100,000, 20% of the portion of the hammer price above \$100,000 up to and including \$2,000,000 and 12% of the portion of the hammer price above \$2,000,000.

1 PRIOR TO AUCTION

Catalogue Subscriptions

If you would like to purchase a catalogue for this auction or any other Phillips sale, please contact us at +1 212 940 1240 or +44 20 7318 4010.

Pre-Sale Estimates

Pre-sale estimates are intended as a guide for prospective buyers. Any bid within the high and low estimate range should, in our opinion, offer a chance of success. However, many lots achieve prices below or above the pre-sale estimates. Where "Estimate on Request" appears, please contact the specialist department for further information. It is advisable to contact us closer to the time of the auction as estimates can be subject to revision. Pre-sale estimates do not include the buyer's premium or any applicable taxes.

Pre-Sale Estimates in Pounds Sterling and Euros

Although the sale is conducted in US dollars, the pre-sale estimates in the auction catalogues may also be printed in pounds sterling and/or euros. Since the exchange rate is that at the time of catalogue production and not at the date of auction, you should treat estimates in pounds sterling or euros as a guide only.

Catalogue Entries

Phillips may print in the catalogue entry the history of ownership of a work of art, as well as the exhibition history of the property and references to the work in art publications. While we are careful in the cataloguing process, provenance, exhibition and literature references may not be exhaustive and in some cases we may intentionally refrain from disclosing the identity of previous owners. Please note that all dimensions of the property set forth in the catalogue entry are approximate.

Condition of Lots

Our catalogues include references to condition only in the descriptions of multiple works (e.g., prints). Such references, though, do not amount to a full description of condition. The absence of reference to the condition of a lot in the catalogue entry does not imply that the lot is free from faults or imperfections. Solely as a convenience to clients, Phillips may provide condition reports. In preparing such reports, our specialists assess the condition in a manner appropriate to the estimated value of the property and the nature of the auction in which it is included. While condition reports are prepared honestly and carefully, our staff are not professional restorers or trained conservators. We therefore encourage all prospective buyers to inspect the property at the pre-sale exhibitions and recommend, particularly in the case of any lot of significant value, that you retain your own restorer or professional advisor to report to you on the property's condition prior to bidding. Any prospective buyer of photographs or prints should always request a condition report because all such property is sold unframed, unless otherwise indicated in the condition report. If a lot is sold framed, Phillips accepts no liability for the condition of the frame. If we sell any lot unframed, we will be pleased to refer the purchaser to a professional framer.

Pre-Auction Viewing

Pre-auction viewings are open to the public and free of charge. Our specialists are available to give advice and condition reports at viewings or by appointment.

Electrical and Mechanical Lots

All lots with electrical and/or mechanical features are sold on the basis of their decorative value only and should not be assumed to be operative. It is essential that, prior to any intended use, the electrical system is verified and approved by a qualified electrician.

Symbol Key

The following key explains the symbols you may see inside this catalogue.

○ **Guaranteed Property**

The seller of lots with this symbol has been guaranteed a minimum price. The guarantee may be provided by Phillips, by a third party or jointly by us and a third party. When a third party has financed all or part of our financial interest in a lot, it assumes all or part of the risk that the lot will not be sold and will be remunerated accordingly. The third party may bid on the guaranteed lot during the auction. If the third party is the successful bidder, the remuneration may be netted against the final purchase price. If the lot is not sold, the third party may incur a loss.

△ **Property in Which Phillips Has an Ownership Interest**

Lots with this symbol indicate that Phillips owns the lot in whole or in part or has an economic interest in the lot equivalent to an ownership interest.

● **No Reserve**

Unless indicated by a *, all lots in this catalogue are offered subject to a reserve. A reserve is the confidential value established between Phillips and the seller and below which a lot may not be sold. The reserve for each lot is generally set at a percentage of the low estimate and will not exceed the low pre-sale estimate.

Σ **Endangered Species**

Lots with this symbol have been identified at the time of cataloguing as containing endangered or other protected species of wildlife which may be subject to restrictions regarding export or import and which may require permits for export as well as import. Please refer to Paragraph 4 of the Guide for Prospective Buyers and Paragraph 11 of the Conditions of Sale.

2 BIDDING IN THE SALE

Bidding at Auction

Bids may be executed during the auction in person by paddle, by telephone, online or prior to the sale in writing by absentee bid. Proof of identity in the form of government issued identification will be required, as will an original signature. We may also require that you furnish us with a bank reference.

Bidding in Person

To bid in person, you will need to register for and collect a paddle before the auction begins. New clients are encouraged to register at least 48 hours in advance of a sale to allow sufficient time for us to process your information. All lots sold will be invoiced to the name and address to which the paddle has been registered and invoices cannot be transferred to other names and addresses. Please do not misplace your paddle. In the event you lose it, inform a Phillips staff member immediately. At the end of the auction, please return your paddle to the registration desk.

Bidding by Telephone

If you cannot attend the auction, you may bid live on the telephone with one of our multi-lingual staff members. This service must be arranged at least 24 hours in advance of the sale and is available for lots whose low pre-sale estimate is at least \$1,000. Telephone bids may be recorded. By bidding on the telephone, you consent to the recording of your conversation. We suggest that you leave a maximum bid, excluding the buyer's premium and any applicable taxes, which we can execute on your behalf in the event we are unable to reach you by telephone.

Online Bidding

If you cannot attend the auction in person, you may bid online on our online live bidding platform available on our website at www.phillips.com (Flash plugin is required). You must pre-register by clicking on 'Buy' in the drop-down menu under the 'Buy and Sell' button on the Home Page, then click on 'pre-register' under 'ONLINE LIVE BIDDING.' You must pre-register at least 24 hours before the start of the auction in order to be approved by our bid department. Please note that corporate firewalls may cause difficulties for online bidders.

Absentee Bids

If you are unable to attend the auction and cannot participate by telephone, Phillips will be happy to execute written bids on your behalf. A bidding form can be found at the back of this catalogue. This service is free and confidential. Bids must be placed in the currency of the sale. Our staff will attempt to execute an absentee bid at the lowest possible price taking into account the reserve and other bidders. Always indicate a maximum bid, excluding the buyer's premium and any applicable taxes. Unlimited bids will not be accepted. Any absentee bid must be received at least 24 hours in advance of the sale. In the event of identical bids, the earliest bid received will take precedence.

Employee Bidding

Employees of Phillips and our affiliated companies, including the auctioneer, may bid at the auction by placing absentee bids so long as they do not know the reserve when submitting their absentee bids and otherwise comply with our employee bidding procedures.

Bidding Increments

Bidding generally opens below the low estimate and advances in increments of up to 10%, subject to the auctioneer’s discretion. Absentee bids that do not conform to the increments set below may be lowered to the next bidding increment.

| | |
|------------------------|---|
| \$50 to \$1,000 | by \$50s |
| \$1,000 to \$2,000 | by \$100s |
| \$2,000 to \$3,000 | by \$200s |
| \$3,000 to \$5,000 | by \$200s, 500, 800 (i.e., \$4,200, 4,500, 4,800) |
| \$5,000 to \$10,000 | by \$500s |
| \$10,000 to \$20,000 | by \$1,000s |
| \$20,000 to \$30,000 | by \$2,000s |
| \$30,000 to \$50,000 | by \$2,000s, 5,000, 8,000 |
| \$50,000 to \$100,000 | by \$5,000s |
| \$100,000 to \$200,000 | by \$10,000s |
| above \$200,000 | auctioneer’s discretion |

The auctioneer may vary the increments during the course of the auction at his or her own discretion.

3 THE AUCTION

Conditions of Sale

As noted above, the auction is governed by the Conditions of Sale and Authorship Warranty. All prospective bidders should read them carefully. They may be amended by saleroom addendum or auctioneer’s announcement.

Interested Parties Announcement

In situations where a person allowed to bid on a lot has a direct or indirect interest in such lot, such as the beneficiary or executor of an estate selling the lot, a joint owner of the lot or a party providing or participating in a guarantee on the lot, Phillips will make an announcement in the saleroom that interested parties may bid on the lot.

Consecutive and Responsive Bidding; No Reserve Lots

The auctioneer may open the bidding on any lot by placing a bid on behalf of the seller. The auctioneer may further bid on behalf of the seller up to the amount of the reserve by placing consecutive bids or bids in response to other bidders. If a lot is offered without reserve, unless there are already competing absentee bids, the auctioneer will generally open the bidding at 50% of the lot’s low pre-sale estimate. In the absence of a bid at that level, the auctioneer will proceed backwards at his or her discretion until a bid is recognized and will then advance the bidding from that amount. Absentee bids on no reserve lots will, in the absence of a higher bid, be executed at approximately 50% of the low pre-sale estimate or at the amount of the bid if it is less than 50% of the low pre-sale estimate. If there is no bid whatsoever on a no reserve lot, the auctioneer may deem such lot unsold.

4 AFTER THE AUCTION

Payment

Buyers are required to pay for purchases immediately following the auction unless other arrangements are agreed with Phillips in writing in advance of the sale. Payment must be made in US dollars either by cash, check drawn on a US bank or wire transfer, as noted in Paragraph 6 of the Conditions of Sale. It is our corporate policy not to make or accept single or multiple payments in cash or cash equivalents in excess of US\$10,000.

Credit Cards

As a courtesy to clients, Phillips will accept American Express, Visa and Mastercard to pay for invoices of \$100,000 or less. A processing fee will apply.

Collection

It is our policy to request proof of identity on collection of a lot. A lot will be released to the buyer or the buyer’s authorized representative when Phillips has received full and cleared payment and we are not owed any other amount by the buyer. Promptly after the auction, we will transfer all lots to our warehouse located at 29-09 37th Avenue in Long Island City, Queens, New York. All purchased lots should be collected at this location during our regular weekday business hours. As a courtesy to clients, we will upon request transfer purchased lots suitable for hand carry back to our premises at 450 Park Avenue, New York, New York for collection within 30 days following the date of the auction. We will levy removal, interest, storage and handling charges on uncollected lots.

Loss or Damage

Buyers are reminded that Phillips accepts liability for loss or damage to lots for a maximum of seven days following the auction.

Transport and Shipping

As a free service for buyers, Phillips will wrap purchased lots for hand carry only. We will, at the buyer’s expense, either provide packing, handling and shipping services or coordinate with shipping agents instructed by the buyer in order to facilitate such services for property purchased at Phillips. Please refer to Paragraph 7 of the Conditions of Sale for more information.

Export and Import Licenses

Before bidding for any property, prospective bidders are advised to make independent inquiries as to whether a license is required to export the property from the United States or to import it into another country. It is the buyer’s sole responsibility to comply with all import and export laws and to obtain any necessary licenses or permits. The denial of any required license or permit or any delay in obtaining such documentation will not justify the cancellation of the sale or any delay in making full payment for the lot.

IMPORTANT NOTICES FOR PROSPECTIVE BUYERS OF JEWELRY AND WATCHES

Catalogue Entries

Phillips may print in the catalogue entry the history of ownership of a work included in the auction, as well as the exhibition history of the property and references to the work in art publications. While we are careful in the cataloguing process, provenance, exhibition and literature references may not be exhaustive and in some cases we may intentionally refrain from disclosing the identity of previous owners. Please note that all weights set forth in the catalogue entry are approximate, whether or not qualified by the terms “stated to be” or “approximately.” Catalogue illustrations are rarely actual size and cannot be used as precise indications of size or weight.

Colored Gemstones

Clients are advised that many colored gemstones are treated to enhance their properties. For example, heating is commonly used to improve the color or transparency of rubies and sapphires; oiling is commonly used to enhance the clarity of emeralds. Such enhancement procedures are widely accepted by the international jewelry profession. While heat enhancement of color is generally believed to be permanent, the process may impact the durability of the gemstone and special care of the stone may be required over time. Gemstones which have been oiled may need to be re-oiled after a period of years to retain their maximum clarity.

Gemological Reports

As a matter of policy, Phillips will obtain gemological reports from officially recognized laboratories for certain gemstones offered for sale. A summary of these reports is included in the catalogue description for a lot, and a copy of the report is available upon request. Reports from American gemological laboratories used by Phillips will generally disclose heat enhancement or treatment of colored gemstones. European gemological laboratory reports will disclose heat enhancement only if specifically requested but will generally confirm when no heat enhancement or treatment has been made. Variations in approach and technology used by different gemological laboratories may result in a lack of consensus among reports as to whether any particular gemstone has been treated, the extent of treatment and whether treatment is permanent.

It is not feasible for Phillips to obtain such reports for all gemstones offered at auction. Prospective buyers should, therefore, bear in mind that colored gemstones offered for sale without a gemological report or a specific statement in the catalogue entry may have been treated to enhance color, transparency or clarity. Enhancement of colored gemstones may affect market value, and our pre-sale estimates reflect the assumption that any colored gemstone not described in the catalogue entry as natural may have been treated.

Country of Origin

While Phillips attempts to obtain accurate information on the country of origin of gemstones, we do not guarantee the correctness of the catalogue or other descriptions of gemstones including country of origin.

Burmese Stones

Clients are advised that rubies and jadeite originating in Burma (Myanmar) and articles of jewelry less than 100 years old which contain Burmese rubies or jadeite may not be imported into the United States or the European Union. Lots marked with ♦ contain rubies or jadeite of Burmese or unknown origin that may be subject to these restrictions.

Please note that items containing any other types of gemstones originating in Burma (e.g., sapphires) may be imported into the US or the EU provided that (a) the gemstones have been mounted or incorporated into jewelry outside of Burma and (b) the setting is not of a temporary nature. Loose gemstones of any type originating in Burma may not be imported into the US or the EU.

A purchaser's inability to import any such item into the US or the EU shall not constitute grounds for non-payment or cancellation of the sale.

Endangered Species

Items made of or incorporating plant or animal material, such as coral, crocodile, ivory, whalebone, rhinoceros horn or tortoiseshell, irrespective of age, percentage or value, may require a license or certificate (e.g., a CITES permit) prior to exportation and additional licenses or certificates upon importation to any foreign country. Some countries prohibit altogether the importation of property containing such material. Lots marked with ♦ contain such material. Please note that the ability to obtain an export license or certificate does not ensure the ability to obtain an import license or certificate in another country, and vice versa.

We strongly suggest that prospective bidders check with their own government regarding wildlife and endangered species import requirements prior to placing a bid. It is the buyer's sole responsibility to obtain any necessary export or import licenses or certificates as well as any other required documentation. The denial of any required license or certificate or any delay in obtaining such documentation shall not constitute grounds for cancellation of the sale or any delay in making full payment for the lot. Please note that while we have, as a convenience to our clients, identified with ♦ lots containing potentially regulated plant or animal material, Phillips does not accept liability for errors or for failing to mark lots containing protected or regulated species.

Watches

Phillips makes no representation or warranty that any watch is in working order, and no catalogue description of any lot should be construed as so stating. Prospective buyers are advised to have watches checked by a competent watchmaker before use. As a service to prospective buyers, we may provide a description of the condition of watches in the catalogue entry, including references to defects and repairs, and furnish a condition report, but such information is not necessarily complete and may not specify all mechanical replacements, restorations or defects. Please note that Phillips does not guarantee the authenticity of any individual component parts, such as wheels, hands, crowns, crystals, screws, bracelets and leather bands, since prior repairs and restoration work may have resulted in the replacement of original parts. Nor does Phillips warrant that watches in water-resistant cases are currently water-resistant. Prospective buyers should inspect all watches prior to the auction to evaluate the condition of property offered for sale.

Importation of Watches Into the United States

Prospecting buyers should be aware that the importation of luxury watches such as Rolex into the United States is highly restricted. These watches (not limited to Rolex) may not be shipped into the US and may only be imported personally. US customs regulations generally limit the importation of luxury watches to one per buyer. Lots marked with ▼ are subject to these restrictions. A purchaser's inability to import a luxury watch into the United States or Phillips's failure to mark a lot with ▼ shall not constitute grounds for non-payment or cancellation of the sale.

Exportation of Watch Bands Incorporating Material from Endangered Species

Some of the watches offered for sale in this catalogue may have bands made of endangered or protected animal materials such as alligator or crocodile and may not lawfully be exported from the auction site without a CITES export permit. As explained above, these lots are marked with ♦ in the catalogue. Accordingly, for purchased watches that are to be shipped out of the sale site for delivery, Phillips may need to remove and retain the band before shipping the watch and buckle.

CONDITIONS OF SALE

The Conditions of Sale and Authorship Warranty set forth below govern the relationship between bidders and buyers, on the one hand, and Phillips and sellers, on the other hand. All prospective buyers should read these Conditions of Sale and Authorship Warranty carefully before bidding.

1 INTRODUCTION

Each lot in this catalogue is offered for sale and sold subject to: (a) the Conditions of Sale and Authorship Warranty; (b) additional notices and terms printed in other places in this catalogue, including the Guide for Prospective Buyers, and (c) supplements to this catalogue or other written material posted by Phillips in the saleroom, in each case as amended by any addendum or announcement by the auctioneer prior to the auction.

By bidding at the auction, whether in person, through an agent, by written bid, by telephone bid or other means, bidders and buyers agree to be bound by these Conditions of Sale, as so changed or supplemented, and Authorship Warranty.

These Conditions of Sale, as so changed or supplemented, and Authorship Warranty contain all the terms on which Phillips and the seller contract with the buyer.

2 PHILLIPS AS AGENT

Phillips acts as an agent for the seller, unless otherwise indicated in this catalogue or at the time of auction. On occasion, Phillips may own a lot directly, in which case we will act in a principal capacity as a consignor, or a company affiliated with Phillips may own a lot, in which case we will act as agent for that company, or Phillips or an affiliated company may have a legal, beneficial or financial interest in a lot as a secured creditor or otherwise.

3 CATALOGUE DESCRIPTIONS AND CONDITION OF PROPERTY

Lots are sold subject to the Authorship Warranty, as described in the catalogue (unless such description is changed or supplemented, as provided in Paragraph 1 above) and in the condition that they are in at the time of the sale on the following basis.

(a) The knowledge of Phillips in relation to each lot is partially dependent on information provided to us by the seller, and Phillips is not able to and does not carry out exhaustive due diligence on each lot. Prospective buyers acknowledge this fact and accept responsibility for carrying out inspections and investigations to satisfy themselves as to the lots in which they may be interested. Notwithstanding the foregoing, we shall exercise such reasonable care when making express statements in catalogue descriptions or condition reports as is consistent with our role as auctioneer of lots in this sale and in light of (i) the information provided to us by the seller, (ii) scholarship and technical knowledge and (iii) the generally accepted opinions of relevant experts, in each case at the time any such express statement is made.

(b) Each lot offered for sale at Phillips is available for inspection by prospective buyers prior to the auction. Phillips accepts bids on lots on the basis that bidders (and independent experts on their behalf, to the extent appropriate given the nature and value of the lot and the bidder's own expertise) have fully inspected the lot prior to bidding and have satisfied themselves as to both the condition of the lot and the accuracy of its description.

(c) Prospective buyers acknowledge that many lots are of an age and type which means that they are not in perfect condition. As a courtesy to clients, Phillips may prepare and provide condition reports to assist prospective buyers when they are inspecting lots. Catalogue descriptions and condition reports may make reference to particular imperfections of a lot, but bidders should note that lots may have other faults not expressly referred to in the catalogue or condition report. All dimensions are approximate. Illustrations are for identification purposes only and cannot be used as precise indications of size or to convey full information as to the actual condition of lots.

(d) Information provided to prospective buyers in respect of any lot, including any pre-sale estimate, whether written or oral, and information in any catalogue, condition or other report, commentary or valuation, is not a representation of fact but rather a statement of opinion held by Phillips. Any pre-sale estimate may not be relied on as a prediction of the selling price or value of the lot and may be revised from time to time by Phillips in our absolute discretion. Neither Phillips nor any of our affiliated companies shall be liable for any difference between the pre-sale estimates for any lot and the actual price achieved at auction or upon resale.

4 BIDDING AT AUCTION

(a) Phillips has absolute discretion to refuse admission to the auction or participation in the sale. All bidders must register for a paddle prior to bidding, supplying such information and references as required by Phillips.

(b) As a convenience to bidders who cannot attend the auction in person, Phillips may, if so instructed by the bidder, execute written absentee bids on a bidder's behalf. Absentee bidders are required to submit bids on the Absentee Bid Form, a copy of which is printed in this catalogue or otherwise available from Phillips. Bids must be placed in the currency

of the sale. The bidder must clearly indicate the maximum amount he or she intends to bid, excluding the buyer's premium and any applicable sales or use taxes. The auctioneer will not accept an instruction to execute an absentee bid which does not indicate such maximum bid. Our staff will attempt to execute an absentee bid at the lowest possible price taking into account the reserve and other bidders. Any absentee bid must be received at least 24 hours in advance of the sale. In the event of identical bids, the earliest bid received will take precedence.

(c) Telephone bidders are required to submit bids on the Telephone Bid Form, a copy of which is printed in this catalogue or otherwise available from Phillips. Telephone bidding is available for lots whose low pre-sale estimate is at least \$1,000. Phillips reserves the right to require written confirmation of a successful bid from a telephone bidder by fax or otherwise immediately after such bid is accepted by the auctioneer. Telephone bids may be recorded and, by bidding on the telephone, a bidder consents to the recording of the conversation.

(d) Bidders may participate in an auction by bidding online through Phillips's online live bidding platform available on our website at www.phillips.com. To bid online, bidders must register online at least 24 hours before the start of the auction. Online bidding is subject to approval by Phillips's bid department in our sole discretion. As noted in Paragraph 3 above, Phillips encourages online bidders to inspect prior to the auction any lot(s) on which they may bid, and condition reports are available upon request. Bidding in a live auction can progress quickly. To ensure that online bidders are not placed at a disadvantage when bidding against bidders in the room or on the telephone, the procedure for placing bids through Phillips's online bidding platform is a one-step process. By clicking the bid button on the computer screen, a bidder submits a bid. Online bidders acknowledge and agree that bids so submitted are final and may not under any circumstances be amended or retracted. During a live auction, when bids other than online bids are placed, they will be displayed on the online bidder's computer screen as 'floor,' 'phone' or 'paddle no' bids. 'Floor' bids include bids made by the auctioneer to protect the reserve. In the event that an online bid and a 'floor' or 'phone' bid are identical, the 'floor' or 'phone' bid will take precedence. The next bidding increment is shown for the convenience of online bidders under the bid button. The bidding increment available to online bidders may vary from the next bid actually taken by the auctioneer, as the auctioneer may deviate from Phillips's standard increments at any time at his or her discretion, but an online bidder may only place a bid in a whole bidding increment. Phillips's bidding increments are published in the Guide for Prospective Buyers.

(e) When making a bid, whether in person, by absentee bid, on the telephone or online, a bidder accepts personal liability to pay the purchase price, as described more fully in Paragraph 6 (a) below, plus all other applicable charges unless it has been explicitly agreed in writing with Phillips before the commencement of the auction that the bidder is acting as agent on behalf of an identified third party acceptable to Phillips and that we will only look to the principal for such payment.

(f) By participating in the auction, whether in person, by absentee bid, on the telephone or online, each prospective buyer represents and warrants that any bids placed by such person, or on such person's behalf, are not the product of any collusive or other anti-competitive agreement and are otherwise consistent with federal and state antitrust law.

(g) Arranging absentee, telephone and online bids is a free service provided by Phillips to prospective buyers. While we undertake to exercise reasonable care in undertaking such activity, we cannot accept liability for failure to execute such bids except where such failure is caused by our willful misconduct.

(h) Employees of Phillips and our affiliated companies, including the auctioneer, may bid at the auction by placing absentee bids so long as they do not know the reserve when submitting their absentee bids and otherwise comply with our employee bidding procedures.

5 CONDUCT OF THE AUCTION

(a) Unless otherwise indicated by the symbol •, each lot is offered subject to a reserve, which is the confidential minimum selling price agreed by Phillips with the seller. The reserve will not exceed the low pre-sale estimate at the time of the auction.

(b) The auctioneer has discretion at any time to refuse any bid, withdraw any lot, re-offer a lot for sale (including after the fall of the hammer) if he or she believes there may be error or dispute and take such other action as he or she deems reasonably appropriate. Phillips shall have no liability whatsoever for any such action taken by the auctioneer. If any dispute arises after the sale, our sale record is conclusive. The auctioneer may accept bids made by a company affiliated with Phillips provided that the bidder does not know the reserve placed on the lot.

(c) The auctioneer will commence and advance the bidding at levels and in increments he or she considers appropriate. In order to protect the reserve on any lot, the auctioneer may place one or more bids on behalf of the seller up to the reserve without indicating he or she is doing so, either by placing consecutive bids or bids in response to other bidders. If a lot is offered without reserve, unless there are already competing absentee bids,

the auctioneer will generally open the bidding at 50% of the lot's low pre-sale estimate. In the absence of a bid at that level, the auctioneer will proceed backwards at his or her discretion until a bid is recognized and will then advance the bidding from that amount. Absentee bids on no reserve lots will, in the absence of a higher bid, be executed at approximately 50% of the low pre-sale estimate or at the amount of the bid if it is less than 50% of the low pre-sale estimate. If there is no bid whatsoever on a no reserve lot, the auctioneer may deem such lot unsold.

(d) The sale will be conducted in US dollars and payment is due in US dollars. For the benefit of international clients, pre-sale estimates in the auction catalogue may be shown in pounds sterling and/or euros and, if so, will reflect approximate exchange rates. Accordingly, estimates in pounds sterling or euros should be treated only as a guide.

(e) Subject to the auctioneer's reasonable discretion, the highest bidder accepted by the auctioneer will be the buyer and the striking of the hammer marks the acceptance of the highest bid and the conclusion of a contract for sale between the seller and the buyer. Risk and responsibility for the lot passes to the buyer as set forth in Paragraph 7 below.

(f) If a lot is not sold, the auctioneer will announce that it has been "passed," "withdrawn," "returned to owner" or "bought-in."

(g) Any post-auction sale of lots offered at auction shall incorporate these Conditions of Sale and Authorship Warranty as if sold in the auction.

6 PURCHASE PRICE AND PAYMENT

(a) The buyer agrees to pay us, in addition to the hammer price of the lot, the buyer's premium and any applicable sales tax (the "Purchase Price"). The buyer's premium is 25% of the hammer price up to and including \$100,000, 20% of the portion of the hammer price above \$100,000 up to and including \$2,000,000 and 12% of the portion of the hammer price above \$2,000,000. Phillips reserves the right to pay from our compensation an introductory commission to one or more third parties for assisting in the sale of property offered and sold at auction.

(b) Sales tax, use tax and excise and other taxes are payable in accordance with applicable law. All prices, fees, charges and expenses set out in these Conditions of Sale are quoted exclusive of applicable taxes. Phillips will only accept valid resale certificates from US dealers as proof of exemption from sales tax. All foreign buyers should contact the Client Accounting Department about tax matters.

(c) Unless otherwise agreed, a buyer is required to pay for a purchased lot immediately following the auction regardless of any intention to obtain an export or import license or other permit for such lot. Payments must be made by the invoiced party in US dollars either by cash, check drawn on a US bank or wire transfer, as follows:

(i) Phillips will accept payment in cash provided that the total amount paid in cash or cash equivalents does not exceed US\$10,000. Buyers paying in cash should do so in person at our Client Accounting Desk at 450 Park Avenue during regular weekday business hours.

(ii) Personal checks and banker's drafts are accepted if drawn on a US bank and the buyer provides to us acceptable government issued identification. Checks and banker's drafts should be made payable to "Phillips." If payment is sent by mail, please send the check or banker's draft to the attention of the Client Accounting Department at 450 Park Avenue, New York, NY 10022 and make sure that the sale and lot number is written on the check. Checks or banker's drafts drawn by third parties will not be accepted.

(iii) Payment by wire transfer may be sent directly to Phillips. Bank transfer details:

Citibank
322 West 23rd Street, New York, NY 10011
SWIFT Code: CITIUS33
ABA Routing: 021 000 089
For the account of Phillips
Account no.: 58347736

Please reference the relevant sale and lot number.

(d) As a courtesy to clients, Phillips will accept American Express, Visa and Mastercard to pay for invoices of \$100,000 or less. A processing fee will apply.

(e) Title in a purchased lot will not pass until Phillips has received the Purchase Price for that lot in cleared funds. Phillips is not obliged to release a lot to the buyer until title in the lot has passed and appropriate identification has been provided, and any earlier release does not affect the passing of title or the buyer's unconditional obligation to pay the Purchase Price.

7 COLLECTION OF PROPERTY

(a) Phillips will not release a lot to the buyer until we have received payment of its Purchase Price in full in cleared funds, the buyer has paid all outstanding amounts due to Phillips or any of our affiliated companies, including any charges payable pursuant to Paragraph 8 (a) below, and the buyer has satisfied such other terms as we in our sole discretion shall require, including completing any anti-money laundering or anti-terrorism financing checks. As soon as a buyer has satisfied all of the foregoing conditions, he or she should contact our Shipping Department at +1 212 940 1372 or +1 212 940 1373 to arrange for collection of purchased property.

(b) The buyer must arrange for collection of a purchased lot within seven days of the date of the auction. Promptly after the auction, we will transfer all lots to our warehouse located at 29-09 37th Avenue in Long Island City, Queens, New York. All purchased lots should be collected at this location during our regular weekday business hours. As a courtesy to clients, Phillips will upon request transfer on a bi-weekly basis purchased lots suitable for hand-carry back to our premises at 450 Park Avenue, New York, New York for collection within 30 days following the date of the auction. Purchased lots are at the buyer's risk, including the responsibility for insurance, from the earlier to occur of (i) the date of collection or (ii) seven days after the auction. Until risk passes, Phillips will compensate the buyer for any loss or damage to a purchased lot up to a maximum of the Purchase Price paid, subject to our usual exclusions for loss or damage to property.

(c) As a courtesy to clients, Phillips will, without charge, wrap purchased lots for hand-carry only. We will, at the buyer's expense, either provide packing, handling, insurance and shipping services or coordinate with shipping agents instructed by the buyer in order to facilitate such services for property bought at Phillips. Any such instruction, whether or not made at our recommendation, is entirely at the buyer's risk and responsibility, and we will not be liable for acts or omissions of third party packers or shippers. Third party shippers should contact us by telephone at +1 212 940 1376 or by fax at +1 212 924 6477 at least 24 hours in advance of collection in order to schedule pickup.

(d) Phillips will require presentation of government issued identification prior to release of a lot to the buyer or the buyer's authorized representative.

8 FAILURE TO COLLECT PURCHASES

(a) If the buyer pays the Purchase Price but fails to collect a purchased lot within 30 days of the auction, the buyer will incur a late collection fee of \$10 per day for each uncollected lot. Additional charges may apply to oversized lots. We will not release purchased lots to the buyer until all such charges have been paid in full.

(b) If a purchased lot is paid for but not collected within six months of the auction, the buyer authorizes Phillips, upon notice, to arrange a resale of the item by auction or private sale, with estimates and a reserve set at Phillips's reasonable discretion. The proceeds of such sale will be applied to pay for storage charges and any other outstanding costs and expenses owed by the buyer to Phillips or our affiliated companies and the remainder will be forfeited unless collected by the buyer within two years of the original auction.

9 REMEDIES FOR NON-PAYMENT

(a) Without prejudice to any rights the seller may have, if the buyer without prior agreement fails to make payment of the Purchase Price for a lot in cleared funds within seven days of the auction, Phillips may in our sole discretion exercise one or more of the following remedies: (i) store the lot at Phillips's premises or elsewhere at the buyer's sole risk and expense at the same rates as set forth in Paragraph 8 (a) above; (ii) cancel the sale of the lot, retaining any partial payment of the Purchase Price as liquidated damages; (iii) reject future bids from the buyer or render such bids subject to payment of a deposit; (iv) charge interest at 12% per annum from the date payment became due until the date the Purchase Price is received in cleared funds; (v) subject to notification of the buyer, exercise a lien over any of the buyer's property which is in the possession of Phillips and instruct our affiliated companies to exercise a lien over any of the buyer's property which is in their possession and, in each case, no earlier than 30 days from the date of such notice, arrange the sale of such property and apply the proceeds to the amount owed to Phillips or any of our affiliated companies after the deduction from sale proceeds of our standard vendor's commission and all sale-related expenses; (vi) resell the lot by auction or private sale, with estimates and a reserve set at Phillips reasonable discretion, it being understood that in the event such resale is for less than the original hammer price and buyer's premium for that lot, the buyer will remain liable for the shortfall together with all costs incurred in such resale; (vii) commence legal proceedings to recover the hammer price and buyer's premium for that lot, together with interest and the costs of such proceedings; (viii) set off the outstanding amount remaining unpaid by the buyer against any amounts which we or any of our affiliated companies may owe the buyer in any other transactions; (ix) release the name and address of the buyer to the seller to enable the seller to commence legal proceedings to recover the amounts due and legal costs or (x) take such other action as we deem necessary or appropriate.

(b) As security to us for full payment by the buyer of all outstanding amounts due to Phillips and our affiliated companies, Phillips retains, and the buyer grants to us, a security interest in each lot purchased at auction by the buyer and in any other property or money of the buyer in, or coming into, our possession or the possession of one of our affiliated companies. We may apply such money or deal with such property as the Uniform Commercial Code or other applicable law permits a secured creditor to do. In the event that we exercise a lien over property in our possession because the buyer is in default to one of our affiliated companies, we will so notify the buyer. Our security interest in any individual lot will terminate upon actual delivery of the lot to the buyer or the buyer's agent.

(c) In the event the buyer is in default of payment to any of our affiliated companies, the buyer also irrevocably authorizes Phillips to pledge the buyer's property in our possession by actual or constructive delivery to our affiliated company as security for the payment of any outstanding amount due. Phillips will notify the buyer if the buyer's property has been delivered to an affiliated company by way of pledge.

10 RESCISSION BY PHILLIPS

Phillips shall have the right, but not the obligation, to rescind a sale without notice to the buyer if we reasonably believe that there is a material breach of the seller's representations and warranties or the Authorship Warranty or an adverse claim is made by a third party. Upon notice of Phillips's election to rescind the sale, the buyer will promptly return the lot to Phillips, and we will then refund the Purchase Price paid to us. As described more fully in Paragraph 13 below, the refund shall constitute the sole remedy and recourse of the buyer against Phillips and the seller with respect to such rescinded sale.

11 EXPORT, IMPORT AND ENDANGERED SPECIES LICENSES AND PERMITS

Before bidding for any property, prospective buyers are advised to make their own inquiries as to whether a license is required to export a lot from the United States or to import it into another country. Prospective buyers are advised that some countries prohibit the import of property made of or incorporating plant or animal material, such as coral, crocodile, ivory, whalebone, rhinoceros horn or tortoiseshell, irrespective of age, percentage or value. Accordingly, prior to bidding, prospective buyers considering export of purchased lots should familiarize themselves with relevant export and import regulations of the countries concerned. It is solely the buyer's responsibility to comply with these laws and to obtain any necessary export, import and endangered species licenses or permits. Failure to obtain a license or permit or delay in so doing will not justify the cancellation of the sale or any delay in making full payment for the lot. As a courtesy to clients, Phillips has marked in the catalogue lots containing potentially regulated plant or animal material, but we do not accept liability for errors or for failing to mark lots containing protected or regulated species.

12 DATA PROTECTION

(a) In connection with the supply of auction and related services, or as required by law, Phillips may ask clients to provide personal data. Phillips may take and retain a copy of government-issued identification such as a passport or driver's license. We will use your personal data (i) to provide auction and related services; (ii) to enforce these Conditions of Sale; (iii) to carry out identity and credit checks; (iv) to implement and improve the management and operations of our business and (v) for other purposes set out in our Privacy Policy published on the Phillips website at www.phillips.com (the 'Privacy Policy') and available on request by emailing dataprotection@phillips.com. By agreeing to these Conditions of Sale, you consent to our use of your personal data, including sensitive personal data, in accordance with the Privacy Policy. The personal data we may collect and process is listed, and sensitive personal data is defined, in our Privacy Policy. Phillips may also, from time to time, send you materials about us and our services or other information which we think you may find interesting. If you would prefer not to receive such information, please email us at dataprotection@phillips.com. Please also email us at this address to receive information about your personal data or to advise us if the personal data we hold about you is inaccurate or out of date.

(b) In order to provide our services, we may disclose your personal data to third parties, including professional advisors, shippers and credit agencies. We will disclose, share with and transfer your personal data to Phillips's affiliated persons (natural or legal) for administration, sale and auction related purposes. You expressly consent to such transfer of your personal data. We will not sell, rent or otherwise transfer any of your personal data to third parties except as otherwise expressly provided in this Paragraph 12.

(c) Phillips's premises may be subject to video surveillance and recording. Telephone calls (e.g., telephone bidding) may also be recorded. We may process that information in accordance with our Privacy Policy.

13 LIMITATION OF LIABILITY

(a) Subject to subparagraph (e) below, the total liability of Phillips, our affiliated companies and the seller to the buyer in connection with the sale of a lot shall be limited to the Purchase Price actually paid by the buyer for the lot.

(b) Except as otherwise provided in this Paragraph 13, none of Phillips, any of our affiliated companies or the seller (i) is liable for any errors or omissions, whether orally or in writing, in information provided to prospective buyers by Phillips or any of our affiliated companies or (ii) accepts responsibility to any bidder in respect of acts or omissions, whether negligent or otherwise, by Phillips or any of our affiliated companies in connection with the conduct of the auction or for any other matter relating to the sale of any lot.

(c) All warranties other than the Authorship Warranty, express or implied, including any warranty of satisfactory quality and fitness for purpose, are specifically excluded by Phillips, our affiliated companies and the seller to the fullest extent permitted by law.

(d) Subject to subparagraph (e) below, none of Phillips, any of our affiliated companies or the seller shall be liable to the buyer for any loss or damage beyond the refund of the Purchase Price referred to in subparagraph (a) above, whether such loss or damage is characterized as direct, indirect, special, incidental or consequential, or for the payment of interest on the Purchase Price to the fullest extent permitted by law.

(e) No provision in these Conditions of Sale shall be deemed to exclude or limit the liability of Phillips or any of our affiliated companies to the buyer in respect of any fraud or fraudulent misrepresentation made by any of us or in respect of death or personal injury caused by our negligent acts or omissions.

14 COPYRIGHT

The copyright in all images, illustrations and written materials produced by or for Phillips relating to a lot, including the contents of this catalogue, is and shall remain at all times the property of Phillips and such images and materials may not be used by the buyer or any other party without our prior written consent. Phillips and the seller make no representations or warranties that the buyer of a lot will acquire any copyright or other reproduction rights in it.

15 GENERAL

(a) These Conditions of Sale, as changed or supplemented as provided in Paragraph 1 above, and Authorship Warranty set out the entire agreement between the parties with respect to the transactions contemplated herein and supersede all prior and contemporaneous written, oral or implied understandings, representations and agreements.

(b) Notices to Phillips shall be in writing and addressed to the department in charge of the sale, quoting the reference number specified at the beginning of the sale catalogue. Notices to clients shall be addressed to the last address notified by them in writing to Phillips.

(c) These Conditions of Sale are not assignable by any buyer without our prior written consent but are binding on the buyer's successors, assigns and representatives.

(d) Should any provision of these Conditions of Sale be held void, invalid or unenforceable for any reason, the remaining provisions shall remain in full force and effect. No failure by any party to exercise, nor any delay in exercising, any right or remedy under these Conditions of Sale shall act as a waiver or release thereof in whole or in part.

16 LAW AND JURISDICTION

(a) The rights and obligations of the parties with respect to these Conditions of Sale and Authorship Warranty, the conduct of the auction and any matters related to any of the foregoing shall be governed by and interpreted in accordance with laws of the State of New York, excluding its conflicts of law rules.

(b) Phillips, all bidders and all sellers agree to the exclusive jurisdiction of the (i) state courts of the State of New York located in New York City and (ii) the federal courts for the Southern and Eastern Districts of New York to settle all disputes arising in connection with all aspects of all matters or transactions to which these Conditions of Sale and Authorship Warranty relate or apply.

(c) All bidders and sellers irrevocably consent to service of process or any other documents in connection with proceedings in any court by facsimile transmission, personal service, delivery by mail or in any other manner permitted by New York law or the law of the place of service, at the last address of the bidder or seller known to Phillips.

AUTHORSHIP WARRANTY

Phillips warrants the authorship of property in this auction catalogue described in headings in **BOLD** or **CAPITALIZED** type for a period of five years from date of sale by Phillips, subject to the exclusions and limitations set forth below.

(a) Phillips gives this Authorship Warranty only to the original buyer of record (i.e., the registered successful bidder) of any lot. This Authorship Warranty does not extend to (i) subsequent owners of the property, including purchasers or recipients by way of gift from the original buyer, heirs, successors, beneficiaries and assigns; (ii) property where the description in the catalogue states that there is a conflict of opinion on the authorship of the property; (iii) property where our attribution of authorship was on the date of sale consistent with the generally accepted opinions of specialists, scholars or other experts; (iv) property whose description or dating is proved inaccurate by means of scientific methods or tests not generally accepted for use at the time of the publication of the catalogue or which were at such time deemed unreasonably expensive or impractical to use or likely in our reasonable opinion to have caused damage or loss in value to the lot or (v) there has been no material loss in value of the lot from its value had it been as described in the heading of the catalogue entry.

(b) In any claim for breach of the Authorship Warranty, Phillips reserves the right, as a condition to rescinding any sale under this warranty, to require the buyer to provide to us at the buyer's expense the written opinions of two recognized experts approved in advance by Phillips. We shall not be bound by any expert report produced by the buyer and reserve the right to consult our own experts at our expense. If Phillips agrees to rescind a sale under the Authorship Warranty, we shall refund to the buyer the reasonable costs charged by the experts commissioned by the buyer and approved in advance by us.

(c) Subject to the exclusions set forth in subparagraph (a) above, the buyer may bring a claim for breach of the Authorship Warranty provided that (i) he or she has notified Phillips in writing within three months of receiving any information which causes the buyer to question the authorship of the lot, specifying the auction in which the property was included, the lot number in the auction catalogue and the reasons why the authorship of the lot is being questioned and (ii) the buyer returns the lot to Phillips in the same condition as at the time of its auction and is able to transfer good and marketable title in the lot free from any third party claim arising after the date of the auction. Phillips has discretion to waive any of the foregoing requirements.

(d) The buyer understands and agrees that the exclusive remedy for any breach of the Authorship Warranty shall be rescission of the sale and refund of the original Purchase Price paid. This remedy shall constitute the sole remedy and recourse of the buyer against Phillips, any of our affiliated companies and the seller and is in lieu of any other remedy available as a matter of law or equity. This means that none of Phillips, any of our affiliated companies or the seller shall be liable for loss or damage beyond the remedy expressly provided in this Authorship Warranty, whether such loss or damage is characterized as direct, indirect, special, incidental or consequential, or for the payment of interest on the original Purchase Price.





PHILLIPS

CHAIRMAN and CHIEF EXECUTIVE OFFICER

Edward Dolman

PRESIDENT

Michael McGinnis

CHIEF OPERATING OFFICER

Sean Cleary

CHIEF FINANCIAL OFFICER

Annette Schwaer

CHIEF INFORMATION OFFICER

Ben Carey

DEPUTY CHAIRMAN

Patricia G. Hambrecht

DEPUTY CHAIRMAN

Svetlana Marich

SENIOR DIRECTORS

Finn Schouenborg Dombernowsky
David Georgiades
Vanessa Hallett

Alexander Payne
August O. Uribe
Olivier Vrankenne

DIRECTORS

Henry Allsopp
Alex Heminway
Nazgol Jahan

Martin Klosterfelde
Cary Leibowitz
Jean-Michel Placent

Peter Sumner
Kelly Troester
Ben Williams

INTERNATIONAL SPECIALISTS

Berlin Martin Klosterfelde, Director and International Specialist, Contemporary Art +49 177 628 4110

Brussels Olivier Vrankenne, Co-Head Contemporary Art, Europe +32 486 43 43 44

Geneva Oksana Katchaluba, Specialist, Contemporary Art +41 22 906 80 00

Istanbul Deniz Atac, Consultant +90 533 374 1198

London Svetlana Marich, Co-Head Contemporary Art, Europe +44 20 7318 4010

Los Angeles Maya McLaughlin, Specialist, Contemporary Art +1 323 791 1771

Milan Laura Garbarino, Senior International Specialist, Contemporary Art +39 339 478 9671

Moscow Ludmila Bazeva, Chief Operating Officer, Russia +7 495 225 88 22

Paris Maria Cifuentes Caruncho, Specialist +33 142 78 67 77

Portugal Maura Marvão, Consultant, Contemporary Art +351 917 564 427

Zurich Niklaus Kuenzler, Specialist, Contemporary Art +41 79 533 90 00

WORLDWIDE OFFICES

NEW YORK

450 Park Avenue, New York, NY 10022, USA
tel +1 212 940 1200 fax +1 212 940 1378

BERLIN

Kurfürstendamm 193, 10707 Berlin, Germany
tel +49 30 887 297 44

BRUSSELS

rue Jean Baptiste Colyns 72, 1050 Brussels, Belgium
tel +32 486 43 43 44

GENEVA

23 quai des Bergues, 1201 Geneva, Switzerland
tel +41 22 906 80 00 fax +41 22 906 80 01

ISTANBUL

Meclisi Mebusan Caddesi, Deniz Apartmani No. 79/8
Beyoglu 34427, Istanbul, Turkey
tel +90 533 374 1198

LONDON

30 Berkeley Square, London W1J 6EX, United Kingdom
tel +44 20 7318 4010 fax +44 20 7318 4011

LOS ANGELES

7285 Woodrow Wilson, Los Angeles, CA 90068, USA
tel +1 323 791 1771

MOSCOW

Nikolskaya Str 19-21, 5th floor, 109012 Moscow, Russia
tel +7 495 225 88 22 fax +7 495 225 88 87

PARIS

46 rue du Bac, 75007 Paris, France
tel +33 1 42 78 67 77 fax +33 1 42 78 23 07

ZURICH

Restelbergstrasse 89, 8044 Zurich, Switzerland
tel +41 79 533 90 00

SPECIALISTS AND DEPARTMENTS

CONTEMPORARY ART

David Georgiades, Worldwide Co-Head Contemporary Art +1 212 940 1280
August O. Uribe, Worldwide Co-Head Contemporary Art +1 212 940 1208

NEW YORK

Jean-Michel Placent +1 212 940 1263
Zach Miner +1 212 940 1256
Amanda Stoffel, Head of Evening Sale +1 212 940 1261
Kate Bryan, Head of Day Sale +1 212 940 1267
Benjamin Godsill, Head of Under the Influence Sale +1 212 940 1333

Katherine Lukacher +1 212 940 1215
Samuel Mansour +1 212 940 1219
Chloë Waddington +1 212 940 1288
Courtney Raterman +1 212 940 1392
Kyla Sullivan +1 212 940 1204

LONDON

Peter Sumner, Head of Contemporary Art, London +44 20 7318 4063
Henry Highley, Head of Day Sale +44 20 7318 4061
Tamila Kerimova, Head of Under the Influence Sale +44 20 7318 4065

Matt Langton +44 20 7318 4074

Charlotte Salisbury +44 20 7318 4058
Simon Tovey +44 20 7318 4084
Hannah Tjaden +44 20 7318 4093
Chiara Panarello +44 20 7318 4073

LATIN AMERICAN ART

Henry Allsopp, Worldwide Head +44 20 7318 4060
Laura González, Director, New York +1 212 940 1216
Kaeli Deane +1 212 940 1401
Carolina Scarborough +1 212 940 1289
Paula Campolieto +1 212 940 1255

MODERN AND CONTEMPORARY EDITIONS

Cary Leibowitz, Worldwide Co-Director +1 212 940 1222
Kelly Troester, Worldwide Co-Director +1 212 940 1221

NEW YORK

Jannah Greenblatt +1 212 940 1332
Jeffrey Kang +1 212 940 1238

LONDON

Robert Kennan, Head of Sale +44 20 7318 4075
Anne Schneider-Wilson +44 20 7318 4042
Ross Thomas +44 20 7318 4077
Rebecca Tooby-Desmond +44 20 7318 4079

EXHIBITIONS

Brittany Lopez Slater +1 212 940 1299
Fiona M. McGovern +44 207 901 7901
Milda Steinboka +44 207 901 7901

DESIGN

Alexander Payne, Senior Director +44 20 7318 4052
and Worldwide Head, Design

NEW YORK

Alex Heminway, New York Director +1 212 940 1268
Meaghan Roddy, Head of Sale +1 212 940 1266

Cordelia Lembo +1 212 940 1265
Emily Fitzgerald +1 212 940 1339

LONDON

Ben Williams, Head of Sale +44 20 7318 4027

Domenico Raimondo +44 20 7318 4016
Marcus McDonald +44 20 7318 4095

Marta De Roia +44 20 7318 4096
Sofia Sayn-Wittgenstein +44 20 7318 4023
Madalena Horta e Costa +44 20 7318 4019

PHOTOGRAPHS

Vanessa Hallett, Senior Director +1 212 940 1243
and Worldwide Head, Photographs

NEW YORK

Shlomi Rabi, Head of Sale +1 212 940 1246
Caroline Deck +1 212 940 1247
Sarah Krueger +1 212 940 1225

Kelly Van Ingen +1 212 940 1245

LONDON

Lou Proud, Head of Photographs, London +44 20 7318 4018
Yuka Yamaji +44 20 7318 4098
Alexandra Bibby +44 20 7318 4087

Sophie Busby +44 20 7318 4092

CHICAGO

Carol Ehlers +1 773 230 9192

JEWELS

Nazgol Jahan, Worldwide Director +1 212 940 1283

NEW YORK

Kristen Dowling +1 212 940 1302
Christina Alford +1 212 940 1365

LONDON

Lane Clements McLean +44 20 7318 4010

PRIVATE SALES

Susanna Brockman +44 20 7318 4041

PROPOSALS

Amy Davis, New York +1 212 940 1271

CLIENT DEVELOPMENT

LONDON

Isadora Tharin
Linda Pyke

NEW YORK

Amy Sheldon

MUSEUM SERVICES DEPARTMENT

NEW YORK

Lauren Shadford +1 212 940 1257
Cecilia Wolfson +1 212 940 1258

BUSINESS DIRECTOR EUROPE

LONDON

Paul de Bono +44 20 7318 4070

PRIVATE CLIENT SERVICES

Finn Schouenborg Dombernowsky, International Head, Private Clients +44 20 7318 4010

LONDON

Dawn Zhu +44 20 7318 4017
Adam Clay +44 20 7318 4048
Lily Atherton Hanbury +44 20 7318 4040

NEW YORK

Philae Knight +1 212 940 1313
Caroline Conegliano +1 212 940 1297
Anna Lin Poulson +1 212 940 1361
Sara Tayeb-Khalifa +1 212 940 1383

COMMUNICATIONS AND MARKETING

NEW YORK

Trish Walsh, Marketing Manager

LONDON

Alex Godwin-Brown, Head of Press and Events, Europe

ART AND PRODUCTION

Andrea Koronkiewicz, Director of Creative Services
Orlann Capazorio, Director of Production
Jeff Velazquez, Production Designer
Christine Knorr, Graphic Designer
James Reeder, Graphic Designer
Darren Tuozzoli, Graphic Designer

OFFICE OF THE CHAIRMAN AND CHIEF EXECUTIVE OFFICER

Mariangela Renshaw

NEW YORK +1 212 940 1455
LONDON +44 20 7318 4029

OFFICE OF THE PRESIDENT

NEW YORK

Elizabeth Anne Wallace +1 212 940 1303

LONDON

Lucinda Newman +44 207 318 4099

SALE INFORMATION

AUCTION & VIEWING LOCATION

450 Park Avenue New York 10022

AUCTION

8 DECEMBER 2014 at 2pm

VIEWING

3 – 8 December

Monday – Saturday 10am – 6pm

Sunday 12pm – 6pm

SALE DESIGNATION

When sending in written bids or making enquiries please refer to this sale as NY060214 or Jewels.

WORLDWIDE DIRECTOR

Nazgol Jahan +1 212 940 1283

JEWELS

Kristen Dowling +1 212 940 1302

Lane McLean +44 20 7318 4032

Christina Alford +1 212 940 1365

PHOTOGRAPHY

Antfarm Photography

AUCTIONEERS

Alexander Gilkes - 1308958

August Uribe - 0926461

Sarah Krueger - 1460468

Marissa Piedra - 1460469

Henry Highley - 2008889

CATALOGUES

Emma Miller +1 212 940 1240

catalogues@phillips.com

\$35/€25/£22 at the gallery

ABSENTEE AND TELEPHONE BIDS

Main +1 212 940 1228 fax +1 212 924 1749

bidsnewyork@phillips.com

Marissa Piedra, Auction Manager

+1 212 940 1304

CLIENT ACCOUNTING

Sylvia Leitao +1 212 940 1231

Buyer Accounts

Joseph Blanks +1 212 940 1371

Seller Accounts

Teren Scudder +1 212 940 1232

CLIENT SERVICES

450 Park Avenue +1 212 940 1300

SHIPPING

Carol Mangan +1 212 940 1320

Preceding pages A Magnificent Diamond Necklace, Lot 186

An Important Emerald and Diamond Necklace, Lot 190

Opposite A Magnificent Fancy Yellow Diamond and Diamond Ring, Cartier, Lot 199

Following page A 'Les Danses Fantasques Giselle' Necklace, *Fabergé*, Lot 178

Inside back cover A Diamond Necklace/Bracelet, Lot 171

A Gold, Sapphire, Diamond, and Enamel Lion Head Bangle Bracelet, *Kutchinsky*, Lot 132

An Impressive Pair of Diamond and Emerald or Tahitian Cultured Pearl Ear Pendants, *David Webb*, Lot 174

Back cover A Magnificent Diamond Ring, *Fabergé*, Lot 200

TELEPHONE AND ABSENTEE BID FORM

PLEASE RETURN THIS FORM BY FAX TO +1 212 924 1749 OR EMAIL IT TO BIDSNEWYORK@PHILLIPS.COM AT LEAST 24 HOURS BEFORE THE SALE. PLEASE READ CAREFULLY THE INFORMATION IN THE RIGHT COLUMN AND NOTE THAT IT IS IMPORTANT THAT YOU INDICATE WHETHER YOU ARE APPLYING AS AN INDIVIDUAL OR ON BEHALF OF A COMPANY.

Please select the type of bid you wish to make with this form (please select one):

- ☐ **ABSENTEE BID FORM**
☐ **TELEPHONE BID FORM**

Please indicate in what capacity you will be bidding (please select one):

- ☐ **AS A PRIVATE INDIVIDUAL**
☐ **ON BEHALF OF A COMPANY**

| Sale Title | | Sale Number | Sale Date |
|--------------------------------|------------|----------------|-----------|
| Title | First Name | Surname | |
| Company (if applicable) | | Account Number | |
| Address | | | |
| | | | |
| City | | State/Country | |
| Zip Code | | | |
| Phone | | Mobile | |
| Email | | Fax | |
| Phone (for Phone Bidding only) | | | |

| Lot Number In Consecutive Order | Brief Description | US \$ Limit* Absentee Bids Only |
|------------------------------------|-------------------|------------------------------------|
| | | |
| | | |
| | | |
| | | |
| | | |
| | | |
| | | |
| | | |
| | | |

* Excluding Buyer's Premium and sales or use taxes

FINANCIAL INFORMATION

For your bid to be accepted, we require the following information for our reference only. Please note that you may be contacted to provide a bank reference:

| | |
|--|-----------------|
| Credit Card Type | Expiration Date |
| Credit Card Number | |
| For anyone wishing to bid on lots with a low pre-sale estimate above \$10,000, please provide the following information (for reference only) | |
| Bank Name | Contact |
| Telephone / Fax | Account Number |

Please note that you may be contacted to provide additional bank references.

I hereby authorize the above references to release information to PHILLIPS. Please bid on my behalf up to the limits shown for the indicated lots without legal obligations to PHILLIPS, its staff or agents; and subject to the Conditions of Sale and Authorship Warranty printed in the catalogue, additional notices or terms printed in the catalogue and supplements to the catalogue posted in the salesroom, and in accordance with the above statements and conditions.

| | |
|-----------|------|
| Signature | Date |
|-----------|------|

☐ I ACCEPT THE CONDITIONS OF SALE OF PHILLIPS AS STATED IN OUR CATALOGUES AND ON OUR WEBSITE.

- **PRIVATE PURCHASES:** Proof of identity in the form of government-issued identification will be required.
- **COMPANY PURCHASES:** If you are buying under a business entity we require a copy of government-issued identification (such as a resale certificate, corporate bank information or the certificate of incorporation) to verify the status of the company.
- **CONDITIONS OF SALE** All bids are placed and executed, and all lots are sold and purchased, subject to the Conditions of Sale printed in the catalogue. Please read them carefully before placing a bid. Your attention is drawn to Paragraph 4 of the Conditions of Sale.
- If you cannot attend the sale, we can execute bids confidentially on your behalf.
- Phillips charges the successful bidder a commission, or buyer's premium, on the hammer price of each lot sold. The buyer's premium is payable by the buyer as part of the total purchase price at the following rates: 25% of the hammer price up to and including \$100,000, 20% of the portion of the hammer price above \$100,000 up to and including \$2,000,000 and 12% of the portion of the hammer price above \$2,000,000 on each lot sold.
- "Buy" or unlimited bids will not be accepted. Alternative bids can be placed by using the word "OR" between lot numbers.
- For absentee bids, indicate your maximum limit for each lot, excluding the buyer's premium and any applicable sales or use tax. Your bid will be executed at the lowest price taking into account the reserve and other bidders. On no reserve lots, in the absence of other bids, your bid will be executed at approximately 50% of the low pre-sale estimate or at the amount specified, if less than 50% of the low estimate.
- Your bid must be submitted in the currency of the sale and will be rounded down to the nearest amount consistent with the auctioneer's bidding increments.
- If we receive identical bids, the first bid received will take precedence.
- Arranging absentee and telephone bids is a free service provided by us to prospective buyers. While we will exercise reasonable care in undertaking such activity, we cannot accept liability for errors relating to execution of your bids except in cases of willful misconduct. Agreement to bid by telephone must be confirmed by you promptly in writing or by fax. Telephone bid lines may be recorded.
- Please submit your bids to the Bid Department by fax at +1 212 924 1749 or scan and email to bidsnewyork@phillips.com at least 24 hours before the sale. You will receive confirmation by email within one business day. To reach the Bid Department by phone please call +1 212 940 1228.
- Absent prior payment arrangements, please provide a bank reference. Payment can be made by cash (up to \$10,000), credit card (up to \$100,000), money order, wire transfer, bank check or personal check with identification. Please note that credit cards are subject to a surcharge.
- Lots cannot be collected until payment has cleared and all charges have been paid.
- By signing this Bid Form, you consent to our use of your personal data, including sensitive personal data, in accordance with Phillips's Privacy Policy published on our website at www.phillips.com or available on request by emailing dataprotection@phillips.com. We may send you materials about us and our services or other information which we think you may find interesting. If you would prefer not to receive such information, please email us at dataprotection@phillips.com.
- Phillips's premises may be subject to video surveillance and recording. Telephone calls (e.g., telephone bidding) may also be recorded. We may process that information in accordance with our Privacy Policy.

PHILLIPS

450 Park Avenue New York 10022
PHILLIPS.COM +1 212 940 1200
bidsnewyork@phillips.com

IN-PERSON REGISTRATION FORM

TO BID IN PERSON PLEASE SUBMIT THIS FORM BY EMAIL TO BIDSNEWYORK@PHILLIPS.COM
OR FAX AT +1 212 924 1749 FOR PRE-REGISTRATION OR BRING IT TO THE AUCTION FOR
REGISTRATION AT 450 PARK AVENUE, NEW YORK, NY 10022

Please indicate in what capacity you will be bidding (please select one):

- ☐ **AS A PRIVATE INDIVIDUAL**
☐ **ON BEHALF OF A COMPANY**

| Sale Title | Number | Date |
|-------------------------|----------------|---------|
| Title | First Name | Surname |
| Company (if applicable) | Account Number | |
| Address | | |
| | | |
| City | State/Country | |
| Post Code | | |
| Phone | Mobile | |
| Email | Fax | |

FINANCIAL INFORMATION

For your bid to be accepted, we require the following information for our reference only.
Please note that you may be contacted to provide a bank reference:

| | |
|--------------------|-----------------|
| Credit Card Type | Expiration Date |
| Credit Card Number | |

For anyone wishing to bid on lots with a low pre-sale estimate above \$10,000, please provide the following information (for reference only)

| | |
|-----------------|----------------|
| Bank Name | Contact |
| Telephone / Fax | Account Number |

Please note that you may be contacted to provide additional bank references.

I hereby authorize the above references to release information to PHILLIPS. I agree that all bids and purchases are subject to the Conditions of Sale and Authorship Warranty printed in the catalogue, additional notices or terms printed in the catalogue and supplements to the catalogue posted in the salesroom, and in accordance with the above statements and conditions. I assume all responsibility for payment for the goods purchased under the assigned paddle. If I am acting as an agent, I agree to be personally responsible for all purchases made on behalf of my client(s), unless other arrangements are confirmed in writing prior to each auction.

| | |
|-----------|------|
| Signature | Date |
|-----------|------|

☐ **I ACCEPT THE CONDITIONS OF SALE OF PHILLIPS AS STATED IN OUR CATALOGUES AND ON OUR WEBSITE.**

Paddle Number

- **PRIVATE PURCHASES:** Proof of identity in the form of government-issued identification will be required.
- **COMPANY PURCHASES:** If you are buying under a business entity we require a copy of government-issued identification (such as a resale certificate, corporate bank information or the certificate of incorporation) to verify the status of the company.
- **CONDITIONS OF SALE** All bids are placed and executed, and all lots are sold and purchased, subject to the Conditions of Sale printed in the catalogue. Please read them carefully before placing a bid. Your attention is drawn to Paragraph 4 of the Conditions of Sale.
- Phillips charges the successful bidder a commission, or buyer's premium, on the hammer price of each lot sold. The buyer's premium is payable by the buyer as part of the total purchase price at the following rates: 25% of the hammer price up to and including \$100,000, 20% of the portion of the hammer price above \$100,000 up to and including \$2,000,000 and 12% of the portion of the hammer price above \$2,000,000 on each lot sold.
- Absent prior payment arrangements, please provide a bank reference. Payment can be made by cash (up to \$10,000), credit card (up to \$100,000), money order, wire transfer, bank check or personal check with identification. Please note that credit cards are subject to a surcharge.
- Lots cannot be collected until payment has cleared and all charges have been paid.
- By signing this Bid Form, you consent to our use of your personal data, including sensitive personal data, in accordance with Phillips's Privacy Policy published on our website at www.phillips.com or available on request by emailing dataprotection@phillips.com. We may send you materials about us and our services or other information which we think you may find interesting. If you would prefer not to receive such information, please email us at dataprotection@phillips.com.
- Phillips's premises may be subject to video surveillance and recording. Telephone calls (e.g., telephone bidding) may also be recorded. We may process that information in accordance with our Privacy Policy.



BIOGRAPHIES OF JEWELERS

MARINA B

Marina B began her illustrious career with the renowned jewelry house founded by her grandfather Sottiro Bulgari, where she created several of their enduring best-sellers. In the late 1970's, she left the family business to found her own independent luxury brand, Marina B. Her designs gained worldwide popularity as she opened independent stores across the world.

Over the years, Marina B's trend-setting collections have established an elite clientele including Sophia Loren, Elizabeth Taylor, Julia Roberts and Princess Grace. More recently, Alicia Keys, Faith Hill, Mila Kunis and Jennifer Lopez, among others, have worn new collections. Marina B creates extraordinary, innovative and bold collections that are chic, sumptuous and easy to wear. Inspired by both the art of jewelry design and her legendary archive, Marina B embodies both the classic and the contemporary by incorporating signature designs with modern twists.

MARGHERITA BURGNER

The designer Emanuela Burgener signs her creations in the name of Margherita, her eldest daughter, to whom her jewels are dedicated. Her designs are strikingly modern and fashionable yet maintain the noble traditions of classical Italian jewellery with the exceptional and meticulous craftsmanship established by Margherita's grandfather. In 1966, he founded the Valenza workshop, in northern Italy, where the family continues to work exclusively. A passion and love for the lively colours of aquamarine and other coloured precious gemstones, selected for their highest quality from all over the world, underlie Margherita Burgener's creations.

MARILYN F. COOPERMAN

Marilyn F. Cooperman began her career in design at the age of twenty. Moving from Toronto to New Zealand she wrote and illustrated the New Zealand Herald's first fashion and beauty column. In 1963 Marilyn moved to New York to work as a fashion designer. She met Fred Leighton at his Greenwich Village boutique and opened a studio on his premises to design and manufacture a collection of Mexican inspired resort wear. In 1987 he asked her to join his prestigious establishment, renowned for its rare and beautiful jewels. In 1994 Marilyn launched her own company in New York.

FABERGÉ

Fabergé, the world's most iconic artist jeweller, creates modern collections of extraordinary jewellery, watches and accessories for a discerning international clientele. Founded in 1842, Fabergé has been the most revered name in jewellery ever since Peter Carl Fabergé became official goldsmith to the Russian Imperial Court; the house created exquisite jewels and objects, including the legendary series of lavish and ingenious Imperial Easter Eggs.

ENIGMA

Established in 1989, originally as a Neuchâtel-based watch manufacturing company, Enigma has distinguished itself by creating innovative timepieces such as a collection of unusual jumping hours, a unique mechanical watch that rewinds by turning the bezel, and by setting diamonds on steel cases as early as 1991. In 2003, Enigma introduced and launched a fine jewelry collection and currently has international retail stores in Rome, Geneva, and Porto Cervo. Enigma jewels are recognizable for their strong, individual designs inspired by Gianni Bulgari, its founder and owner. Gianni Bulgari is the former Chairman and CEO of the eponymous family business, which he left in 1987.

FRED

Fred was founded in Paris in 1936 at the trendy rue Royale by Fred Samuel. From a young age, Samuel always had a fascination with the sea and pearls. Upon opening his boutique, he became the first jeweler to bring cultured pearls to France and distinguished himself by introducing innovative artistic designs. By doing so, Samuel became the jeweler of choice among the international jet set and Hollywood celebrities of his time. His success prompted him to expand all over Europe and in 1977 to North America. In 1995, the LVMH group acquired Fred. The main boutique has since moved to Place Vendôme, joining the other important names in high jewelry.

SEAMAN SCHEPPS

Seaman Schepps was an American jeweler known for his colorful retro-style pieces. Schepps opened his first store in Los Angeles in 1904 and later moved to San Francisco in 1914. He experienced rapid success in the trade by selling antique jewelry as well as his own creations and in 1934 opened what would be his most successful undertaking, a store on Madison Avenue. Inspired by his frequent trips to Paris where he admired the works of Verdura and Belperron at Boivin, he began developing his signature style of incorporating colorful gemstones that made his imaginative designs stand out from the rest. In the late 1960's, Schepps retired and his daughter Patricia Vaill took control of the firm. In 1992, the business was sold to Anthony Hopenjam and Jay Bauer and they continue to successfully produce pieces in the traditional Schepps style.

INDEX

Aldo Cipullo for Cartier 14, 32

Alexander Reza 198

Asprey 12, 13, 28

Boucheron 84

Buccellati 6, 8, 26, 27, 51, 138, 141, 143,
144, 165, 168, 169, 170, 179, 180, 181

Bulgari 15, 37, 45,

Cartier 21, 24, 31, 81, 87, 117, 142, 199

Chopard 39

Cooperman 7

David Webb 28, 128, 172, 174

Enigma 79, 80

Faberge 176, 178, 200

Fred 29, 30

Georg Jensen 11

Henry Dunay 127, 132

Kutchinsky 132

Kwiat 95, 96

L. Julian et Fils 106, 107

Margherita Burgener 63, 64, 66, 67, 72,
73, 76, 120, 126, 131, 137, 188

Marina B 33, 40, 42

Patek Phillipe 22

Reinstein Ross 53

Rolex 62

Schlumberger for Tiffany & Co. 16, 52, 89

Seaman Schepps 36, 41

Solange Azagury-Partridge 69

Stella Hakimi 1

Temple St Clair 1, 4

Tiffany & Co. 18, 71, 77, 85, 88, 90, 163, 167,

Tom Ford 17

Trianon 10, 20, 46, 58, 115

Van Cleef & Arpels 59, 60, 78, 151, 158

Vedura 55







[PHILLIPS.COM](https://www.phillips.com)