

# PHILLIPS



## JEWELS

NEW YORK 9 DECEMBER 2013













# JEWELS

NEW YORK 9 DECEMBER 2013 at 3pm

LOTS 1-209

**Viewing**

2 - 9 December

Monday - Saturday 10am - 6pm

Sunday 12pm - 6pm

**Front cover** A Magnificent Fancy Pink Diamond, Lot 209

**Inside front** A Diamond Bracelet, An Art Deco Sapphire and Diamond Bracelet, Lot 206, 106  
An Important Ruby, Diamond and Gold Cuff Bracelet, An Important Diamond and Gold Cuff Bracelet,  
An Emerald and Gold Suite, *Buccellati*, Lot 186, 136, 116

**Opposite** A Pair of Emerald and Diamond Ear Pendants, An Art Deco Jade, Diamond and Enamel Box  
*Cartier*, A Ruby and Diamond Bracelet Lot 202, 141, 110

**This page** An Impressive Diamond Ring *Cartier*, Lot 197



PROPERTY OF A LADY

1

**An Aquamarine, Diamond and Gold Pendant Necklace**

Suspending a rectangular-cut aquamarine, weighing approximately 37.50 carats, within a textured gold frame, to the pavé-set diamond link and fancy-link chain, mounted in 14K yellow gold, length 16 inches.

**Estimate** \$3,000-5,000

2

**A Gold Dress Set** SCHLUMBERGER BY TIFFANY & CO.

Comprising a pair of double-sided cufflinks designed as a rope twist knot, to the similarly designed smaller link; three shirt studs en suite, mounted in 18K yellow gold, cufflink length 1 inch, shirt stud length 1 1/5 inches.

Signed 'Schlumberger', 'Tiffany', with an original box

**Estimate** \$3,000-5,000



3



4



5



4

**A Gold, Diamond and Ruby Earclips and Brooch** TIFFANY & CO.  
Comprising a brooch, designed as a textured gold clover, centering on a circular-cut diamond and ruby cluster; a pair of earclips en suite, mounted in 14K yellow gold, brooch length 1 1/2 inches, earclips length 1 inch.  
Signed 'Tiffany & Co.'

**Estimate** \$1,000-2,000

PROPERTY OF A LADY

5

**A Natural Pearl and Diamond Bracelet**

Centering on a graduated line of natural pearls, interspersed by circular-cut diamonds, to the polished link chain, mounted in 14K yellow and white gold, length 7 inches.

With report no.H-2590 dated 6 April 2012 from the Gemological Center Gemexim, stating that the pearls are natural salt water pearls

**Estimate** \$2,000-3,000

3

**A Pair of Turquoise and Diamond Ear Pendants** VITA

Each designed as a carved turquoise drop, from a carved turquoise surmount, centering on a circular-cut diamond to the pavé-set diamond surround, mounted in 18K white gold, length 2 inches.

Signed 'Vita'

**Estimate** \$5,000-8,000

6



7



8



PROPERTY OF A LADY

7

**A Pair of Gold and Diamond Ear Pendants** GARRARD

Each designed as a cascade of textured gold links, accented by circular-cut diamonds, to the textured gold surmount, mounted in 18K yellow gold, length 2 1/2 inches.

With an original fitted box

**Estimate** \$2,500-3,500

PROPERTY OF A GENTLEMAN

6

**A Gold Cuff Bracelet** ARTHUR KING

Designed as an organic openwork hinged gold bangle, mounted in 18K yellow gold, diameter 2 1/4 inches.

Signed 'Arthur King', with an original box

**Estimate** \$2,500-4,000

PROPERTY OF A GENTLEMAN

8

**A Cultured Pearl, Diamond and Tourmaline Suite** ARTHUR KING

Comprising a pair of earclips, each set with a baroque cultured pearl, to the textured gold surmount accented by circular-cut diamonds and cabochon tourmaline; a similarly designed ring en suite, mounted in 18K yellow gold, earclips length 1 inch, ring size 4 1/2.

Signed 'Arthur King', with an original box and suede pouch

**Estimate** \$2,500-3,500



9



9

#### **A Diamond and Gold Lady's Wristwatch ROLEX**

Of quartz movement, the circular white dial with gold hands, within a circular-cut diamond surround, to the textured gold link band, mounted in 14K yellow gold, length 7 inches.

Signed 'Rolex'

**Estimate** \$1,500-2,500

PROPERTY OF A LADY

10

#### **A Cultured Pearl Necklace**

Of sixty-five cultured pearls, measuring from approximately 11.38 to 10.11 mm, joined by a polished gold clasp accented with circular-cut diamonds, mounted in 18K yellow gold, length 30 inches.

**Estimate** \$4,000-6,000

10



11



12



13



11

**A Diamond and Gold Ring** BUCCELLATI

Designed as a pierced openwork band, accented by circular-cut diamonds, centering upon an old-cut diamond, weighing approximately 2.50 carats, with engraved gold borders and bezel, mounted in 18K yellow and white gold, size 6 1/4.

Signed 'M.Buccellati'

**Estimate** \$14,000-20,000

13

**A Pair of Gold 'Hawaii' Ear Pendants** BUCCELLATI

Each designed as a cascade of brushed circular gold links, mounted in 18K yellow gold, length 2 1/2 inches.

Signed 'Buccellati 18K Italy', with a suede original pouch

**Estimate** \$2,000-3,000

12

**A Ruby and Diamond Ring**

Set with a cushion-cut ruby, within a baguette-cut and pavé-set diamond bombé surround, mounted in 18K yellow and white gold, size 6.

**Estimate** \$4,000-6,000

14

**A Gold 'Hawaii' Longchain Necklace** BUCCELLATI

Designed as a cascade of brushed circular gold links, mounted in 18K yellow gold, length 40 inches.

Signed 'Buccellati 18K Italy', with a suede original pouch

**Estimate** \$8,000-10,000





15



16



17



18



15

### A Pair of Chrysoprase and Diamond Ear Pendants

MARGHERITA BURGNER

Each designed as a chrysoprase drop, from a pavé-set diamond cap and link, to a pear-shaped cabochon chrysoprase surmount, mounted in 18K white gold, length 2 3/8 inches.

Signed 'Margherita Burgener', with an original pouch

**Estimate** \$6,500-8,000

PROPERTY OF A LADY

16

### A Diamond and Gold 'Happy Diamond' Ring

CHOPARD

Centering on a circular-cut diamond, weighing approximately 0.51 carats, within a crystal surround containing five floating circular-cut diamonds, to the polished gold frame and band, size 6 1/2.

Signed 'Chopard', no.36162

**Estimate** \$2,000-3,000

17

### A Pair of Enamel, Ruby and Gold Cufflinks

DAVID WEBB

Each designed as a polished gold cheetah head, decorated with black enamel and cabochon ruby eyes, to the black enamel swivel link, mounted in 18K yellow gold, length 1 inch.

Signed 'Webb' for David Webb

**Estimate** \$2,500-3,500

18

### A Pair of Diamond, Colored Diamond and Gold Earclips

MARGHERITA BURGNER

Each designed as a sculpted gold leaf, accented by pavé-set diamond and colored diamond trim, mounted in 18K yellow gold, length 1 inch.

Signed 'MB' for Margherita Burgener, with an original pouch

**Estimate** \$3,000-5,000



19



21



20



22



19

**A Diamond and Gold 'Lips' Ring ENIGMA**

Designed as a polished gold ring, the upper lip set entirely with circular-cut diamonds, mounted in 18K rose gold, size 6.

Signed 'Enigma'

**Estimate** \$1,500-2,500

21

**A Gold 'Deco' Cuff Bracelet ENIGMA**

Designed as a polished gold cuff, comprising semi-circular openwork motifs, mounted in 18K rose gold, diameter 2 1/8 inches.

Signed 'Enigma'

**Estimate** \$3,000-5,000

20

**A Pair of Gold 'Foglie' Ear Pendants ENIGMA**

Each designed as a pear-shape plaque, comprising openwork foliate motifs, mounted in 18K rose gold, length 2 3/4 inches.

Signed 'Enigma'

**Estimate** \$1,000-2,000

22

**A Colored Diamond Ring MARGHERITA BURGNER**

Designed as a starfish, set to the top with circular-cut colored diamonds, to the polished gold hoop, mounted in 18K rose gold and silver, size 7 1/4.

Signed 'Margherita Burgener', with an original box

**Estimate** \$3,000-5,000



23

23

#### A Diamond Pendant Necklace

Suspending a rose-cut diamond sphere from a fine link chain, mounted in platinum, length 16 inches.

**Estimate** \$1,500-2,000



24

24

#### A Diamond and Gold Ring

Designed as a bombé dome ring, accented by circular-cut diamonds, mounted in 18K rose gold, size 5 1/4.

**Estimate** \$2,500-3,500



25

25

#### A Pair of Amethyst and Diamond Ear Pendants

MARGHERITA BURGNER

Each suspending an amethyst drop, weighing approximately 23.20 carats in total, from a sculpted gold leaf surmount, accented by pavé-set diamond trim, mounted in 18K yellow gold, length 2 inches, pendant is detachable.

Signed 'MB' for Margherita Burgener, with an original pouch

**Estimate** \$5,000-7,000

26

#### A Chalcedony Longchain Necklace TIFFANY & CO.

Designed as a chalcedony bead longchain, interspersed with a fine link chain, mounted in 18K yellow gold, length 62 inches.

Signed 'T&Co.'

**Estimate** \$2,000-3,000

26



27



28



27

**A Pair of Titanium and Diamond Earclips**

MARGHERITA BURGNER

Each designed as a sculpted purple titanium leaf, accented by pavé-set diamond trim, mounted in 18K yellow gold and titanium, length 1 inch.

Signed 'MB' for Margherita Burgener, with an original pouch

**Estimate** \$1,800-2,500

PROPERTY OF A LADY

28

**A Diamond and Gold Ring**

Designed as a wide band, decorated with circular-cut diamonds within heart-shaped frames and collet-set diamonds, to the polished gold half hoop, mounted in 18K yellow gold, size 5 1/2.

**Estimate** \$800-1,500



29



PROPERTY OF A LADY

29

**A Seed Pearl and Diamond Brooch**

Designed as a circular openwork disc, accented by seed pearl and rose-cut diamonds, suspending seed pearl tassel terminals, mounted in 14K white and yellow gold, length 3 1/2 inches.

**Estimate** \$500-800

30



30

**A Diamond Eternity Band**

Designed as a series of baguette-cut channel-set diamonds, mounted in platinum, size 5 1/2.

**Estimate** \$3,000-5,000

31



31

**An Unheated Color-Change Sapphire and Diamond Ring**

Set to the center with an oval-cut color-change sapphire, weighing approximately 6.44 carats, framed on either side by trapeze-cut diamond shoulders, mounted in platinum, size 6.

With report no.5151285062 dated 21 March 2013 from the Gemological Institute of America, stating that the color-change sapphire weighing 6.44 carats is of Sri Lankan origin, with no indications of heating

**Estimate** \$15,000-20,000

32

**An Antique Diamond Pendant Necklace**

Designed as a garland style pendant, centering on a collet-set old-cut diamond, within a scrolling foliate frame, from a fine link chain accented by collet-set diamonds, mounted in 18K yellow gold and platinum, length 17 inches, pendant is detachable.

**Estimate** \$5,000-7,000

PROPERTY OF A LADY

33

**A Pair of Diamond and Cultured Pearl Earclips**

Each designed as a sculpted shell set with circular-cut diamonds, centering upon a cultured pearl, mounted in platinum, length 1 inch.

**Estimate** \$2,500-3,500



33



32

34



35



PROPERTY OF A LADY

34

#### A Diamond Ring

Set with a circular-cut diamond, weighing approximately 1.60 carats, flanked on either side by a tapered baguette-cut diamond, to the plain hoop, mounted in 18K white gold, size 7.

**Estimate** \$6,000-8,000

35

#### A Diamond Ring

Set with an oval-cut diamond, weighing approximately 1.58 carats, flanked on either side by a tapered baguette-cut diamond, to the plain hoop, mounted in platinum, size 8.

With report no.US 67098502D dated 23 October 2013 from the European Gemological Laboratory, stating that the diamond weighing 1.58 carats is I-J color, VS2 clarity

**Estimate** \$6,000-8,000

36



36

#### A Pair of Amethyst and Diamond Ear Pendants

Each designed as an amethyst drop, weighing approximately 40.62 carats in total, from a circular-cut diamond spacer within a pavé-set diamond surround, mounted in 18K white gold, length 1 3/4 inches.

**Estimate** \$1,800-2,500

37



37

#### An Aquamarine and Diamond Pendant Necklace

MARGHERITA BURGNER

Suspending a pear-shaped aquamarine, weighing approximately 46.78 carats, from a circular-cut diamond spray surmount, to the fine link chain accented by collet-set diamonds, mounted in 18K white gold, length 16 1/2 inches, pendant length 2 3/4 inches.

Signed 'MB' for Margherita Burgener, with an original pouch

**Estimate** \$10,000-15,000

38



38

#### An Aquamarine, Amethyst and Sapphire Ring CHANEL

Of bombé design, centrally set with a cushion-cut aquamarine, within a buff-top sapphire and amethyst surround, to the tapering polished gold half hoop, mounted in 18K white gold, size 6.

Signed 'Chanel' indistinct, with French assay marks, with an original box

**Estimate** \$3,500-5,000

39



39

#### A Ceramic and Gold 'Camélia' Ring CHANEL

Set with a sculpted white ceramic camélia, to the polished gold gallery and half-hoop, mounted in 18K yellow gold, size 7 1/2.

Signed 'Chanel', no.6D1924

**Estimate** \$3,000-5,000





PROPERTY OF A LADY

40

**A Baroque Cultured Pearl, Diamond and Colored Diamond Necklace**

Of twenty-five baroque cultured pearls, measuring from approximately 14.67 to 11.92 mm, accented by pavé-set diamond and colored diamond sphere links, mounted in 18K white gold, length 19 inches.

**Estimate** \$6,000-9,000

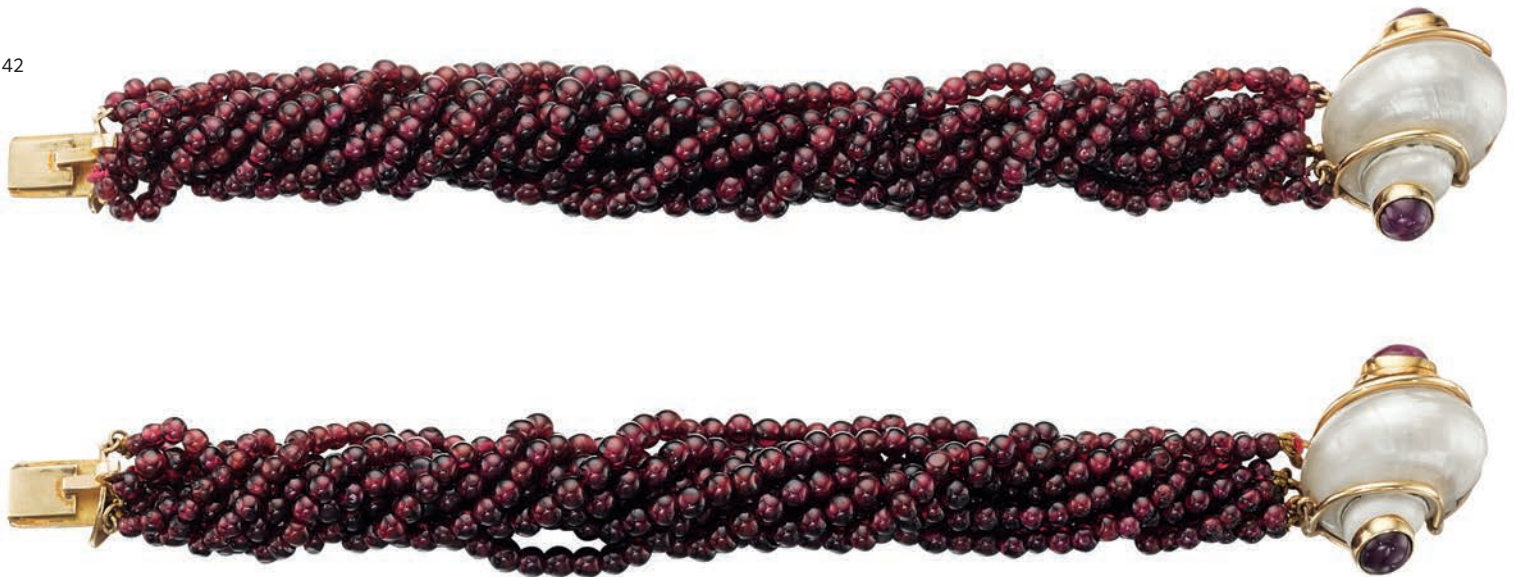
41

**A Pair of Topaz, Cultured Pearl and Diamond Ear Pendants**

Each designed as a pear-shaped blue topaz drop, from a collet-set diamond cluster spacer, to the cultured pearl surmount, mounted in 18K white gold, length 1 1/4 inches.

**Estimate** \$1,500-2,000

42



PROPERTY OF A LADY

42

**A Suite of Ruby, Freshwater Pearl, Shell and Simulated Diamond Jewelry** SEAMAN SCHEPPS

Comprising a ruby bead and freshwater pearl torsade, joined by a sculpted shell clasp, accented by polished gold ridges and cabochon ruby terminals; two similarly designed bracelets and a pair of earclips en suite, mounted in 14K yellow gold, necklace length 34 inches, bracelet length 7 inches, earclips length 1 1/4 inches.

Signed 'P.S.V. of Seaman Schepps'

**Estimate** \$10,000-15,000

Seaman Schepps was an American jeweler known for his colorful retro-style pieces. Schepps opened his first store in Los Angeles in 1904 and later moved to San Francisco in 1914. He experienced rapid success in the trade by selling antique jewelry as well as his own creations and in 1934 opened what would be his most successful undertaking, a store on Madison Avenue. Inspired by his frequent trips to Paris where he admired the works of Verdura and Belperron at Boivin, he began developing his signature style of incorporating colorful gemstones and unique materials such as seashells, corals and wood. Schepps favored sizeable pieces, using unusually cut gemstones that made his imaginative designs stand out from the rest. In the late 1960's, Schepps retired and his daughter Patricia Vaill took control of the firm. In 1992, the business was sold to Anthony Hopenjam and Jay Bauer and they continue to successfully produce pieces in the traditional Schepps style.





43



43

**A Gold 'Panther' Lady's Wristwatch** CARTIER

Of quartz movement, the square cream dial, with Roman numerals and blue-steel hands, to the brick-link bracelet joined by a double deployant buckle, mounted in 18K yellow gold, diameter 2 inches.

Case and dial signed 'Cartier' no.86691113705, with Swiss assay marks

**Estimate** \$4,000-6,000

44



44

**A Peridot and Diamond Cuff Bracelet**

Designed as a wide cuff, centering on three rows of collet-set peridot, accented by circular-cut diamonds, mounted in 18K yellow gold, diameter 2 1/4 inches.

**Estimate** \$10,000-15,000

45



45

**A Pair of Coral and Diamond Ear Pendants**

Each designed as a coral drop, suspended from a collet-set circular-cut diamond link, to the pear-shaped diamond spacer link and cabochon coral surmount, mounted in 18K white gold, length 2 1/2 inches.

**Estimate** \$6,000-8,000

46

**A Gold and Tiger's Eye 'Alhambra' Sautoir Necklace**

VAN CLEEF & ARPELS

Composed of twenty quatrefoil tiger's eye panels, within textured gold borders, interspaced with fine cable-link chain, mounted in 18K yellow gold, length 32 inches.

Signed 'VCA', no.JB037059

**Estimate** \$13,000-16,000

47

**A Peridot and Diamond Ring**

Set with an oval-cut peridot, weighing approximately 10.72 carats, within a circular-cut diamond surround, to the scrolling gallery and shoulders, mounted in 18K yellow gold, size 7.

**Estimate** \$3,000-5,000

46



47





48

49

50

PROPERTY OF A LADY

48

**A Baroque Cultured Pearl Necklace**

Of twenty-three multi-color baroque cultured pearls, measuring from approximately 16.20 to 12.59 mm, joined by a polished gold clasp accented with circular-cut diamonds, mounted in 18K white gold, length 17 inches.

**Estimate** \$3,500-5,000

49

**A Pair of Amethyst and Diamond Ear Pendants**

Each suspending a pear-shaped faceted amethyst, from a collet-set diamond fancy link, to a line of pear-shaped and circular-cut collet-set diamonds and surmount, mounted in platinum, length 2 1/2 inches.

**Estimate** \$6,000-8,000

PROPERTY OF A LADY

50

**A Pair of Cultured Pearl and Diamond Earclips**

Each designed as a circular-cut diamond flower, centering upon a cultured pearl, mounted in 18K yellow and white gold, length 1 inch.

**Estimate** \$2,500-3,500

51

**A Multi-Color Sapphire and Diamond Suite VITA**

Comprising a highly flexible bracelet, designed as a lattice of rose-cut multi-colored sapphires, accented by circular-cut diamonds; a pair of similarly designed earclips en suite, mounted in 18K white gold, bracelet length 7 inches, earclips length 1 1/4 inches.

Signed 'Vita'

**Estimate** \$14,000-18,000



51



52

### **An Amethyst and Diamond Ring** MARGHERITA BURGNER

Set with a cabochon amethyst, weighing approximately 17.70 carats, within a pavé-set diamond surround, mounted in 18K white gold, size 6 1/2.

Signed 'MB' for Margherita Burgener, with an original box

**Estimate** \$3,000-5,000

52



The designer Emanuela Burgener signs her creations in the name of Margherita, her eldest daughter, to whom her jewels are dedicated. Her designs are strikingly modern and fashionable yet maintain the noble traditions of classical Italian jewellery with the exceptional and meticulous craftsmanship established by Margherita's grandfather. In 1966, he founded the Valenza workshop, in northern Italy, where the family continues to work exclusively. A passion and love for the lively colours of aquamarine and other coloured precious gemstones, selected for their highest quality from all over the world, underlie Margherita Burgener's creations.

53



53

**A Pair of Multi-Color Sapphire, Multi-Gem and Diamond Earclips**

Each centering on an oval-cut sapphire and yellow sapphire, weighing approximately 25.72 carats in total, extending a heart-shaped tourmaline and amethyst, accented by collet-set circular-cut diamonds and oval-shaped multi-color sapphires, mounted in 18K yellow gold, length 1 1/2 inches.

**Estimate** \$16,000-20,000

54



54

**A Diamond Brooch**

Designed as a foliate motif brooch, with graduated lines of circular and baguette-cut diamonds, mounted in platinum, length 2 3/4 inches.

**Estimate** \$6,500-8,000

55



55

**A Cultured Pearl, Multi-Color Sapphire and Diamond Suite**

Comprising a necklace, designed as a series of cultured pearls, interspersed by circular-cut diamond clusters and oval-shaped multi-color sapphires, suspending a similarly designed line; a pair of similarly designed ear pendants and ring en suite, mounted in 18K white gold, necklace length 21 inches, ear pendant length 1 3/4 inches, ring size 6 3/4.

**Estimate** \$8,000-10,000

56



PROPERTY OF A GENTLEMAN

56

#### A Gold and Diamond Men's Wristwatch

THE ROYAL DIAMOND BY CHATILA

Of quartz movement, the circular white dial with gold Roman numerals and hands, to the circular-cut diamond frame and black leather band, mounted in 18K yellow gold, length adjustable.

Dial signed 'The Royal Diamond', no.0146 BA 205, with Swiss assay marks, with an original box

**Estimate** \$1,500-2,500

57



PROPERTY OF A LADY

58

#### An Emerald, Onyx, Diamond, Mabé Pearl and Enamel Necklace

Suspending a gold enamelled pendant, set to the front with a lasque-cut diamond within a mabé pearl surround, extending a lasque-cut diamond frame and carved emerald and black onyx terminals, from a carved emerald and black onyx bead line, mounted in 18K yellow gold, length 28 inches.

**Estimate** \$6,000-9,000

PROPERTY OF A LADY

57

#### A Gold, Diamond and Ruby Bracelet

Designed as a highly flexible mesh bracelet, joined by a polished gold clasp, accented by circular-cut diamonds and cabochon ruby terminals, mounted in 18K yellow gold, length 7 inches.

**Estimate** \$2,000-3,000

59

#### A Pair of Diamond and Gold Ear Pendants

Each designed as a sculpted flower decorated with lasque-cut diamonds, suspending a similarly designed pear-shaped drop, accented with enamel detail, mounted in 22K yellow gold, length 2 inches.

**Estimate** \$3,500-5,000



58



59



60



60

**A Coral, Diamond and Jet 'Lips' Pendant Necklace** ENIGMA

Designed as a carved bombé jet disc, centering upon a pavé-set diamond and coral lips, mounted in 18K white gold, length 1 inch, with a black velvet ribbon, length adjustable.

Signed 'Enigma'

**Estimate** \$2,500-3,500

61



61

**A Pair of Enamel and Diamond 'Scacchi' Ear Pendants** ENIGMA

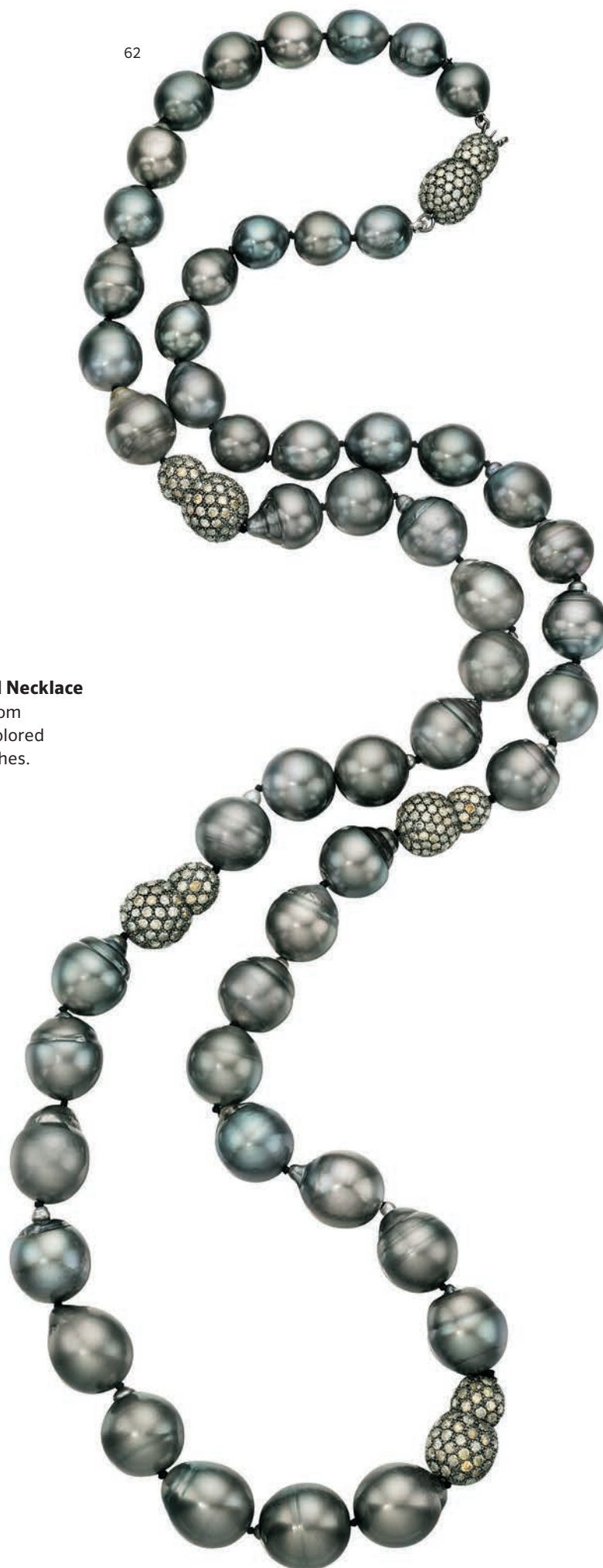
Each designed as a tapering half hoop, enhanced by pavé-set diamond and enamel checkerboard design, mounted in 18K white gold, length 3/4 inches.

Signed 'Enigma'

**Estimate** \$2,500-3,500

Established in 1989, originally as a Neuchâtel-based watch manufacturing company, Enigma has distinguished itself by creating innovative timepieces such as a collection of unusual jumping hours, a unique mechanical watch that rewinds by turning the bezel, and by setting diamonds on steel cases as early as 1991. In 2003, Enigma introduced and launched a fine jewelry collection and currently has international retail stores in Rome, Geneva and Porto Cervo. Enigma jewels are recognizable for their strong, individual designs inspired by Gianni Bulgari, its founder and owner. Gianni Bulgari is the former Chairman and CEO of the eponymous family business, which he left in 1987.

62



62

**A Tahitian Baroque Cultured Pearl and Colored Diamond Necklace**

Of fifty-three Tahitian baroque cultured pearls, measuring from approximately 15.00 to 10.50 mm, accented by circular-cut colored diamond links, mounted in 18K blackened gold, length 35 inches.

**Estimate** \$7,500-9,000



63



64



65



66

63

**A Gold and Diamond Necklace** 1940

Comprising three sculpted roses, each centering on a circular-cut diamond, to the leaf motif backchain; mounted in 14K rose and green gold, length 15 1/2 inches.

**Estimate** \$4,000-6,000

64

**A Gold and Diamond Bracelet** 1940

Comprising three sculpted roses, each centering on a circular-cut diamond, to the leaf motif chain, mounted in 14K rose and green gold, length 7 inches.

**Estimate** \$2,000-3,000



67



68



65

**A Colored Diamond and Diamond Ring**

Set with a cushion-cut colored diamond, weighing approximately 1.04 carats, within a pavé-set diamond surround and half hoop, mounted in platinum, size 6 1/2.

**Estimate** \$4,000-6,000

67

**A Pair of Tiger's Eye, Diamond and Ruby 'Bee' Clips**

Each designed as a carved tiger's eye bee, accented by rose-cut diamonds, to the old-cut diamond wings and ruby eyes, mounted in 14K yellow gold, length 1 1/2 inches.

**Estimate** \$2,000-3,000

66

**An Art Deco Diamond and Sapphire Ring**

Designed as a row of two old-cut diamonds, weighing approximately 3.19 carats in total, within a pierced openwork surround, accented with old-cut diamonds and calibré-cut sapphires, mounted in platinum, size 4 3/4.

**Estimate** \$15,000-20,000

68

**A Diamond, Citrine and Enamel 'Snake' Bracelet**

Designed as a blue enamel snake bracelet of hinged design, to the marquise-cut diamond eyes and pear-shaped citrine crown, mounted in 18K yellow gold, diameter 2 1/4 inches.

**Estimate** \$6,000-8,000

69



70



71



72



69

**A Multi-Gem and Black Jade 'Maltese' Cuff Bracelet** VERDURA

Designed as a wide black jade cuff, centering upon a polished and matte-finished gold Maltese cross, accented with cabochon sapphire, ruby, and collet-set circular-cut diamonds and cultured pearls, mounted in 18K yellow gold, diameter 1 7/8 inches.

Signed 'Verdura'

**Estimate** \$33,000-45,000

70

**A Diamond and Gold Ring** BUCCELLATI

Designed as a pierced openwork band, accented by circular-cut diamonds, centering upon a larger old-cut diamond, weighing approximately 1.30 carats, with engraved gold borders and bezel, mounted in 18K yellow and white gold, size 6 1/2.

Signed 'M.Buccellati'

**Estimate** \$7,500-10,000

71

**A Pair of Emerald, Cultured Pearl, Ruby and Diamond Ear Pendants**

Each surmount set with a cultured mabé pearl, within a polished gold border, extending collet-set circular-cut diamonds and cabochon ruby, to the similarly designed links and emerald bead tassel terminals, mounted in 18K yellow gold, length 4 inches.

**Estimate** \$5,000-7,000

72

**A Pair of Jade, Lapis Lazuli and Gold Earclips**

ALDO CIPULLO 1974

Each designed as a square jade panel, accented by four cabochon lapis lazuli, within polished gold detail, mounted in 18K yellow gold, length 1 1/4 inches.

Signed 'A.Cipullo', 'Cartier', ©1974

**Estimate** \$4,500-6,500

73



74



73

**A Gold and Diamond Necklace** DAVID WEBB

Designed as a graduated necklace, composed of polished rope-twist motif links, joined by pavé-set diamond arc-shaped links, mounted in 18K yellow gold and platinum, length 16 inches.

Signed 'Webb' for David Webb

**Estimate** \$18,000-22,000

74

**A Pair of Enamel and Diamond Earclips** DAVID WEBB

Each designed as a bombé white enamel hoop, accented by circular-cut diamond panels, mounted in platinum and 18K yellow gold, length 1 3/8 inches.

Signed 'Webb' for David Webb

**Estimate** \$8,000-10,000



75



76

77



75

**A Diamond, Gold, Platinum and White 'Pailloné' Enamel Bangle Bracelet** SCHLUMBERGER FOR TIFFANY & CO.

Designed as a white Pailloné enamel hinged bangle, decorated with collet-set circular-cut diamonds, with fluted gold vertical bands, mounted in 18K yellow gold and platinum, diameter 2 1/4 inches. Signed 'Tiffany & Co. Schlumberger 750 France'

**Estimate** \$30,000-40,000

77

**A Sapphire and Diamond Dress Set**

Comprising a pair of cufflinks, each designed as a checker-board plaque invisibly-set with square-cut sapphires within a circular-cut diamond border, to a similarly designed swivel link; and four shirt studs en suite, cufflink length 3/4 inches, shirt stud length 3/4 inches.

**Estimate** \$8,000-10,000

76

**A Diamond, Gold, Platinum and Blue 'Pailloné' Enamel Bangle Bracelet** SCHLUMBERGER FOR TIFFANY & CO.

Designed as a blue Pailloné enamel hinged bangle, decorated with collet-set circular-cut diamonds, with fluted gold vertical bands, mounted in 18K yellow gold and platinum, diameter 2 1/4 inches. Signed 'Tiffany & Co. Schlumberger 750 France'

**Estimate** \$30,000-40,000

78

**A Diamond and Gold Longchain Necklace** TIFFANY & CO.

Designed as a series of circular-cut diamond plaques, connected throughout with polished gold links, mounted in platinum and 18K yellow gold, length 33 inches, can be worn as two shorter necklaces. Signed 'Tiffany & Co.'

**Estimate** \$32,000-38,000







79

80

PROPERTY OF A LADY

79

**A Cultured Pearl Necklace**

Of thirty-nine cultured pearls, measuring from approximately 12.30 to 9.26 mm, joined by a polished gold clasp, mounted in 18K yellow gold, length 17 inches.

**Estimate** \$2,000-3,000

80

**An Antique Pair of Diamond Bow Earclips**

Each designed as an articulated old-cut diamond bow, centering upon an old-cut diamond, mounted in silver-topped gold, length 2 1/2 inches.

**Estimate** \$12,000-15,000

81



81

**An Antique Sapphire and Diamond Bracelet**

Set to the top with circular-cut sapphires and old-cut diamonds, to the polished gold hoop, mounted in 18K yellow gold, diameter 2 1/4 inches. With Russian assay marks

**Estimate** \$5,000-7,000

82



83



84



85



82

#### A Pair of Antique Diamond Ear Pendants

Each designed as a line of collet-set old-cut diamonds, weighing approximately 13.80 carats in total, mounted in silver-topped gold, length 1 1/4 inches.

With a fitted box

**Estimate** \$65,000-75,000

84

#### An Art Deco Emerald and Diamond Ring

Set to the center with a rectangular-cut diamond, framed by two rectangular-cut emeralds, to the pavé-set diamond gallery and half hoop, mounted in platinum, size 6 1/2.

Please inquire with the Jewelry department for certificate information

**Estimate** \$18,000-22,000

83

#### An Art Deco Diamond Bracelet

Designed as a series of circular-cut diamond rectangular plaques, each centering upon a row of old-cut diamonds, joined by a pavé-set diamond link centering upon a marquise and baguette-cut diamond, mounted in platinum, length 7 1/2 inches.

**Estimate** \$18,000-20,000

PROPERTY OF A GENTLEMAN

85

#### A Diamond Ring

Set with a circular-cut diamond, weighing approximately 4.13 carats, to the polished hoop, mounted in platinum, size 7.

With report no.1152677227 dated 24 September 2013 from the Gemological Institute of America, stating that the diamond weighing 4.13 carats is K color, VS2 clarity

**Estimate** \$20,000-30,000

86



86

#### A Pair of Diamond and Colored Diamond Ear Pendants

Each suspending a pavé-set diamond and colored diamond bombé plaque, from a circular-cut diamond link, to a pear-shaped pavé-set diamond surmount, mounted in 18K rose gold, length 2 1/4 inches.

**Estimate** \$13,000-15,000

87



87

#### An Amethyst and Diamond Bracelet

Designed as a series of alternating cushion-cut amethysts, weighing approximately 206.62 carats in total, and pavé-set circular-cut diamond spacers, mounted in 18K white gold, length 7 1/2 inches.

**Estimate** \$20,000-25,000

88



88

#### A Pair of Kunzite and Diamond Ear Pendants

Each suspending a pear-shaped kunzite, weighing approximately 51.23 carats in total, from a circular-cut diamond line, mounted in 18K white gold, length 3 1/4 inches.

**Estimate** \$3,000-5,000



89



89

### A Pair of Pink Sapphire and Diamond Earclips

Each designed as a sculpted flower decorated with circular-cut pink sapphires, centering on a pavé-set diamond cluster, mounted in 18K white gold, length 1 1/8 inches.

**Estimate** \$2,000-4,000

PROPERTY OF A LADY

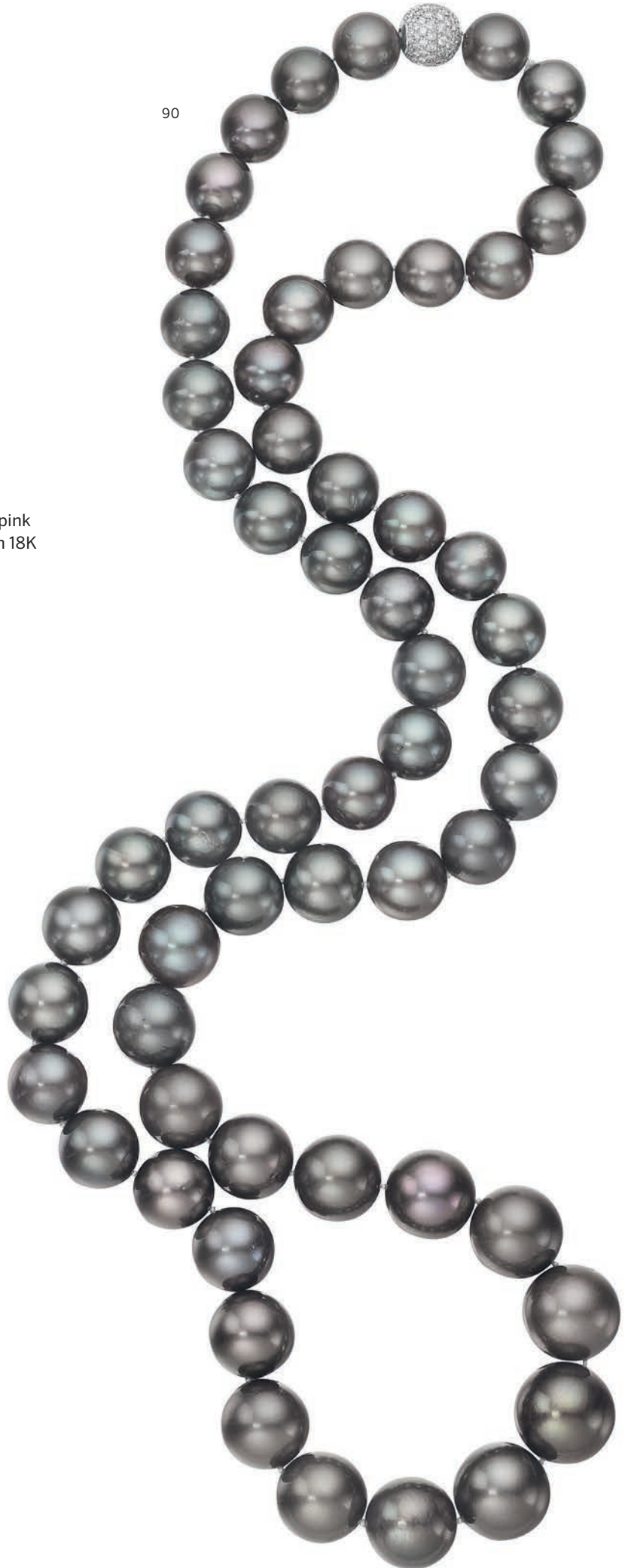
90

### A Tahitian Cultured Pearl Necklace

Of fifty-seven Tahitian cultured pearls, measuring from approximately 17.10 to 13.07 mm, joined by a pavé-set diamond sphere clasp, mounted in 18K white gold, length 34 inches.

**Estimate** \$12,000-16,000

90



91



91

#### A Pink Tourmaline and Diamond Ring

Set with a square-cut pink tourmaline, weighing approximately 32.05 carats, within a pavé-set diamond bombé frame, mounted in 18K white gold, size 6 1/2.

**Estimate** \$12,000-16,000

93



92

#### A Pair of Hematite and Onyx Earclips TIFFANY & CO.

Each designed as a square gold plaque with alternating onyx and hematite panels, mounted in 18K yellow gold, length 3/4 inches. Signed 'T&Co', '1982'

**Estimate** \$2,200-3,200

93

#### A Pair of Ruby and Diamond Ear Pendants

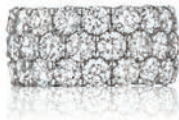
Each designed as two staggered lines of oval-shaped cabochon ruby, within a circular-cut diamond surround, mounted in 18K white gold, length 2 1/2 inches.

**Estimate** \$15,000-20,000



94

95



96



95

#### **A Diamond Eternity Band**

Designed as a wide eternity band, set with three rows of circular-cut diamonds, weighing approximately 12.00 carats in total, mounted in 18K white gold, size 6.

**Estimate** \$11,000-13,000

96

#### **A Pair of Cultured Pearl and Yellow Sapphire Ear Pendants**

VERDURA

Each suspending a cultured baroque pearl, measuring approximately 14.00 mm, from a pavé-set yellow sapphire cap to the circular-cut yellow sapphire spacer and cultured-pearl surmount, mounted in 18K yellow gold, length 1 3/4 inches.

Signed 'Verdura'

**Estimate** \$8,500-12,000

PROPERTY OF A LADY

94

#### **A Rock Crystal, Diamond and Gold Choker Necklace**

MAUBOUSSIN

Designed as three graduated rows of rock crystal spheres with connecting polished gold tapered links, the central nine spheres accented by circular-cut diamonds, mounted in 18K yellow gold, diameter 4 1/2 inches.

Signed 'Mauoussin Paris', no.1504, with an original box

**Estimate** \$8,000-12,000

97



98



99



97

**A Pair of Diamond Earclips**

Each designed as a pear-shape and marquise-cut diamond foliate spray, accented by tapered baguette-cut diamonds, mounted in 14K white gold, length 1 1/4 inches.

**Estimate** \$15,000-20,000

98

**A Diamond Brooch** CARTIER

Designed as a circular and baguette-cut diamond flower, extending circular-cut diamond leaves to the baguette-cut diamond stem, mounted in platinum, length 2 1/4 inches.  
Signed 'Cartier', no.81341

**Estimate** \$8,000-10,000

99

**A Gold and Diamond Cuff Bracelet**

Designed as a sculpted and textured gold foliate motif cuff, accented by old-cut diamonds, mounted in 18K rose and yellow gold, diameter 2 inches.  
Signed 'Buccellati'

**Estimate** \$20,000-25,000



100



100

**A Pair of Turquoise and Diamond Ear Pendants** DAVID WEBB

Each suspending an oval cabochon turquoise within a circular-cut diamond frame, to the circular-cut diamond spacer link and diamond foliate spray surmount, mounted in 18K yellow gold, length 2 3/4 inches, pendant is detachable.

Signed 'Webb' for David Webb

**Estimate** \$35,000-40,000

102



101



103



PROPERTY OF A LADY

101

### A Lady's Diamond and Platinum Wristwatch

VAN CLEEF & ARPELS

Of mechanical movement, the white circular dial, with black Arabic numerals and blue steel hands, within a circular-cut diamond surround, to the circular-cut diamond link and black silk band, joined by a stainless steel buckle, length adjustable.

Dial signed 'Van Cleef & Arpels', with a suede original pouch

**Estimate** \$6,000-8,000

103

### A Pair of Cultured Pearl and Diamond Ear Pendants

Each suspending a cultured baroque pearl measuring approximately 11.78 mm, from a pavé-set diamond cap, to the pear-shape, marquise and circular-cut diamond spray surmount, mounted in platinum and 18K white gold, length 1 3/4 inches, pendant is detachable.

**Estimate** \$15,000-20,000

102

### A Pink Sapphire and Diamond Ring

TIFFANY & CO.

Set with a cushion-cut pink sapphire, weighing approximately 1.49 carats, within a pavé-set diamond surround and gallery, mounted in platinum, size 8 1/2.

Signed 'Tiffany & Co.', with a suede original pouch

**Estimate** \$2,500-3,500

104

### A Diamond and Sapphire Brooch

Designed as a pierced, openwork pavé-set diamond plaque, centering upon an oval-cut sapphire, mounted in platinum and 18K yellow gold, length 2 inches.

With report no.5151337308 dated 5 April 2013 from the Gemological Institute of America, stating that the sapphire is of Thai origin, with no indications of heating

**Estimate** \$12,000-14,000

104



105



106



107



108



PROPERTY OF A GENTLEMAN

105

**A Diamond Ring**

Set with a marquise-cut diamond, weighing approximately 4.82 carats, framed on either side by baguette-cut diamond shoulders, mounted in platinum, size 5 1/2.

With report no.1152677256 dated 2 October 2013 from the Gemological Institute of America, stating that the diamond weighing 4.82 carats is J color, VS2 clarity

**Estimate** \$15,000-25,000

107

**A Diamond and Sapphire Ring 1940**

Set with an old-cut diamond, weighing approximately 3.50 carats, within an invisibly-set sapphire frame, mounted in platinum, size 6 1/4.

**Estimate** \$20,000-22,000

106

**An Art Deco Sapphire and Diamond Bracelet 1930**

Designed as a series of buckle-shaped links, decorated with square-cut sapphires and circular and baguette-cut diamond links, mounted in platinum, length 7 1/2.

**Estimate** \$25,000-30,000

PROPERTY OF A LADY

108

**A Diamond and Sapphire Ring CARTIER**

Of geometric design, set to the center with circular-cut diamonds, within a calibr -cut sapphire two-row frame, mounted in platinum, size 4 1/2.

Signed 'Cartier', no.20899

**Estimate** \$6,000-9,000

109



110



111



110

**A Ruby and Diamond Bracelet**

Designed as a line of rectangular-cut rubies, interspersed with circular-cut diamonds, mounted in platinum, length 7 inches.

**Estimate** \$5,500-7,000

109

**A Pair of Ruby and Diamond Earclips**

Each designed as a baguette and square-cut diamond spray surmount, suspending a detachable calibré-cut ruby drop from a pavé-set diamond cap, mounted in 18K and 14K white gold, length 2 inches.

**Estimate** \$12,000-15,000

111

**A Pair of Coral and Diamond Ear Pendants**

Each designed as a coral drop, suspended from a collet-set circular-cut diamond link, to the pavé-set diamond line surmount, mounted in 18K white gold, length 1 1/2 inches.

**Estimate** \$1,000-2,000



112



113

112

**A Cultured Pearl, Ruby and Diamond Longchain Necklace**

Composed of two longchains, each designed as a cultured pearl longchain interspersed by briolette-cut diamond and ruby beads, mounted in platinum, length 36 and 39 inches.

**Estimate** \$12,000-15,000

113

**A Pair of Diamond Hoop Earrings**

Each designed as a pavé-set diamond hoop, mounted in 18K white gold, length 1 1/4 inches.

**Estimate** \$8,000-10,000

114



115



116



114

**A Pair of Gold and Diamond Earclips BUCCELLATI**

Each designed as a brushed yellow gold button earclip, set with circular-cut diamonds, within engraved white gold detail, mounted in 18K yellow gold, length 7/8 inches.

Signed 'M. Buccellati'

**Estimate** \$8,000-10,000

115

**A Pair of Cultured Pearl and Colored Diamond Earclips**

Each set with a cultured pearl, measuring approximately 12.00 mm, within an oval-cut colored diamond surround, mounted in 18K yellow gold, length 3/4 inches.

**Estimate** \$5,000-7,000

116

**An Emerald and Gold Suite BUCCELLATI**

Comprising a brushed gold cuff, set with cabochon emerald, within engraved details, accented with applied gold dots; a similarly designed ring en suite, mounted in 18K yellow gold, diameter 2 1/4 inches, ring size 6 1/2.

Signed 'Buccellati', 'M. Buccellati'

**Estimate** \$18,000-22,000

117



118



119



117

**A Retro Diamond and Ruby Ring**

Of bombé design, centering on an old-cut diamond, weighing approximately 1.75 carats, accented by star-set circular-cut rubies, mounted in 18K yellow gold, size 6 1/4.

With French assay marks

**Estimate** \$8,000-10,000

PROPERTY OF A LADY

118

**A Diamond Ring** KUTCHINSKY

Designed as a circular and tapered baguette-cut diamond spray ring, mounted in 18K white gold, size 7.

Signed 'Kutchinsky'

**Estimate** \$4,000-6,000

119

**A Retro Gold and Diamond Bracelet** BOUCHERON

Centering on two polished gold plaques, accented by star-set circular-cut diamonds, to the rope-twist chain interspaced with polished gold links, mounted in 18K yellow gold, length 7 1/4 inches.

Signed 'Boucheron-Paris', with French assay marks

**Estimate** \$5,000-7,000

120



120

**A Cultured Pearl and Diamond Necklace**

Designed as two rows of circular-cut diamonds, suspending a circular-cut diamond line with cultured pearl terminals, mounted in 18K white gold, length 22 inches.

**Estimate** \$15,000-18,000

121



121

**A Diamond Ring**

Designed as a pavé-set diamond bombé ring, mounted in 18K white gold, size 6 3/4.

**Estimate** \$4,000-6,000



122



PROPERTY OF A LADY

122

**A Jade, Mabé Pearl and Sapphire Suite** TRIANON

Comprising a wide jade cuff, accented by mabé pearls and cabochon sapphires within a polished gold surround; a pair of similarly designed earclips en suite, mounted in 14K yellow gold, bracelet diameter 2 inches, earclips length 3/4 inches.

Signed 'Trianon'

**Estimate** \$2,500-3,500

123



123

**A Pair of Diamond and Cultured Pearl Ear Pendants**

Each designed as a tapered flexible drop, accented by collet-set circular-cut diamonds, to the cultured pearl tassel terminals, mounted in 14K white gold, length 3 inches.

**Estimate** \$2,500-3,500



124

**A Pair of Diamond and Titanium Hoop Earrings**

Each designed as a three row graduated pavé-set diamond hoop, mounted in titanium and 18K white gold, length 2 3/4 inches.

**Estimate** \$10,000-15,000

125

**A Sapphire and Diamond Bracelet**

Of springband design, with three bombé plaques, set with oval and circular-cut sapphires, to the pavé-set diamond spacer links, mounted in 18K white gold, diameter 2 1/4 inches.

**Estimate** \$12,000-18,000

127

**A Tanzanite and Diamond Ring**

Set with a rectangular-cut tanzanite, weighing approximately 31.17 carats, to the circular-cut diamond shoulders, mounted in platinum, size 6 1/4.

**Estimate** \$15,000-20,000

126

**A Diamond and Multi-Color Sapphire Scarab Necklace**

Composed of a series of alternating pavé-set diamond links and scarab-shaped plaques set throughout with multi-color sapphires and pavé-set diamonds, mounted in 18K white gold, length 17 inches.

Signed 'Valente Milano', with Italian assay marks

**Estimate** \$8,000-10,000

128

**A Pair of Amethyst, Turquoise, Topaz and Diamond Ear Pendants** MARGHERITA BURGNER

Each suspending a pear-shaped faceted amethyst, weighing approximately 63.31 carats in total, from a circular-cut diamond and topaz link, to the square cabochon turquoise surmount, within a pavé-set diamond surround, mounted in 18K white gold, length 3 inches, pendant is detachable.

Signed 'Margherita Burgener', with an original pouch

**Estimate** \$8,500-10,000

126



127



128



129



130



131



129

### **An Aquamarine, Diamond and Titanium Cuff Bracelet**

MARGHERITA BURGNER

Set to the top with a rectangular-cut aquamarine weighing approximately 67.43 carats, to the three band circular-cut diamond cuff, mounted in titanium, diameter 2 1/8 inches.

Signed 'Margherita Burgener', no.30761301, with an original box

**Estimate** \$10,000-15,000

131

### **A Pink Sapphire and Diamond Ring**

Designed as an oval and circular-cut pink sapphire bombé ring, accented with circular-cut diamonds, mounted in 18K rose gold, size 7 3/4.

**Estimate** \$3,800-4,800

130

### **A Pair of Diamond Ear Pendants**

Each suspending an oval-shaped rose-cut diamond plaque, within a pavé-set diamond surround, from a collet-set circular-cut diamond spacer, to the similarly designed surmount, mounted in 18K white gold, length 1 1/2 inches, pendant is detachable.

**Estimate** \$4,000-5,000

PROPERTY OF A LADY

132

### **A South Sea Baroque Cultured Pearl Necklace**

Of twenty-seven South Sea baroque cultured pearls, measuring from approximately 16.00 to 13.45 mm, joined by a pavé-set diamond sphere clasp, mounted in 18K white gold, length 17 1/2 inches.

**Estimate** \$7,000-10,000





133

**A Pair of Diamond Earclips**

Each designed as a sculpted pavé-set diamond flower, centering on a circular-cut diamond floret, mounted in 18K white gold, length 1 1/4 inches.

**Estimate** \$5,000-7,000

134



134

**A Pair of Kunzite, Lemon Quartz, Multi-Color Sapphires and Diamond Ear Pendants**

Each suspending a briollette cluster drop, composed of kunzite, lemon quartz and multi-color sapphires, from a pavé-set diamond cap and circular-cut diamond spacer, to the oval-cut kunzite and lemon quartz surmount within a circular-cut kunzite and lemon quartz surround, mounted in 18K white gold, length 2 inches.

**Estimate** \$3,500-5,000

135



136



137



135

**A Diamond, Chalcedony, Emerald and Enamel Brooch**

DAVID WEBB

Centering on a sculpted tiger head, decorated with black and white enamel stripes, accented by a circular-cut diamond crest and cabochon emerald eyes, within a navette-shaped cabochon green chalcedony surround, mounted in 18K yellow gold, length 2 inches.

Signed 'Webb' for David Webb

**Estimate** \$10,000-15,000

136

**An Important Diamond and Gold Cuff Bracelet** BUCCELLATI

Designed as a textured yellow gold hinged cuff, set with three circular-cut diamond navette-shaped panels, within engraved gold detail, mounted in 18K yellow gold, diameter 2 1/4 inches.

Signed 'M.Buccellati'

**Estimate** \$30,000-35,000



138



139



140

137

**A Pair of Gold Earclips BUCCELLATI**

Each designed as a branch of textured gold leaves, from an engraved branch, mounted in 18K yellow and white gold, length 1 3/4 inches.

Signed 'M.Buccellati' 'Italy', with a suede original pouch

**Estimate** \$2,500-3,500

139

**A Set of Diamond Bracelets**

Each designed as a hinged bombé bangle, entirely set with circular-cut diamonds, mounted in 18K rose and white gold, diameter 2 1/4 inches.

**Estimate** \$15,000-20,000

138

**A Pair of Chrysoprase, Chrome Diopside and Diamond Ear Pendants MARGHERITA BURGNER**

Each suspending a chrysoprase drop, from a pavé-set diamond link, to the chrome diopside line and pavé-set diamond surmount, mounted in 18K white gold, length 1 3/4 inches.

Signed 'MB' for Margherita Burgener, with an original pouch

**Estimate** \$3,000-5,000

140

**A Diamond and Gold Ring Set MARGHERITA BURGNER**

Composed of a set of three bombé rings, the front entirely decorated with circular-cut diamonds to the plain hoop, mounted in 18K yellow, white and rose gold, size 7.

Signed 'MB' for Margherita Burgener, with an original box

**Estimate** \$5,000-7,000

141



142



143



144



145



141

### An Art Deco Jade, Diamond and Enamel Box CARTIER

Of rectangular form, designed as an enameled cigarette box, centering on a carved jade plaque, accented with rose-cut diamond borders, mounted in 14K yellow gold, measures 3 x 2 x 1/2 inches.

Signed 'Cartier', no.52659

**Estimate** \$8,000-10,000

142

### A Ruby and Diamond Ring VAN CLEEF & ARPELS 1987

Set with a heart-shaped ruby, weighing approximately 3.50 carats, within a circular and baguette-cut diamond frame, to the circular-cut diamond shoulders, mounted in 18K yellow gold, size 6 1/4.

Signed 'VCA', no.NY4188SO, with a letter of authenticity

**Estimate** \$20,000-26,000

143

### A Pair of Victorian Diamond and Enamel Ear Pendants

Each suspending a polished gold bombé drop, set with old-cut diamonds within floral motif enamel accents, to a similarly designed surmount, mounted in 18K yellow gold, length 1 1/4 inches.

**Estimate** \$15,000-17,000

144

### A Pair of Onyx and Diamond Cufflinks

VAN CLEEF & ARPELS 1900

Each designed as a double-sided black onyx plaque, centering on an old-cut diamond and rose-cut diamonds to each corner, mounted in 18K yellow gold, length 1 inch.

Signed 'VCA', no.91002, with French assay marks, with an original fitted box

**Estimate** \$3,000-5,000

145

### An Antique Emerald and Diamond Dress Set 1885

Comprising a pair of cufflinks, each double link centering on a round cabochon emerald, accented by rose-cut diamonds; and four dress shirt studs en suite, mounted in 18K yellow gold, cufflinks length 1 1/8 inch, shirt studs length 1/4 inch.

no.907, with French assay marks

**Estimate** \$2,000-3,000



142



146



147



SIDE VIEW

148



146

**A Diamond Brooch**

Designed as a three petal flower brooch, set with two pear-shaped pink sapphires and a pear-shaped diamond, to the polished gold stem and old-cut diamond cluster, mounted in 14K yellow gold, length 1 3/4 inches.

With a fitted box

**Estimate** \$10,000-15,000

PROPERTY OF A LADY

147

**An Emerald and Diamond 'Trombino' Ring BULGARI**

Set with a cabochon emerald, within a circular and baguette-cut diamond bombé surround, mounted in platinum, size 6.

Signed 'Bulgari', with an original box

**Estimate** \$35,000-45,000

148

**A Pair of Diamond Studs**

Each set with a square-cut diamond, weighing approximately 1.50 and 1.62 carats, within a circular-cut diamond surround, mounted in 18K yellow gold and platinum, length 1/4 inch.

With report no.5131465727 dated 26 May 2011 from the Gemological Institute of America, stating that the diamond weighing 1.50 carats is I color, VS1 clarity

With report no.2135465751 dated 26 May 2011 from the Gemological Institute of America, stating that the diamond weighing 1.62 carats is I color, VS1 clarity

**Estimate** \$13,000-16,000

149



149

**A Ruby and Diamond Suite**

Comprising a necklace designed as a graduated fringe of circular-cut diamonds and cabochon rubies within a circular and marquise-cut diamond surround; a pair of similarly designed ear pendants en suite, mounted in platinum, necklace length 16 1/2 inches, earclips length 2 1/2 inches.

**Estimate** \$48,000-55,000

150



151



150

### A Pair of Diamond Ear Pendants

Each designed as a series of cascading marquise-cut diamonds, to the pear-shaped diamond surmount, mounted in platinum, length 2 1/8 inches.

**Estimate** \$28,000-35,000

152

### A Diamond Necklace

Composed of a series of collet-set pear-shaped, circular and marquise-cut diamonds, mounted in platinum, length 18 1/2 inches.

**Estimate** \$7,000-9,000

151

### An Art Deco Diamond and Gem-Set Charm Bracelet

The fine oval link chain, suspending eight vari-cut diamond and multi-gem charms, mounted in platinum, length 7 inches.

**Estimate** \$11,000-13,000

153

### A Pair of Diamond and Gold Earclips MARGHERITA BURGNER

Each designed as a pavé-set diamond bow, mounted in 18K white gold, length 1 inch.

Signed 'Margherita Burgener', with an original pouch

**Estimate** \$4,000-6,000





154

**An Edwardian Emerald and Diamond Ring**

Set to the center with an octagonal step-cut emerald, weighing approximately 3.40 carats, to the circular-cut diamond shoulders, mounted in platinum, size 6 1/4.

With report no.CS 39820 dated 26 June 2008 from the American Gemological Laboratories, stating that the emerald is of Colombian origin, with indication of faint clarity enhancement

**Estimate** \$25,000-30,000

154



155

**A Diamond Ring**

Set with a square-cut diamond, weighing approximately 2.06 carats, within a pavé-set diamond surround and half hoop, mounted in platinum, size 5 3/4.

With report no.2121452625 dated 10 August 2010 from the Gemological Institute of America, stating that the diamond weighing 2.06 carats is I color and VVS2 clarity

**Estimate** \$16,000-22,000

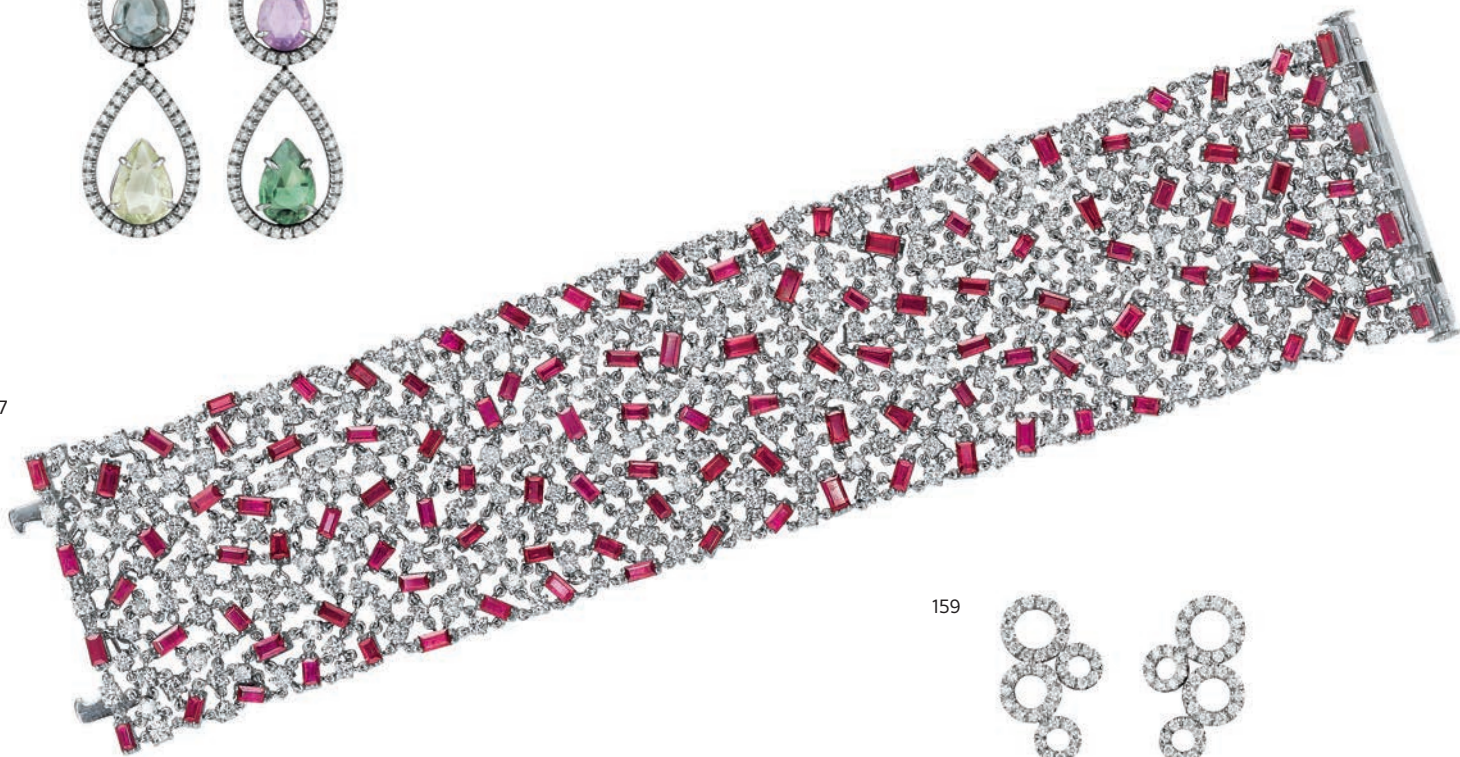
155



156



157



158



159



156

**A Pair of Multi-Color Sapphire, Diamond and Titanium Ear Pendants** MARGHERITA BURGNER

Each designed as a series of graduated pear-shaped multi-color sapphires, within pavé-set diamond links, mounted in 18K yellow gold and titanium, length 2 1/2 inches.

With an original pouch

**Estimate** \$4,000-6,000

158

**An Amethyst and Diamond Ring**

Set with a cushion-cut amethyst, weighing approximately 50.64 carats, to the circular-cut diamond shoulders and gallery, mounted in 18K white gold, size 6.

**Estimate** \$3,500-5,000

157

**A Ruby and Diamond Bracelet**

Of flexible design, the wide openwork band entirely set with circular-cut diamonds and baguette and tapered baguette-cut rubies, mounted in 18K white gold, length 7 inches.

**Estimate** \$15,000-20,000

159

**A Pair of Amethyst and Diamond Ear Pendants**

MARGHERITA BURGNER

Each suspending an amethyst drop, weighing approximately 24.98 carats in total, from a pavé-set diamond cap, to the pavé-set diamond swirl surmount, mounted in 18K white gold, length 2 inches.

Signed 'Margherita Burgener', with an original pouch

**Estimate** \$3,500-5,000

162



160

**A South Sea Baroque Cultured Pearl Necklace**

Of twenty-five South Sea baroque cultured pearls, measuring from approximately 16.12 to 13.96 mm, joined by a polished gold clasp accented with circular-cut diamonds, mounted in 14K white gold, length 18 inches.

**Estimate** \$5,500-7,000

160

161



161

**A Pair of Chalcedony, Multi-Color Sapphire and Diamond Earclips** MARGHERITA BURGNER

Each set with an oval cabochon chalcedony, within a circular-cut multi-color sapphire and diamond surround, mounted in 18K white gold, length 1 1/8 inches.

Signed 'MB' for Margherita Burgener, with an original box

**Estimate** \$5,500-7,000

162

**An Aquamarine and Diamond Ring** MARGHERITA BURGNER

Centering upon a rectangular-cut aquamarine weighing approximately 30.94 carats, within a circular-cut diamond surround, mounted in 18K white gold, size 7.

Signed 'MB' for Margherita Burgener, with an original box

**Estimate** \$10,000-15,000



PROPERTY OF A LADY

163

**An Antique Emerald and Diamond Bracelet**

Designed as an engraved openwork plaque, set to the center with a square-cut emerald, accented by old-cut diamonds, to the flexible gold detachable band, mounted in 18K yellow gold, diameter 2 inches.

With an original fitted box

**Estimate** \$6,000-8,000

164

**A Pair of Emerald and Diamond Earclips** BUCCELLATI

Each designed as a pierced openwork foliate disc, accented by circular-cut diamonds, centering upon an oval-cut emerald, with engraved gold borders and bezel, mounted in 18K white and yellow gold, length 1 inch. Signed 'M.Buccellati', 'Italy'

**Estimate** \$9,000-10,000

165

**An Emerald and Diamond Ring** BUCCELLATI

The wide tapering brushed gold band centering upon an oval-cut emerald, accented by pierced openwork circular-cut diamond detail, mounted in 18K yellow and white gold, size 5 1/2.

Signed 'M.Buccellati', 'Italy'

**Estimate** \$7,000-9,000



166



166

**An Antique Diamond Necklace**

Designed as a row of graduated old-cut diamond links, centering on collet-set old-cut diamonds, suspending collet and pavé-set old-cut diamond garland motifs, mounted in silver-topped gold, length 14 inches.

**Estimate** \$45,000-50,000

167



167

### A Gold 'Tubogas' Lady's Wristwatch BULGARI

Of quartz movement, the circular black dial, with gold hands, to the polished gold spring band bracelet, mounted in 18K yellow and white gold, diameter 1 1/2 inches.

Case and dial signed 'Bulgari', case no.BB191T, P40091, with Swiss assay marks

**Estimate** \$12,000-15,000

168

### A Pair of Titanium and Gold Earclips JAR

Each designed as a sculpted deep red titanium rose petal, mounted in 18K yellow gold and titanium, length 1 3/4 inches.

Signed 'JAR Paris', with French assay marks and maker's mark, with a suede original pouch

**Estimate** \$2,000-3,000

168



170



PROPERTY OF A LADY

169

### A Pair of Citrine, Onyx, Carnelian and Diamond Ear Pendants MARINA B.

Each suspending a heart-shaped citrine, from a circular-cut diamond and carved onyx link, to a cabochon carnelian and circular-cut diamond teardrop shape surmount, mounted in 18K yellow gold, length 1 1/2 inches. Signed 'Marina B.', 'France', no.K970, A42, A8K130, with French assay marks

**Estimate** \$3,000-5,000

170

### A Citrine and Diamond Ring

Set with an oval cabochon citrine, to the marquise-cut diamond shoulders, mounted in platinum and 18K yellow gold, size 5.

**Estimate** \$2,500-3,500

171



172



173



174



171

**A Coral and Diamond Ring** DAVID WEBB

Centering upon a cabochon coral, extending a circular-cut diamond bombé scale surround, mounted in 18K yellow gold and platinum, size 5. Signed 'David Webb'

**Estimate** \$8,000-10,000

173

**A Gold and Ruby Bracelet** TIFFANY & CO.

Composed of a series of textured gold leaf panels, accented by circular-cut rubies, mounted in 18K yellow gold, length 7 1/4 inches. Signed 'Tiffany & Co.'

**Estimate** \$4,000-6,000

172

**A Pair of Gold Earclips** DAVID WEBB

Each designed as a wide textured gold bombé hoop, mounted in 18K yellow gold, length 1 1/2 inches. Signed 'David Webb'

**Estimate** \$4,500-5,500

174

**A Pair of Mother-of-Pearl and Gold Earclips** TIFFANY & CO.

Each designed as a stylized crescent-shaped plaque, inlaid with mother-of-pearl, mounted in 18K yellow gold, length 1 1/4 inches. Signed 'T&Co.'

**Estimate** \$2,500-3,500

175



176



177



175

**A Diamond and Gold Ring** VAN CLEEF & ARPELS

Of textured bombé design, accented by circular-cut diamond florets, mounted in 18K yellow gold, size 6 1/2.

Signed 'Van Cleef & Arpels', no.18202

**Estimate** \$7,500-9,000

176

**A Pair of Ruby and Diamond Earclips**

Each designed as a circular-cut ruby and diamond half-hoop, mounted in 18K white gold, length 1 1/8 inches.

**Estimate** \$8,000-10,000

PROPERTY OF A LADY

177

**An Emerald and Gold Cuff Bracelet** BOUCHERON

Designed as a wide polished gold cuff, set to the top with a carved cabochon emerald, mounted in 18K yellow gold, diameter 2 inches.

Signed 'Boucheron', 'Paris', with French assay marks

**Estimate** \$6,000-8,000





178

**A Cultured Pearl Necklace**

Of twenty-nine cultured pearls, measuring from approximately 12.09 to 17.35 mm, joined by a pavé-set diamond clasp, mounted in 18K white gold, length 17 inches.

**Estimate** \$13,000-16,000

179



179

**A Diamond and Gold Brooch BOUCHERON**

Designed as a highly flexible graduated line of circular-cut diamond florets, extending circular-cut diamond leaves, mounted in 18K yellow gold, length 4 3/4 inches.

With maker's marks

**Estimate** \$18,000-22,000

180



180

**A Gold Box** CARTIER

Of rectangular form, designed as a textured woven-pattern box, mounted in 18K yellow and white gold, measures 2 3/4 x 3 3/8 x 5/8 inches.

Signed 'Cartier', no.12086

**Estimate** \$5,000-7,000

181



181

**A Rock Crystal, Yellow Sapphire and Diamond Suite** CARTIER

Comprising a pair of ear pendants, suspending a rock crystal set to the center with an oval-cut yellow sapphire, from a pavé-set diamond link, to a pear-shaped pavé-set diamond surmount; a similarly designed ring en suite, mounted in 18K yellow gold and platinum, ear pendants length 1 3/4 inches, ring size 7.

Signed 'Cartier Paris', no.225396, 226311, with French assay marks

**Estimate** \$28,000-32,000

182



182

**A South Sea Cultured Pearl and Diamond Suite**

Comprising a necklace, designed as two graduated strands of South Sea cultured pearls, measuring from approximately 14.98 to 12.13 mm, joined by a circular-cut diamond hook clasp; a pair of earclips en suite, mounted in 18K white gold, necklace length 17 inches to 19 inches, earclips length 1 inch.

**Estimate** \$25,000-30,000

183



184



185



183

**A Turquoise, Diamond and Gold Ring** BUCCELLATI

Of bombé design, centering upon an oval-shaped cabochon turquoise, within a textured gold and rose-cut diamond surround, mounted in 18K yellow gold, size 5 1/2.

Signed 'M. Buccellati'

**Estimate** \$5,000-7,000

184

**A Pair of Sapphire Cufflinks** BUCCELLATI

Each designed as a double-sided plaque, set with circular-cut sapphires, to the engraved border, mounted in silver-topped gold, length 1 inch.

Signed 'Buccellati'

**Estimate** \$2,600-3,500

185

**A Gold Thistle Brooch** BUCCELLATI

Designed as a spray of two thistles enhanced by textured sepals, stems, and extending three similarly textured leaves, mounted in 18K yellow gold, length 3 1/2 inches.

Signed 'M. Buccellati'

**Estimate** \$4,500-7,000



186



187



188



186

**An Important Ruby, Diamond and Gold Cuff Bracelet**

BUCCELLATI

Designed as a textured yellow gold hinged cuff, set with three oval-cut rubies, each within circular-cut diamond openwork surrounds, mounted in 18K yellow gold, diameter 2 1/8 inches.

Signed 'M.Buccellati', 'Italy'

**Estimate** \$35,000-40,000

188

**A Ruby and Diamond Ring** BUCCELLATI

The wide tapering band centering upon an oval-cut ruby, accented by pierced openwork circular-cut diamond detail, mounted in 18K yellow and white gold, size 5 3/4.

Signed 'M.Buccellati', 'Italy'

**Estimate** \$14,000-18,000

187

**A Pair of Ruby and Diamond Earclips** BUCCELLATI

Each designed as a pierced openwork foliate plaque, accented by circular-cut diamonds, centering upon an oval-cut ruby, with engraved gold borders and bezel, mounted in 18K white and yellow gold, length 1 inch.

Signed 'M.Buccellati', 'Italy'

**Estimate** \$14,000-18,000

189



190



189

**A Pair of Black Diamond and Colored Diamond Ear Pendants**  
JOOAL

Each designed as a bombé drop, accented by circular-cut black diamonds and colored diamonds, mounted in 18K rose gold, length 1 5/8 inches.

**Estimate** \$6,000-8,000

190

**A Enamel, Diamond and Gold Snake Bracelet**  
SEAMAN SCHEPPS 1960

Designed as a coiled snake, the polished gold spring band bracelet accented by black enamel scales, to the marquis-cut diamond eyes, mounted in 18K yellow gold, diameter 1 3/4 inches.  
Signed 'Seaman Schepps'

**Estimate** \$25,000-30,000

191



191

### A Pair of Colored Diamond Ear Pendants

Each suspending a vari-cut colored diamond plaque, within a pavé-set diamond surround and inner ring, from a pavé-set diamond circular link, to the vari-cut colored diamond cluster surmount, mounted in 18K blackened gold, length 2 1/4 inches.

**Estimate** \$15,000-18,000

PROPERTY OF A LADY

192

### An Onyx and Colored Diamond Ring

Designed as a row of three circular-cut colored diamonds, within an elongated oval onyx surround, to the circular-cut colored diamond shoulders, mounted in 18K yellow gold, size 4 1/4.

**Estimate** \$5,000-8,000

192



193

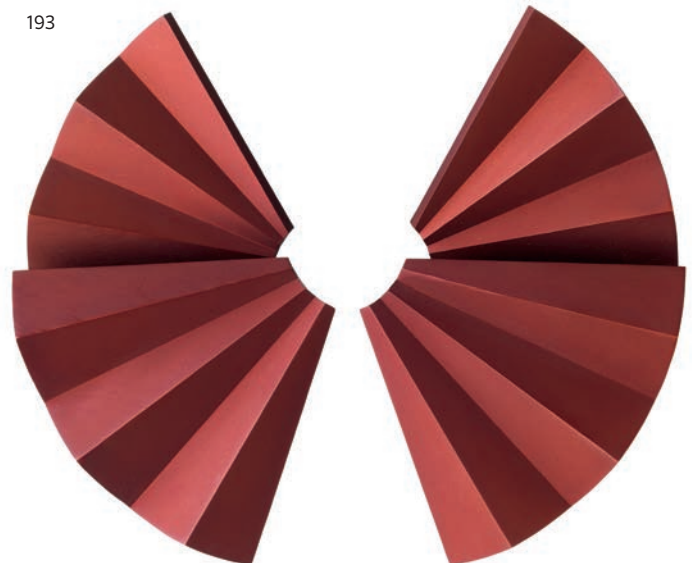
### A Pair of Titanium and Gold Earclips JAR

Each designed as an undulating deep red titanium fan, mounted in 18K yellow gold and titanium, length 3 inches.

Signed 'JAR Paris', with a suede original pouch

**Estimate** \$3,500-4,500

193



194



195



196



195

**An Impressive Art Deco Diamond Bracelet** CARTIER

Designed as a series of old-cut diamond geometric links, centering on collet-set old-cut diamonds, mounted in platinum, length 7 inches. Signed 'Cartier', no.936431

**Estimate** \$95,000-110,000

194

**An Important Pair of Diamond Ear Pendants**

Each suspending a pear-shaped diamond, weighing approximately 6.58 carats in total, from a circular-cut diamond surmount, mounted in 14K white gold, length 1 inch.

With report no.5151508303 dated 12 June 2013 from the Gemological Institute of America, stating that the diamond weighing 3.43 carats is G color, VS2 clarity

With report no.5151508272 dated 12 June 2013 from the Gemological Institute of America, stating that the diamond weighing 3.15 carats is F color, VS2 clarity

**Estimate** \$120,000-130,000

196

**A Coral, Diamond and Enamel 'Ladybug' Brooch** CARTIER

Designed as a ladybug, the coral wings decorated with collet-set diamonds, to the black enamel head, antennae and legs, mounted in platinum and 18K white gold, length 1 1/4 inches.

Signed 'Cartier Paris', with French assay marks

**Estimate** \$10,000-15,000





197



198



199



197

### An Impressive Diamond Ring CARTIER

Of bombé design, centering on an old-cut diamond, weighing approximately 5.02 carats, to the openwork gallery surround and old-cut diamond accents, mounted in 18K yellow gold, size 6 1/4.

Signed 'Monture Cartier'

With report no.17469728 dated 27 February 2012 from the Gemological Institute of America, stating that the diamond weighing 5.02 carats is D color, VS1 clarity

**Estimate** \$275,000-300,000

198

### A Peridot, Diamond and Gold Bracelet VAN CLEEF & ARPELS

Composed of a series of sculpted polished gold leaf panels, interspersed by marquise and square-cut peridots, accented by circular-cut diamonds, mounted in 18K yellow gold, length 7 3/4 inches.

Signed 'VCA', 'New York', no.30662

**Estimate** \$12,000-15,000

PROPERTY OF A LADY

199

### A Diamond and Gold Ring VAN CLEEF & ARPELS 1947

Of bombé design, centering on an old-cut diamond, weighing approximately 3.12 carats, to the polished gold surround with circular-cut diamond accents, mounted in 18K yellow gold, size 5 1/2.

Signed 'Van Cleef & Arpels', 'NY 12287'

**Estimate** \$50,000-70,000





200



201





202



203



200

#### **A South Sea Cultured Pearl Necklace**

Of sixty-one South Sea cultured pearls, measuring from approximately 16.78 to 12.88 mm, joined by a pavé-set diamond clasp, mounted in 18K white gold, length 37 inches.

**Estimate** \$22,000-24,000

202

#### **A Pair of Emerald and Diamond Ear Pendants**

Of chandelier design, each suspending a pear-shaped emerald drop, weighing approximately 26.88 carats in total, from an articulated bow and foliate motif plaque, entirely set with circular-cut and pear-shaped diamonds, mounted in 18K white gold, length 2 1/2 inches.

**Estimate** \$27,000-35,000

201

#### **A Pair of South Sea Cultured Pearl and Diamond Earclips**

Each designed as a South Sea cultured pearl drop, measuring approximately 15.47 mm, from a square and marquise-cut diamond cluster surmount, mounted in 18K white gold, length 7/8 inches.

**Estimate** \$3,000-5,000

203

#### **An Emerald and Diamond Ring**

Set to the center with a square-cut emerald, weighing approximately 7.56 carats, framed on either side by trapeze-cut diamond shoulders, mounted in 18K yellow gold and platinum, size 5.75.

With report no.5131194142 dated 23 March 2011 from the Gemological Institute of America, stating that the emerald has moderate clarity enhancement

**Estimate** \$45,000-55,000

204



204

**An Important Diamond and Yellow Diamond Necklace**

Designed as a pear-shaped, marquise and circular-cut diamond line, weighing approximately 44.55 carats in total, suspending a graduated series of pear-shaped fancy yellow diamonds, weighing approximately 18.43 carats in total, mounted in platinum, length 16 inches.

With twelve reports from the Gemological Institute of America stating that the diamonds are Fancy Intense Yellow, Internally Flawless to SI2 clarity

**Estimate** \$250,000-300,000



205



206



207



205

#### A Superb Pair of Emerald and Diamond Earclips

Each set with a cushion-shaped cabochon emerald, weighing approximately 23.70 and 23.17 carats, to the trapeze-cut diamond accent, mounted in platinum, length 3/4 inches.

With report no.11015180 dated 2 February 2011 from the Gubelin Gem Lab, stating that the emerald weighing 23.17 carats is of Colombian origin, with indications of minor clarity enhancement

With report no.11015181 dated 2 February 2011 from the Gubelin Gem Lab, stating that the emerald weighing 23.70 carats is of Colombian origin, with indications of minor clarity enhancement

**Estimate** \$260,000-300,000

206

#### A Diamond Bracelet

Designed as a highly flexible bracelet, set with five rows of circular-cut diamonds interspersed with baguette-cut diamonds, weighing approximately 44.37 carats in total, to the baguette-cut diamond clasp, mounted in 18K white gold, length 7 inches.

**Estimate** \$55,000-65,000

PROPERTY OF A GENTLEMAN

207

#### An Old-Cut Fancy Light Yellow Diamond

The old-cut fancy light yellow diamond, weighing approximately 16.08 carats (illustrated unmounted).

With report no.1152677467 dated 24 September 2013 from the Gemological Institute of America, stating that the diamond weighing 16.08 carats is Fancy Light Yellow color, VS1 clarity

**Estimate** \$70,000-90,000





208



PROPERTY OF A LADY

208

**A Rare Natural Fancy Colored Diamond Necklace**

The flexible collar designed as a graduating panel of vari-cut fancy colored diamonds, weighing approximately 117.42 carats in total, suspending a larger pear-shaped colored diamond, weighing approximately 8.50 carats, to the tapering back chain of similar design, mounted in 18K yellow gold, length 18 inches.

With four reports from the Gemological Institute of America stating the following:  
With report no.8638756 dated 1 August 1995 stating that the diamond weighing 2.81 carats is Fancy Deep Brownish Yellow  
With report no.8638757 dated 3 August 1995 stating that the diamond weighing 1.27 carats is Fancy Orangy Yellow  
With report no.8638758 dated 1 August 1995 stating that the diamond weighing 2.34 carats is Fancy Dark Brown-Greenish Yellow  
With report no.16307817 dated 24 September 2007 stating: A. The pear brilliant measuring approximately 18.37 x 11.12 x 6.75 mm is Very Light to Light Yellow B. The round brilliant measuring approximately 6.00 x 6.17 x 3.35 mm is Fancy to Fancy Deep Brownish Yellowish Orange C. The round brilliant measuring approximately 5.03 x 5.05 x 2.98 mm is Fancy to Fancy Deep Brownish Orange D. The round brilliant measuring approximately 5.80 x 5.84 x 3.75 mm is Fancy to Fancy Dark Yellowish Brown

**Estimate** \$450,000-500,000





209



209

**A Magnificent Fancy Pink Diamond**

Set with a pear-shaped natural fancy pink diamond, weighing approximately 9.01 carats, to the pavé-set diamond surround and gallery, mounted in 18K rose gold, size 8 (illustrated unmounted). With report no.1152263679 dated 8 August 2013 from the Gemological Institute of America, stating that the diamond weighing 9.01 carats is Fancy Pink color, VS1 clarity, this diamond has been determined by GIA to be a Type IIa diamond

**Estimate** \$2,900,000-4,000,000



(back detail of the present lot)





## GUIDE FOR PROSPECTIVE BUYERS

### BUYING AT AUCTION

The following pages are designed to offer you information on how to buy at auction at Phillips. Our staff will be happy to assist you.

### CONDITIONS OF SALE

The Conditions of Sale and Authorship Warranty which appear later in this catalogue govern the auction. Bidders are strongly encouraged to read them as they outline the legal relationship among Phillips, the seller and the buyer and describe the terms upon which property is bought at auction. Please be advised that Phillips generally acts as agent for the seller.

### BUYER'S PREMIUM

Phillips charges the successful bidder a commission, or buyer's premium, on the hammer price of each lot sold. The buyer's premium is payable by the buyer as part of the total purchase price at the following rates: 25% of the hammer price up to and including \$100,000, 20% of the portion of the hammer price above \$100,000 up to and including \$2,000,000 and 12% of the portion of the hammer price above \$2,000,000.

### 1 PRIOR TO AUCTION

#### Catalogue Subscriptions

If you would like to purchase a catalogue for this auction or any other Phillips sale, please contact us at +1 212 940 1240 or +44 20 7318 4010.

#### Pre-Sale Estimates

Pre-sale estimates are intended as a guide for prospective buyers. Any bid within the high and low estimate range should, in our opinion, offer a chance of success. However, many lots achieve prices below or above the pre-sale estimates. Where "Estimate on Request" appears, please contact the specialist department for further information. It is advisable to contact us closer to the time of the auction as estimates can be subject to revision. Pre-sale estimates do not include the buyer's premium or any applicable taxes.

#### Pre-Sale Estimates in Pounds Sterling and Euros

Although the sale is conducted in US dollars, the pre-sale estimates in the auction catalogues may also be printed in pounds sterling and/or euros. Since the exchange rate is that at the time of catalogue production and not at the date of auction, you should treat estimates in pounds sterling or euros as a guide only.

#### Catalogue Entries

Phillips may print in the catalogue entry the history of ownership of a work of art, as well as the exhibition history of the property and references to the work in art publications. While we are careful in the cataloguing process, provenance, exhibition and literature references may not be exhaustive and in some cases we may intentionally refrain from disclosing the identity of previous owners. Please note that all dimensions of the property set forth in the catalogue entry are approximate.

#### Condition of Lots

Our catalogues include references to condition only in the descriptions of multiple works (e.g., prints). Such references, though, do not amount to a full description of condition. The absence of reference to the condition of a lot in the catalogue entry does not imply that the lot is free from faults or imperfections. Solely as a convenience to clients, Phillips may provide condition reports. In preparing such reports, our specialists assess the condition in a manner appropriate to the estimated value of the property and the nature of the auction in which it is included. While condition reports are prepared honestly and carefully, our staff are not professional restorers or trained conservators. We therefore encourage all prospective buyers to inspect the property at the pre-sale exhibitions and recommend, particularly in the case of any lot of significant value, that you retain your own restorer or professional advisor to report to you on the property's condition prior to bidding. Any prospective buyer of photographs or prints should always request a condition report because all such property is sold unframed, unless otherwise indicated in the condition report. If a lot is sold framed, Phillips accepts no liability for the condition of the frame. If we sell any lot unframed, we will be pleased to refer the purchaser to a professional framer.

#### Pre-Auction Viewing

Pre-auction viewings are open to the public and free of charge. Our specialists are available to give advice and condition reports at viewings or by appointment.

#### Electrical and Mechanical Lots

All lots with electrical and/or mechanical features are sold on the basis of their decorative value only and should not be assumed to be operative. It is essential that, prior to any intended use, the electrical system is verified and approved by a qualified electrician.

### Symbol Key

The following key explains the symbols you may see inside this catalogue.

#### ○ Guaranteed Property

The seller of lots with this symbol has been guaranteed a minimum price. The guarantee may be provided by Phillips, by a third party or jointly by us and a third party. When a third party has financed all or part of our financial interest in a lot, it assumes all or part of the risk that the lot will not be sold and will be remunerated accordingly. The third party may bid on the guaranteed lot during the auction. If the third party is the successful bidder, the remuneration may be netted against the final purchase price. If the lot is not sold, the third party may incur a loss.

#### △ Property in Which Phillips Has an Ownership Interest

Lots with this symbol indicate that Phillips owns the lot in whole or in part or has an economic interest in the lot equivalent to an ownership interest.

#### ● No Reserve

Unless indicated by a \*, all lots in this catalogue are offered subject to a reserve. A reserve is the confidential value established between Phillips and the seller and below which a lot may not be sold. The reserve for each lot is generally set at a percentage of the low estimate and will not exceed the low pre-sale estimate.

#### Ω Endangered Species

Lots with this symbol have been identified at the time of cataloguing as containing endangered or other protected species of wildlife which may be subject to restrictions regarding export or import and which may require permits for export as well as import. Please refer to Paragraph 4 of the Guide for Prospective Buyers and Paragraph 11 of the Conditions of Sale.

## 2 BIDDING IN THE SALE

#### Bidding at Auction

Bids may be executed during the auction in person by paddle or by telephone or prior to the sale in writing by absentee bid. Proof of identity in the form of government issued identification will be required, as will an original signature. We may also require that you furnish us with a bank reference.

#### Bidding in Person

To bid in person, you will need to register for and collect a paddle before the auction begins. New clients are encouraged to register at least 48 hours in advance of a sale to allow sufficient time for us to process your information. All lots sold will be invoiced to the name and address to which the paddle has been registered and invoices cannot be transferred to other names and addresses. Please do not misplace your paddle. In the event you lose it, inform a Phillips staff member immediately. At the end of the auction, please return your paddle to the registration desk.

#### Bidding by Telephone

If you cannot attend the auction, you may bid live on the telephone with one of our multi-lingual staff members. This service must be arranged at least 24 hours in advance of the sale and is available for lots whose low pre-sale estimate is at least \$1,000. Telephone bids may be recorded. By bidding on the telephone, you consent to the recording of your conversation. We suggest that you leave a maximum bid, excluding the buyer's premium and any applicable taxes, which we can execute on your behalf in the event we are unable to reach you by telephone.

#### Absentee Bids

If you are unable to attend the auction and cannot participate by telephone, Phillips will be happy to execute written bids on your behalf. A bidding form can be found at the back of this catalogue. This service is free and confidential. Bids must be placed in the currency of the sale. Our staff will attempt to execute an absentee bid at the lowest possible price taking into account the reserve and other bidders. Always indicate a maximum bid, excluding the buyer's premium and any applicable taxes. Unlimited bids will not be accepted. Any absentee bid must be received at least 24 hours in advance of the sale. In the event of identical bids, the earliest bid received will take precedence.

#### Employee Bidding

Employees of Phillips and our affiliated companies, including the auctioneer, may bid at the auction by placing absentee bids so long as they do not know the reserve when submitting their absentee bids and otherwise comply with our employee bidding procedures.

# PHILLIPS



## DESIGN MASTERS

AUCTION 17 DECEMBER 2013 NEW YORK

VIEWING 11 - 16 DECEMBER

ENQUIRIES +1 212 940 1268

[designnewyork@phillips.com](mailto:designnewyork@phillips.com)

LUCIO FONTANA "Anti-Sofia" necklace, model no. 1.L.F., 1967

[PHILLIPS.COM](http://PHILLIPS.COM)

### Bidding Increments

Bidding generally opens below the low estimate and advances in increments of up to 10%, subject to the auctioneer's discretion. Absentee bids that do not conform to the increments set below may be lowered to the next bidding increment.

\$50 to \$1,000	by \$50s
\$1,000 to \$2,000	by \$100s
\$2,000 to \$3,000	by \$200s
\$3,000 to \$5,000	by \$200s, 500, 800 (i.e., \$4,200, 4,500, 4,800)
\$5,000 to \$10,000	by \$500s
\$10,000 to \$20,000	by \$1,000s
\$20,000 to \$30,000	by \$2,000s
\$30,000 to \$50,000	by \$2,000s, 5,000, 8,000
\$50,000 to \$100,000	by \$5,000s
\$100,000 to \$200,000	by \$10,000s
above \$200,000	auctioneer's discretion

The auctioneer may vary the increments during the course of the auction at his or her own discretion.

## 3 THE AUCTION

### Conditions of Sale

As noted above, the auction is governed by the Conditions of Sale and Authorship Warranty. All prospective bidders should read them carefully. They may be amended by saleroom addendum or auctioneer's announcement.

### Interested Parties Announcement

In situations where a person allowed to bid on a lot has a direct or indirect interest in such lot, such as the beneficiary or executor of an estate selling the lot, a joint owner of the lot or a party providing or participating in a guarantee on the lot, Phillips will make an announcement in the saleroom that interested parties may bid on the lot.

### Consecutive and Responsive Bidding; No Reserve Lots

The auctioneer may open the bidding on any lot by placing a bid on behalf of the seller. The auctioneer may further bid on behalf of the seller up to the amount of the reserve by placing consecutive bids or bids in response to other bidders. If a lot is offered without reserve, unless there are already competing absentee bids, the auctioneer will generally open the bidding at 50% of the lot's low pre-sale estimate. In the absence of a bid at that level, the auctioneer will proceed backwards at his or her discretion until a bid is recognized and will then advance the bidding from that amount. Absentee bids on no reserve lots will, in the absence of a higher bid, be executed at approximately 50% of the low pre-sale estimate or at the amount of the bid if it is less than 50% of the low pre-sale estimate. If there is no bid whatsoever on a no reserve lot, the auctioneer may deem such lot unsold.

## 4 AFTER THE AUCTION

### Payment

Buyers are required to pay for purchases immediately following the auction unless other arrangements are agreed with Phillips in writing in advance of the sale. Payment must be made in US dollars either by cash, check drawn on a US bank or wire transfer, as noted in Paragraph 6 of the Conditions of Sale. It is our corporate policy not to make or accept single or multiple payments in cash or cash equivalents in excess of US\$10,000.

### Credit Cards

As a courtesy to clients, Phillips will accept American Express, Visa and Mastercard to pay for invoices of \$100,000 or less. A processing fee will apply.

### Collection

It is our policy to request proof of identity on collection of a lot. A lot will be released to the buyer or the buyer's authorized representative when Phillips has received full and cleared payment and we are not owed any other amount by the buyer. Promptly after the auction, we will transfer all lots to our warehouse located at 29-09 37th Avenue in Long Island City, Queens, New York. All purchased lots should be collected at this location during our regular weekday business hours. As a courtesy to clients, we will upon request transfer purchased lots suitable for hand carry back to our premises at 450 Park Avenue, New York, New York for collection within 30 days following the date of the auction. We will levy removal, interest, storage and handling charges on uncollected lots.

### Loss or Damage

Buyers are reminded that Phillips accepts liability for loss or damage to lots for a maximum of seven days following the auction.

### Transport and Shipping

As a free service for buyers, Phillips will wrap purchased lots for hand carry only. We will, at the buyer's expense, either provide packing, handling and shipping services or coordinate with shipping agents instructed by the buyer in order to facilitate such services for property purchased at Phillips. Please refer to Paragraph 7 of the Conditions of Sale for more information.

### Export and Import Licenses

Before bidding for any property, prospective bidders are advised to make independent inquiries as to whether a license is required to export the property from the United States or to import it into another country. It is the buyer's sole responsibility to comply with all import and export laws and to obtain any necessary licenses or permits. The denial of any required license or permit or any delay in obtaining such documentation will not justify the cancellation of the sale or any delay in making full payment for the lot.

## IMPORTANT NOTICES FOR PROSPECTIVE BUYERS OF JEWELRY AND WATCHES

### Catalogue Entries

Phillips may print in the catalogue entry the history of ownership of a work included in the auction, as well as the exhibition history of the property and references to the work in art publications. While we are careful in the cataloguing process, provenance, exhibition and literature references may not be exhaustive and in some cases we may intentionally refrain from disclosing the identity of previous owners. Please note that all weights set forth in the catalogue entry are approximate, whether or not qualified by the terms "stated to be" or "approximately." Catalogue illustrations are rarely actual size and cannot be used as precise indications of size or weight.

### Colored Gemstones

Clients are advised that many colored gemstones are treated to enhance their properties. For example, heating is commonly used to improve the color or transparency of rubies and sapphires; oiling is commonly used to enhance the clarity of emeralds. Such enhancement procedures are widely accepted by the international jewelry profession. While heat enhancement of color is generally believed to be permanent, the process may impact the durability of the gemstone and special care of the stone may be required over time. Gemstones which have been oiled may need to be re-oiled after a period of years to retain their maximum clarity.

### Gemological Reports

As a matter of policy, Phillips will obtain gemological reports from officially recognized laboratories for certain gemstones offered for sale. A summary of these reports is included in the catalogue description for a lot, and a copy of the report is available upon request. Reports from American gemological laboratories used by Phillips will generally disclose heat enhancement or treatment of colored gemstones. European gemological laboratory reports will disclose heat enhancement only if specifically requested but will generally confirm when no heat enhancement or treatment has been made. Variations in approach and technology used by different gemological laboratories may result in a lack of consensus among reports as to whether any particular gemstone has been treated, the extent of treatment and whether treatment is permanent.

It is not feasible for Phillips to obtain such reports for all gemstones offered at auction. Prospective buyers should, therefore, bear in mind that colored gemstones offered for sale without a gemological report or a specific statement in the catalogue entry may have been treated to enhance color, transparency or clarity. Enhancement of colored gemstones may affect market value, and our pre-sale estimates reflect the assumption that any colored gemstone not described in the catalogue entry as natural may have been treated.



### **Country of Origin**

While Phillips attempts to obtain accurate information on the country of origin of gemstones, we do not guarantee the correctness of the catalogue or other descriptions of gemstones including country of origin.

### **Burmese Stones**

Clients are advised that rubies and jadeite originating in Burma (Myanmar) and articles of jewelry less than 100 years old which contain Burmese rubies or jadeite may not be imported into the United States or the European Union. Lots marked with ♦ contain rubies or jadeite of Burmese or unknown origin that may be subject to these restrictions.

Please note that items containing any other types of gemstones originating in Burma (e.g., sapphires) may be imported into the US or the EU provided that (a) the gemstones have been mounted or incorporated into jewelry outside of Burma and (b) the setting is not of a temporary nature. Loose gemstones of any type originating in Burma may not be imported into the US or the EU.

A purchaser's inability to import any such item into the US or the EU shall not constitute grounds for non-payment or cancellation of the sale.

### **Endangered Species**

Items made of or incorporating plant or animal material, such as coral, crocodile, ivory, whalebone, rhinoceros horn or tortoiseshell, irrespective of age, percentage or value, may require a license or certificate (e.g., a CITES permit) prior to exportation and additional licenses or certificates upon importation to any foreign country. Some countries prohibit altogether the importation of property containing such material. Lots marked with ♦ contain such material. Please note that the ability to obtain an export license or certificate does not ensure the ability to obtain an import license or certificate in another country, and vice versa.

We strongly suggest that prospective bidders check with their own government regarding wildlife and endangered species import requirements prior to placing a bid. It is the buyer's sole responsibility to obtain any necessary export or import licenses or certificates as well as any other required documentation. The denial of any required license or certificate or any delay in obtaining such documentation shall not constitute grounds for cancellation of the sale or any delay in making full payment for the lot. Please note that while we have, as a convenience to our clients, identified with ♦ lots containing potentially regulated plant or animal material, Phillips does not accept liability for errors or for failing to mark lots containing protected or regulated species.

### **Watches**

Phillips makes no representation or warranty that any watch is in working order, and no catalogue description of any lot should be construed as so stating. Prospective buyers are advised to have watches checked by a competent watchmaker before use. As a service to prospective buyers, we may provide a description of the condition of watches in the catalogue entry, including references to defects and repairs, and furnish a condition report, but such information is not necessarily complete and may not specify all mechanical replacements, restorations or defects. Please note that Phillips does not guarantee the authenticity of any individual component parts, such as wheels, hands, crowns, crystals, screws, bracelets and leather bands, since prior repairs and restoration work may have resulted in the replacement of original parts. Nor does Phillips warrant that watches in water-resistant cases are currently water-resistant. Prospective buyers should inspect all watches prior to the auction to evaluate the condition of property offered for sale.

### **Importation of Watches Into the United States**

Prospecting buyers should be aware that the importation of luxury watches such as Rolex into the United States is highly restricted. These watches (not limited to Rolex) may not be shipped into the US and may only be imported personally. US customs regulations generally limit the importation of luxury watches to one per buyer. Lots marked with ▼ are subject to these restrictions. A purchaser's inability to import a luxury watch into the United States or Phillips's failure to mark a lot with ▼ shall not constitute grounds for non-payment or cancellation of the sale.

### **Exportation of Watch Bands Incorporating Material from Endangered Species**

Some of the watches offered for sale in this catalogue may have bands made of endangered or protected animal materials such as alligator or crocodile and may not lawfully be exported from the auction site without a CITES export permit. As explained above, these lots are marked with ♦ in the catalogue. Accordingly, for purchased watches that are to be shipped out of the sale site for delivery, Phillips may need to remove and retain the band before shipping the watch and buckle.

## CONDITIONS OF SALE

The Conditions of Sale and Authorship Warranty set forth below govern the relationship between bidders and buyers, on the one hand, and Phillips and sellers, on the other hand. All prospective buyers should read these Conditions of Sale and Authorship Warranty carefully before bidding.

### 1 INTRODUCTION

Each lot in this catalogue is offered for sale and sold subject to: (a) the Conditions of Sale and Authorship Warranty; (b) additional notices and terms printed in other places in this catalogue, including the Guide for Prospective Buyers, and (c) supplements to this catalogue or other written material posted by Phillips in the saleroom, in each case as amended by any addendum or announcement by the auctioneer prior to the auction.

By bidding at the auction, whether in person, through an agent, by written bid, by telephone bid or other means, bidders and buyers agree to be bound by these Conditions of Sale, as so changed or supplemented, and Authorship Warranty.

These Conditions of Sale, as so changed or supplemented, and Authorship Warranty contain all the terms on which Phillips and the seller contract with the buyer.

### 2 PHILLIPS AS AGENT

Phillips acts as an agent for the seller, unless otherwise indicated in this catalogue or at the time of auction. On occasion, Phillips may own a lot directly, in which case we will act in a principal capacity as a consignor, or a company affiliated with Phillips may own a lot, in which case we will act as agent for that company, or Phillips or an affiliated company may have a legal, beneficial or financial interest in a lot as a secured creditor or otherwise.

### 3 CATALOGUE DESCRIPTIONS AND CONDITION OF PROPERTY

Lots are sold subject to the Authorship Warranty, as described in the catalogue (unless such description is changed or supplemented, as provided in Paragraph 1 above) and in the condition that they are in at the time of the sale on the following basis.

(a) The knowledge of Phillips in relation to each lot is partially dependent on information provided to us by the seller, and Phillips is not able to and does not carry out exhaustive due diligence on each lot. Prospective buyers acknowledge this fact and accept responsibility for carrying out inspections and investigations to satisfy themselves as to the lots in which they may be interested. Notwithstanding the foregoing, we shall exercise such reasonable care when making express statements in catalogue descriptions or condition reports as is consistent with our role as auctioneer of lots in this sale and in light of (i) the information provided to us by the seller, (ii) scholarship and technical knowledge and (iii) the generally accepted opinions of relevant experts, in each case at the time any such express statement is made.

(b) Each lot offered for sale at Phillips is available for inspection by prospective buyers prior to the auction. Phillips accepts bids on lots on the basis that bidders (and independent experts on their behalf, to the extent appropriate given the nature and value of the lot and the bidder's own expertise) have fully inspected the lot prior to bidding and have satisfied themselves as to both the condition of the lot and the accuracy of its description.

(c) Prospective buyers acknowledge that many lots are of an age and type which means that they are not in perfect condition. As a courtesy to clients, Phillips may prepare and provide condition reports to assist prospective buyers when they are inspecting lots. Catalogue descriptions and condition reports may make reference to particular imperfections of a lot, but bidders should note that lots may have other faults not expressly referred to in the catalogue or condition report. All dimensions are approximate. Illustrations are for identification purposes only and cannot be used as precise indications of size or to convey full information as to the actual condition of lots.

(d) Information provided to prospective buyers in respect of any lot, including any pre-sale estimate, whether written or oral, and information in any catalogue, condition or other report, commentary or valuation, is not a representation of fact but rather a statement of opinion held by Phillips. Any pre-sale estimate may not be relied on as a prediction of the selling price or value of the lot and may be revised from time to time by Phillips in our absolute discretion. Neither Phillips nor any of our affiliated companies shall be liable for any difference between the pre-sale estimates for any lot and the actual price achieved at auction or upon resale.

### 4 BIDDING AT AUCTION

(a) Phillips has absolute discretion to refuse admission to the auction or participation in the sale. All bidders must register for a paddle prior to bidding, supplying such information and references as required by Phillips.

(b) As a convenience to bidders who cannot attend the auction in person, Phillips may, if so instructed by the bidder, execute written absentee bids on a bidder's behalf. Absentee bidders are required to submit bids on the Absentee Bid Form, a copy of which is printed in this catalogue or otherwise available from Phillips. Bids must be placed in the currency of the sale. The bidder must clearly indicate the maximum amount he or she intends to

bid, excluding the buyer's premium and any applicable sales or use taxes. The auctioneer will not accept an instruction to execute an absentee bid which does not indicate such maximum bid. Our staff will attempt to execute an absentee bid at the lowest possible price taking into account the reserve and other bidders. Any absentee bid must be received at least 24 hours in advance of the sale. In the event of identical bids, the earliest bid received will take precedence.

(c) Telephone bidders are required to submit bids on the Telephone Bid Form, a copy of which is printed in this catalogue or otherwise available from Phillips. Telephone bidding is available for lots whose low pre-sale estimate is at least \$1,000. Phillips reserves the right to require written confirmation of a successful bid from a telephone bidder by fax or otherwise immediately after such bid is accepted by the auctioneer. Telephone bids may be recorded and, by bidding on the telephone, a bidder consents to the recording of the conversation.

(d) When making a bid, whether in person, by absentee bid or on the telephone, a bidder accepts personal liability to pay the purchase price, as described more fully in Paragraph 6 (a) below, plus all other applicable charges unless it has been explicitly agreed in writing with Phillips before the commencement of the auction that the bidder is acting as agent on behalf of an identified third party acceptable to Phillips and that we will only look to the principal for such payment.

(e) By participating in the auction, whether in person, by absentee bid or on the telephone, each prospective buyer represents and warrants that any bids placed by such person, or on such person's behalf, are not the product of any collusive or other anti-competitive agreement and are otherwise consistent with federal and state antitrust law.

(f) Arranging absentee and telephone bids is a free service provided by Phillips to prospective buyers. While we undertake to exercise reasonable care in undertaking such activity, we cannot accept liability for failure to execute such bids except where such failure is caused by our willful misconduct.

(g) Employees of Phillips and our affiliated companies, including the auctioneer, may bid at the auction by placing absentee bids so long as they do not know the reserve when submitting their absentee bids and otherwise comply with our employee bidding procedures.

### 5 CONDUCT OF THE AUCTION

(a) Unless otherwise indicated by the symbol •, each lot is offered subject to a reserve, which is the confidential minimum selling price agreed by Phillips with the seller. The reserve will not exceed the low pre-sale estimate at the time of the auction.

(b) The auctioneer has discretion at any time to refuse any bid, withdraw any lot, re-offer a lot for sale (including after the fall of the hammer) if he or she believes there may be error or dispute and take such other action as he or she deems reasonably appropriate. Phillips shall have no liability whatsoever for any such action taken by the auctioneer. If any dispute arises after the sale, our sale record is conclusive. The auctioneer may accept bids made by a company affiliated with Phillips provided that the bidder does not know the reserve placed on the lot.

(c) The auctioneer will commence and advance the bidding at levels and in increments he or she considers appropriate. In order to protect the reserve on any lot, the auctioneer may place one or more bids on behalf of the seller up to the reserve without indicating he or she is doing so, either by placing consecutive bids or bids in response to other bidders. If a lot is offered without reserve, unless there are already competing absentee bids, the auctioneer will generally open the bidding at 50% of the lot's low pre-sale estimate. In the absence of a bid at that level, the auctioneer will proceed backwards at his or her discretion until a bid is recognized and will then advance the bidding from that amount. Absentee bids on no reserve lots will, in the absence of a higher bid, be executed at approximately 50% of the low pre-sale estimate or at the amount of the bid if it is less than 50% of the low pre-sale estimate. If there is no bid whatsoever on a no reserve lot, the auctioneer may deem such lot unsold.

(d) The sale will be conducted in US dollars and payment is due in US dollars. For the benefit of international clients, pre-sale estimates in the auction catalogue may be shown in pounds sterling and/or euros and, if so, will reflect approximate exchange rates. Accordingly, estimates in pounds sterling or euros should be treated only as a guide.

(e) Subject to the auctioneer's reasonable discretion, the highest bidder accepted by the auctioneer will be the buyer and the striking of the hammer marks the acceptance of the highest bid and the conclusion of a contract for sale between the seller and the buyer. Risk and responsibility for the lot passes to the buyer as set forth in Paragraph 7 below.

(f) If a lot is not sold, the auctioneer will announce that it has been "passed," "withdrawn," "returned to owner" or "bought-in."

(g) Any post-auction sale of lots offered at auction shall incorporate these Conditions of Sale and Authorship Warranty as if sold in the auction.

## 6 PURCHASE PRICE AND PAYMENT

(a) The buyer agrees to pay us, in addition to the hammer price of the lot, the buyer's premium and any applicable sales tax (the "Purchase Price"). The buyer's premium is 25% of the hammer price up to and including \$100,000, 20% of the portion of the hammer price above \$100,000 up to and including \$2,000,000 and 12% of the portion of the hammer price above \$2,000,000. Phillips reserves the right to pay from our compensation an introductory commission to one or more third parties for assisting in the sale of property offered and sold at auction.

(b) Sales tax, use tax and excise and other taxes are payable in accordance with applicable law. All prices, fees, charges and expenses set out in these Conditions of Sale are quoted exclusive of applicable taxes. Phillips will only accept valid resale certificates from US dealers as proof of exemption from sales tax. All foreign buyers should contact the Client Accounting Department about tax matters.

(c) Unless otherwise agreed, a buyer is required to pay for a purchased lot immediately following the auction regardless of any intention to obtain an export or import license or other permit for such lot. Payments must be made by the invoiced party in US dollars either by cash, check drawn on a US bank or wire transfer, as follows:

(i) Phillips will accept payment in cash provided that the total amount paid in cash or cash equivalents does not exceed US\$10,000. Buyers paying in cash should do so in person at our Client Accounting Desk at 450 Park Avenue during regular weekday business hours.

(ii) Personal checks and banker's drafts are accepted if drawn on a US bank and the buyer provides to us acceptable government issued identification. Checks and banker's drafts should be made payable to "Phillips." If payment is sent by mail, please send the check or banker's draft to the attention of the Client Accounting Department at 450 Park Avenue, New York, NY 10022 and make sure that the sale and lot number is written on the check. Checks or banker's drafts drawn by third parties will not be accepted.

(iii) Payment by wire transfer may be sent directly to Phillips. Bank transfer details:

Citibank  
322 West 23rd Street, New York, NY 10011  
SWIFT Code: CITIUS33  
ABA Routing: 021 000 089  
For the account of Phillips  
Account no.: 58347736

Please reference the relevant sale and lot number.

(d) As a courtesy to clients, Phillips will accept American Express, Visa and Mastercard to pay for invoices of \$100,000 or less. A processing fee will apply.

(e) Title in a purchased lot will not pass until Phillips has received the Purchase Price for that lot in cleared funds. Phillips is not obliged to release a lot to the buyer until title in the lot has passed and appropriate identification has been provided, and any earlier release does not affect the passing of title or the buyer's unconditional obligation to pay the Purchase Price.

## 7 COLLECTION OF PROPERTY

(a) Phillips will not release a lot to the buyer until we have received payment of its Purchase Price in full in cleared funds, the buyer has paid all outstanding amounts due to Phillips or any of our affiliated companies, including any charges payable pursuant to Paragraph 8 (a) below, and the buyer has satisfied such other terms as we in our sole discretion shall require, including completing any anti-money laundering or anti-terrorism financing checks. As soon as a buyer has satisfied all of the foregoing conditions, he or she should contact our Shipping Department at +1 212 940 1372 or +1 212 940 1373 to arrange for collection of purchased property.

(b) The buyer must arrange for collection of a purchased lot within seven days of the date of the auction. Promptly after the auction, we will transfer all lots to our warehouse located at 29-09 37th Avenue in Long Island City, Queens, New York. All purchased lots should be collected at this location during our regular weekday business hours. As a courtesy to clients, Phillips will upon request transfer on a bi-weekly basis purchased lots suitable for hand-carry back to our premises at 450 Park Avenue, New York, New York for collection within 30 days following the date of the auction. Purchased lots are at the buyer's risk, including the responsibility for insurance, from the earlier to occur of (i) the date of collection or (ii) seven days after the auction. Until risk passes, Phillips will compensate the buyer for any loss or damage to a purchased lot up to a maximum of the Purchase Price paid, subject to our usual exclusions for loss or damage to property.

(c) As a courtesy to clients, Phillips will, without charge, wrap purchased lots for hand-carry only. We will, at the buyer's expense, either provide packing, handling, insurance and shipping services or coordinate with shipping agents instructed by the buyer in order to facilitate such services for property bought at Phillips. Any such instruction, whether or not made at our recommendation, is entirely at the buyer's risk and responsibility, and

we will not be liable for acts or omissions of third party packers or shippers. Third party shippers should contact us by telephone at +1 212 940 1376 or by fax at +1 212 924 6477 at least 24 hours in advance of collection in order to schedule pickup.

(d) Phillips will require presentation of government issued identification prior to release of a lot to the buyer or the buyer's authorized representative.

## 8 FAILURE TO COLLECT PURCHASES

(a) If the buyer pays the Purchase Price but fails to collect a purchased lot within 30 days of the auction, the buyer will incur a late collection fee of \$10 per day for each uncollected lot. Additional charges may apply to oversized lots. We will not release purchased lots to the buyer until all such charges have been paid in full.

(b) If a purchased lot is paid for but not collected within six months of the auction, the buyer authorizes Phillips, upon notice, to arrange a resale of the item by auction or private sale, with estimates and a reserve set at Phillips's reasonable discretion. The proceeds of such sale will be applied to pay for storage charges and any other outstanding costs and expenses owed by the buyer to Phillips or our affiliated companies and the remainder will be forfeited unless collected by the buyer within two years of the original auction.

## 9 REMEDIES FOR NON-PAYMENT

(a) Without prejudice to any rights the seller may have, if the buyer without prior agreement fails to make payment of the Purchase Price for a lot in cleared funds within seven days of the auction, Phillips may in our sole discretion exercise one or more of the following remedies: (i) store the lot at Phillips's premises or elsewhere at the buyer's sole risk and expense at the same rates as set forth in Paragraph 8 (a) above; (ii) cancel the sale of the lot, retaining any partial payment of the Purchase Price as liquidated damages; (iii) reject future bids from the buyer or render such bids subject to payment of a deposit; (iv) charge interest at 12% per annum from the date payment became due until the date the Purchase Price is received in cleared funds; (v) subject to notification of the buyer, exercise a lien over any of the buyer's property which is in the possession of Phillips and instruct our affiliated companies to exercise a lien over any of the buyer's property which is in their possession and, in each case, no earlier than 30 days from the date of such notice, arrange the sale of such property and apply the proceeds to the amount owed to Phillips or any of our affiliated companies after the deduction from sale proceeds of our standard vendor's commission and all sale-related expenses; (vi) resell the lot by auction or private sale, with estimates and a reserve set at Phillips reasonable discretion, it being understood that in the event such resale is for less than the original hammer price and buyer's premium for that lot, the buyer will remain liable for the shortfall together with all costs incurred in such resale; (vii) commence legal proceedings to recover the hammer price and buyer's premium for that lot, together with interest and the costs of such proceedings; (viii) set off the outstanding amount remaining unpaid by the buyer against any amounts which we or any of our affiliated companies may owe the buyer in any other transactions; (ix) release the name and address of the buyer to the seller to enable the seller to commence legal proceedings to recover the amounts due and legal costs or (x) take such other action as we deem necessary or appropriate.

(b) As security to us for full payment by the buyer of all outstanding amounts due to Phillips and our affiliated companies, Phillips retains, and the buyer grants to us, a security interest in each lot purchased at auction by the buyer and in any other property or money of the buyer in, or coming into, our possession or the possession of one of our affiliated companies. We may apply such money or deal with such property as the Uniform Commercial Code or other applicable law permits a secured creditor to do. In the event that we exercise a lien over property in our possession because the buyer is in default to one of our affiliated companies, we will so notify the buyer. Our security interest in any individual lot will terminate upon actual delivery of the lot to the buyer or the buyer's agent.

(c) In the event the buyer is in default of payment to any of our affiliated companies, the buyer also irrevocably authorizes Phillips to pledge the buyer's property in our possession by actual or constructive delivery to our affiliated company as security for the payment of any outstanding amount due. Phillips will notify the buyer if the buyer's property has been delivered to an affiliated company by way of pledge.

## 10 RESCISSION BY PHILLIPS

Phillips shall have the right, but not the obligation, to rescind a sale without notice to the buyer if we reasonably believe that there is a material breach of the seller's representations and warranties or the Authorship Warranty or an adverse claim is made by a third party. Upon notice of Phillips's election to rescind the sale, the buyer will promptly return the lot to Phillips, and we will then refund the Purchase Price paid to us. As described more fully in Paragraph 13 below, the refund shall constitute the sole remedy and recourse of the buyer against Phillips and the seller with respect to such rescinded sale.

## 11 EXPORT, IMPORT AND ENDANGERED SPECIES LICENSES AND PERMITS

Before bidding for any property, prospective buyers are advised to make their own inquiries as to whether a license is required to export a lot from the United States or to import it into another country. Prospective buyers are advised that some countries

prohibit the import of property made of or incorporating plant or animal material, such as coral, crocodile, ivory, whalebone, rhinoceros horn or tortoiseshell, irrespective of age, percentage or value. Accordingly, prior to bidding, prospective buyers considering export of purchased lots should familiarize themselves with relevant export and import regulations of the countries concerned. It is solely the buyer's responsibility to comply with these laws and to obtain any necessary export, import and endangered species licenses or permits. Failure to obtain a license or permit or delay in so doing will not justify the cancellation of the sale or any delay in making full payment for the lot. As a courtesy to clients, Phillips has marked in the catalogue lots containing potentially regulated plant or animal material, but we do not accept liability for errors or for failing to mark lots containing protected or regulated species.

## **12 CLIENT INFORMATION**

In connection with the supply of auction related services and other products and services, or as required by law, Phillips may ask clients to provide personal information about themselves or in certain cases (such as to conduct credit checks, verify identity or prevent fraud) obtain information about clients from third parties. Phillips may also occasionally use personal details provided by clients to send them marketing communications about our products, services or events. By agreeing to these Conditions of Sale and providing Phillips with personal details, clients agree that Phillips and our affiliated companies may use those details for the above purposes. If clients would like further information about our privacy policy or how to correct their data or opt-out from receiving further marketing communications, please contact us at +1 212 940 1228.

## **13 LIMITATION OF LIABILITY**

(a) Subject to subparagraph (e) below, the total liability of Phillips, our affiliated companies and the seller to the buyer in connection with the sale of a lot shall be limited to the Purchase Price actually paid by the buyer for the lot.

(b) Except as otherwise provided in this Paragraph 13, none of Phillips, any of our affiliated companies or the seller (i) is liable for any errors or omissions, whether orally or in writing, in information provided to prospective buyers by Phillips or any of our affiliated companies or (ii) accepts responsibility to any bidder in respect of acts or omissions, whether negligent or otherwise, by Phillips or any of our affiliated companies in connection with the conduct of the auction or for any other matter relating to the sale of any lot.

(c) All warranties other than the Authorship Warranty, express or implied, including any warranty of satisfactory quality and fitness for purpose, are specifically excluded by Phillips, our affiliated companies and the seller to the fullest extent permitted by law.

(d) Subject to subparagraph (e) below, none of Phillips, any of our affiliated companies or the seller shall be liable to the buyer for any loss or damage beyond the refund of the Purchase Price referred to in subparagraph (a) above, whether such loss or damage is characterized as direct, indirect, special, incidental or consequential, or for the payment of interest on the Purchase Price to the fullest extent permitted by law.

(e) No provision in these Conditions of Sale shall be deemed to exclude or limit the liability of Phillips or any of our affiliated companies to the buyer in respect of any fraud or fraudulent misrepresentation made by any of us or in respect of death or personal injury caused by our negligent acts or omissions.

## **14 COPYRIGHT**

The copyright in all images, illustrations and written materials produced by or for Phillips relating to a lot, including the contents of this catalogue, is and shall remain at all times the property of Phillips and such images and materials may not be used by the buyer or any other party without our prior written consent. Phillips and the seller make no representations or warranties that the buyer of a lot will acquire any copyright or other reproduction rights in it.

## **15 GENERAL**

(a) These Conditions of Sale, as changed or supplemented as provided in Paragraph 1 above, and Authorship Warranty set out the entire agreement between the parties with respect to the transactions contemplated herein and supersede all prior and contemporaneous written, oral or implied understandings, representations and agreements.

(b) Notices to Phillips shall be in writing and addressed to the department in charge of the sale, quoting the reference number specified at the beginning of the sale catalogue. Notices to clients shall be addressed to the last address notified by them in writing to Phillips.

(c) These Conditions of Sale are not assignable by any buyer without our prior written consent but are binding on the buyer's successors, assigns and representatives.

(d) Should any provision of these Conditions of Sale be held void, invalid or unenforceable for any reason, the remaining provisions shall remain in full force and effect. No failure by any party to exercise, nor any delay in exercising, any right or remedy under these Conditions of Sale shall act as a waiver or release thereof in whole or in part.

## **16 LAW AND JURISDICTION**

(a) The rights and obligations of the parties with respect to these Conditions of Sale and Authorship Warranty, the conduct of the auction and any matters related to any of the foregoing shall be governed by and interpreted in accordance with laws of the State of New York, excluding its conflicts of law rules.

(b) Phillips, all bidders and all sellers agree to the exclusive jurisdiction of the (i) state courts of the State of New York located in New York City and (ii) the federal courts for the Southern and Eastern Districts of New York to settle all disputes arising in connection with all aspects of all matters or transactions to which these Conditions of Sale and Authorship Warranty relate or apply.

(c) All bidders and sellers irrevocably consent to service of process or any other documents in connection with proceedings in any court by facsimile transmission, personal service, delivery by mail or in any other manner permitted by New York law or the law of the place of service, at the last address of the bidder or seller known to Phillips.



## AUTHORSHIP WARRANTY

Phillips warrants the authorship of property in this auction catalogue described in headings in **BOLD** or **CAPITALIZED** type for a period of five years from date of sale by Phillips, subject to the exclusions and limitations set forth below.

(a) Phillips gives this Authorship Warranty only to the original buyer of record (i.e., the registered successful bidder) of any lot. This Authorship Warranty does not extend to (i) subsequent owners of the property, including purchasers or recipients by way of gift from the original buyer, heirs, successors, beneficiaries and assigns; (ii) property where the description in the catalogue states that there is a conflict of opinion on the authorship of the property; (iii) property where our attribution of authorship was on the date of sale consistent with the generally accepted opinions of specialists, scholars or other experts; (iv) property whose description or dating is proved inaccurate by means of scientific methods or tests not generally accepted for use at the time of the publication of the catalogue or which were at such time deemed unreasonably expensive or impractical to use or likely in our reasonable opinion to have caused damage or loss in value to the lot or (v) there has been no material loss in value of the lot from its value had it been as described in the heading of the catalogue entry.

(b) In any claim for breach of the Authorship Warranty, Phillips reserves the right, as a condition to rescinding any sale under this warranty, to require the buyer to provide to us at the buyer's expense the written opinions of two recognized experts approved in advance by Phillips. We shall not be bound by any expert report produced by the buyer and reserve the right to consult our own experts at our expense. If Phillips agrees to rescind a sale under the Authorship Warranty, we shall refund to the buyer the reasonable costs charged by the experts commissioned by the buyer and approved in advance by us.

(c) Subject to the exclusions set forth in subparagraph (a) above, the buyer may bring a claim for breach of the Authorship Warranty provided that (i) he or she has notified Phillips in writing within three months of receiving any information which causes the buyer to question the authorship of the lot, specifying the auction in which the property was included, the lot number in the auction catalogue and the reasons why the authorship of the lot is being questioned and (ii) the buyer returns the lot to Phillips in the same condition as at the time of its auction and is able to transfer good and marketable title in the lot free from any third party claim arising after the date of the auction. Phillips has discretion to waive any of the foregoing requirements.

(d) The buyer understands and agrees that the exclusive remedy for any breach of the Authorship Warranty shall be rescission of the sale and refund of the original Purchase Price paid. This remedy shall constitute the sole remedy and recourse of the buyer against Phillips, any of our affiliated companies and the seller and is in lieu of any other remedy available as a matter of law or equity. This means that none of Phillips, any of our affiliated companies or the seller shall be liable for loss or damage beyond the remedy expressly provided in this Authorship Warranty, whether such loss or damage is characterized as direct, indirect, special, incidental or consequential, or for the payment of interest on the original Purchase Price.

# PHILLIPS

## CHIEF EXECUTIVE OFFICER

Michael McGinnis

## CHIEF OPERATING OFFICER

Sean Cleary

## CHIEF BUSINESS DEVELOPMENT OFFICER

Patricia G. Hambrecht

## CHIEF FINANCIAL OFFICER

Annette Schwaer

## CHIEF INFORMATION OFFICER

Ben Carey

## SENIOR DIRECTORS

Olivier Vrankenne  
Finn Schouenborg Dombernowsky  
Vanessa Kramer Hallett  
Alexander Payne  
Rodman Primack

Henry Allsopp  
Joseph D. Carlucci  
Alex Heminway  
Nazgol Jahan

## DIRECTORS

Martin Klosterfelde  
Cary Leibowitz  
Svetlana Marich  
Jean-Michel Placent

Peter Sumner  
Kelly Troester  
Ben Williams

## INTERNATIONAL SPECIALISTS

**Berlin** Martin Klosterfelde, Director and International Specialist, Contemporary Art +49 177 628 4110  
**Brussels** Olivier Vrankenne, Head of Contemporary Art, Europe +32 486 43 43 44  
Bérénice Chef, Specialist, Contemporary Art +32 473 12 27 06  
**Geneva** Oksana Katchaluba, Specialist, Contemporary Art +41 22 906 80 00  
**Istanbul** Deniz Atac, Consultant +90 533 374 1198  
**Los Angeles** Maya McLaughlin, Specialist, Contemporary Art +1 323 791 1771  
**Milan** Laura Garbarino, Senior International Specialist, Contemporary Art +39 339 478 9671  
**Moscow** Svetlana Marich, Director and Senior International Specialist, Contemporary Art +7 495 225 88 22  
**New York** Rodman Primack, Senior Director and International Specialist, Contemporary Art +1 212 940 1260  
**Paris** Edouard de Moussac, Specialist, Contemporary Art +33 1 42 78 67 77  
**Portugal** Maura Marvão, Consultant, Contemporary Art +351 917 564 427  
**Zurich** Niklaus Kuenzler, Specialist, Contemporary Art +41 79 533 90 00

## WORLDWIDE OFFICES

### NEW YORK

450 Park Avenue, New York, NY 10022, USA  
tel +1 212 940 1200 fax +1 212 940 1378

### BRUSSELS

rue Jean Baptiste Colyns 72, 1050 Brussels, Belgium  
tel +32 486 43 43 44

### GENEVA

23 quai des Bergues, 1201 Geneva, Switzerland  
tel +41 22 906 80 00 fax +41 22 906 80 01

### ISTANBUL

Meclisi Mebusan Caddesi, Deniz Apartmani No. 79/8  
Beyoglu 34427, Istanbul, Turkey  
tel +90 533 374 1198

### LOS ANGELES

7285 Woodrow Wilson, Los Angeles, CA 90068, USA  
tel +1 323 791 1771

### LONDON

Howick Place, London SW1P 1BB, United Kingdom  
tel +44 20 7318 4010 fax +44 20 7318 4011

### MILAN

via Vincenzo Monti 26, 20123 Milan, Italy  
tel +39 339 478 9671

### MOSCOW

Nikolskaya Str 19-21, 5th floor, 109012 Moscow, Russia  
tel +7 495 225 88 22 fax +7 495 225 88 87

### PARIS

46 rue du Bac, 75007 Paris, France  
tel +33 1 42 78 67 77 fax +33 1 42 78 23 07

### ZURICH

Restelbergstrasse 89, 8044 Zurich, Switzerland  
tel +41 79 533 90 00

## SPECIALISTS AND DEPARTMENTS

### CONTEMPORARY ART

Michael McGinnis, Chief Executive Officer +1 212 940 1254  
Joseph D. Carlucci, International Business Director +1 212 940 1366

#### NEW YORK

Zach Miner, Head of Evening Sale +1 212 940 1256  
Amanda Stoffel, Head of Day Sale +1 212 940 1261  
Benjamin Godsill, Head of Under the Influence Sale +1 212 940 1333  
Laura González, Head of Latin America Sale +1 212 940 1216

Jean-Michel Placent +1 212 940 1263  
Sarah Mudge Sapirstein +1 212 940 1259

Katherine Lukacher +1 212 940 1215  
Samuel Mansour +1 212 940 1219  
Chloë Waddington +1 212 940 1288  
Joshua Friedman +1 212 940 1392  
Jed Moch +1 212 940 1301

#### LONDON

Peter Sumner, Head of Contemporary Art, London +44 20 7318 4063  
Henry Highley, Head of Day Sale +44 20 7318 4061  
Tamila Kerimova, Head of Under the Influence Sale +44 20 7318 4065

Henry Allsopp +44 20 7318 4060  
Matt Langton +44 20 7318 4074  
Daniela Sánchez +44 20 7318 4090

Charlotte Salisbury +44 20 7318 4058  
Simon Tovey +44 20 7318 4084  
Hannah Tjaden +44 20 7318 4093  
Marta De Roia +44 20 7318 4096

### MODERN AND CONTEMPORARY EDITIONS

Cary Leibowitz, Worldwide Co-Director +1 212 940 1222  
Kelly Troester, Worldwide Co-Director +1 212 940 1221

#### NEW YORK

Jannah Greenblatt +1 212 940 1332  
Mark Ferkul +1 212 940 1238

#### LONDON

Robert Kennan, Head of Sale +44 20 7318 4010  
Rebecca Tooby-Desmond +44 20 7318 4079

### EXHIBITIONS

Arianna Jacobs +44 20 7318 4054

### PRIVATE SALES

Susanna Brockman +44 20 7318 4041

### DESIGN

Alexander Payne, Senior Director +44 20 7318 4052  
and Worldwide Head, Design

#### NEW YORK

Alex Heminway, New York Director +1 212 940 1268  
Meaghan Roddy, Head of Sale +1 212 940 1266

Marcus Tremonto +1 212 940 1268  
Cordelia Lembo +1 212 940 1265

Lauren Sohn +1 212 940 1268

#### LONDON

Ben Williams, Head of Sale +44 20 7318 4027

Domenico Raimondo +44 20 7318 4016  
Marine Hartogs +44 20 7318 4021  
Marcus McDonald +44 20 7318 4095

Annabelle Wills +44 20 7318 4019  
Sofia Sayn-Wittgenstein +44 20 7318 4023

### PHOTOGRAPHS

Vanessa Kramer Hallett, Senior Director +1 212 940 1243  
and Worldwide Head, Photographs

#### NEW YORK

Shlomi Rabi +1 212 940 1246  
Caroline Deck +1 212 940 1247  
Sarah Krueger +1 212 940 1225  
Kelly Van Ingen +1 212 940 1245

#### LONDON

Lou Proud, Head of Photographs, London +44 20 7318 4018  
Alexandra Bibby +44 20 7318 4087  
Laetitia Morenz +44 20 7318 4092

#### PARIS

Jonas Tebib +33 1 42 78 67 77

#### CHICAGO

Carol Ehlers +1 212 940 1245

### JEWELS

Nazgol Jahan, Worldwide Director +1 212 940 1283

#### NEW YORK

Joanna Bengoa +1 212 940 1302  
Christina Alford +1 212 940 1365

### PRIVATE CLIENT SERVICES

Finn Schouenborg Dombernowsky, +44 20 7318 4010  
International Head, Private Clients

#### LONDON

Brooke Metcalfe +44 20 7318 2929  
Anna Skigin +44 20 7318 4042  
Dawn Zhu +44 20 7318 4017  
Adam Clay +44 20 7318 4048  
Lily Atherton Hanbury +44 20 7318 4040

#### NEW YORK

Philae Knight +1 212 940 1313  
Caroline Conegliano +1 212 940 1297  
Anna Lin Poulson +1 212 940 1361  
Sara Tayeb-Khalifa +1 212 940 1383

### CLIENT DEVELOPMENT

#### LONDON

Isadora Tharin  
Linda Pyke

#### NEW YORK

Carolyn Bachman  
Amy Sheldon

### BUSINESS DIRECTOR EUROPE

#### LONDON

Paul de Bono +44 20 7318 4070

### PROPOSALS

Amy Davis, New York +1 212 940 1271

### MUSEUM SERVICES DEPARTMENT

#### NEW YORK

Lauren Shadford +1 212 940 1257  
Cecilia Wolfson +1 212 940 1258

### OFFICE OF THE CHIEF EXECUTIVE OFFICER

#### NEW YORK

Elizabeth Anne Wallace +1 212 940 1303

#### LONDON

Fiona McGovern +44 20 7318 4099

### ART AND PRODUCTION

Andrea Koronkiewicz, Director of Creative Services  
Orlann Capazorio, Director of Production  
Fernando Dias de Souza, Graphic Designer  
Jen Cogan, Graphic Designer  
Jeff Velazquez, Production Artist

### COMMUNICATIONS AND MARKETING

#### NEW YORK

Trish Walsh, Marketing Manager  
Tiana Webb-Evans, Director of Communications

#### LONDON

Alex Godwin-Brown,  
Head of Press and Events, Europe

# SALE INFORMATION

## **AUCTION & VIEWING LOCATION**

450 Park Avenue New York 10022

## **AUCTION**

9 December 2013, 3pm

## **VIEWING**

2-9 December

Monday – Saturday 10am – 6pm

Sunday 12pm – 6pm

## **SALE DESIGNATION**

In sending in written bids or making enquiries  
please refer to this sale as NY060213 or Jewels.

## **WORLDWIDE DIRECTOR**

Nazgol Jahan +1 212 940 1283

## **JEWELS**

Joanna Bengoa +1 212 940 1302

Christina Alford +1 212 940 1365

Lane McLean +44 20 7318 4032

## **PHOTOGRAPHY**

Antfarm Photography

## **AUCTIONEERS**

Alexander Gilkes 1308958

Sarah Mudge Sapirstein 1301805

Sarah Krueger 1460468

Marissa Piedra 1460469

## **CATALOGUES**

Emma Miller +1 212 940 1240

catalogues@phillips.com

\$35/€25/£22 at the gallery

## **ABSENTEE AND TELEPHONE BIDS**

Main +1 212 940 1228 fax +1 212 924 1749

bidsnewyork@phillips.com

Marissa Piedra, Auction Manager +1 212 940 1304

## **CLIENT ACCOUNTING**

Sylvia Leitao +1 212 940 1231

### **Buyer Accounts**

Joseph Blanks +1 212 940 1371

### **Seller Accounts**

Teren Scudder +1 212 940 1232

## **CLIENT SERVICES**

450 Park Avenue +1 212 940 1200

## **SHIPPING**

Steve Orridge +1 212 940 1370

Shannon Barnes +1 212 940 1373



## TELEPHONE AND ABSENTEE BID FORM

PLEASE RETURN THIS FORM BY FAX TO +1 212 924 1749 OR EMAIL IT TO BIDSNEWYORK@PHILLIPS.COM AT LEAST 24 HOURS BEFORE THE SALE. PLEASE READ CAREFULLY THE INFORMATION IN THE RIGHT COLUMN AND NOTE THAT IT IS IMPORTANT THAT YOU INDICATE WHETHER YOU ARE APPLYING AS AN INDIVIDUAL OR ON BEHALF OF A COMPANY.

Please select the type of bid you wish to make with this form (please select one):

- ☐ **ABSENTEE BID FORM**  
☐ **TELEPHONE BID FORM**

Please indicate in what capacity you will be bidding (please select one):

- ☐ **AS A PRIVATE INDIVIDUAL**  
☐ **ON BEHALF OF A COMPANY**

Sale Title		Sale Number	Sale Date
Title	First Name	Surname	
Company (if applicable)		Account Number	
Address			
City		State/Country	
Zip Code			
Phone		Mobile	
Email		Fax	
Phone (for Phone Bidding only)			

Lot Number In Consecutive Order	Brief Description	US \$ Limit* Absentee Bids Only

\* Excluding Buyer's Premium and sales or use taxes

## FINANCIAL INFORMATION

For your bid to be accepted, we require the following information for our reference only. Please note that you may be contacted to provide a bank reference:

Credit Card Type	Expiration Date
Credit Card Number	
For anyone wishing to bid on lots with a low pre-sale estimate above \$10,000, please provide the following information (for reference only)	
Bank Name	Contact
Telephone / Fax	Account Number

Please note that you may be contacted to provide additional bank references.

I hereby authorize the above references to release information to PHILLIPS. Please bid on my behalf up to the limits shown for the indicated lots without legal obligations to PHILLIPS, its staff or agents; and subject to the Conditions of Sale and Authorship Warranty printed in the catalogue, additional notices or terms printed in the catalogue and supplements to the catalogue posted in the salesroom, and in accordance with the above statements and conditions.

Signature	Date
-----------	------

☐ I ACCEPT THE CONDITIONS OF SALE OF PHILLIPS AS STATED IN OUR CATALOGUES AND ON OUR WEBSITE.

- **PRIVATE PURCHASES:** Proof of identity in the form of government-issued identification will be required.
- **COMPANY PURCHASES:** If you are buying under a business entity we require a copy of government-issued identification (such as a resale certificate, corporate bank information or the certificate of incorporation) to verify the status of the company.
- **CONDITIONS OF SALE** All bids are placed and executed, and all lots are sold and purchased, subject to the Conditions of Sale printed in the catalogue. Please read them carefully before placing a bid. Your attention is drawn to Paragraph 4 of the Conditions of Sale.
- If you cannot attend the sale, we can execute bids confidentially on your behalf.
- Phillips charges the successful bidder a commission, or buyer's premium, on the hammer price of each lot sold. The buyer's premium is payable by the buyer as part of the total purchase price at the following rates: 25% of the hammer price up to and including \$100,000, 20% of the portion of the hammer price above \$100,000 up to and including \$2,000,000 and 12% of the portion of the hammer price above \$2,000,000 on each lot sold.
- "Buy" or unlimited bids will not be accepted. Alternative bids can be placed by using the word "OR" between lot numbers.
- For absentee bids, indicate your maximum limit for each lot, excluding the buyer's premium and any applicable sales or use tax. Your bid will be executed at the lowest price taking into account the reserve and other bidders. On no reserve lots, in the absence of other bids, your bid will be executed at approximately 50% of the low pre-sale estimate or at the amount specified, if less than 50% of the low estimate.
- Your bid must be submitted in the currency of the sale and will be rounded down to the nearest amount consistent with the auctioneer's bidding increments.
- If we receive identical bids, the first bid received will take precedence.
- Arranging absentee and telephone bids is a free service provided by us to prospective buyers. While we will exercise reasonable care in undertaking such activity, we cannot accept liability for errors relating to execution of your bids except in cases of willful misconduct. Agreement to bid by telephone must be confirmed by you promptly in writing or by fax. Telephone bid lines may be recorded.
- Please submit your bids to the Bid Department by fax at +1 212 924 1749 or scan and email to bidsnewyork@phillips.com at least 24 hours before the sale. You will receive confirmation by email within one business day. To reach the Bid Department by phone please call +1 212 940 1228.
- Absent prior payment arrangements, please provide a bank reference. Payment can be made by cash (up to \$10,000), credit card (up to \$100,000), money order, wire transfer, bank check or personal check with identification. Please note that credit cards are subject to a surcharge.
- Lots cannot be collected until payment has cleared and all charges have been paid.
- By signing this Bid Form, you consent to our use of your personal data, including sensitive personal data, in accordance with Phillips's Privacy Policy published on our website at www.phillips.com or available on request by emailing dataprotection@phillips.com. We may send you materials about us and our services or other information which we think you may find interesting. If you would prefer not to receive such information, please email us at dataprotection@phillips.com.
- Phillips's premises may be subject to video surveillance and recording. Telephone calls (e.g., telephone bidding) may also be recorded. We may process that information in accordance with our Privacy Policy.

# PHILLIPS

450 Park Avenue New York 10022  
PHILLIPS.COM +1 212 940 1200  
bidsnewyork@phillips.com

## IN-PERSON REGISTRATION FORM

TO BID IN PERSON PLEASE SUBMIT THIS FORM BY EMAIL TO BIDSNEWYORK@PHILLIPS.COM  
OR FAX AT +1 212 924 1749 FOR PRE-REGISTRATION OR BRING IT TO THE AUCTION FOR  
REGISTRATION AT 450 PARK AVENUE, NEW YORK, NY 10022

Please indicate in what capacity you will be bidding (please select one):

- ☐ **AS A PRIVATE INDIVIDUAL**  
☐ **ON BEHALF OF A COMPANY**

Sale Title	Number	Date
Title First Name	Surname	
Company (if applicable)	Account Number	
Address		
City	State/Country	
Post Code		
Phone	Mobile	
Email	Fax	

### FINANCIAL INFORMATION

For your bid to be accepted, we require the following information for our reference only.  
Please note that you may be contacted to provide a bank reference:

Credit Card Type	Expiration Date
Credit Card Number	

For anyone wishing to bid on lots with a low pre-sale estimate above \$10,000, please provide the following information (for reference only)

Bank Name	Contact
Telephone / Fax	Account Number

Please note that you may be contacted to provide additional bank references.

I hereby authorize the above references to release information to PHILLIPS. I agree that all bids and purchases are subject to the Conditions of Sale and Authorship Warranty printed in the catalogue, additional notices or terms printed in the catalogue and supplements to the catalogue posted in the salesroom, and in accordance with the above statements and conditions. I assume all responsibility for payment for the goods purchased under the assigned paddle. If I am acting as an agent, I agree to be personally responsible for all purchases made on behalf of my client(s), unless other arrangements are confirmed in writing prior to each auction.

Signature \_\_\_\_\_ Date \_\_\_\_\_

☐ **I ACCEPT THE CONDITIONS OF SALE OF PHILLIPS AS STATED IN OUR CATALOGUES AND ON OUR WEBSITE.**

Paddle Number

- **PRIVATE PURCHASES:** Proof of identity in the form of government-issued identification will be required.
- **COMPANY PURCHASES:** If you are buying under a business entity we require a copy of government-issued identification (such as a resale certificate, corporate bank information or the certificate of incorporation) to verify the status of the company.
- **CONDITIONS OF SALE** All bids are placed and executed, and all lots are sold and purchased, subject to the Conditions of Sale printed in the catalogue. Please read them carefully before placing a bid. Your attention is drawn to Paragraph 4 of the Conditions of Sale.
- Phillips charges the successful bidder a commission, or buyer's premium, on the hammer price of each lot sold. The buyer's premium is payable by the buyer as part of the total purchase price at the following rates: 25% of the hammer price up to and including \$100,000, 20% of the portion of the hammer price above \$100,000 up to and including \$2,000,000 and 12% of the portion of the hammer price above \$2,000,000 on each lot sold.
- Absent prior payment arrangements, please provide a bank reference. Payment can be made by cash (up to \$10,000), credit card (up to \$100,000), money order, wire transfer, bank check or personal check with identification. Please note that credit cards are subject to a surcharge.
- Lots cannot be collected until payment has cleared and all charges have been paid.
- By signing this Bid Form, you consent to our use of your personal data, including sensitive personal data, in accordance with Phillips's Privacy Policy published on our website at [www.phillips.com](http://www.phillips.com) or available on request by emailing [dataprotection@phillips.com](mailto:dataprotection@phillips.com). We may send you materials about us and our services or other information which we think you may find interesting. If you would prefer not to receive such information, please email us at [dataprotection@phillips.com](mailto:dataprotection@phillips.com).
- Phillips's premises may be subject to video surveillance and recording. Telephone calls (e.g., telephone bidding) may also be recorded. We may process that information in accordance with our Privacy Policy.

**Opposite** An Amethyst and Diamond Bracelet, A Pair of Diamond and Titanium Hoop Earrings, Lot 87, 124

**Following pages** An Important Diamond and Yellow Diamond Necklace, Lot 204  
A Cultured Pearl Necklace, An Antique Pair of Diamond Bow Clips, A Diamond and Gold Ring, *Buccellati*, An Emerald and Diamond 'Trombino' Ring, *Bulgari*, Lot 79, 80, 11, 147  
A Diamond Ring, An Emerald and Diamond Ring, A Diamond Ring, Lot 105, 203, 85  
An Art Deco Diamond Bracelet, A Pair of Titanium and Gold Earclips, Jar, Lot 83, 193

**Back cover** An Enamel, Diamond and Gold Snake Bracelet, *Seaman Schepps*, Lot 190











## INDEX

Aldo Cipullo 72

Arthur King 6, 8

Boucheron 119, 117, 179

Buccellati 11, 13, 14, 70, 99, 114, 116,  
136, 137, 164, 165, 183, 184, 185, 186,  
187, 188

Bulgari 147, 167

Cartier 43, 98, 141, 180, 181, 195,  
196, 197

Chanel 38, 39

Chatila, The Royal Diamond 56

Chopard 16

David Webb 17, 73, 74, 100, 135,  
171, 172

Enigma 19, 20, 21, 60, 61

Garrard 7

Jar 168, 193

Jooal 189

Kutchinsky 118

Margherita Burgener 15, 18, 22, 25,  
27, 37, 52, 128, 129, 138, 140, 153,  
156, 159, 161, 162

Marina B. 169

Mauboussin 94

Rolex 9

Seaman Schepps 42

Tiffany & Co. 4, 26, 78, 92, 102,  
173, 174

Tiffany & Co. Schlumberger 2, 75, 76

Trianon 122

Van Cleef & Arpels 46, 101, 142,  
144, 175, 198, 199

Verdura 69, 96

Vita 3, 51







PHILLIPS.COM