

PHILLIPS



PHOTOGRAPHS FROM THE COLLECTION OF THE
ART INSTITUTE OF CHICAGO

ONLINE AUCTION 8-22 DECEMBER 2014



1

BERENICE ABBOTT 1898-1991

Fishermen, Fulton Street Dock, New York, 1929

Gelatin silver print, printed later.

6¾ x 8⅞ in. (17.1 x 22.5 cm)

Signed in pencil on the verso.

Estimate \$2,000-3,000



2

BERENICE ABBOTT 1898-1991

John Watts Statue: From Trinity Churchyard, Looking Toward One Wall Street, Manhattan, 1938

Gelatin silver print, printed later.

13¼ x 10⅝ in. (33.7 x 26.4 cm)

Signed in pencil on the mount; 'Maine' credit stamp on the reverse of the mount.

Estimate \$2,500-3,500



3

BERENICE ABBOTT 1898-1991

Lower Broadway, Bowling Green and Bay, 1937

Gelatin silver print.

9 $\frac{5}{8}$ x 7 $\frac{3}{4}$ in. (24.4 x 19.7 cm)

Titled by a Federal Arts Project employee, 'Changing New York' credit and 'Municipal Reference Library' stamps on the verso.

Estimate \$3,000-4,000



4

ANSEL ADAMS 1902-1984

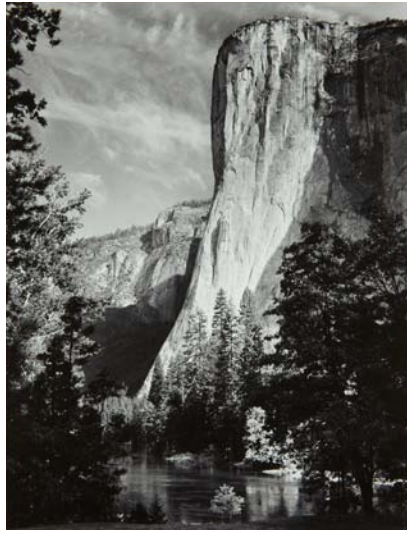
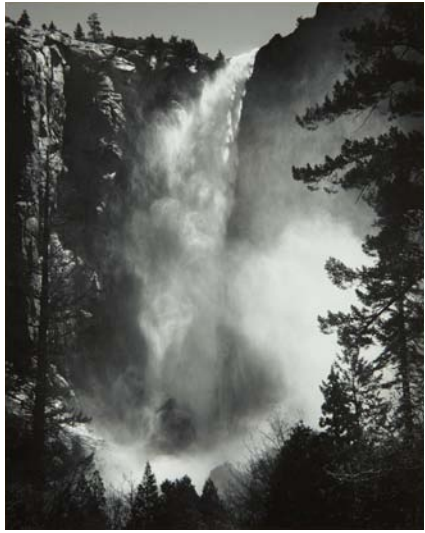
Burnt Stump and New Grass, Sierra Nevada, California, 1935

Gelatin silver print, printed no later than 1936.

9 $\frac{3}{8}$ x 6 $\frac{1}{8}$ in. (23.8 x 15.6 cm)

Signed in pencil on the mount; 'A Photograph by Ansel Adams' label and 'The Art Institute of Chicago' collection labels affixed to the reverse of the mount.

Estimate \$4,000-6,000



5

ANSEL ADAMS 1902-1984

Selected Images, circa 1927-1960

Six gelatin silver prints.

Each approximately 9 $\frac{5}{8}$ x 7 $\frac{5}{8}$ in. (24.4 x 19.4 cm) or the reverse.

Each initialed in pencil on the mount; each with 'Photographs of Yosemite' credit and title stamps on the reverse of the mount.

Estimate \$5,000-7,000



6

MANUEL ÁLVAREZ BRAVO 1902-2002

Cruce de Chalma (Cross at Chalma), 1942

Gelatin silver print, printed later.

9 1/8 x 6 3/8 in. (23.2 x 16.2 cm)

Signed and annotated 'Mexico' in pencil on the verso.

Estimate \$2,000-3,000



7

MANUEL ÁLVAREZ BRAVO 1902-2002

Diá de Todos Muertos (Day of All Dead), 1933

Gelatin silver print, printed later.

9 1/8 x 6 5/8 in. (23.2 x 16.8 cm)

Signed and annotated 'Mexico' in pencil on the verso.

Estimate \$2,000-3,000



8

MANUEL ÁLVAREZ BRAVO 1902-2002

Margarita de Bonampak (Margarita of Bonampak), 1949

Gelatin silver print, printed later.

9 1/8 x 7 1/8 in. (23.2 x 18.1 cm)

Signed and annotated 'Mexico' in pencil on the verso.

Estimate \$2,000-3,000



9

MANUEL ÁLVAREZ BRAVO 1902-2002

Ventana al Coro (Window to the Choir), 1936

Gelatin silver print, printed later.

8 $\frac{7}{8}$ x 6 $\frac{1}{8}$ in. (22.5 x 15.6 cm)

Signed and annotated 'Mexico' in pencil on the verso.

Estimate \$2,000-3,000



10

ANONYMOUS

Selected Images, 19th century

Thirteen daguerreotypes, five tintypes and three ambrotypes, seventeen in cases.

19 approximately 3½ x 3½ in. (8.9 x 7.9 cm), 16 encased;
one 8½ x 6½ in. (20.6 x 15.6 cm)

One tintype annotated in pencil on the reverse of the mount.

Estimate \$500-700



11

**BISSON FRÈRES: LOUIS-AUGUSTE BISSON and
AUGUST-ROSALIE BISSON** 1814-1876 & 1826-1900

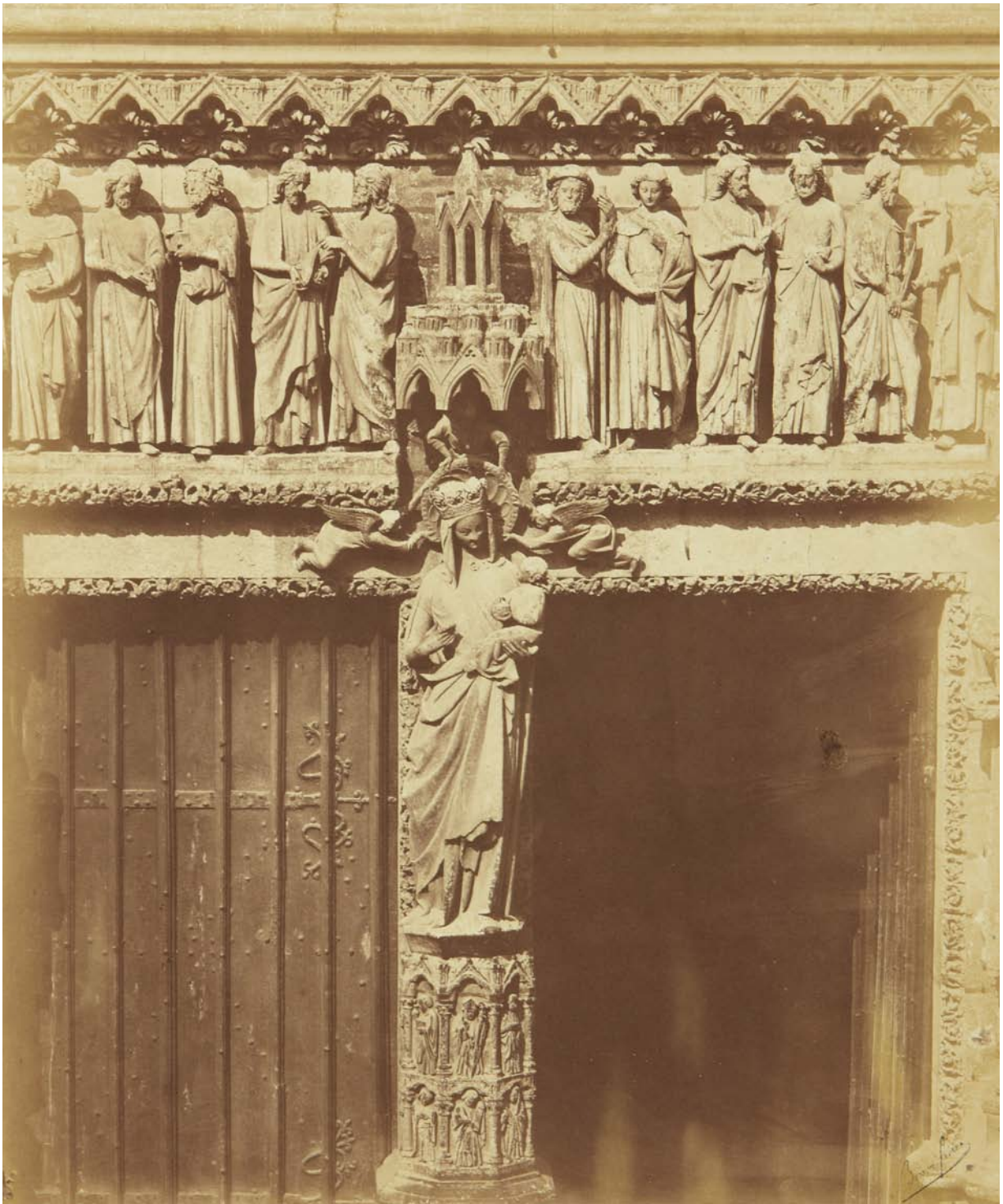
Rouen Cathedral, West Facade, circa 1855

Albumen print.

18 $\frac{5}{8}$ x 13 $\frac{5}{8}$ in. (47.3 x 34.6 cm)

Signature stamp, annotated 'Rouen' in an unidentified hand in pencil and
'Dépôt Général' blindstamp on the mount; 'The Art Institute of Chicago'
collection label affixed to the reverse of the mat.

Estimate \$500-800



12

**BISSON FRÈRES: LOUIS-AUGUSTE BISSON and
AUGUST-ROSALIE BISSON** 1814-1876 & 1826-1900

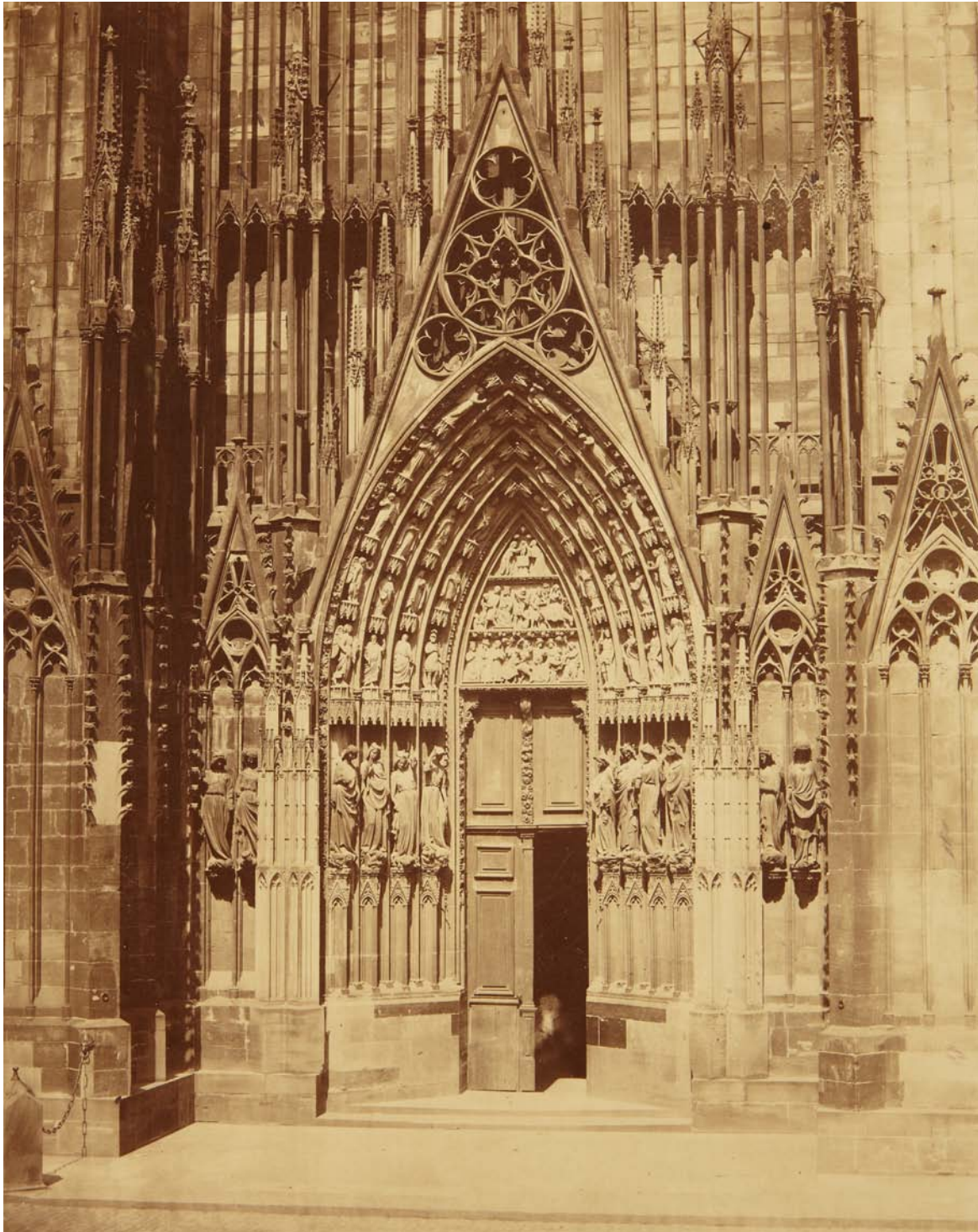
*South Transept Portal, Amiens Cathedral with Trameau Figure,
Vierge Dorée, 1853-1862*

Albumen print.

16¼ x 13½ in. (41.3 x 34.3 cm)

Signature stamp on the recto; annotated 'Amiens' in an unidentified hand in pencil, 'Dépôt Général' blindstamp and 'Collection A. Gilles' label affixed to the mount; 'The Art Institute of Chicago' collection label affixed to the reverse of the mat.

Estimate \$500-800



13

**BISSON FRÈRES: LOUIS-AUGUSTE BISSON and
AUGUST-ROSALIE BISSON** 1814-1876 & 1826-1900

Strasbourg Cathedral, West Facade; Side Portal, 1853-1862

Albumen print.

17½ x 13½ in. (43.5 x 34.3 cm)

Signature stamp, annotated 'Strasbourg' in an unidentified hand in pencil and 'Depot General' blindstamp on the mount; 'The Art Institute of Chicago' collection label affixed to the reverse of the mat.

Estimate \$500-800



14

BILL BRANDT 1904-1983

Crowded, Improvised Air-Raid Shelter in a Liverpool Street Tube Tunnel, 1940

Gelatin silver print, printed later.

9 1/8 x 7 3/4 in. (23.2 x 19.7 cm)

Credit stamp on the verso.

Estimate \$3,000-5,000



15

BILL BRANDT 1904-1983
Chiswick House Gardens, 1944
Gelatin silver print, printed later.
9 x 7¾ in. (22.9 x 19.7 cm)
Two credit stamps on the verso.

Estimate \$2,000-3,000



16

BILL BRANDT 1904-1983

Dressmaker's Dummy, Paris, 1928

Gelatin silver print, printed later.

9 x 7¾ in. (22.9 x 19.7 cm)

Annotated 'Go' in an unidentified hand in ink in the margin; credit stamp and annotated 'Gardens', 'Go' in an unidentified hand in ink on the verso.

Estimate \$3,000-5,000



17

BILL BRANDT 1904-1983
Evening in Kew Gardens, 1932
Gelatin silver print, printed later.
13½ x 11½ in. (33.3 x 28.3 cm)
Signed in ink on the mount.

Estimate \$3,000-5,000



18

BILL BRANDT 1904-1983

East Sussex, 1961

Gelatin silver print.

9 x 7¾ in. (22.9 x 19.7 cm)

Annotated '120' in ink in the margin; credit stamp and annotated in pencil on the verso.

Estimate \$3,000-5,000



19

BILL BRANDT 1904-1983

In the Garden of Christ's College, Cambridge, 1940s

Gelatin silver print, printed later.

13½ x 11½ in. (33.3 x 28.3 cm)

Signed in ink on the mount.

Estimate \$2,000-3,000



20

BILL BRANDT 1904-1983

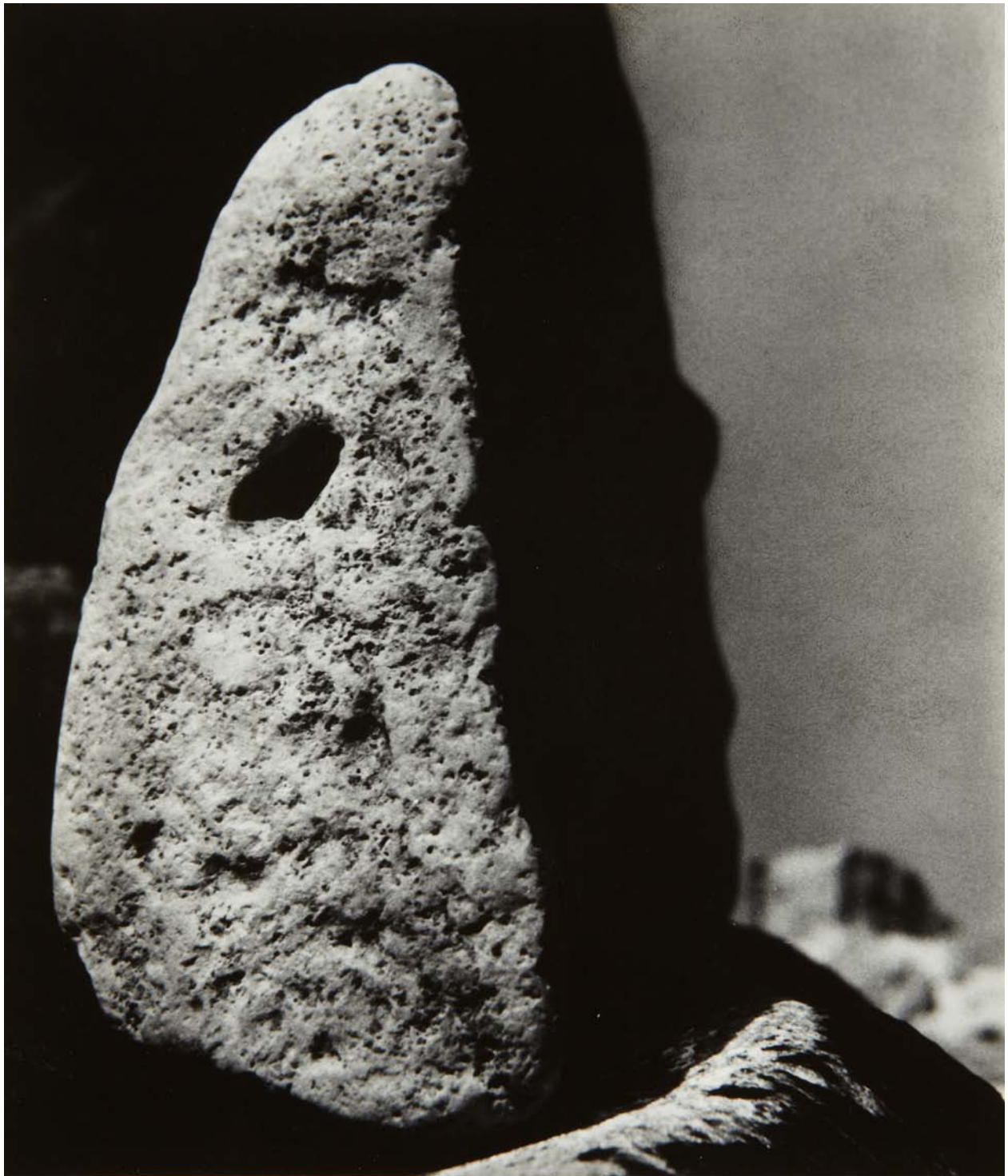
St. Paul's Cathedral in the Moonlight, 1942

Gelatin silver print, printed later.

9½ x 7¾ in. (23.2 x 19.7 cm)

Credit stamp on the verso.

Estimate \$3,000-5,000



21

BILL BRANDT 1904-1983

Untitled, n.d.

Gelatin silver print.

9 x 7¼ in. (22.9 x 19.7 cm)

Credit stamp on the verso.

Estimate \$3,000-5,000



22

BILL BRANDT 1904-1983

Maiden Castle, Dorset, 1945

Gelatin silver print, printed later.

9 x 7 $\frac{1}{2}$ in. (22.9 x 19.4 cm)

Credited, titled in an unidentified hand in pencil, ink, copyright and reproduction limitation stamps on the verso; 'Photo Researchers, Inc.' label affixed to the verso.

Estimate \$6,000-8,000



23

ELIZABETH BUEHRMANN 1886-1963

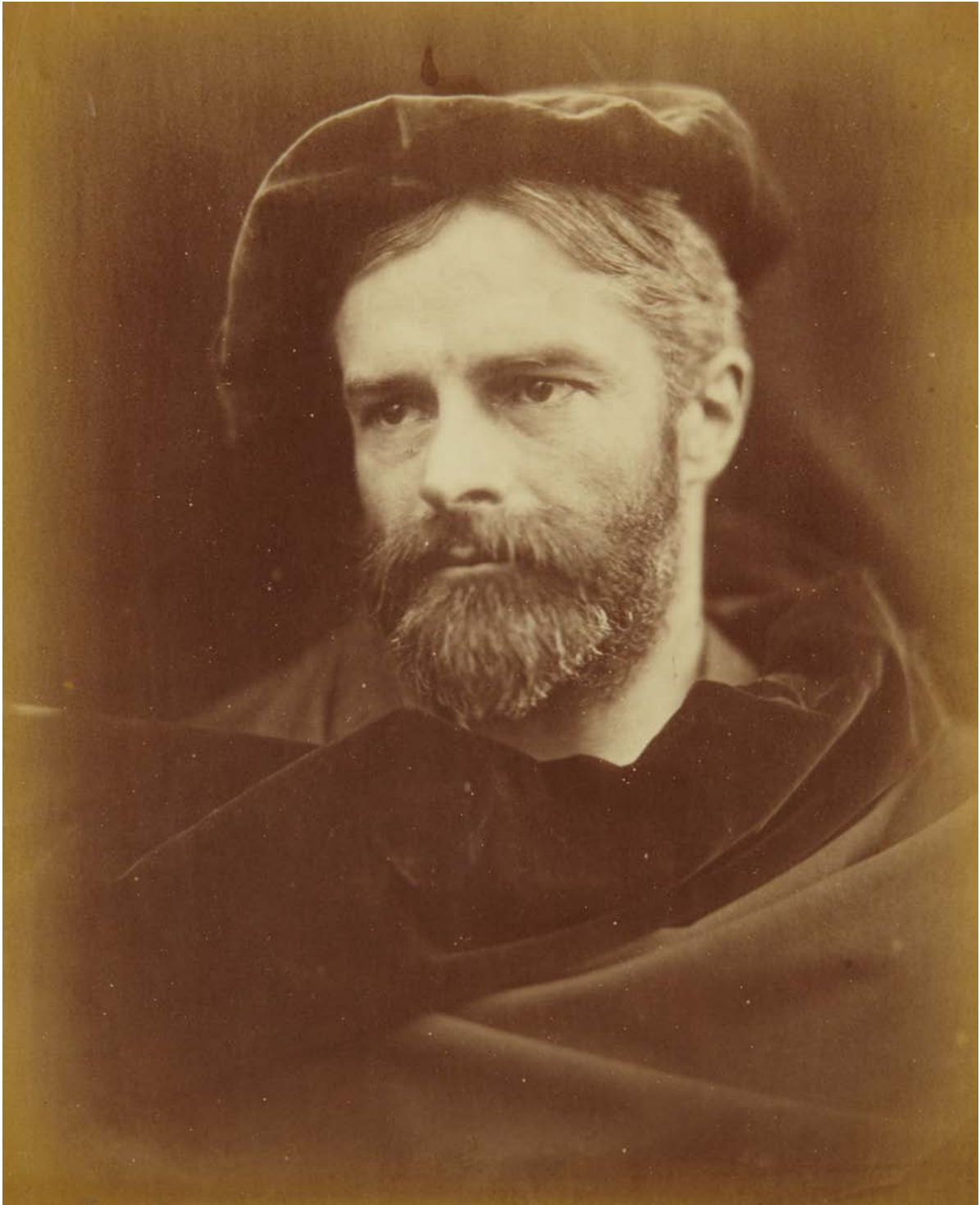
Selected Images, circa 1900

Ten gelatin silver prints.

Each approximately 9 $\frac{3}{8}$ x 7 $\frac{1}{8}$ in. (23.8 x 18.1 cm) or the reverse.

Each monogrammed in pencil on the recto; variously annotated in pencil on the mounts; one with printed credit and title on a label affixed to the reverse of the mount.

Estimate \$5,000-7,000



24

JULIA MARGARET CAMERON 1815-1879

Clinton Parry, circa 1868

Albumen print.

12 $\frac{7}{8}$ x 10 $\frac{3}{8}$ in. (32.7 x 26.4 cm)

Estimate \$2,000-3,000



25

JULIA MARGARET CAMERON 1815-1879

Julia Jackson, 1864

Albumen print.

8 $\frac{7}{8}$ x 6 $\frac{5}{8}$ in. (22.5 x 16.8 cm)

Annotated 'From Life', 'Registered Photograph', 'Copyright Julia Margaret Cameron' in an unidentified hand in ink and 'Colnaghi' blindstamp on the mount.

Estimate \$4,000-6,000



26

JULIA MARGARET CAMERON 1815-1879

Mrs. Herbert Duckworth, September, 1874

Albumen print.

14 $\frac{1}{8}$ x 9 $\frac{5}{8}$ in. (35.9 x 24.4 cm)

Signed, dated, annotated 'From Life' and 'Registered Photograph' in ink on the mount.

Estimate \$2,500-3,500



27

JULIA MARGARET CAMERON 1815-1879

Mrs. Herbert Duckworth, August, 1872

Albumen print.

13 x 9⁵/₈ in. (33 x 24.4 cm)

Signed, dated, annotated 'From Life' and 'Registered Photograph' in ink on the mount.

Estimate \$2,500-3,500



28

JULIA MARGARET CAMERON 1815-1879

Sir Edward Ryan, 1872-1874

Albumen print.

13 $\frac{5}{8}$ x 10 $\frac{1}{4}$ in. (34.6 x 26 cm)

Stamped 'From Life' and 'Copyright Julia Margaret Cameron' on the mount.

Estimate \$2,500-3,500



29

JULIA MARGARET CAMERON 1815-1879

Mrs. Herbert Duckworth, 1872

Albumen print.

13 x 10 in. (33 x 25.4 cm)

'The Art Institute of Chicago' collection label affixed to the reverse of the mat.

Estimate \$2,500-3,500



30

JULIA MARGARET CAMERON 1815-1879

Woman, Ceylon, 1875-1879

Albumen print.

8¾ x 6⅞ in. (22.2 x 17.5 cm)

Estimate \$2,500-3,500



31

EDWARD SHERIFF CURTIS 1868-1952

Selected Images from The North American Indian, 1907-1926

Eight photogravures, five on vellum, three on tissue.

Each approximately 15½ x 11 in. (38.4 x 27.9 cm) or the reverse

Each with the letterpress title, plate number, copyright credit and printer's credit in the margin.

Estimate \$2,000-3,000



32

MICHAEL DISFARMER 1884-1959

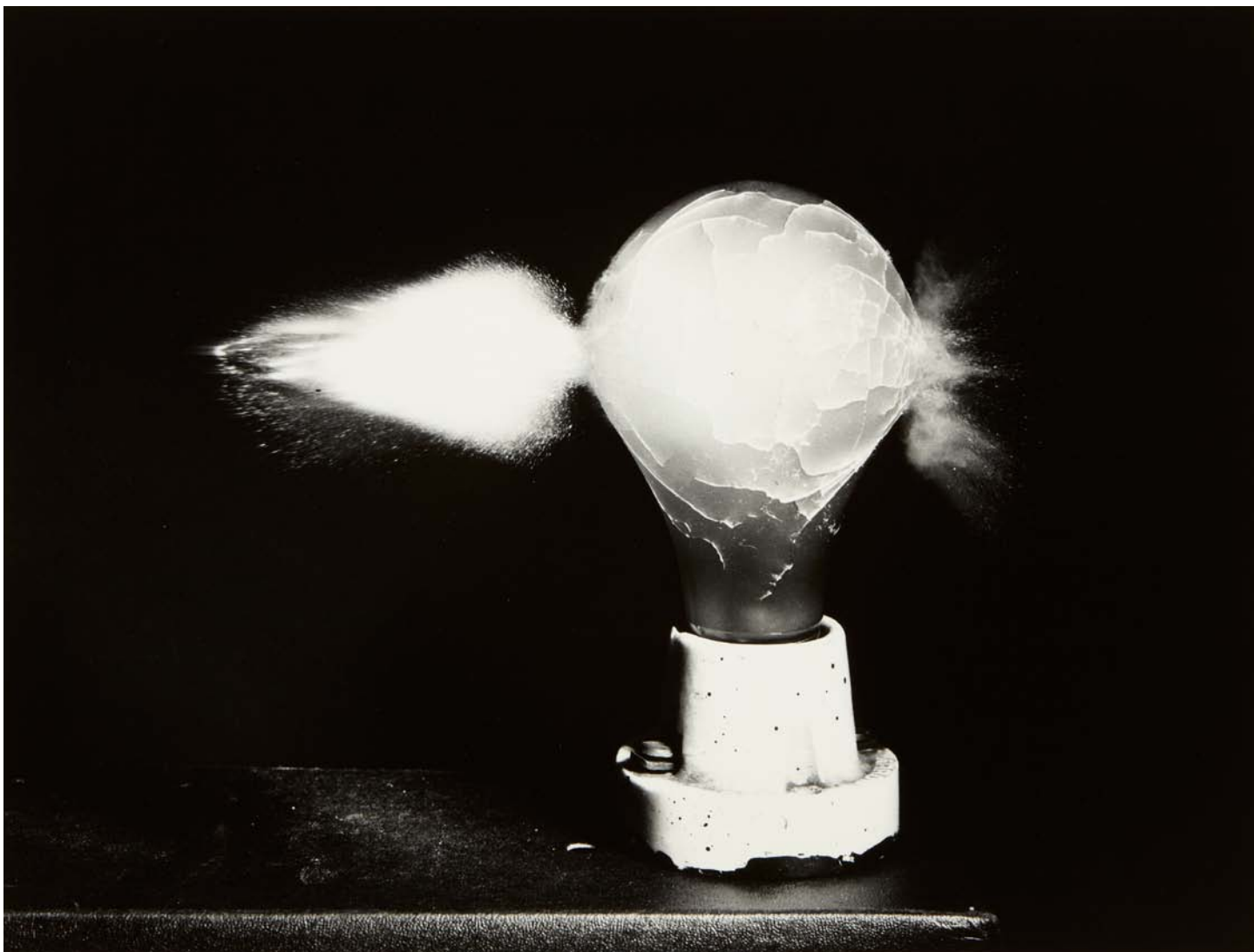
Selected Images, circa 1940

Three gelatin silver prints.

Each approximately 4½ x 2½ in. (10.5 x 6.4 cm).

Each with 'Original Disfarmer Photograph' credit stamp on the reverse of the mount; 'The Art Institute of Chicago' collection label affixed to the mat.

Estimate \$4,000-6,000



33

HAROLD EUGENE EDGERTON 1903-1990

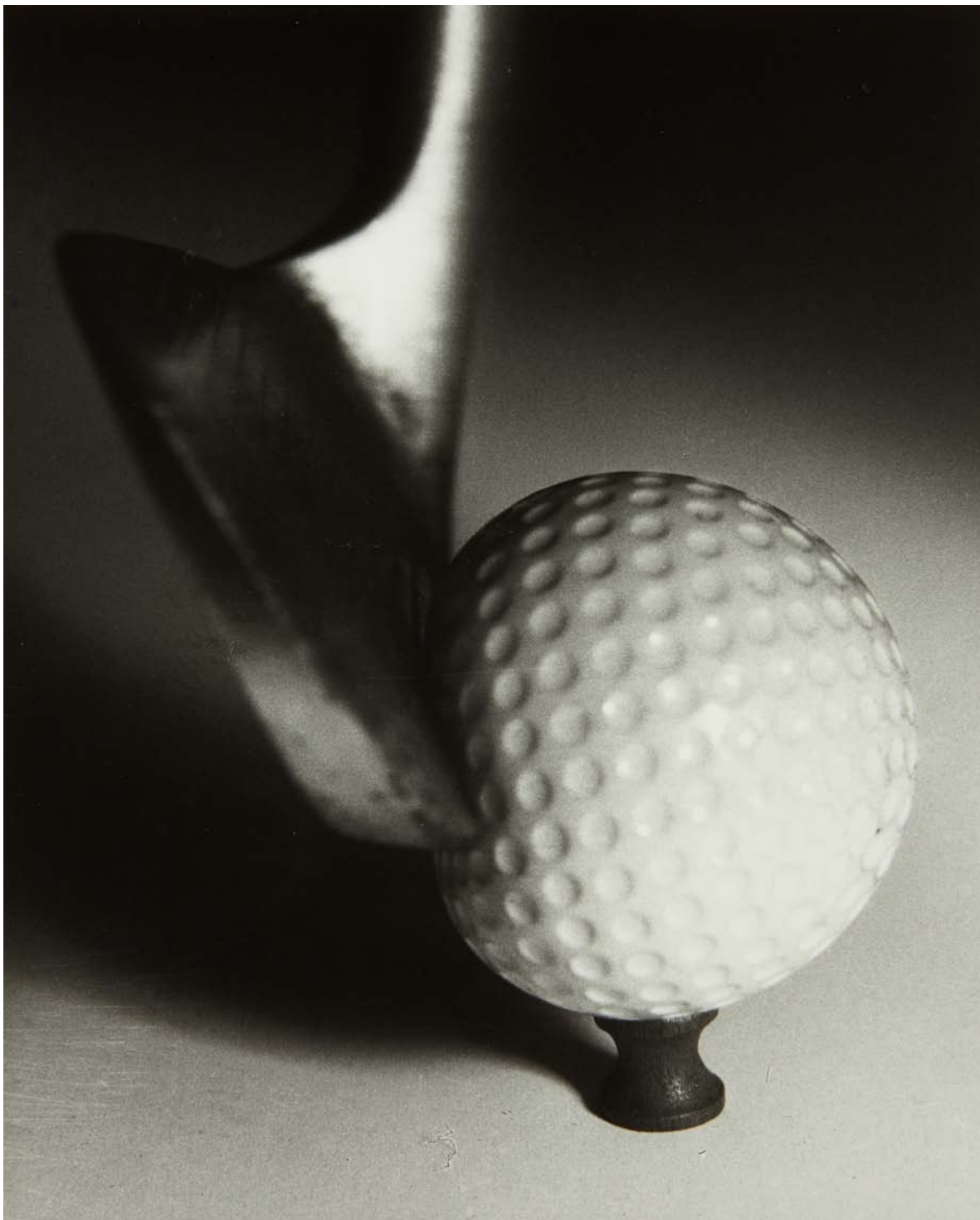
Bullet Through Bulb, 1936

Gelatin silver print, printed later.

16½ x 21¾ in. (41.9 x 55.2 cm)

Signed and numbered 23/25 in pencil on the verso.

Estimate \$1,000-2,000



34

HAROLD EUGENE EDGERTON 1903-1990

Driving the Golf Ball, 1930s

Gelatin silver print, printed later.

9 $\frac{3}{8}$ x 7 $\frac{5}{8}$ in. (23.8 x 19.4 cm)

Estate credit stamp on the verso.

Estimate \$4,000-6,000



35

HAROLD EUGENE EDGERTON 1903-1990

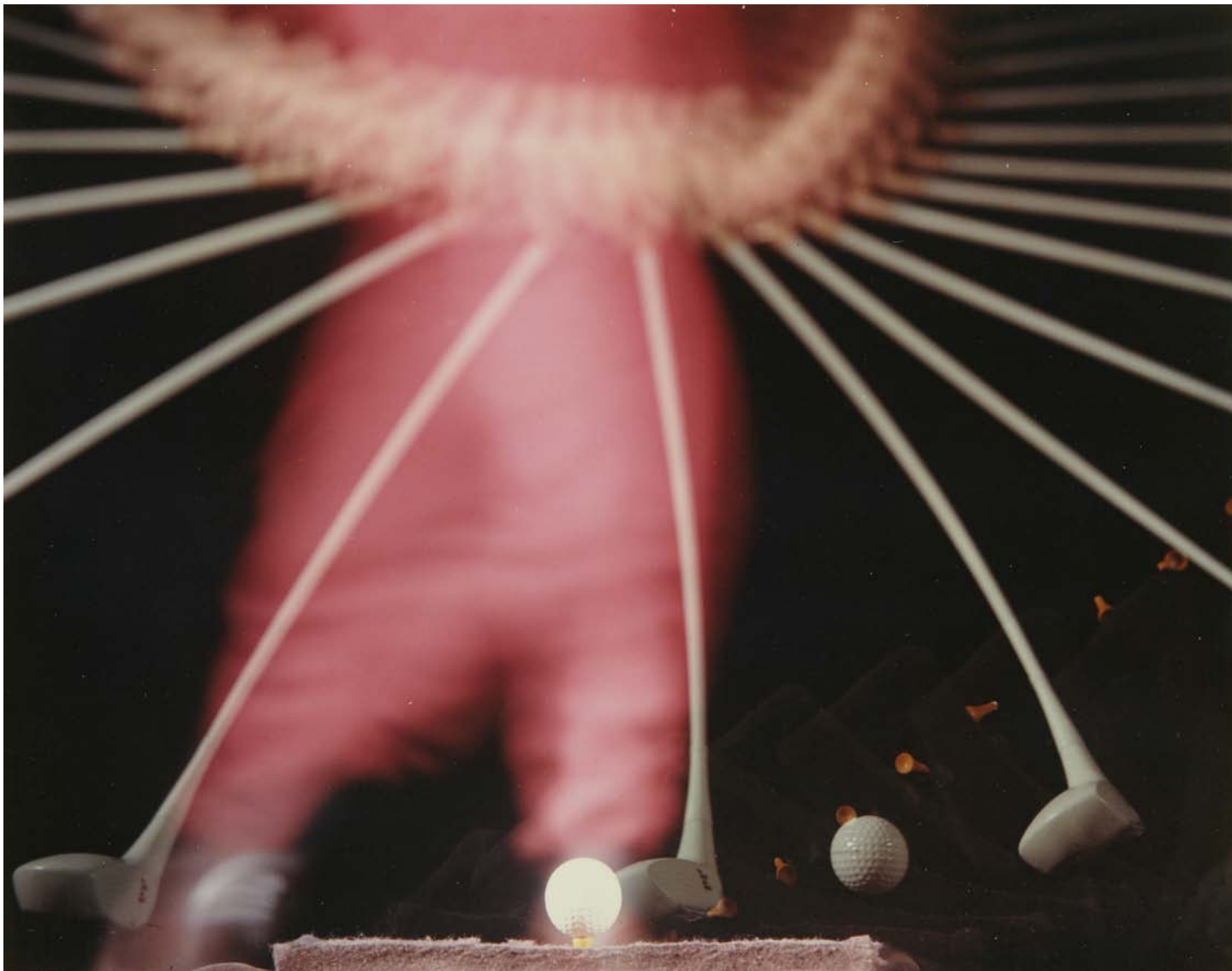
Football Kick, circa 1938

Chromogenic print, printed later.

17½ x 13½ in. (44.5 x 34.3 cm)

Signed in ink in the margin; annotated 'H.E. 4' in ink on the verso.

Estimate \$800-1,200



36

HAROLD EUGENE EDGERTON 1903-1990

Golf Tee-Off, 1962

Chromogenic print, printed later.

7 $\frac{3}{8}$ x 9 $\frac{3}{8}$ in. (18.7 x 23.8 cm)

Credit 'M.I.T. Cambridge, Mass.', estate credit and 'EG&G Inc.' stamps on the verso.

Estimate \$800-1,200



37

HAROLD EUGENE EDGERTON 1903-1990

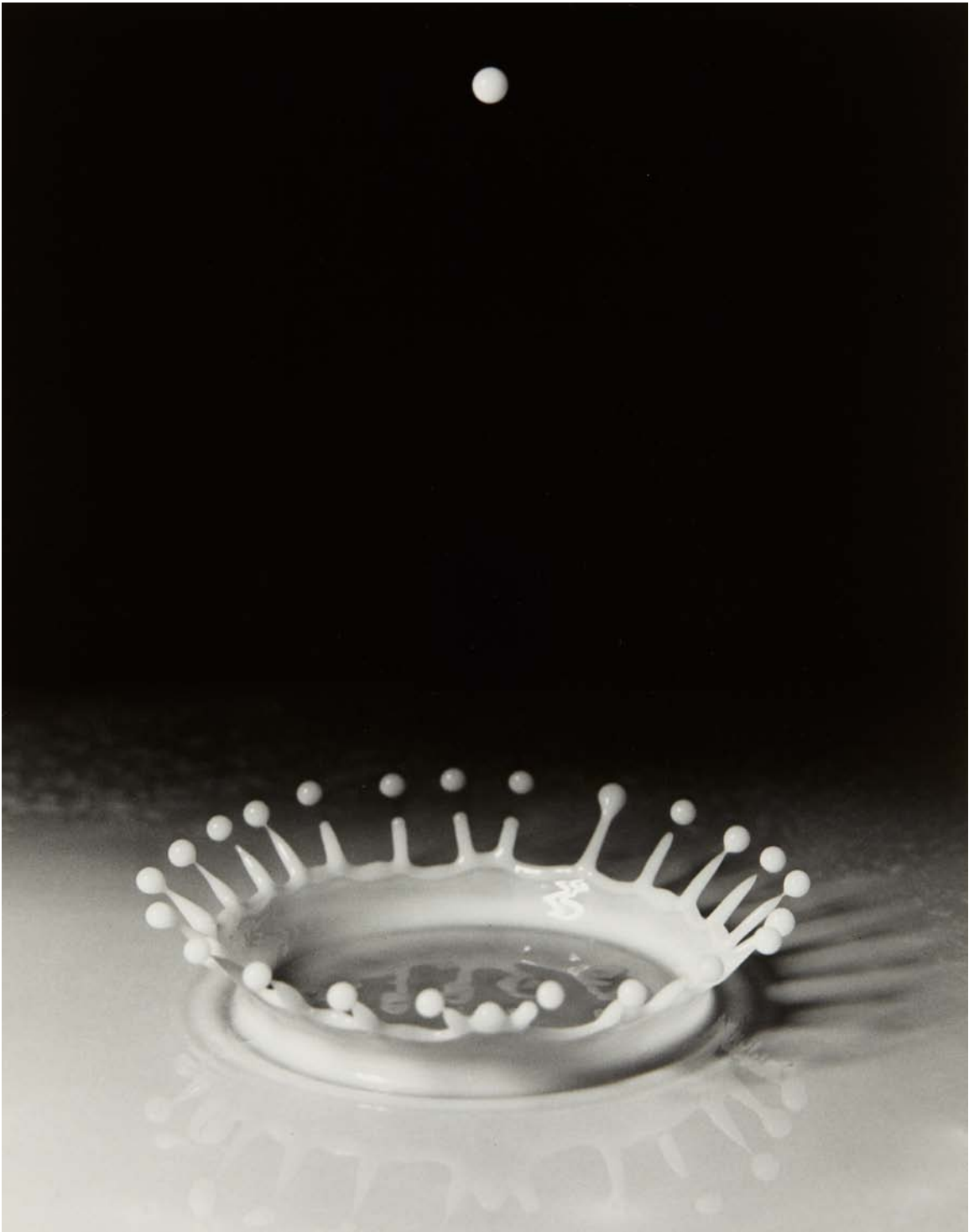
"Home brew": Getting Off the Horse Quickly, 1940

Gelatin silver print, printed later.

17 x 14 $\frac{1}{8}$ in. (43.2 x 35.9 cm)

Signed and numbered 41/50 in pencil on the verso.

Estimate \$1,000-2,000



38

HAROLD EUGENE EDGERTON 1903-1990

Milk Drop Coronet, 1957

Gelatin silver print, printed later.

18 x 14¼ in. (45.7 x 36.2 cm)

Signed and numbered 54/90 in pencil on the verso.

Estimate \$3,000-5,000



39

HAROLD EUGENE EDGERTON 1903-1990

Moscow Circus Acrobats, 1963

Chromogenic print, printed later.

7 $\frac{3}{8}$ x 10 $\frac{1}{8}$ in. (18.7 x 25.7 cm)

Estimate \$800-1,200



40

HAROLD EUGENE EDGERTON 1903-1990

Tumblers, 1942

Gelatin silver print, printed later.

21 $\frac{3}{8}$ x 16 $\frac{1}{4}$ in. (54.3 x 41.3 cm)

Signed and numbered 25/25 in pencil on the verso.

Estimate \$1,000-2,000



41

HAROLD EUGENE EDGERTON 1903-1990

Pigeon in flight, 1965

Dye transfer print, printed later.

14¼ x 18 in. (36.2 x 45.7 cm)

Signed in ink in the margin.

Estimate \$3,000-4,000



42

HAROLD EUGENE EDGERTON 1903-1990

Tap Water Splashing from a Glass, circa 1934

Gelatin silver print, printed later.

12 $\frac{5}{8}$ x 8 $\frac{3}{8}$ in. (32.1 x 21.3 cm)

Signed and numbered 50/50 in pencil on the verso.

Estimate \$1,000-2,000



43

HAROLD EUGENE EDGERTON 1903-1990

Football Kick - Wesley E. Fesler, 1934

Gelatin silver print, printed later.

17⁵/₈ x 14¹/₈ in. (44.8 x 35.9 cm)

Signed and annotated 'HE. 201' in pencil on the verso.

Estimate \$2,000-3,000



44

ELIOT ELISOFFON 1911-1973

The Coast of Chile, 1950; and Virginia's Coast, 1946

Two gelatin silver prints.

(i) 9 $\frac{3}{8}$ x 12 $\frac{7}{8}$ in. (23.8 x 32.7 cm)

(ii) 19 x 15 $\frac{1}{2}$ in. (48.3 x 39.4 cm)

(i) 'The Art Institute of Chicago' collection label affixed to the reverse of the mat.

(ii) Signed, dated and inscribed 'To my friend Abe from Eliot' in ink in the margin;

'Life Photo' credit stamp on the verso.

Estimate \$1,000-1,500



45

WALKER EVANS 1903-1975

Company Store, Hecla, West Virginia; and Storefront, Selma, Alabama, 1935

Two gelatin silver prints, printed later.

Each approximately 7½ x 9½ in. (19.1 x 24.1 cm)

Each with Lunn Archive credit stamp on the verso.

Estimate \$3,000-5,000



46

WALKER EVANS 1903-1975

Selected Images, circa 1935

Four gelatin silver prints, printed later.

Each approximately 7½ x 9½ in. (19.4 x 24.1 cm)

Each with Lunn archive credit stamp on the verso; one with 'Box 310 Rte. 3' credit and 'Rights Reserved' stamps on the verso.

Estimate \$4,000-6,000



47

WALKER EVANS 1903-1975

Selected Images, 1932

Four gelatin silver prints, two mounted.

Each approximately 7¼ x 5½ in. (18.4 x 14.3 cm) or the reverse.

One annotated in ink and each with Lunn Archive credit stamp on the verso or reverse of the mount.

Estimate \$6,000-8,000



48

WALKER EVANS 1903-1975

View of Ossining, New York, 1930

Gelatin silver print, printed later.

6⅞ x 8¼ in. (16.2 x 21 cm)

Lunn Archive credit stamp on the verso.

Estimate \$3,000-5,000



49

WALKER EVANS 1903-1975

Selected Images, 1935

Five gelatin silver prints, printed later.

Each approximately 7 $\frac{3}{8}$ x 9 $\frac{1}{2}$ in. (18.7 x 24.1 cm) or the reverse.

Each with Lunn Archive credit stamp on the verso.

Estimate \$6,000-8,000



50

ROGER FENTON 1819-1869

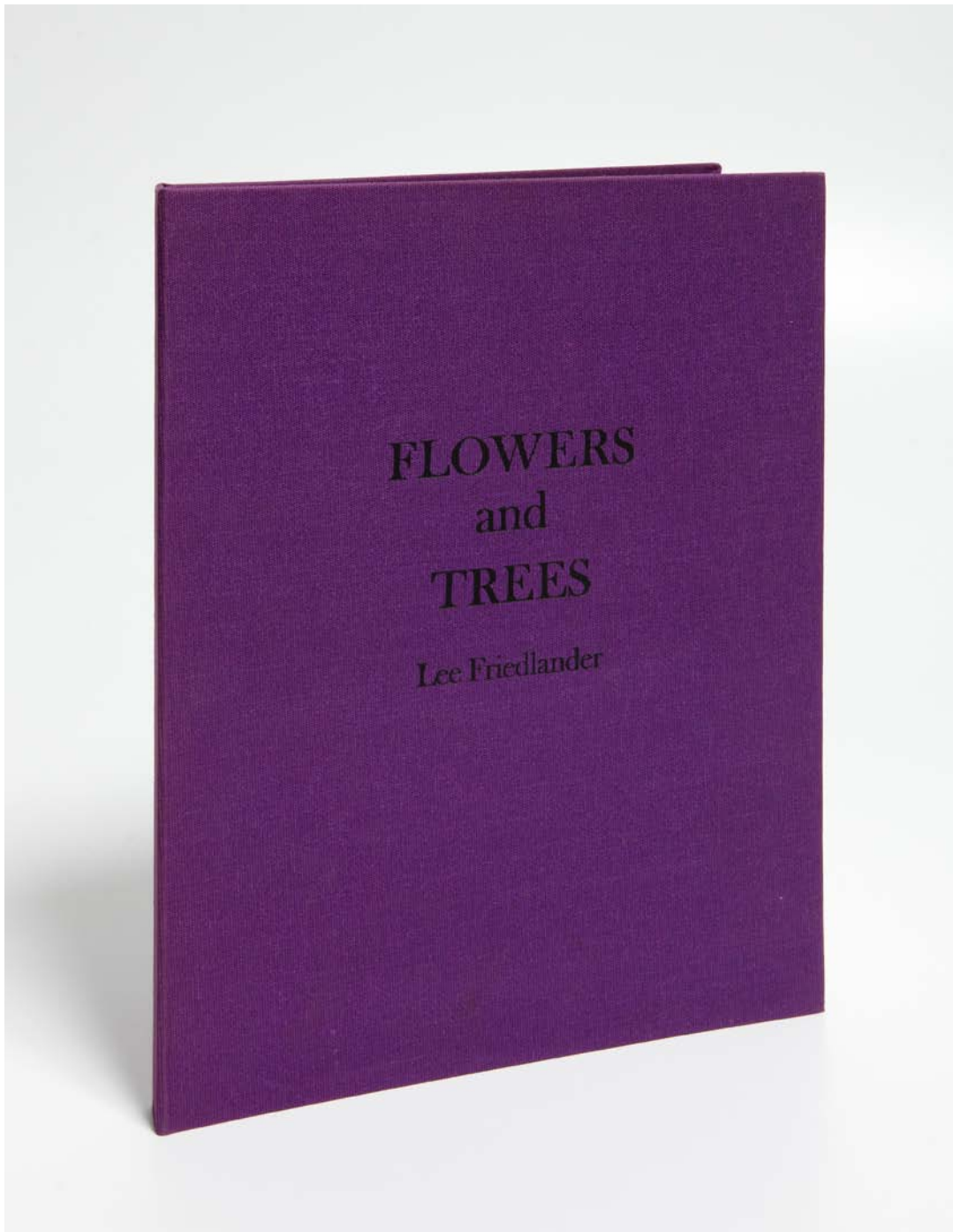
Selected Images, 1855

Fourteen albumen prints.

Each approximately 7¾ x 6⅞ in. (19.7 x 15.6 cm)

Each variously titled and annotated in ink on the mount and the reverse of the mount.

Estimate \$3,000-5,000



51

PROPERTY FROM THE COLLECTION OF ROBERT A. TAUB,
SOLD TO BENEFIT THE ACQUISITION FUNDS

LEE FRIEDLANDER b. 1934

Flowers and Trees,

New York: Haywire Press, 1981.

15 x 12 x 1 in. (38.1 x 30.5 x 2.5 cm)

Signed in pencil by the artist on the dedication page. 40 black and white photographs. Spiral bound book with purple cloth cover with front cover lettered in black.

Estimate \$800-1,200



52

BARON WILHELM VON GLOEDEN 1856-1931

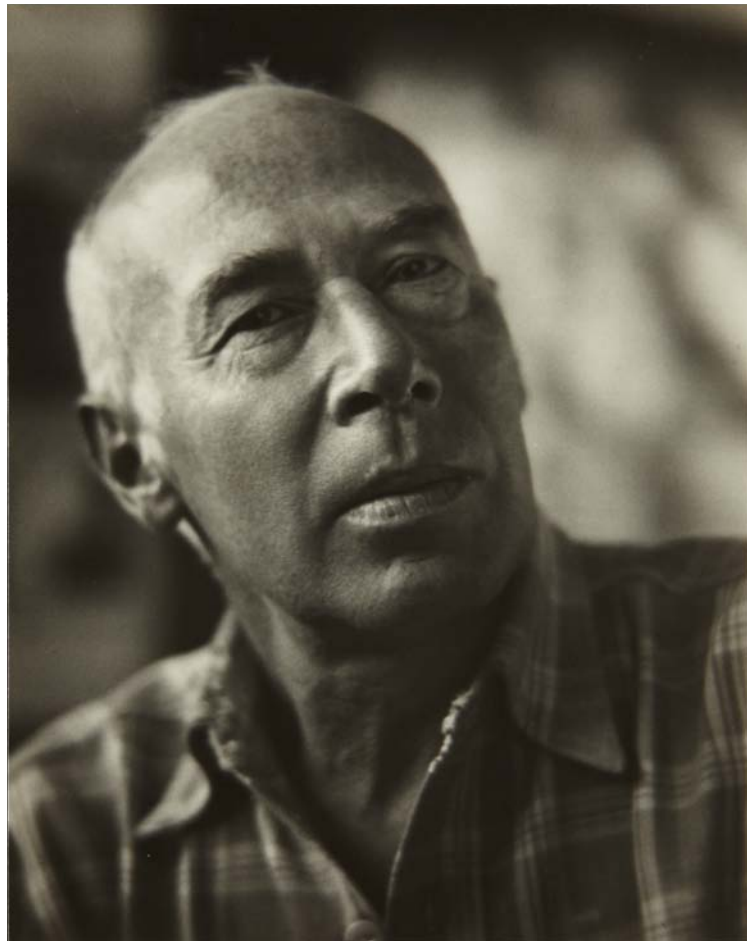
Selected Images, 1890s-1920s

Three albumen prints.

Each approximately 8½ x 6⅝ in. (21.6 x 16.8 cm)

One with credit stamp on the verso.

Estimate \$2,000-3,000



53

JOHAN HAGEMEYER 1884-1962

William H. Orrick, Attorney, 1931; Henry Miller, 1946

Two gelatin silver prints.

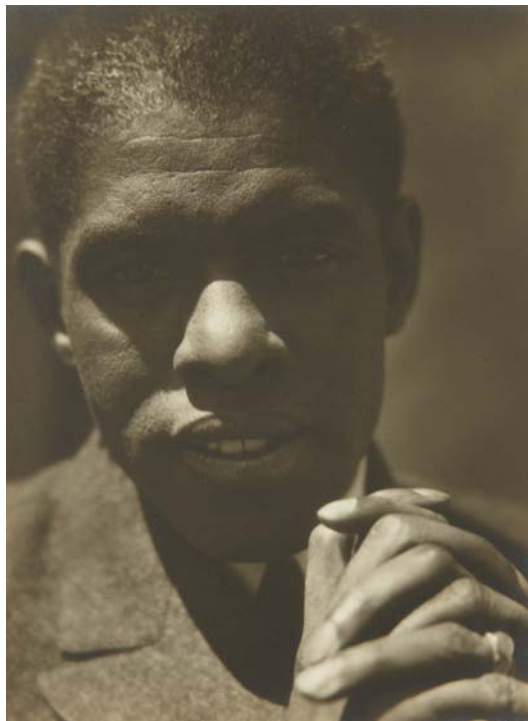
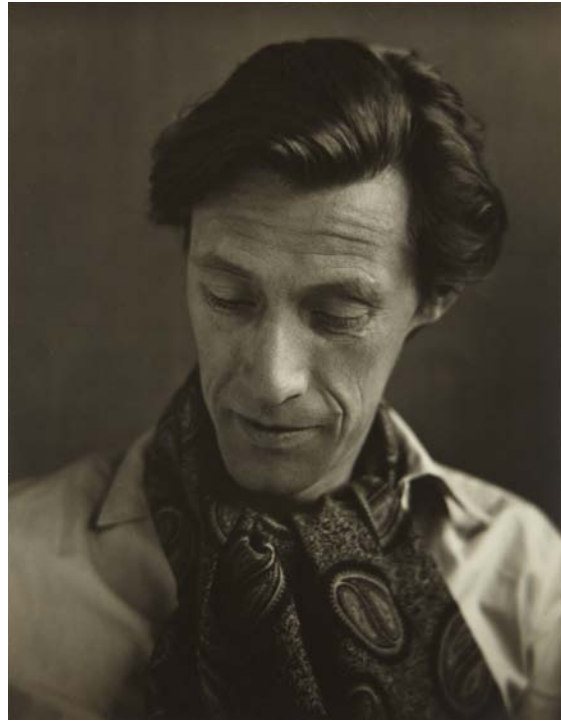
(i) 8 $\frac{5}{8}$ x 6 $\frac{3}{4}$ in. (21.9 x 17.1 cm)

(ii) 6 $\frac{3}{4}$ x 4 $\frac{3}{4}$ in. (17.1 x 12.1 cm)

(i) Signed and dated in pencil on the mount; initialed in pencil and credit stamp on the verso.

(ii) Signed and dated in pencil on the mount; signed, dated in pencil and credit stamp on the verso; signed, titled and dated in pencil on the reverse of the mount.

Estimate \$2,000-3,000



54

JOHAN HAGEMEYER 1884-1962

Selected Images, 1927-1944

Three gelatin silver prints.

Two approximately 8 $\frac{1}{4}$ x 6 $\frac{5}{8}$ in. (22.5 x 16.8 cm),
one 9 $\frac{1}{4}$ x 7 $\frac{1}{8}$ in. (23.5 x 18.1 cm)

Each signed, dated and two titled in pencil on the mount;
two with credit stamps on the verso.

Estimate \$5,000-7,000



55

LEWIS WICKES HINE 1874-1940

Carousel, Coney Island, New York, 1912

Gelatin silver print.

4 $\frac{3}{8}$ x 6 $\frac{1}{4}$ in. (11.1 x 15.9 cm)

'Hine Photo Company, Yonkers' credit and title stamps on the verso; 'The Art Institute of Chicago' collection label affixed to the reverse of the mat.

Estimate \$1,000-1,500



56

LEWIS WICKES HINE 1874-1940

Selected Images, 1914-1917

Three gelatin silver prints.

Each approximately 4¾ x 6¾ in. (12.1 x 17.1 cm)

One credited, dated and annotated in pencil on the verso; two with facsimile printed descriptions affixed to the mat.

Estimate \$3,000-5,000



57

LEWIS WICKES HINE 1874-1940

Selected Images, 1910-1921

Three gelatin silver prints, two printed later by Warren Stevens.

Varying sizes from 4 $\frac{5}{8}$ x 3 $\frac{5}{8}$ in. (11.7 x 9.2 cm) to 5 x 7 in. (12.7 x 17.8 cm)

One dated, annotated in an unidentified hand in pencil and 'Hastings-On-Hudson' credit stamp on the verso; 'The Art Institute of Chicago' collection label affixed to the reverse of the mat.

Estimate \$600-900



58

LEWIS WICKES HINE 1874-1940

Selected Images, 1920

Five gelatin silver prints.

Four approximately 6 $\frac{7}{8}$ x 5 in. (17.5 x 12.7 cm), one 4 $\frac{7}{8}$ x 6 $\frac{7}{8}$ in. (12.4 x 17.5 cm)

Each with 'Hastings-On-Hudson' credit stamp and variously annotated and dated in pencil on the verso; four with 'The Art Institute of Chicago' collection labels on the reverse of the mat.

Estimate \$5,000-7,000



59

LEWIS WICKES HINE 1874-1940

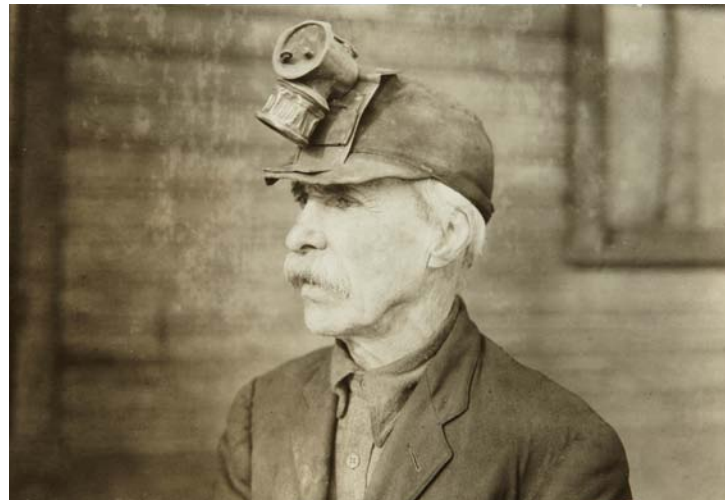
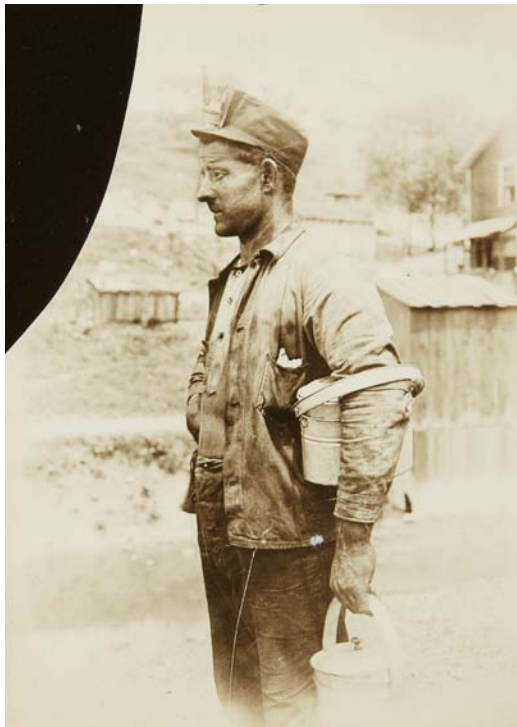
Selected Images, 1909-1920

Five gelatin silver prints.

Four approximately 7 x 4 $\frac{1}{8}$ in. (17.8 x 12.4 cm) or the reverse, one 7 $\frac{3}{4}$ x 10 in. (19.7 x 25.4 cm)

Each variously annotated, dated and four with 'Hastings-On-Hudson' credit stamp on the verso; each with printed description and date on labels affixed to the reverse of the overmat; 'The Art Institute of Chicago' collection label affixed to the reverse of the mat.

Estimate \$5,000-7,000



60

LEWIS WICKES HINE 1874-1940

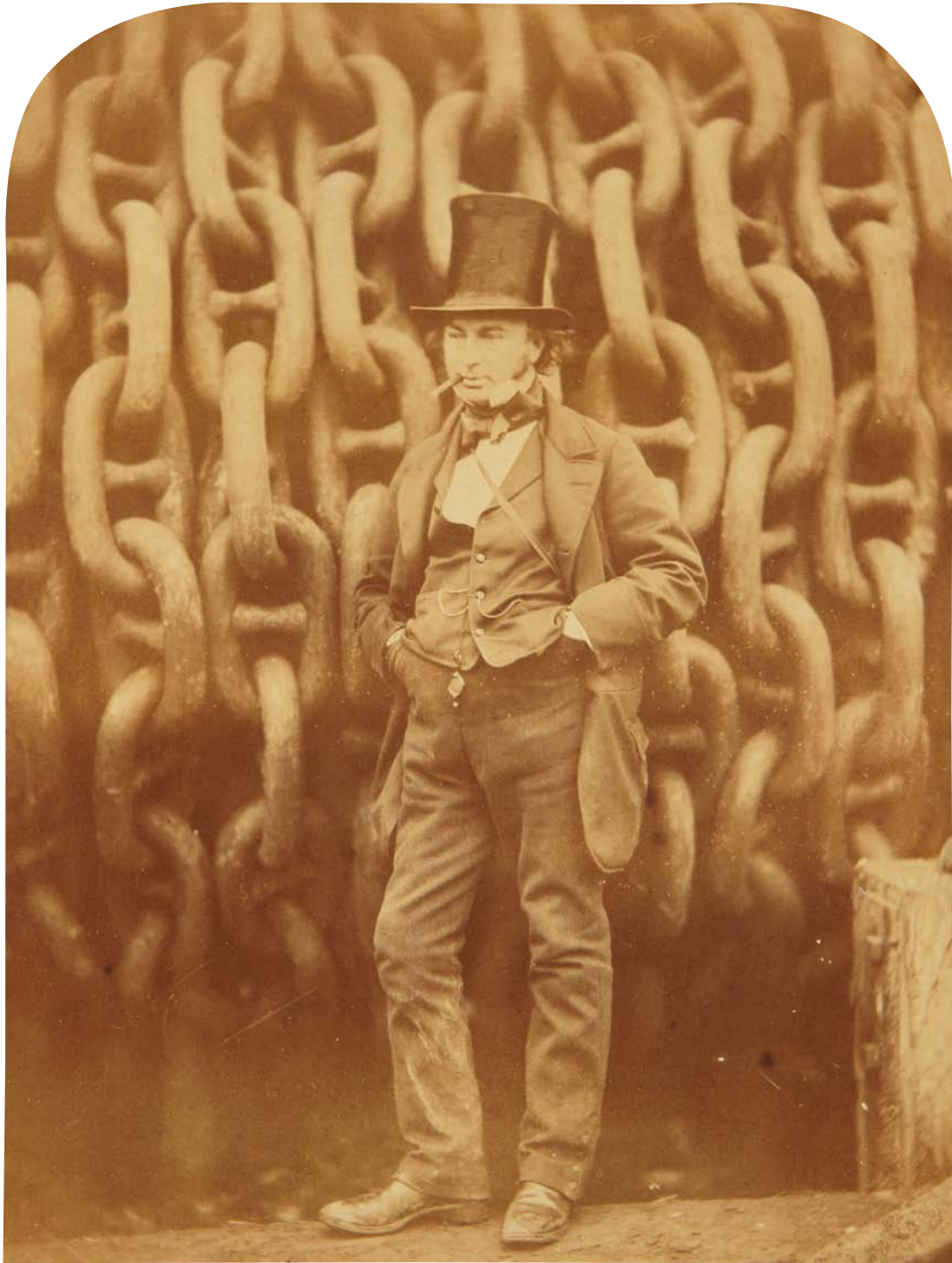
Selected Images, 1909-1921

Four gelatin silver prints.

Each approximately 4¾ x 6⅝ in. (12.1 x 16.8 cm) or the reverse.

Each titled, dated in ink or pencil and 'Hastings-On-Hudson' credit stamp on the verso; each with 'The Art Institute of Chicago' collection label affixed to the reverse of the mat.

Estimate \$4,000-6,000



61

PROPERTY FROM THE COLLECTION OF ROBERT A. TAUB,
SOLD TO BENEFIT THE ACQUISITION FUNDS

ROBERT HOWLETT 1831-1858

Isambard Kingdom Brunel, Builder of the Steamship "Leviathan (The Great Eastern)," Standing Against the Launching Chains, 1857

Albumen print.

10 $\frac{3}{4}$ x 8 $\frac{1}{2}$ in. (27.3 x 20.6 cm)

Estimate \$3,000-5,000



62

GERTRUDE KÄSEBIER 1852-1934

Portrait of a Boy; Flora, circa 1897

Two photogravures.

Each approximately 6½ x 4 in. (15.6 x 10.2 cm)

One with 'The Art Institute of Chicago' collection label affixed to the reverse of the mat.

Estimate \$800-1,200



63

GERTRUDE KÄSEBIER 1852-1934

Cornelia Montgomery, full face, holding flowers, square-necked gown, 1900

Gum bichromate print on Japanese tissue.

11¾ x 8½ in. (28.9 x 21.6 cm)

'The Art Institute of Chicago' collection label affixed to the reverse of the mount.

Estimate \$4,000-6,000



64

GERTRUDE KÄSEBIER 1852-1934

Cornelia Montgomery, full face, holding flowers, square-necked gown, 1900

Gum bichromate print on Japanese tissue.

11 $\frac{3}{8}$ x 7 $\frac{3}{4}$ in. (28.9 x 19.7 cm)

Signed in pencil on the recto; Brooklyn Institute of Arts and Sciences label affixed to the reverse of the mount; 'The Art Institute of Chicago' collection label affixed to the reverse of the mat.

Estimate \$5,000-7,000



65

GERTRUDE KÄSEBIER 1852-1934

Portrait of the Artist's Daughter (Hermine Käsebier), 1906-1910

Gum bichromate print.

8 x 6 in. (20.3 x 15.2 cm)

'The Art Institute of Chicago' collection label affixed to the reverse of the mat.

Estimate \$5,000-7,000



66

GERTRUDE KÄSEBIER 1852-1934

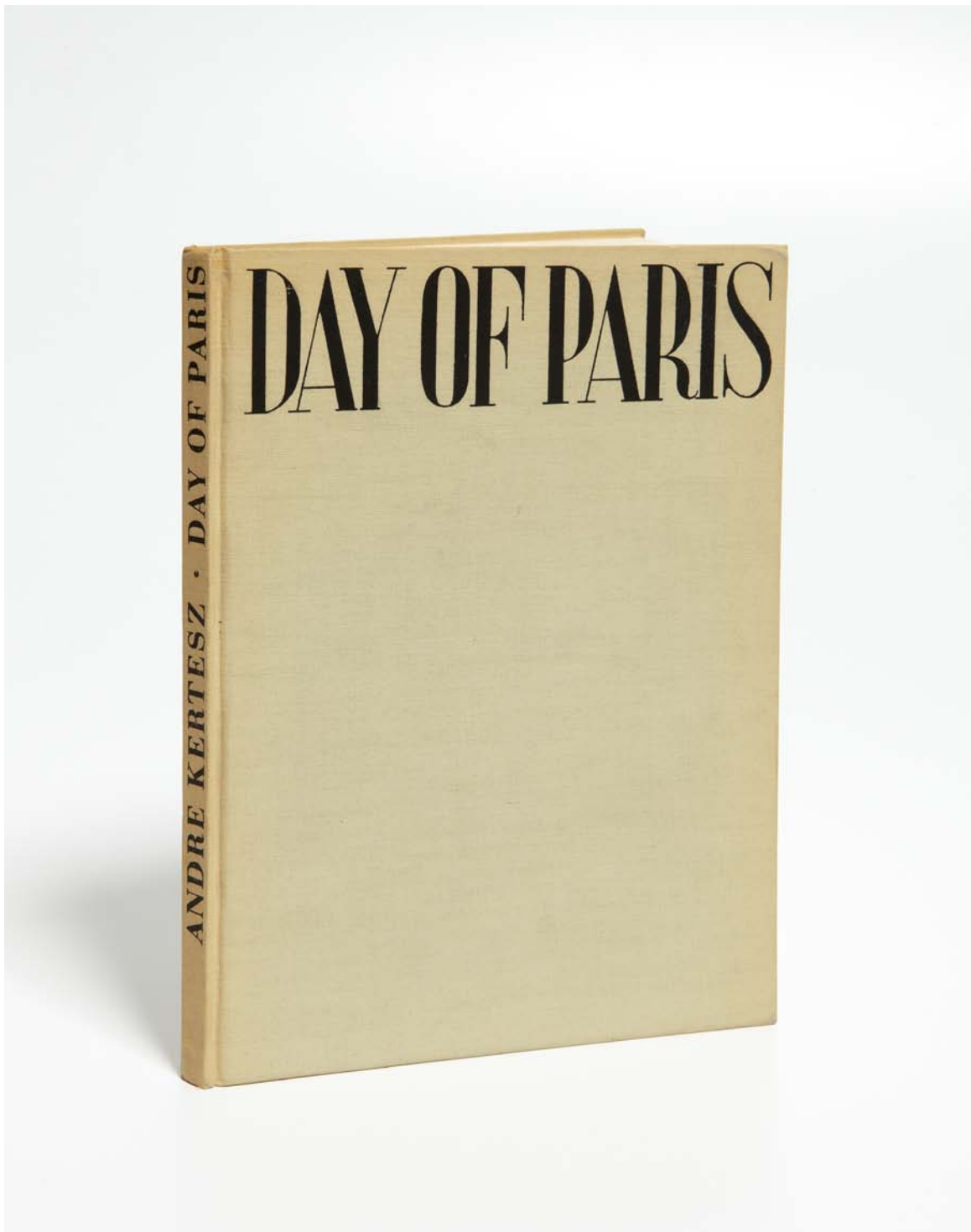
Yoked and Muzzled - Marriage, 1915 or earlier

Gelatin silver print on tissue.

9⅞ x 11½ in. (23.2 x 29.2 cm)

'The Art Institute of Chicago' collection label affixed to the reverse of the mount.

Estimate \$5,000-7,000



67

PROPERTY FROM THE COLLECTION OF ROBERT A. TAUB,
SOLD TO BENEFIT THE ACQUISITION FUNDS

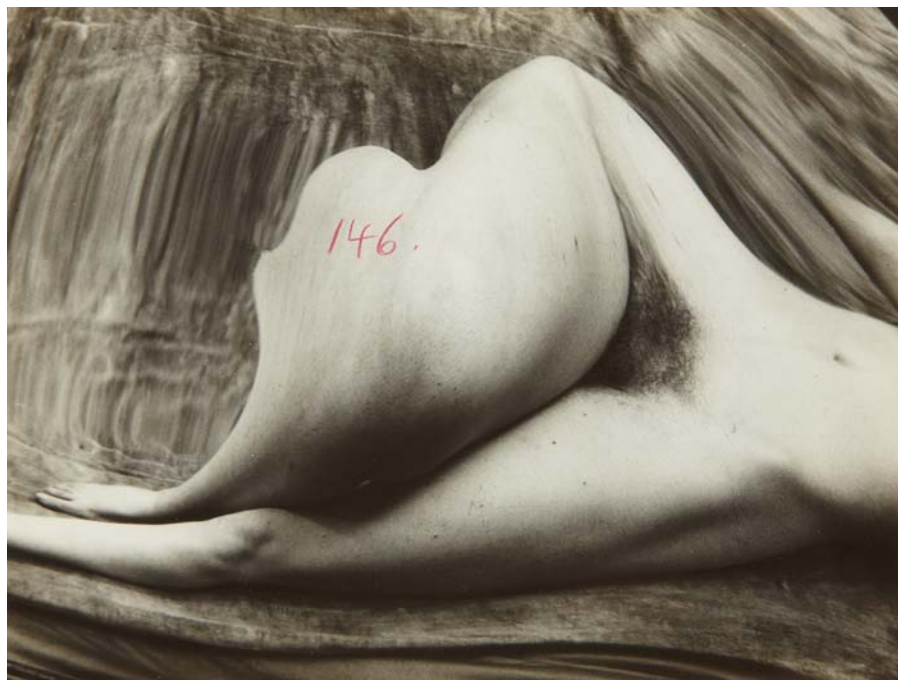
ANDRÉ KERTÉSZ 1894-1985

Day of Paris: Photographs by André Kertész,
New York: J. J. Augustin, 1945.

9 $\frac{5}{8}$ x 7 $\frac{1}{8}$ x $\frac{1}{2}$ in. (24.4 x 18.1 x 1.3 cm)

103 black and white photographs. Black-stamped beige cloth, no dust jacket.

Estimate \$1,200-1,800



68

ANDRÉ KERTÉSZ 1894-1985

Untitled (Distortion #146); and Untitled (Distortion #142), 1933

Two gelatin silver prints.

(i) 7 x 9 $\frac{3}{8}$ in. (17.8 x 23.8 cm)

(ii) 7 $\frac{1}{8}$ x 6 $\frac{3}{4}$ in. (18.1 x 17.1 cm)

Each numbered in red wax pencil on the recto; each numbered in pencil and '32 bis, Rue du Cotentin, Paris-XV' copyright credit stamp on the verso.

Estimate \$6,000-8,000



69

ANDRÉ KERTÉSZ 1894-1985

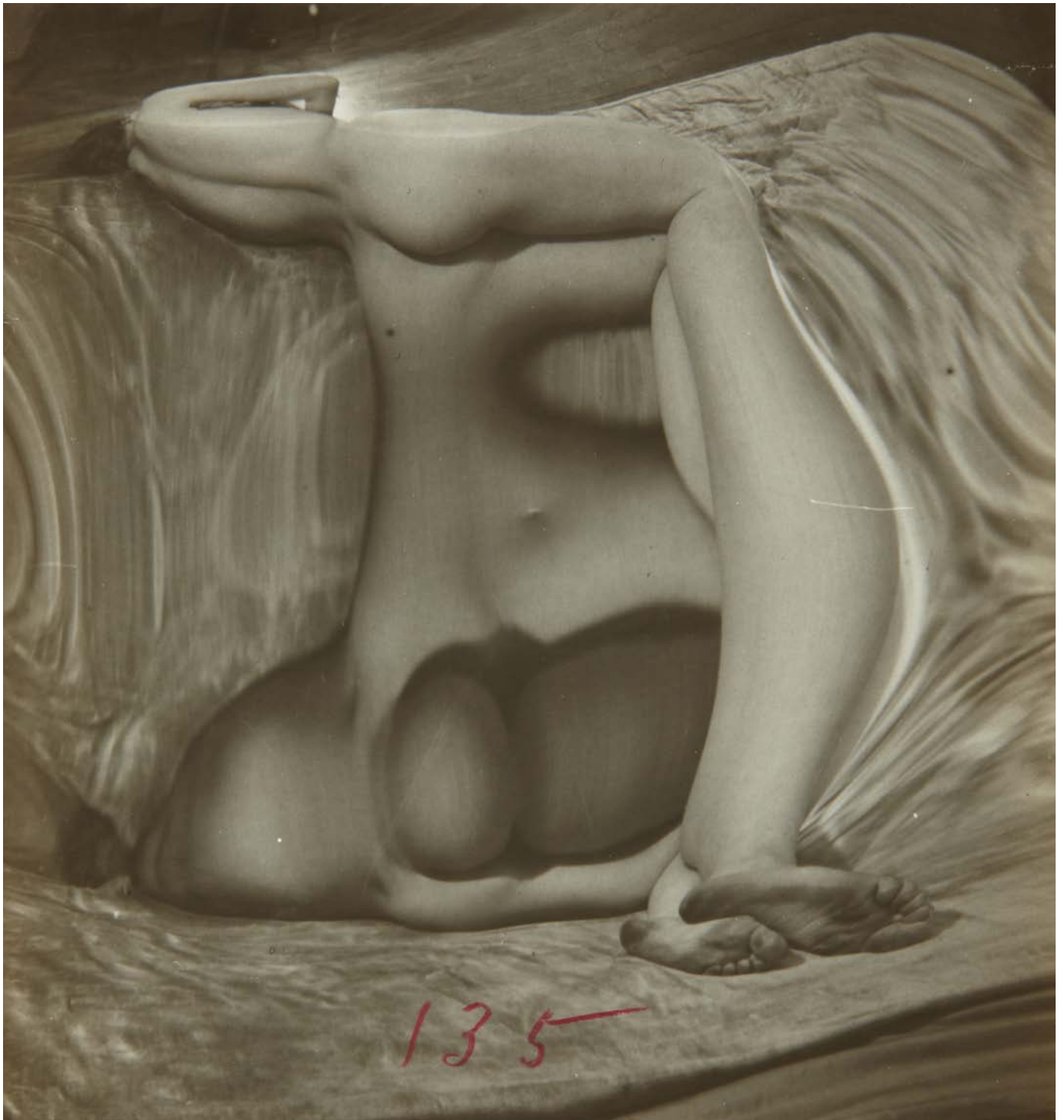
Untitled (Distortion #117), 1933

Gelatin silver print.

9 x 6½ in. (22.9 x 16.5 cm)

Numbered '117' in red wax pencil on the recto; numbered 'No 117' in pencil on the verso and '307 E. 44th St' copyright credit stamp on the verso ('307' crossed out, annotated '67 W.' in pencil).

Estimate \$5,000-7,000



70

ANDRÉ KERTÉSZ 1894-1985

Untitled (Distortion #135), 1933

Gelatin silver print.

8½ x 7 in. (21.6 x 17.8 cm)

Numbered '135' in red wax pencil on the recto; signed and numbered in pencil on the verso.

Estimate \$5,000-7,000



71

ANDRÉ KERTÉSZ 1894-1985

Untitled (Distortion #116), 1933

Gelatin silver print.

7½ x 7 in. (19.1 x 17.8 cm)

Numbered '116' in red wax pencil on the recto; '32 bis, Rue du Contentin, Paris-XV' copyright credit stamp on the verso.

Estimate \$5,000-7,000



72

ANDRÉ KERTÉSZ 1894-1985

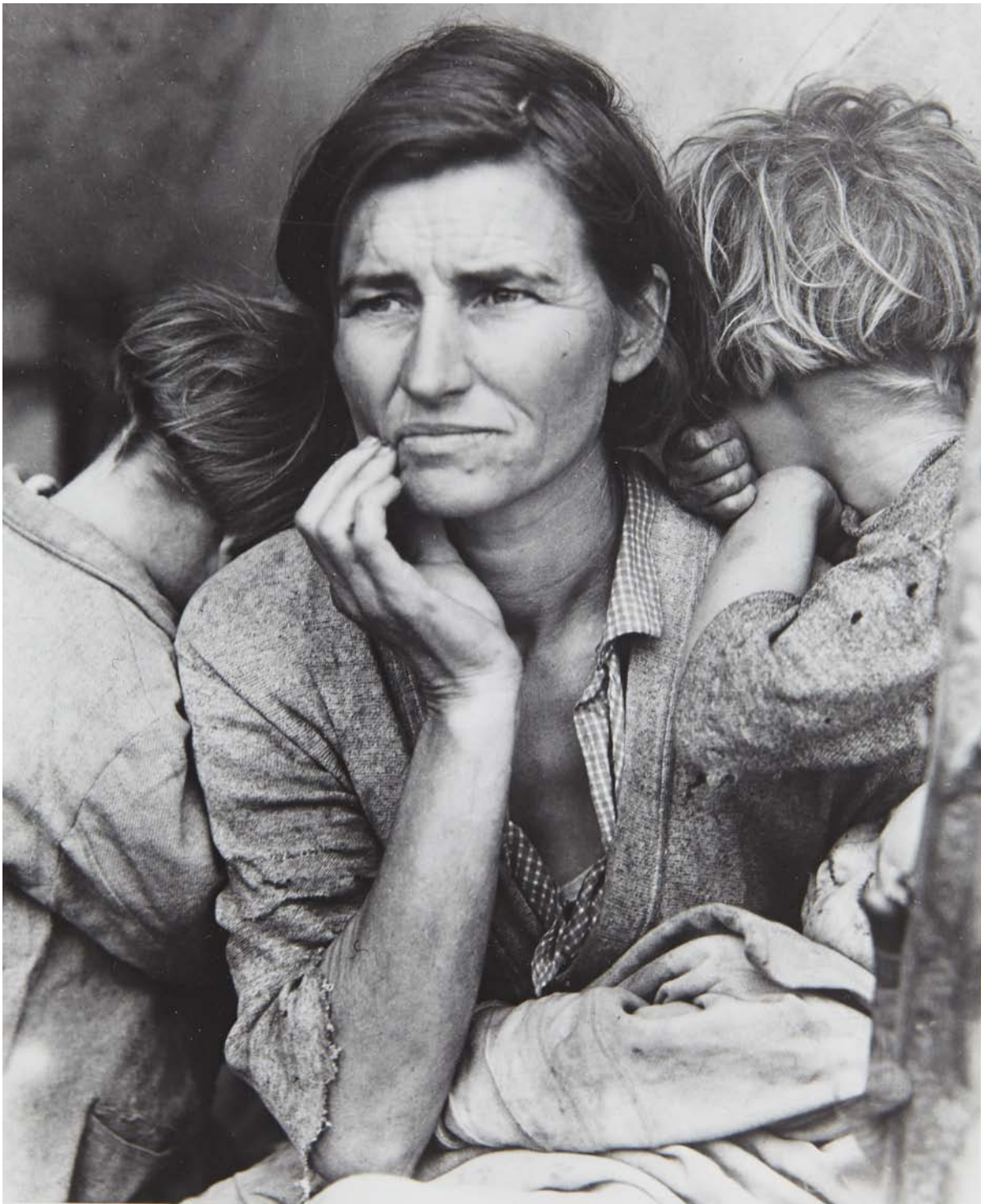
Untitled (Distortion #52), 1933

Gelatin silver print.

4 $\frac{3}{8}$ x 2 $\frac{7}{8}$ in. (11.1 x 7.3 cm)

Initialed and numbered '52' in pencil on the verso.

Estimate \$5,000-7,000



73

PROPERTY FROM THE COLLECTION OF ROBERT A. TAUB,
SOLD TO BENEFIT THE ACQUISITION FUNDS

DOROTHEA LANGE 1895-1965

Migrant Mother, Nipoma, California, 1936

Gelatin silver print, printed 1964.

9 $\frac{3}{8}$ x 7 $\frac{5}{8}$ in. (23.8 x 19.4 cm)

Annotated in an unidentified hand in pencil and Library of Congress
reproduction stamp on the verso.

Estimate \$1,000-2,000



74

CLARENCE JOHN LAUGHLIN 1905-1985

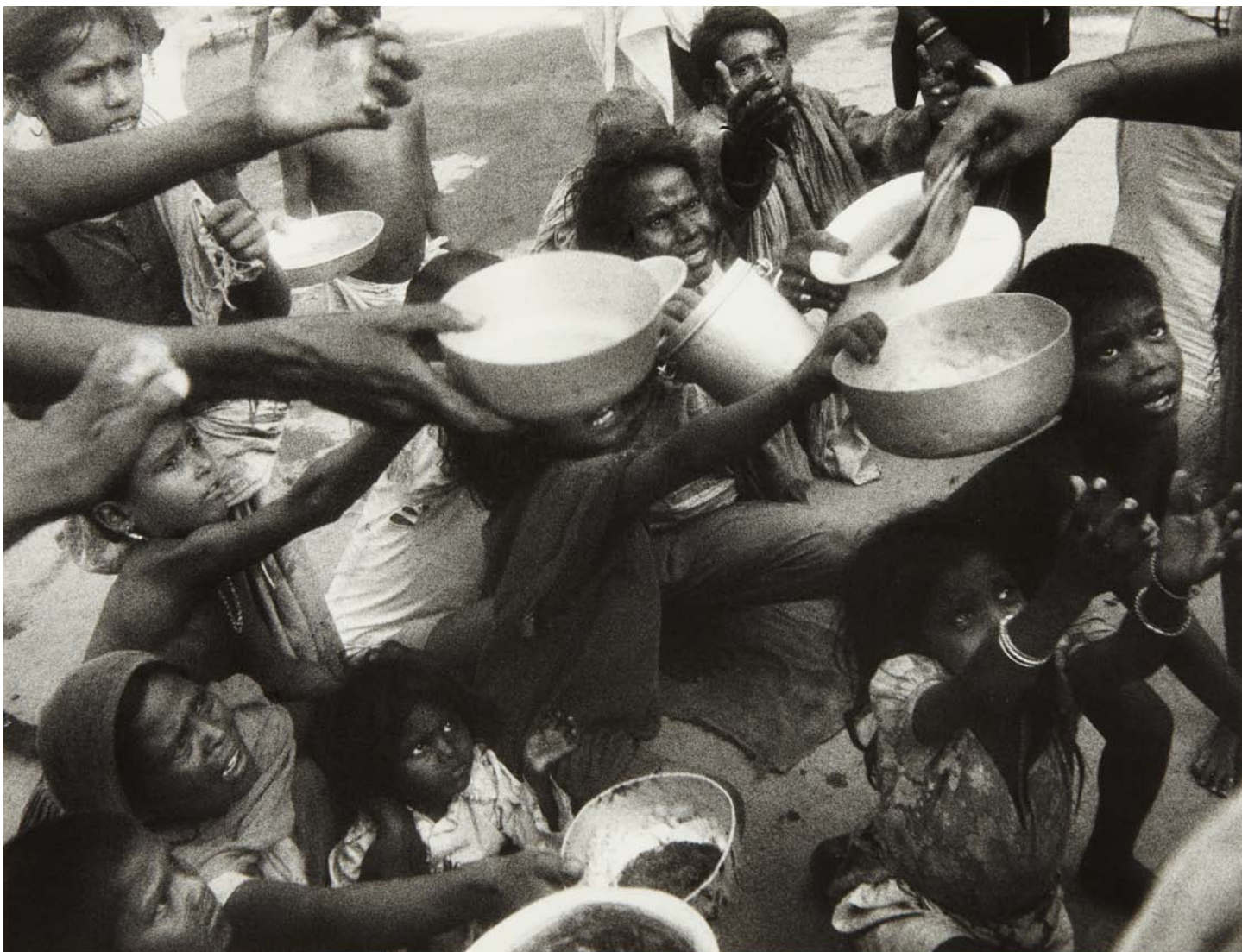
Selected Images, 1941-1953

Six gelatin silver prints.

Varying sizes from 7 $\frac{3}{8}$ x 9 $\frac{3}{8}$ in. (18.7 x 23.8 cm) to 13 $\frac{1}{2}$ x 10 $\frac{5}{8}$ in. (34.3 x 27 cm) or the reverse

Each signed, titled and dated in ink or pencil on the mount; each variously annotated in ink and pencil with credit stamps on reverse of the mount.

Estimate \$5,000-7,000



75

LEON LEVINSTEIN 1913-1988

India, 1979

Gelatin silver print.

12½ x 16⅞ in. (31.8 x 41.6 cm)

Credit stamp on the verso.

Estimate \$1,500-2,500



76

LEON LEVINSTEIN 1913-1988

Mexico, circa 1956

Gelatin silver print, printed later.

13¼ x 10⅝ in. (33.7 x 27 cm)

Credit stamp on the verso.

Estimate \$1,500-2,500



77

LEON LEVINSTEIN 1913-1988

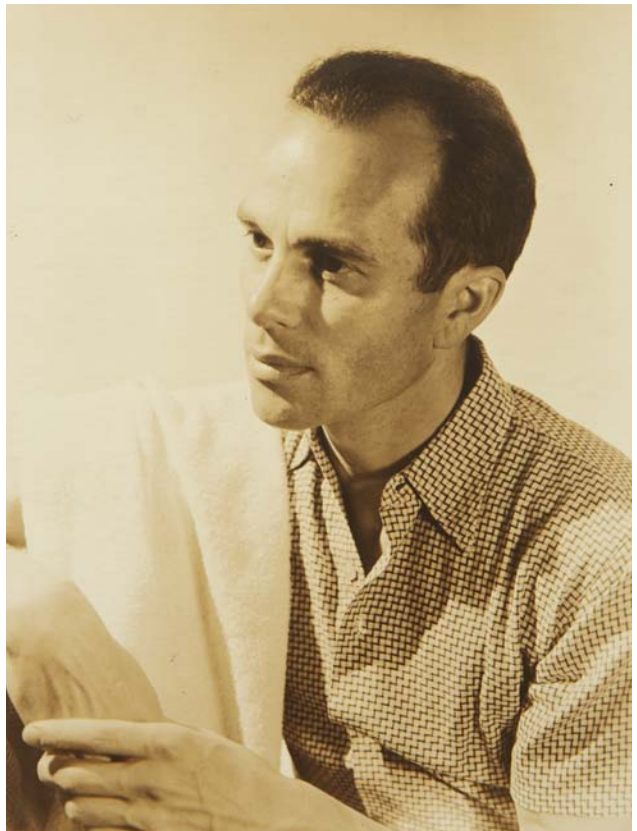
New York, circa 1955

Gelatin silver print, printed later.

10⅞ x 13 in. (25.7 x 33 cm)

Credit stamp on the verso.

Estimate \$1,500-2,500



78

GEORGE PLATT LYNES 1907-1955

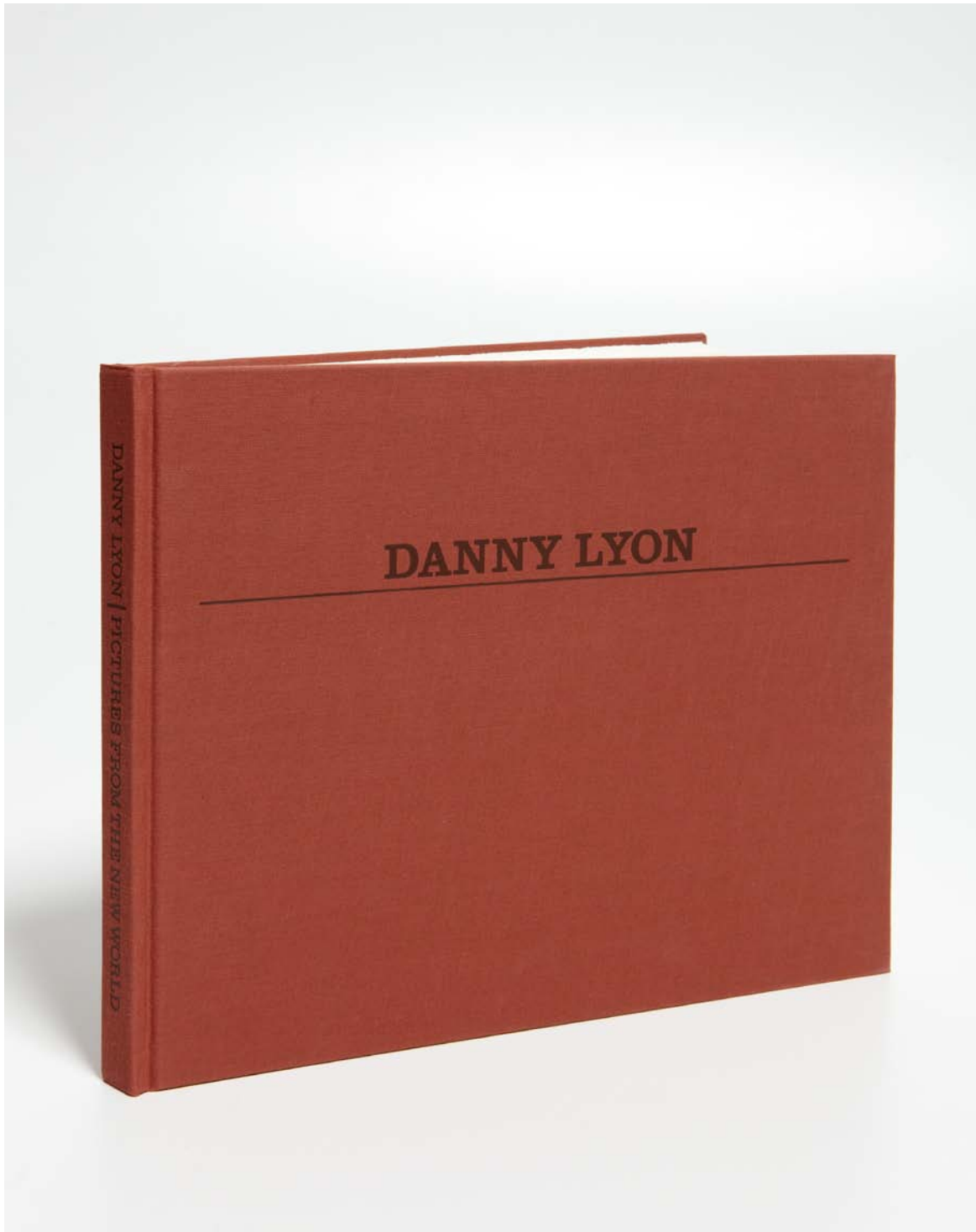
Selected Images, 1928-1950

Three gelatin silver prints.

Varying sizes from 8½ x 6½ (21.6 x 16.5 cm) to 10 x 8 in. (25.4 x 20.3 cm)

Two signed in ink on the mount and credit stamps on the reverse of each mount.

Estimate \$1,000-1,500



79

PROPERTY FROM THE COLLECTION OF ROBERT A. TAUB, SOLD TO BENEFIT
THE ACQUISITION FUNDS

DANNY LYON b. 1942

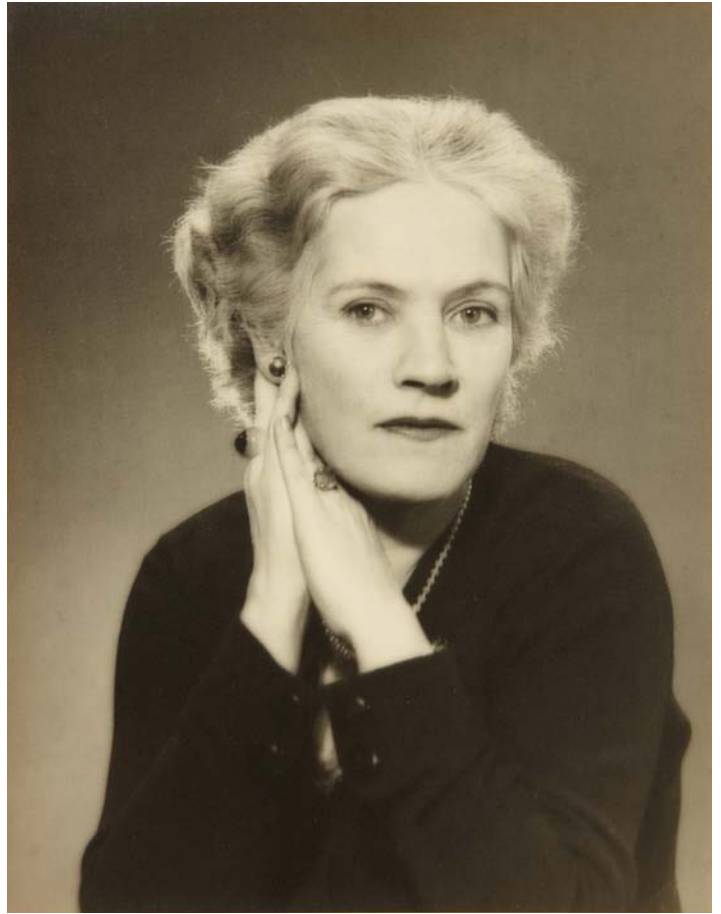
Pictures from the New World: Photographs and Text by Danny Lyon,

New York: Aperture, 1981

9½ x 11½ in. (23.2 x 29.5 cm)

Signed and numbered 319 in ink by the artist on the opening page. 124 black and white and color photographs. Red cloth book with spine and front cover lettered in brown. Enclosed in a red cloth slipcase. One from an edition of 400.

Estimate \$400-600



80

MAN RAY 1890-1976

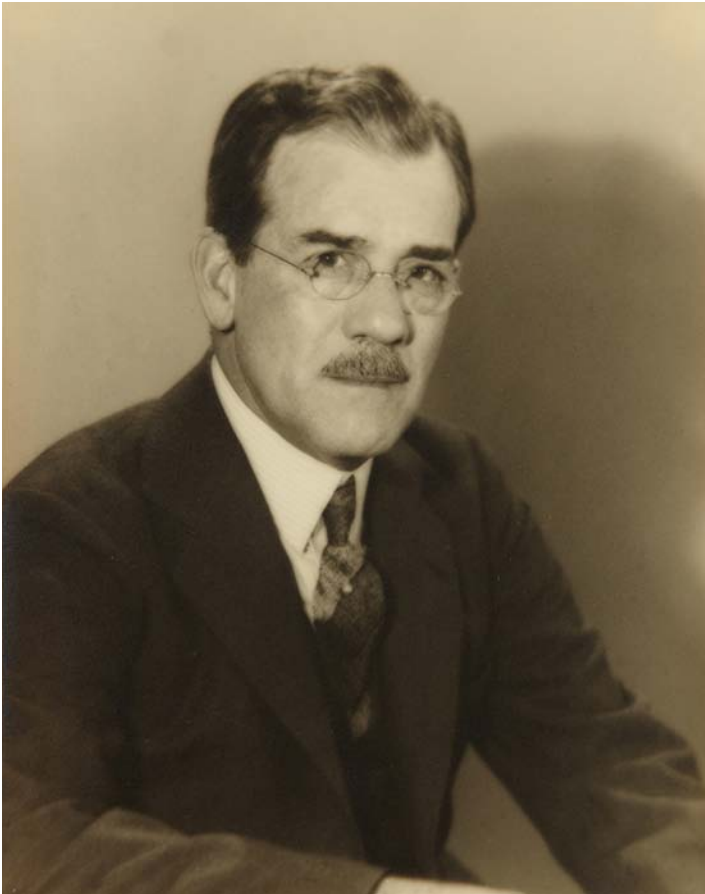
Portrait of Walter S. Brewster, Paris; Portrait of Kate Lancaster Brewster, Paris, 1930

Two gelatin silver prints.

Each approximately 11 $\frac{3}{8}$ x 8 $\frac{7}{8}$ in. (28.9 x 22.5 cm)

Each signed, dated and annotated 'Paris' in pencil on the mount; each with '31 bis, Rue Campagne Premiere Paris XIV' stamps on the verso and the reverse of the mount.

Estimate \$3,000-5,000



81

MAN RAY 1890-1976

Portrait of Walter S. Brewster, Paris; Portrait of Kate Lancaster Brewster, Paris, 1930

Two gelatin silver prints.

Each approximately 11¼ x 8⅞ in. (28.6 x 22.5 cm)

Each signed, dated and annotated 'Paris' in pencil on the mount; each with '31 bis, Rue Campagne Premiere Paris XIV' stamps on the verso and the reverse of the mount.

Estimate \$3,000-5,000



82

RALPH EUGENE MEATYARD 1925-1972

Untitled, n.d.

Gelatin silver print.

7½ x 7¾ in. (19.1 x 19.4 cm)

Signed by Madelyn O. Meatyard in ink on the verso.

Estimate \$2,000-3,000



83

RALPH EUGENE MEATYARD 1925-1972

Untitled, n.d.

Gelatin silver print.

7¾ x 9½ in. (19.7 x 24.4 cm)

Signed by Madelyn O. Meatyard in ink on the verso.

Estimate \$2,000-3,000



84

RALPH EUGENE MEATYARD 1925-1972

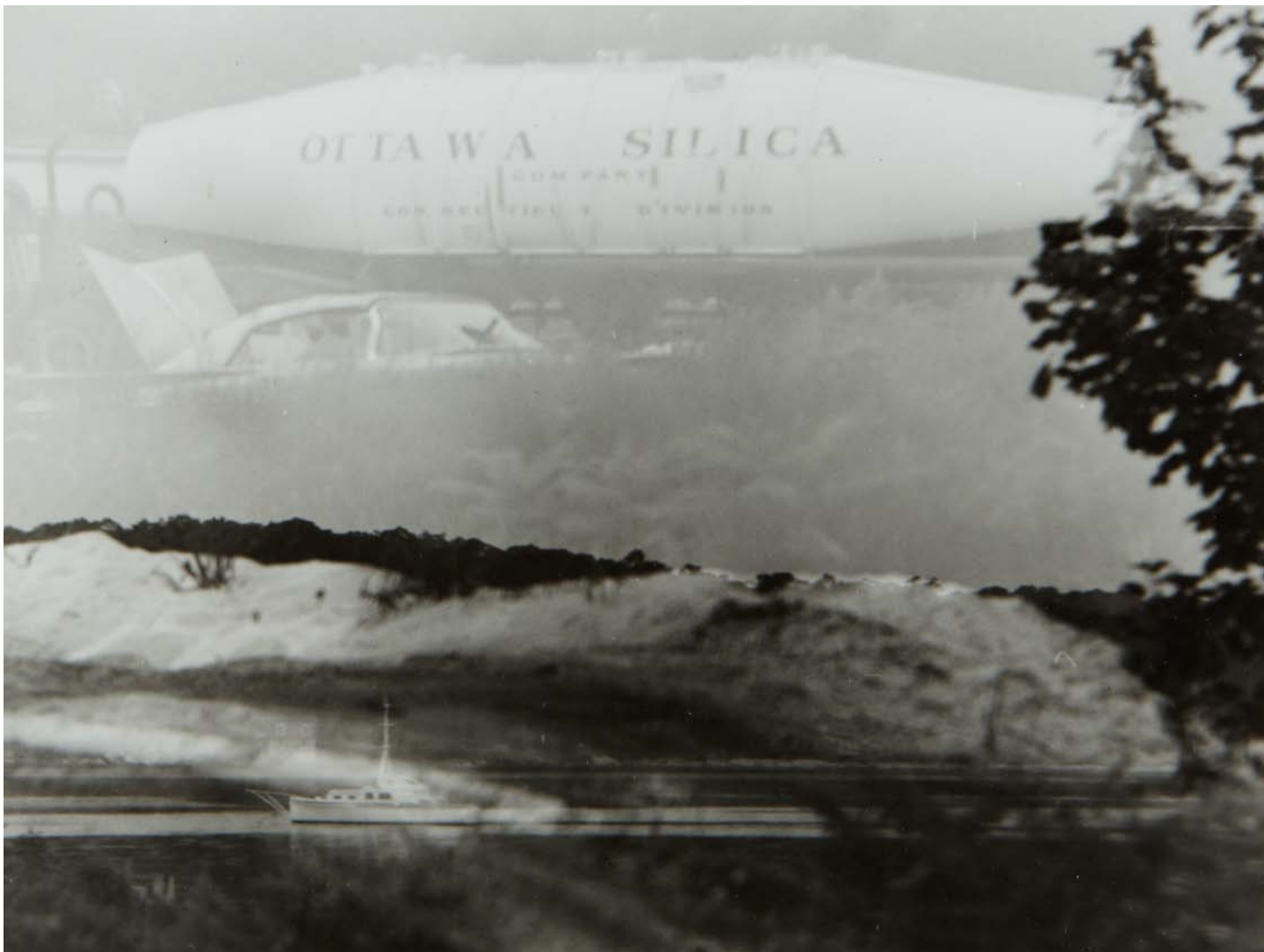
Untitled, n.d.

Gelatin silver print.

7 x 7 in. (17.8 x 17.8 cm)

Signed by Madelyn O. Meatyard in ink on the verso.

Estimate \$2,000-3,000



85

RALPH EUGENE MEATYARD 1925-1972

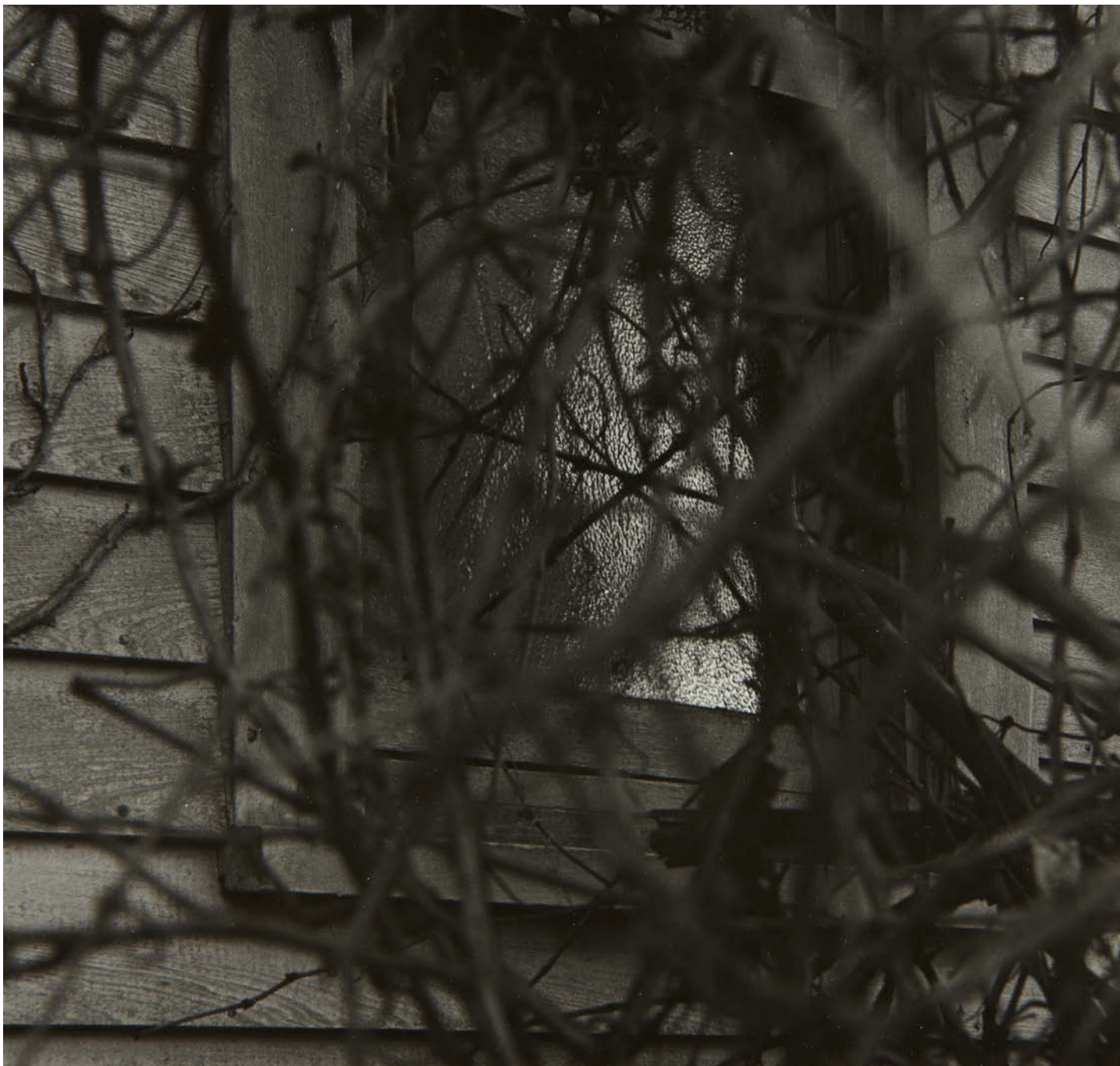
Untitled, 1967

Gelatin silver print.

5 $\frac{5}{8}$ x 7 $\frac{1}{2}$ in. (14.3 x 19.1 cm)

Signed by Madelyn O. Meatyard in ink and dated in an unidentified hand in pencil on the verso.

Estimate \$2,000-3,000



86

RALPH EUGENE MEATYARD 1925-1972

Untitled, n.d.

Gelatin silver print.

7 $\frac{3}{8}$ x 7 $\frac{7}{8}$ in. (18.7 x 20 cm)

Signed by Madelyn O. Meatyard in ink on the verso.

Estimate \$2,000-3,000



87

RALPH EUGENE MEATYARD 1925-1972

Untitled, 1959

Gelatin silver print.

7½ x 7¾ in. (19.1 x 19.4 cm)

Signed by Madelyn O. Meatyard in ink on the verso.

Estimate \$2,500-3,500



88

RALPH EUGENE MEATYARD 1925-1972

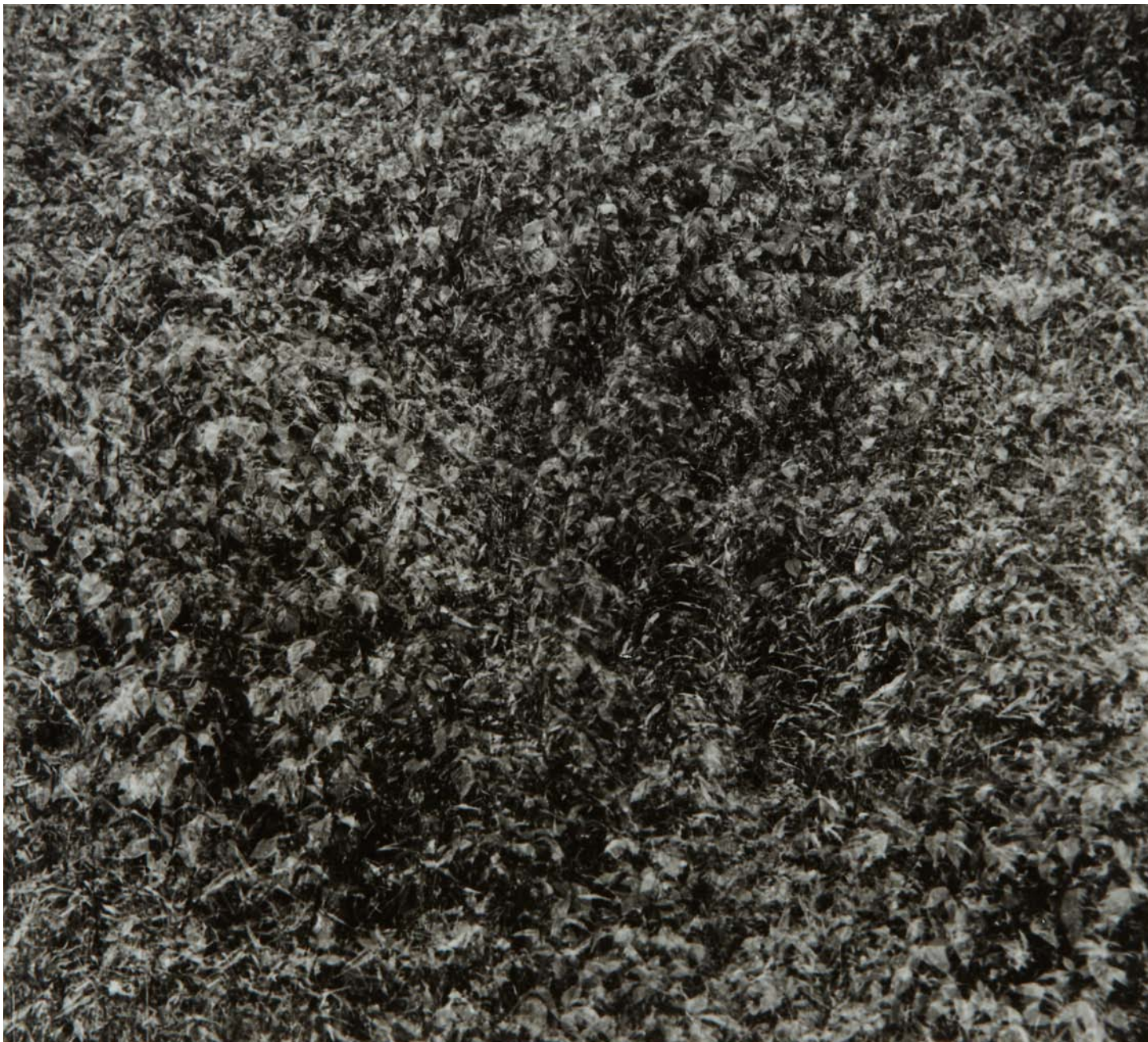
Untitled, n.d.

Gelatin silver print.

6¾ x 6⅞ in. (17.1 x 17.5 cm)

Signed by Madelyn O. Meatyard in ink on the verso.

Estimate \$2,000-3,000



89

RALPH EUGENE MEATYARD 1925-1972

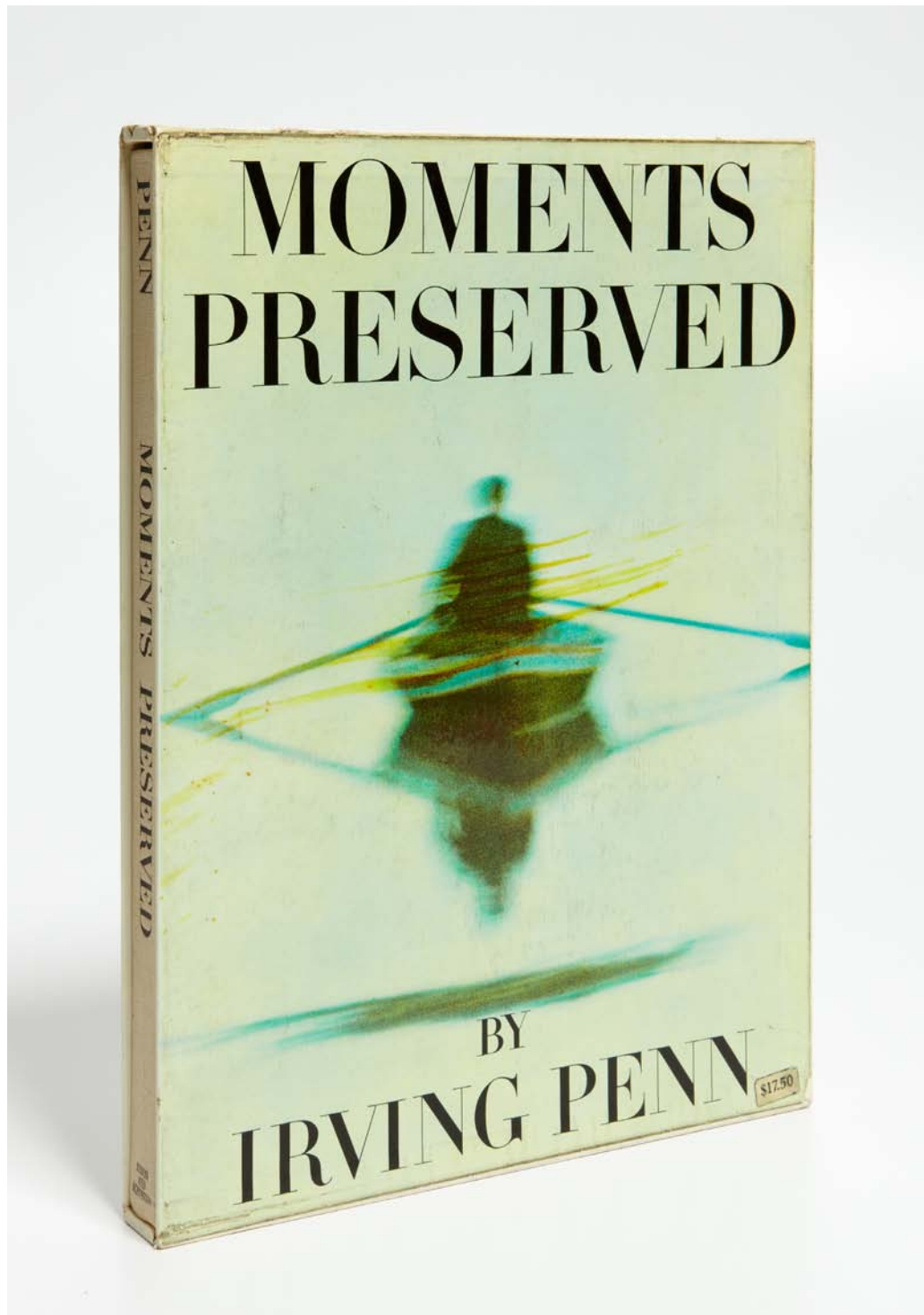
Untitled, n.d.

Gelatin silver print.

6½ x 7⅞ in. (16.5 x 18.1 cm)

Signed by Madelyn O. Meatyard in ink on the verso.

Estimate \$2,000-3,000



90

PROPERTY FROM THE COLLECTION OF ROBERT A. TAUB, SOLD TO
BENEFIT THE ACQUISITION FUNDS

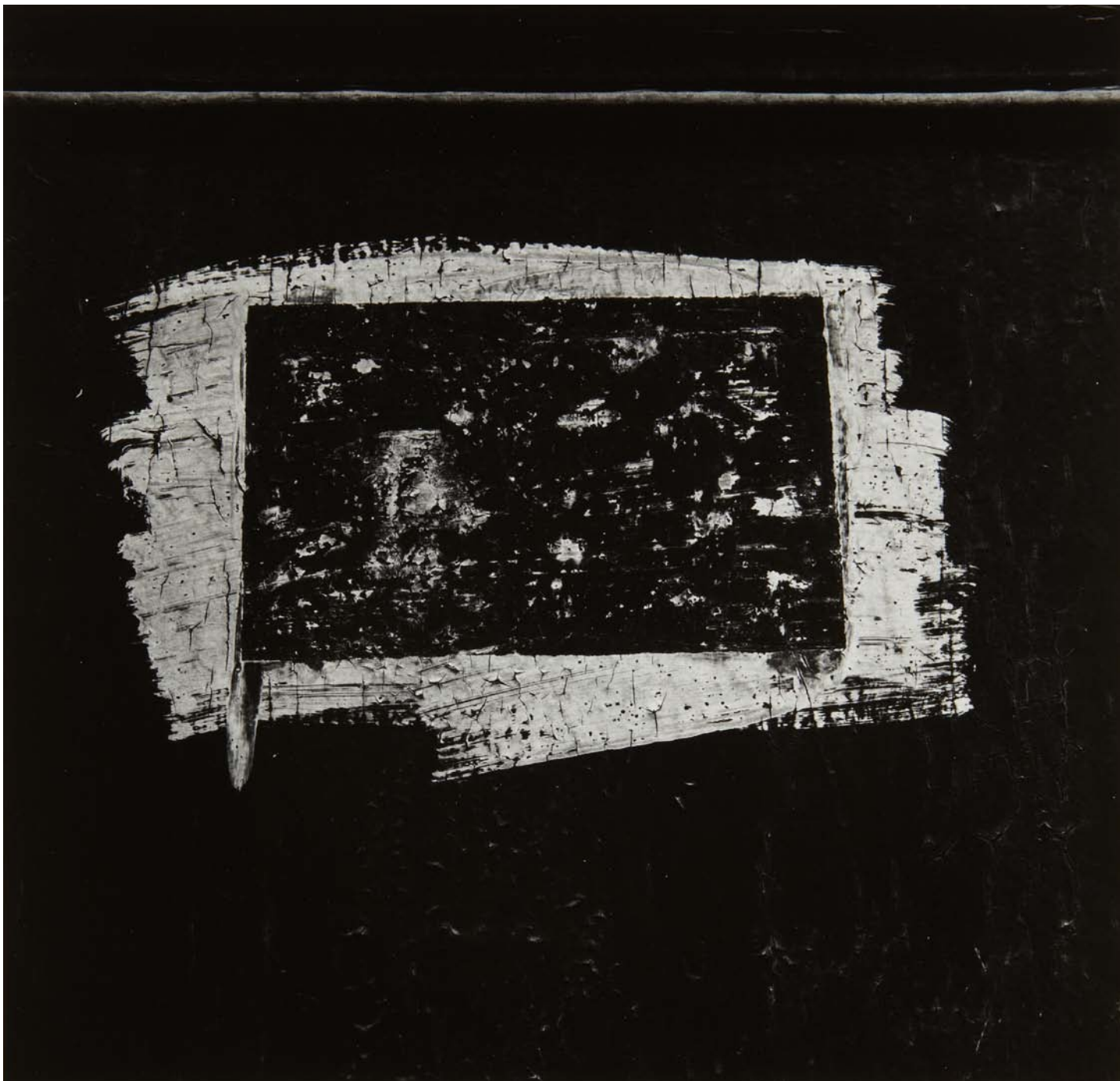
IRVING PENN 1917-2009

Moments Preserved: Eight Essays in Photographs and Words by Irving Penn,
New York: Simon and Schuster, 1960

13 x 9¾ in. (33 x 24.8 cm)

179 black and white and color photographs. Slipcase and beige cloth book
cover with spine lettered in black. Introduction by Alexander Liberman.

Estimate \$200-300



91

AARON SISKIND 1903-1991

Boston 21 (Homage to Franz Kline), 1974

Gelatin silver print.

9¼ x 9½ in. (23.5 x 24.1 cm)

Signed, titled and dated in ink in the margin; annotated 'Bos 21 '74 5' in pencil on the verso.

Estimate \$1,500-2,500



92

AARON SISKIND 1903-1991

Boston 47, 1974

Gelatin silver print.

11 $\frac{1}{8}$ x 10 $\frac{3}{8}$ in. (28.3 x 26.4 cm)

Signed, titled and dated in ink in the margin; annotated 'Boston 47 7/74 4' in pencil on the verso.

Estimate \$1,500-2,500



93

AARON SISKIND 1903-1991

Chicago 11, 1965

Gelatin silver print, printed later.

13 $\frac{3}{8}$ x 10 $\frac{1}{2}$ in. (34 x 26.7 cm)

Signed, titled, dated and annotated 'Ch 11-65 4' in pencil on the verso.

Estimate \$1,500-2,500



94

AARON SISKIND 1903-1991

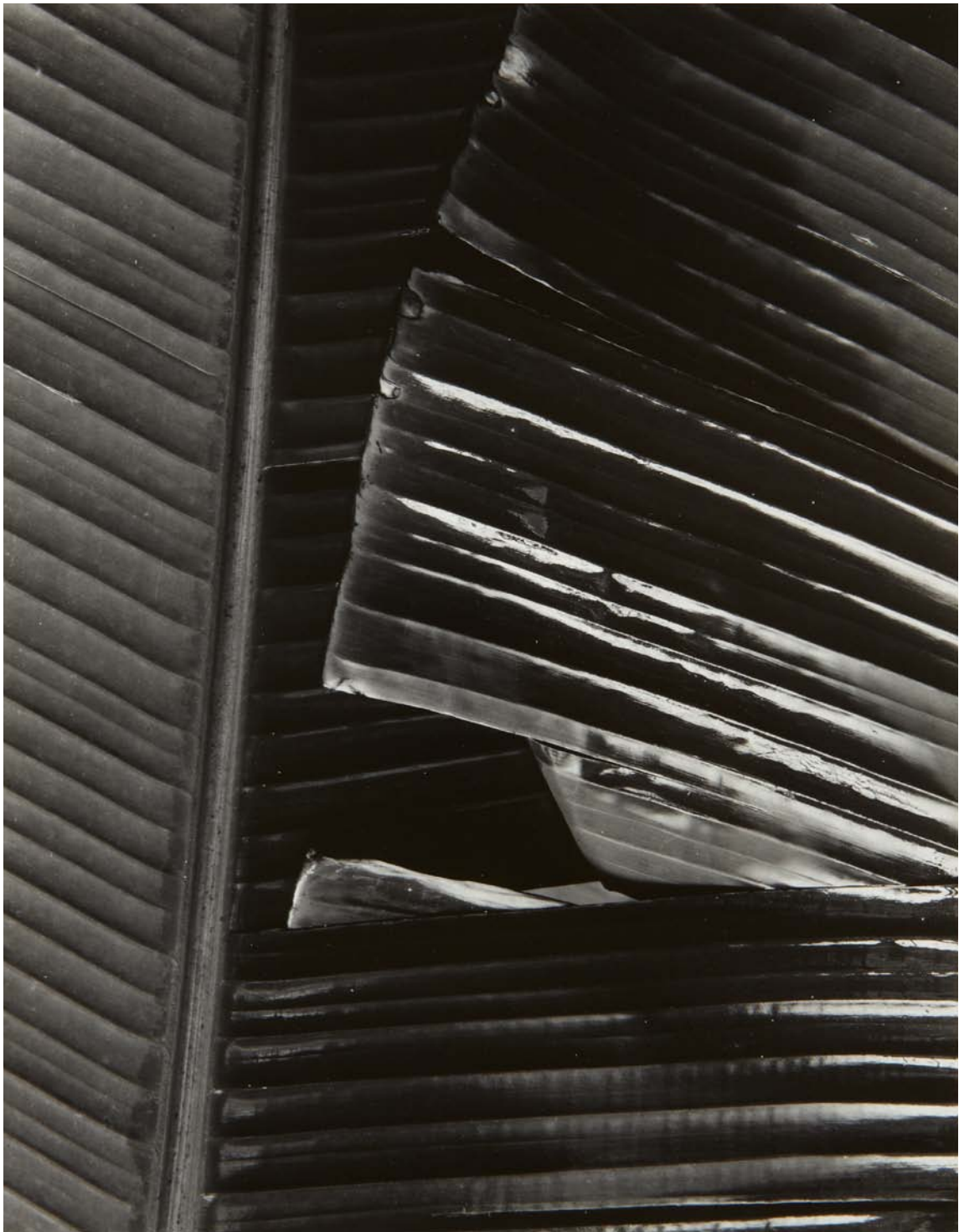
Chicago 11, 1948

Gelatin silver print.

13½ x 9¾ in. (33.3 x 23.8 cm)

Signed, titled, dated and annotated 'Ch 11C-48 M4' in pencil on the verso.

Estimate \$1,500-2,500



95

AARON SISKIND 1903-1991

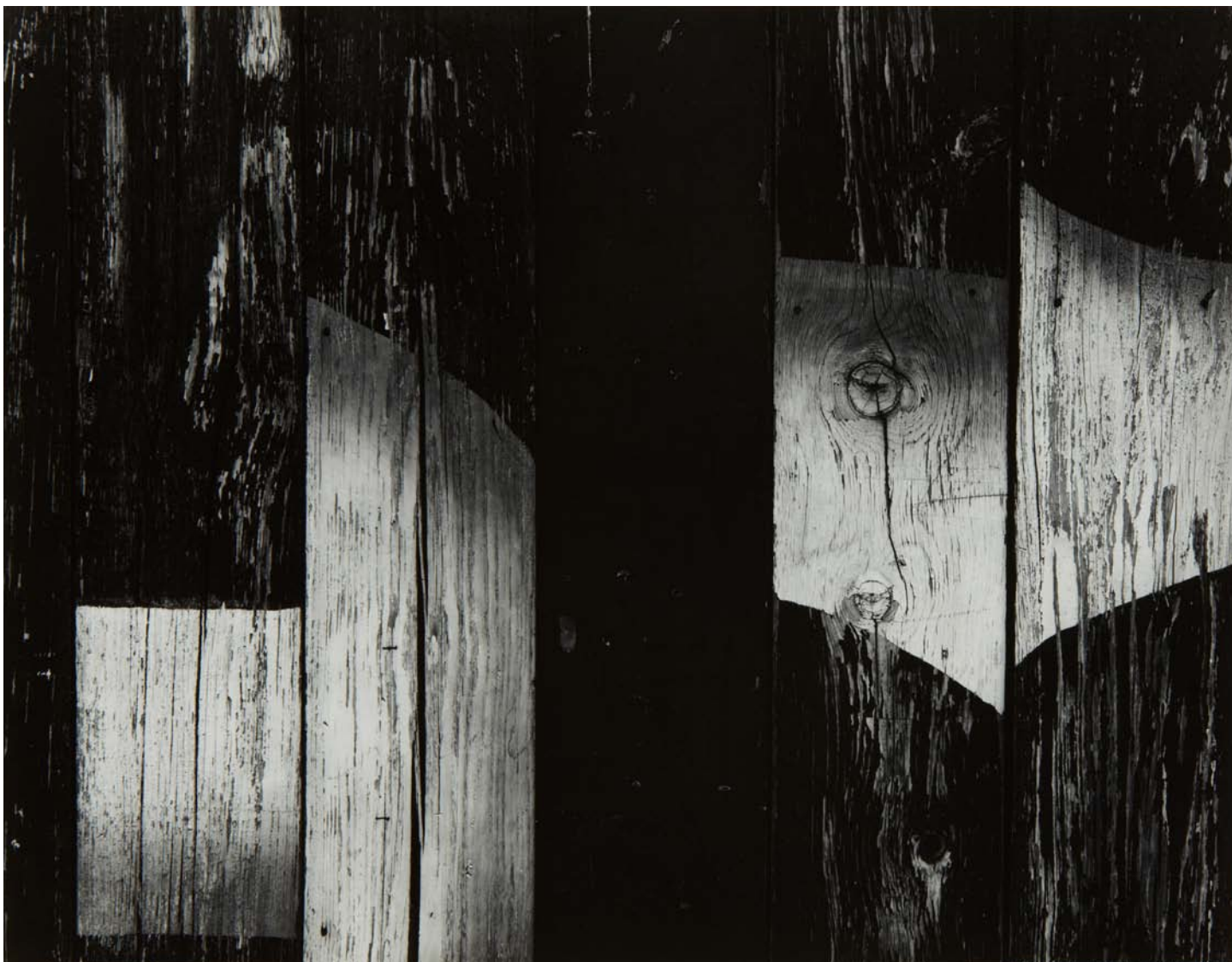
Chicago 11, 1956

Gelatin silver print, printed later.

9¼ x 7¼ in. (23.5 x 18.4 cm)

Signed, titled, dated and annotated 'CH 56-11 6' in pencil on the verso; 'The Art Institute of Chicago' collection label affixed to the reverse of the mat.

Estimate \$1,500-2,500



96

AARON SISKIND 1903-1991

Chicago 13A, 1965

Gelatin silver print.

10 $\frac{1}{8}$ x 13 in. (25.7 x 33 cm)

Signed, titled, dated and annotated 'Ch 13a- '65' '32 R' in pencil on the verso.

Estimate \$1,500-2,500



97

AARON SISKIND 1903-1991

Chicago 231B, 1954

Gelatin silver print.

10 $\frac{1}{8}$ x 12 $\frac{7}{8}$ in. (25.7 x 32.7 cm)

Signed, titled and annotated 'Ch 231B 10/54 M4' in pencil on the verso.

Estimate \$1,500-2,500



98

AARON SISKIND 1903-1991

Chicago 25, 1957

Gelatin silver print.

9¾ x 12¾ in. (24.8 x 32.4 cm)

Signed, titled, dated and annotated 'Ch 25 '57' in pencil on the verso.

Estimate \$1,500-2,500



99

AARON SISKIND 1903-1991

Chicago Facade 21, 1957

Gelatin silver print.

9½ x 7½ in. (24.1 x 19.1 cm)

Signed, titled, dated and annotated 'CF 21 '57 PC3' in pencil on the verso;

'The Art Institute of Chicago' collection label affixed to the reverse of the mat.

Estimate \$1,500-2,500



100

AARON SISKIND 1903-1991

Durango 17, 1961

Gelatin silver print, printed 1975.

9 $\frac{5}{8}$ x 12 in. (24.4 x 30.5 cm)

Signed, titled, dated, annotated 'Dur 17 '61 B4' and '9/75' in pencil on the verso.

Estimate \$1,500-2,500



101

AARON SISKIND 1903-1991

Gloucester, 1944

Gelatin silver print.

7 $\frac{3}{8}$ x 9 $\frac{1}{4}$ in. (18.7 x 23.5 cm)

Signed, titled, dated and annotated '(V)' in pencil on the verso; 'The Art Institute of Chicago' collection label affixed to the reverse of the mount.

Estimate \$1,500-2,500



102

AARON SISKIND 1903-1991

Gloucester 25, 1944

Gelatin silver print, printed later.

8 $\frac{5}{8}$ x 12 $\frac{7}{8}$ in. (21.9 x 32.7 cm)

Signed, titled and dated in pencil on the verso.

Estimate \$1,500-2,500



103

AARON SISKIND 1903-1991

Iron Work, NYC 3, 1947

Gelatin silver print, printed later.

12 $\frac{5}{8}$ x 9 $\frac{5}{8}$ in. (32.1 x 24.4 cm)

Signed, titled and dated in pencil on the verso.

Estimate \$1,500-2,500



104

AARON SISKIND 1903-1991

Lima 25, 1980

Gelatin silver print.

9 $\frac{7}{8}$ x 10 in. (25.1 x 25.4 cm)

Signed, titled, dated and annotated 'L-25 '80 B-3' in pencil on the verso.

Estimate \$1,500-2,500



105

AARON SISKIND 1903-1991

Louise 26, 1974

Gelatin silver print.

10 x 9 $\frac{7}{8}$ in. (25.4 x 25.1 cm)

Signed, titled and dated in ink in the margin; annotated 'L26-74' in pencil on the verso.

Estimate \$1,500-2,500



106

AARON SISKIND 1903-1991

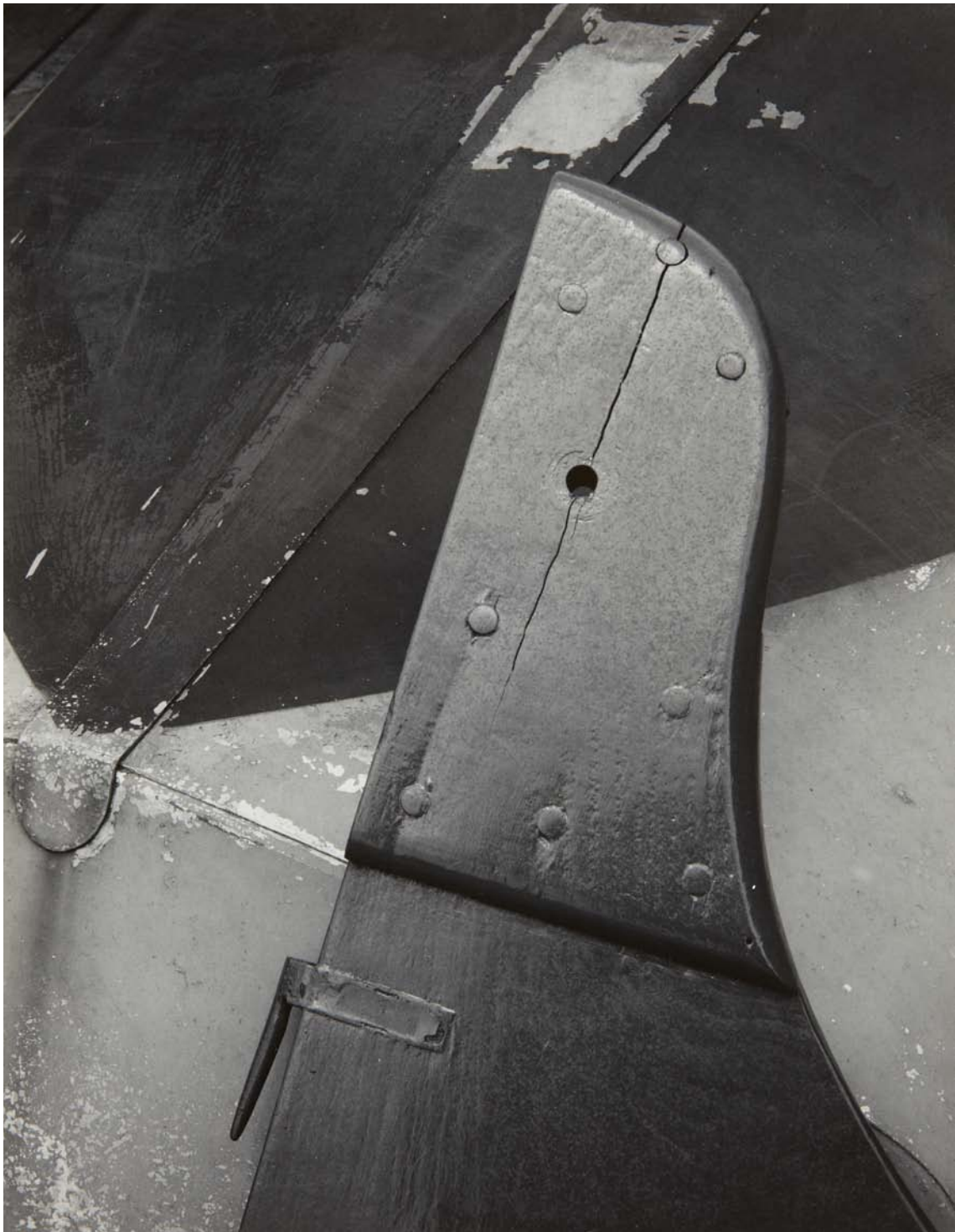
Maine 4, 1949

Gelatin silver print, printed 1957.

13 $\frac{3}{8}$ x 7 $\frac{3}{4}$ in. (34 x 19.7 cm)

Signed, titled, dated and annotated 'M4 '49 K4 1/57' in pencil on the verso.

Estimate \$1,500-2,500



107

AARON SISKIND 1903-1991

Maine 8, 1949

Gelatin silver print, printed 1957.

13³/₈ x 10³/₈ in. (34 x 26.4 cm)

Signed, titled, dated and annotated 'M8 '49 K4 1/57' in pencil on the verso.

Estimate \$1,500-2,500



108

AARON SISKIND 1903-1991

Martha's Vineyard, 1974

Gelatin silver print.

14¾ x 14⅞ in. (37.5 x 37.8 cm)

Signed, titled and dated in ink in the margin; annotated 'MV-7 8/74' in pencil on the verso.

Estimate \$3,000-5,000



109

AARON SISKIND 1903-1991

Martha's Vineyard 7, 1943

Gelatin silver print, printed later.

10 $\frac{5}{8}$ x 13 $\frac{1}{2}$ in. (27 x 34.3 cm)

Signed, titled, dated and annotated 'MV7- '43 K4' in pencil on the verso.

Estimate \$1,500-2,500



110

AARON SISKIND 1903-1991

Martha's Vineyard 76, 1972

Gelatin silver print.

9 $\frac{5}{8}$ x 9 $\frac{3}{4}$ in. (24.4 x 24.8 cm)

Signed, titled and dated in ink in the margin; annotated in pencil on the verso.

Estimate \$1,500-2,500



111

AARON SISKIND 1903-1991

Mexico 75, 1982

Gelatin silver print.

10 x 9¾ in. (25.4 x 24.8 cm)

Signed, titled and dated in ink in the margin; annotated 'Mex 75 '82' in pencil on the verso.

Estimate \$1,500-2,500



112

AARON SISKIND 1903-1991

Morocco 328, 1982

Gelatin silver print.

9 $\frac{7}{8}$ x 9 $\frac{3}{4}$ in. (25.1 x 24.8 cm)

Signed, titled and dated in ink in the margin; annotated 'Mor 328 82 11/2' in pencil on the verso.

Estimate \$1,500-2,500



113

AARON SISKIND 1903-1991

New York 143, 1978

Gelatin silver print.

9½ x 9¾ in. (24.1 x 25.1 cm)

Signed, titled and dated in ink in the margin; annotated 'NY 143 7/78 3' in pencil on the verso.

Estimate \$1,500-2,500



114

AARON SISKIND 1903-1991

Olive Tree, Corfu 33, 1970

Gelatin silver print.

10 $\frac{7}{8}$ in. (27.6 cm)

Signed, titled and dated in ink in the margin; annotated 'OTC 33 70 35' in pencil on the verso.

Estimate \$1,500-2,500



115

AARON SISKIND 1903-1991

Olmec, Villahermosa, Mexico, 1973

Gelatin silver print.

14¾ x 14¾ in. (37.5 x 37.5 cm)

Signed, titled and dated in ink in the margin; annotated 'OV-5 1/73' in pencil on the verso.

Estimate \$3,000-5,000



116

AARON SISKIND 1903-1991

Peru 280, 1977

Gelatin silver print.

9 1/8 x 9 1/8 in. (23.2 x 23.2 cm)

Signed, titled and dated in ink in the margin; annotated 'P280 3/77 5' in pencil on the verso.

Estimate \$1,500-2,500



117

AARON SISKIND 1903-1991

Rome 76, 1963

Gelatin silver print.

12½ x 9½ in. (30.8 x 24.1 cm)

Signed, titled and dated in ink in the margin; annotated 'R76-'63 4' in pencil on the verso.

Estimate \$1,500-2,500



118

AARON SISKIND 1903-1991

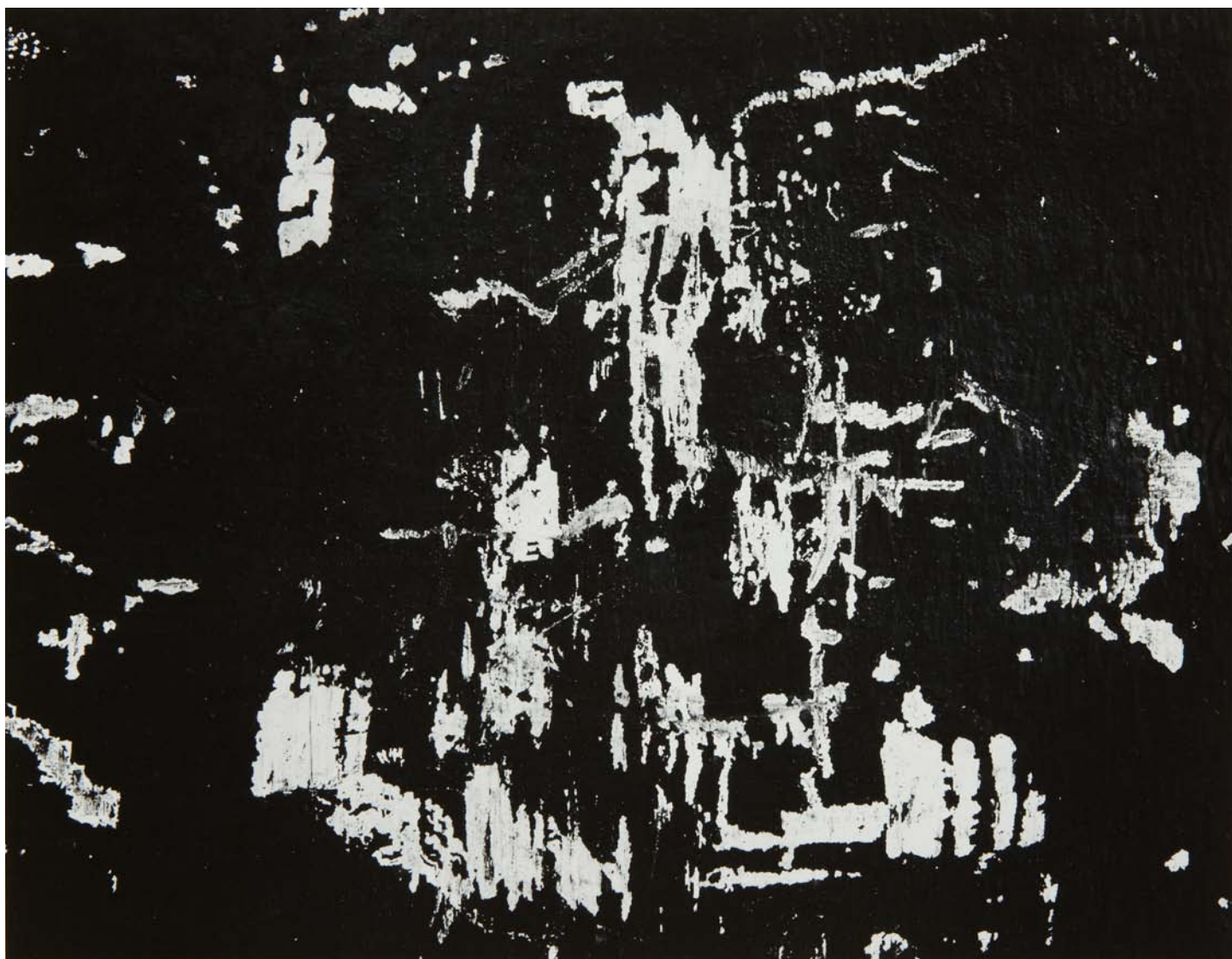
San Luis Potosi 28, 1961

Gelatin silver print, printed later.

7½ x 9½ in. (19.1 x 24.1 cm)

Signed, titled, dated in pencil on the verso; 'The Art Institute of Chicago' collection label affixed to the reverse of the mat.

Estimate \$1,500-2,500



119

AARON SISKIND 1903-1991

South Street 13, 1950

Gelatin silver print, printed 1957.

10 $\frac{1}{8}$ x 13 $\frac{1}{8}$ in. (25.7 x 33.3 cm)

Signed, titled, dated and annotated 'South St. 13 '50 H4 2/57' in pencil on the verso.

Estimate \$1,500-2,500



120

AARON SISKIND 1903-1991

Terracotta 13, 1960

Gelatin silver print, printed later.

19 $\frac{3}{8}$ x 15 $\frac{1}{2}$ in. (49.2 x 39.4 cm)

Signed, titled, dated and annotated 'Ter 13-60' in pencil on the verso.

Estimate \$1,500-2,500



121

AARON SISKIND 1903-1991

Terracotta 19, 1960

Gelatin silver print.

13 x 10 $\frac{1}{8}$ in. (33 x 25.7 cm)

Signed, titled, dated and annotated 'Te 60-19' in pencil on the verso.

Estimate \$1,500-2,500



122

AARON SISKIND 1903-1991

Terracotta 6, 1961

Gelatin silver print.

7½ x 9¾ in. (19.1 x 23.8 cm)

Signed, titled, dated and annotated 'Ter 61-6 3' in pencil on the verso;
'The Art Institute of Chicago' collection label affixed to the reverse of
the mount.

Estimate \$1,500-2,500



123

AARON SISKIND 1903-1991

The Tree 108, 1972

Gelatin silver print.

9½ x 9¾ in. (24.1 x 24.4 cm)

Titled and dated in ink in the margin; signed, titled, dated and annotated
'T 108 8/72' in pencil on the verso.

Estimate \$1,500-2,500



124

AARON SISKIND 1903-1991

The Tree, Martha's Vineyard 15, 1973

Gelatin silver print.

9½ x 9¾ in. (24.1 x 24.4 cm)

Signed, titled and dated in ink in the margin; annotated 'MV (Tree) 15-'73' in pencil on the verso.

Estimate \$1,500-2,500



125

AARON SISKIND 1903-1991

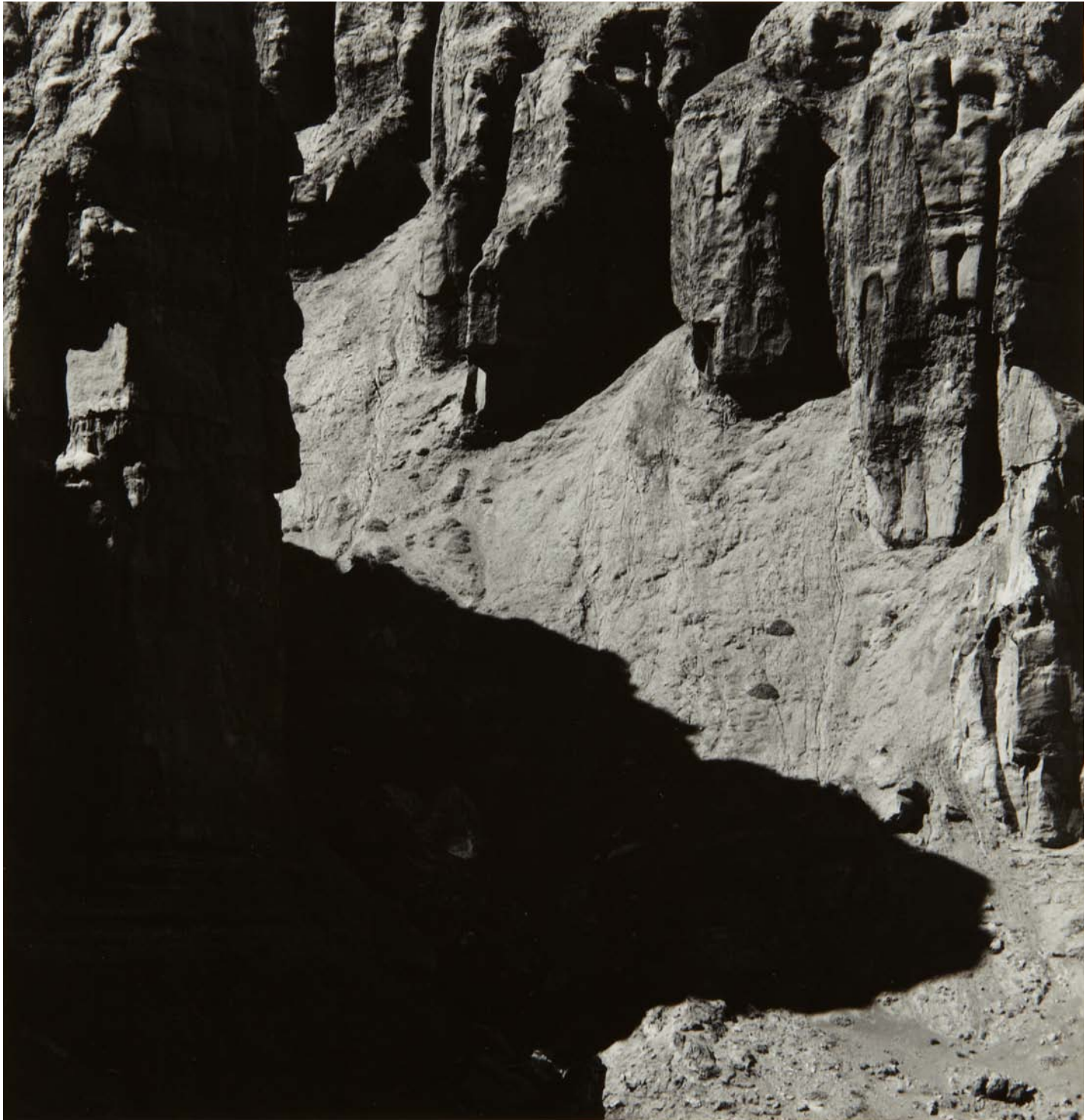
Utah 24, 1976

Gelatin silver print.

10 x 9 $\frac{5}{8}$ in. (25.4 x 24.4 cm)

Signed, titled and dated in ink in the margin.

Estimate \$1,500-2,500



126

AARON SISKIND 1903-1991

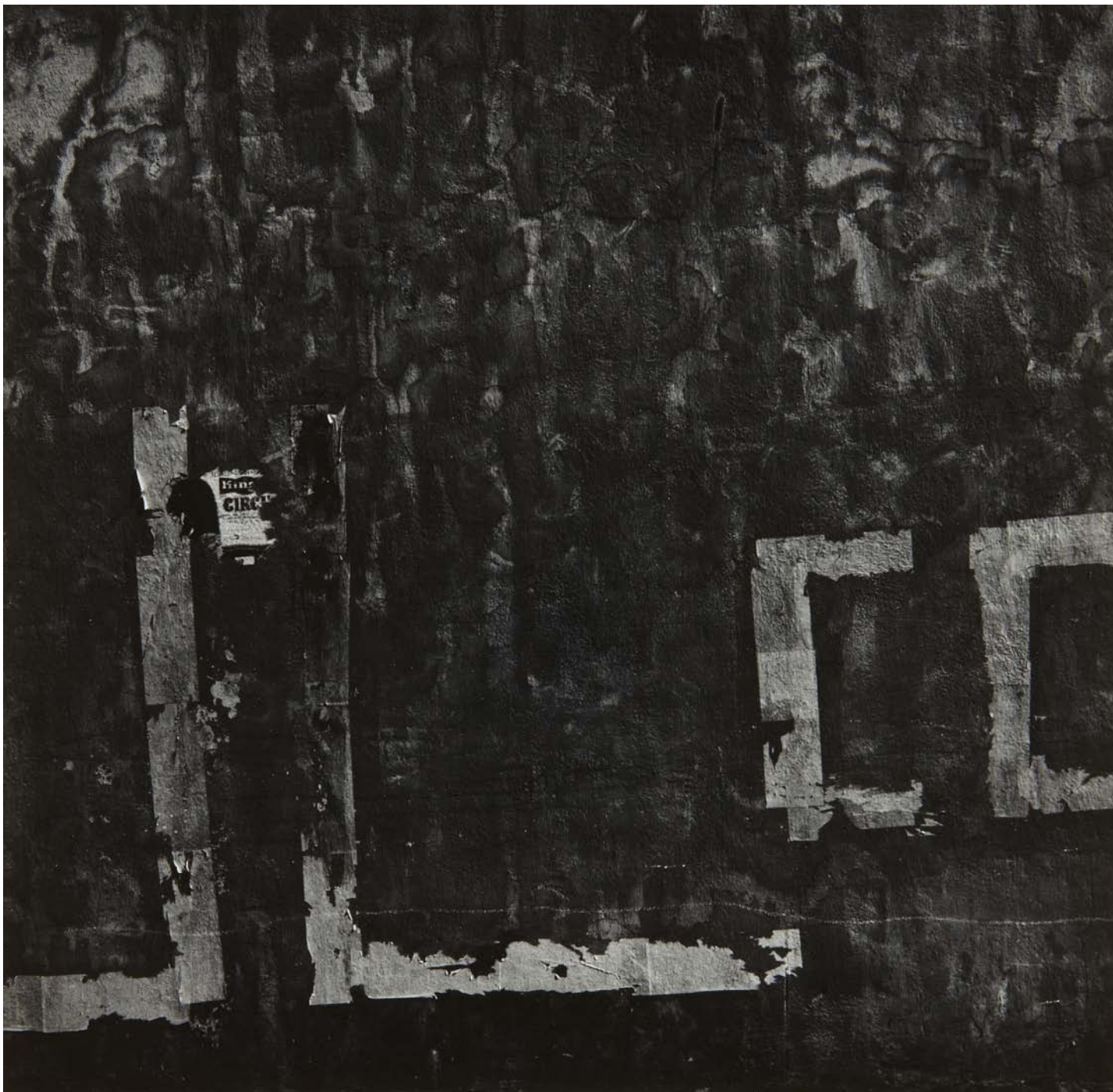
Utah 32, 1976

Gelatin silver print.

10 x 9 $\frac{5}{8}$ in. (25.4 x 24.4 cm)

Signed, titled 'U32 Utah' and dated in ink in the margin; annotated 'U32 3/76 3' in pencil on the verso.

Estimate \$1,500-2,500



127

AARON SISKIND 1903-1991

Veracruz 130, 1973

Gelatin silver print.

9¾ x 9½ in. (23.8 x 24.1 cm)

Signed, titled and dated in ink in the margin; annotated 'VC 130-'73 5' in pencil on the verso.

Estimate \$1,500-2,500



128

W. EUGENE SMITH 1918-1978

Selected Images, 1951

Two gelatin silver prints, one printed later.

(i) 9¼ x 13¾ in. (23.5 x 34 cm)

(ii) 10¾ x 13¼ in. (26.4 x 33.7 cm)

Each with Estate credit stamp; one with reproduction limitation credit stamp on the verso.

Estimate \$7,000-9,000



129

W. EUGENE SMITH 1918-1978

Untitled from A Man of Mercy: Albert Schweitzer, 1954

Gelatin silver print.

8 $\frac{5}{8}$ x 13 $\frac{5}{8}$ in. (21.9 x 34.6 cm)

Estate credit stamp on the verso.

Estimate \$2,500-3,500



130

W. EUGENE SMITH 1918-1978

Untitled, n.d.

Gelatin silver print.

8 x 11¼ in. (20.3 x 29.8 cm)

Estate credit stamp on the verso.

Estimate \$3,000-5,000



131

ELSE THALEMANN 1901-1984

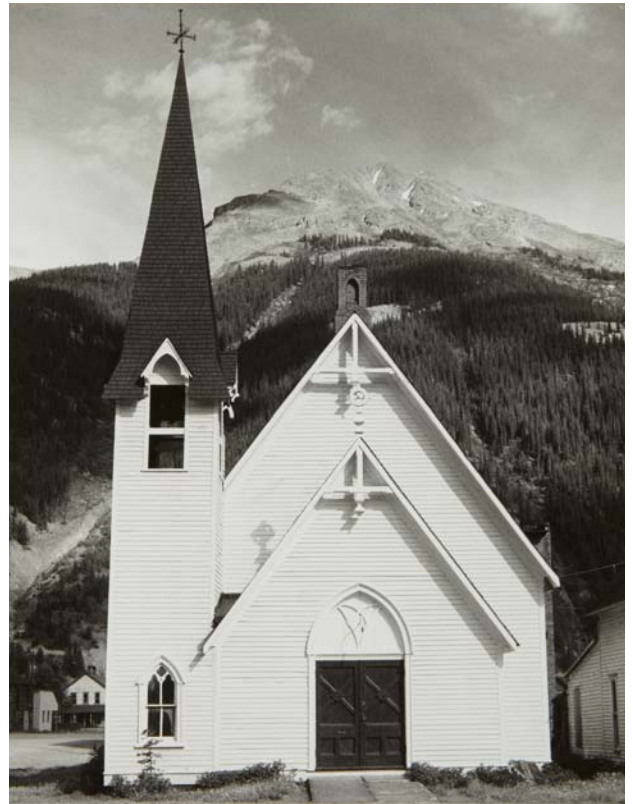
Eiffelturm, Paris, No. 31456 (Eiffel Tower, Paris), circa 1930

Gelatin silver print, possibly printed 1950s.

6 $\frac{7}{8}$ x 4 $\frac{7}{8}$ in. (17.5 x 12.4 cm)

Label with printed credit and title affixed to the verso.

Estimate \$1,000-1,500



132

TODD WEBB 1905-2000

Selected Images, 1950s-1960s

Twelve gelatin silver prints.

Varying sizes from 10 $\frac{3}{8}$ x 4 in. (26.4 x 10.2 cm) to 13 $\frac{3}{8}$ x 10 $\frac{1}{8}$ in. (34 x 25.7 cm) or the reverse, one 20 x 16 in. (50.8 x 40.6 cm)

One signed, titled, dated in ink and credit stamp on the reverse of the mount; each signed, titled and annotated in an unidentified hand in pencil and 'The Art Institute of Chicago' collection label affixed to the reverse of the mount.

Estimate \$7,000-9,000



133

EDWARD WESTON 1886-1958

7 a.m. Pacific War Time, 1945

Gelatin silver print from *The Photographs of Edward Weston*, printed circa 1953 by Brett Weston.

7½ x 9½ in. (19.1 x 24.1 cm)

Initialed and dated in pencil on the mount; printed title, date and negative number on 'The Photographs of Edward Weston' label affixed to the reverse of the mount; 'The Art Institute of Chicago' collection label affixed to the reverse of the mount. One from an edition of 6.

Estimate \$3,000-5,000



134

EDWARD WESTON 1886-1958

Boats, San Francisco, 1925

Gelatin silver print from *The Photographs of Edward Weston*, printed circa 1953 by Brett Weston.

9½ x 7½ in. (24.1 x 19.1 cm)

Initialed and dated in pencil on the mount; printed title, date and negative number on 'The Photographs of Edward Weston' label affixed to the reverse of the mount; 'The Art Institute of Chicago' collection label affixed to the reverse of the mount. One from an edition of 6.

Estimate \$4,000-6,000



135

EDWARD WESTON 1886-1958

David H. McAlpine, New York, 1941

Gelatin silver print from *50th Anniversary Portfolio*, printed 1952 by Brett Weston.

9⅞ x 7¼ in. (23.2 x 18.4 cm)

Initialed and dated in pencil on the mount.

Estimate \$1,500-2,500



136

EDWARD WESTON 1886-1958

Eel River Ranch, 1937

Gelatin silver print from *The Photographs of Edward Weston*, printed circa 1953 by Brett Weston.

7½ x 9¾ in. (19.1 x 23.8 cm)

Initialed and dated in pencil on the mount; printed title, date and negative number on 'The Photographs of Edward Weston' label affixed to the reverse of the mount. One from an edition of 6.

Estimate \$3,000-5,000



137

EDWARD WESTON 1886-1958

Fence, Old Road, Big Sur, 1935

Gelatin silver print from *The Photographs of Edward Weston*, printed circa 1953 by Brett Weston.

7½ x 9¼ in. (19.1 x 23.5 cm)

Initialed and dated in pencil on the mount; printed title, date and negative number on 'The Photographs of Edward Weston' label affixed to the reverse of the mount. One from an edition of 6.

Estimate \$3,000-5,000



138

EDWARD WESTON 1886-1958

Fort Ross, 1937

Gelatin silver print from *The Photographs of Edward Weston*, printed circa 1953 by Brett Weston.

7 $\frac{3}{8}$ x 9 $\frac{3}{8}$ in. (18.7 x 23.8 cm)

Initialed and dated in pencil on the mount; printed title, date and negative number on 'The Photographs of Edward Weston' label affixed to the reverse of the mount. One from an edition of 6.

Estimate \$3,000-5,000



139

EDWARD WESTON 1886-1958

Snow, Yosemite, 1938

Gelatin silver print from *The Photographs of Edward Weston*, printed circa 1953 by Brett Weston.

7½ x 9¾ in. (19.1 x 23.8 cm)

Initialed and dated in pencil on the mount; printed title, date and negative number on 'The Photographs of Edward Weston' label affixed to the reverse of the mount. One from an edition of 6.

Estimate \$3,000-5,000



140

EDWARD WESTON 1886-1958

Manly Beacon from Golden Canyon, Death Valley, 1938

Gelatin silver print from *The Photographs of Edward Weston*, printed circa 1953 by Brett Weston.

7½ x 9½ in. (19.1 x 24.1 cm)

Initialed and dated in pencil; printed title, date and negative number on 'The Photographs of Edward Weston' label affixed to the reverse of the mount. One from an edition of 6.

Estimate \$3,000-5,000



141

EDWARD WESTON 1886-1958

Nude on Navajo, 1945

Gelatin silver print from *The Photographs of Edward Weston*, printed circa 1953 by Brett Weston.

7½ x 9½ in. (19.1 x 24.1 cm)

Initialed and dated in pencil on the mount; printed title, date and negative number on 'The Photographs of Edward Weston' label affixed to the reverse of the mount. One from an edition of 6.

Estimate \$3,000-5,000



142

EDWARD WESTON 1886-1958

Pond, Meyer's Ranch, Yosemite, 1938

Gelatin silver print from *The Photographs of Edward Weston*, printed circa 1953 by Brett Weston.

7½ x 9½ in. (19.1 x 24.1 cm)

Initialed and dated in pencil on the mount; printed title, date and negative number on 'The Photographs of Edward Weston' label affixed to the reverse of the mount. One from an edition of 6.

Estimate \$3,000-5,000



143

EDWARD WESTON 1886-1958

San Simeon Highway, 1940

Gelatin silver print from *The Photographs of Edward Weston*, printed circa 1953 by Brett Weston.

7 $\frac{5}{8}$ x 9 $\frac{3}{8}$ in. (19.4 x 23.8 cm)

Initialed and dated in pencil on the mount; printed titled, date and negative number on 'The Photographs of Edward Weston' label affixed to the reverse of the mount. One from an edition of 6.

Estimate \$3,000-5,000



144

EDWARD WESTON 1886-1958

Trees, Lake Tenaya, 1937

Gelatin silver print from *The Photographs of Edward Weston*, printed circa 1953 by Brett Weston.

9¼ x 7¾ in. (23.5 x 18.7 cm)

Initialed and dated in pencil on the mount; printed title, date and negative number on 'The Photographs of Edward Weston' label affixed to the reverse of the mount. One from an edition of 6.

Estimate \$3,000-5,000



145

EDWARD WESTON 1886-1958

Arizona Nymph, 1938

Gelatin silver print, printed later by Cole Weston.

7 $\frac{3}{8}$ x 9 $\frac{1}{4}$ in. (18.7 x 23.5 cm)

Signed, titled, dated in pencil by Cole Weston and Edward Weston
signature stamp on the reverse of the mount.

Estimate \$1,500-2,500



146

PROPERTY FROM THE COLLECTION OF ROBERT A. TAUB, SOLD TO
BENEFIT THE ACQUISITION FUNDS

GARRY WINOGRAND 1928-1984

Untitled from Women Are Beautiful, 1961

Gelatin silver print, printed no later than 1975.

8 $\frac{3}{8}$ x 12 $\frac{3}{4}$ in. (21.3 x 32.4 cm)

Signed in pencil in the margin; signed in pencil on the verso.

Estimate \$2,000-3,000

SALE INFORMATION

PHOTOGRAPHS FROM THE COLLECTION OF
THE ART INSTITUTE OF CHICAGO

AUCTION

Online Bidding from 8–22 December 2014

Buy Now from 8–15 December 2014

VIEWING & LOCATION

This sale is exclusively online-only and will not be accompanied by a live auction.

SALE DESIGNATION

In making enquiries please refer to this sale as NY040414 or PHOTOGRAPHS FROM THE COLLECTION OF THE ART INSTITUTE OF CHICAGO.

PHOTOGRAPHS DEPARTMENT

SENIOR DIRECTOR AND WORLDWIDE HEAD

Vanessa Kramer Hallett +1 212 940 1243

HEAD OF SALE

Caroline Deck +1 212 940 1247

SPECIALISTS

Shlomi Rabi +1 212 940 1246

Sarah Kruger +1 212 940 1225

Carol Ehlers +1 212 940 1245

ADMINISTRATOR

Kelly Van Ingen +1 212 940 1245

BIDS

tel +1 212 940 1228 fax +1 212 924 1749

bidsnewyork@phillips.com

CLIENT ACCOUNTING

Sylvia Leitao +1 212 940 1231

Buyer Accounts

Joseph Blanks +1 212 940 1371

CLIENT SERVICES

450 Park Avenue +1 212 940 1200

SHIPPING

Steve Orridge +1 212 940 1370

Shannon Barnes +1 212 940 1373

IMPORTANT NOTE TO BUYERS

This index is provided as a convenience to our clients and is not a catalogue for the December 2014 online-only sale for Photographs from the Collection of the Art Institute of Chicago. The index is a summary of the lots to be offered in the online-only sale which starts Monday 8 December 2014 at 12pm EST and ends Monday 22 December 2014 at 12pm EST. Please see the online catalogue for this sale for detailed lot descriptions, our Conditions of Online-Only Sale and other important information regarding the auction.

Please note that all lots are offered for sale subject to our Conditions of Online-Only Sale and Authorship Warranty, and any other notices or announcements on our website, phillips.com.

BUYER'S PREMIUM

Phillips charges the successful bidder a commission, or buyer's premium, on the hammer price of each lot sold. The buyer's premium is payable by the buyer as part of the total purchase price at the following rates: 25% of the hammer price up to and including \$100,000, 20% of the portion of the hammer price above \$100,000 up to and including \$2,000,000 and 12% of the portion of the hammer price above \$2,000,000.

If you are interested in knowing more about the Photographs from the Collection of the Art Institute of Chicago online-only auction, please contact us at +1 212 940 1245 or photographs@phillips.com